

SMARTWASHER™ 96

Microplate Washer (for 96 well microplates)



Fast, accurate, and reliable plate washing for ELISA assays



Microplate Washer

(Bottles included)

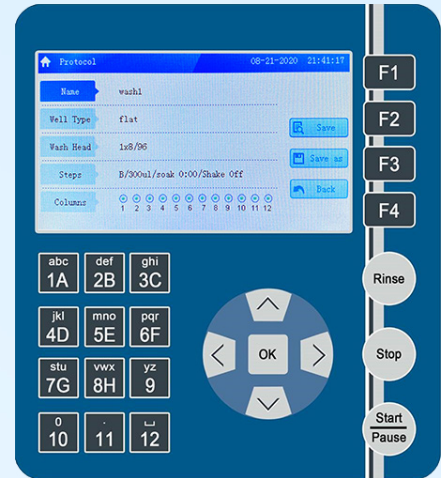
- Quick set up and easy programming
- Compatible with U, V, C, and flat bottom 96 well plates
- Flexible programming for full plate, partial plate, or strip washing
- Choose 8-channel or 12-channel wash head
- Individually controlled wash and rinse sources

SMARTWASHER™ 96

Microplate Washer (for 96 well microplates)

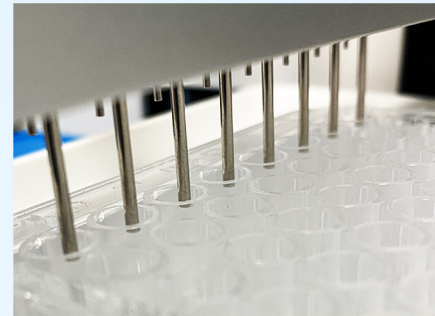


- Precision control of aspiration needle position
 - Accurate to 0.1mm
 - Minimal residual liquid, $\leq 1\mu\text{l/well}$
- Auto rinse function eliminates cross contamination
- Up to 100 wash protocols can be customized and stored
- Liquid level sensors in wash and waste bottles
- Wash protocols can be transferred via flash drive



Research requires flexibility – the *SmartWasher™ 96* provides it. Full plates, partial plates, and strips with U, V, C, or flat bottoms are accepted by this fully automated washer. Multiple aspiration point settings allow for minimal residual liquid in the wells after aspiration. All parameters, including dispense volume, suction time, soak and shake cycles, and shaking speed are easily programmed using the large 4.3" LCD display and keypad. Up to 100 wash protocols can be stored on board the *SmartWasher™ 96* and recalled when needed, or transferred between machines with a flash drive.

The washer comes equipped with 2 wash bottles, 1 rinse bottle and a waste bottle. All have sensors that alert the user when the solutions are low, or in the case of the waste bottle, when it needs to be emptied. An auto-rinse function primes the dispensing tube and wash heads to prevent cross contamination and clogs.

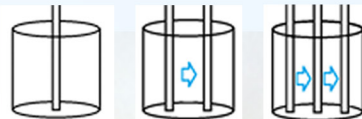


8- and 12-channel wash heads are available separately to accommodate plates in either orientation. A transparent, acrylic shield surrounds the wash area, allowing for visualization of the plate. Should a spill or leak occur, the beveled spill well ensures that the liquid is extracted immediately to avoid cross-contamination.

The *SmartWasher™ 96* is the perfect partner for the *SmartReader™ 96 Microplate Absorbance Reader* as well as other popular readers.



Compatible with all common microplate well shapes



Multiple aspiration point settings (one, two or three positions) to optimize liquid aspiration from different plate types

Also available:
SmartReader™ 96



Specifications

Wash heads	1 x 8 or 1 x 12	Soaking & shaking time	1 second to 99 minutes
Plate types	Flat, U, V, or C bottom	Shaking speed	Slow, medium, fast
Washing volume	50-2000 μl , in 50 μl increments	Bottle capacity	4 x 2.5L, 2 wash, 1 rinse, 1 waste
Dispensing accuracy	$\leq 2\%$ @300 μl	Data connection	USB for flash drive
Dispensing precision	CV $\leq 1.5\%$ @ 300 μl	Dimensions (W x D x H)	13.6 x 18.11 x 7.87 in
Aspiration modes	Single, two, and three points	Weight	12kg / 26.4 lbs
Residual liquid	$\leq 1\mu\text{l}$	Electrical	110-240VAC, 50/60Hz

Ordering Information

MW9600	SmartWasher 96 for 96 Well Plates, 115V (Wash heads sold separately)
MW9600-E*	SmartWasher 96 for 96 Well Plates, 230V (Wash heads sold separately)
MW9600-8CM	8 channel wash head
MW9600-12CM	12 channel wash head

*for 230V, please specify plug type when ordering



A Division of Benchmark Scientific Inc.
PH: 908-769-5555 www.accuris-usa.com
EM: info@accuris-usa.com