

A Cost Effective Instrument For Elisa, Protein Assays and More



Microplate Absorbance Reader

- **Intuitive, 7 inch color touch screen control panel**
- **Filter based system with wavelength range from 340 to 750nm**
- **Operates as a stand alone system, or connects to a PC or printer**
- **Absorbance range: 0.0 to 4.0000 Abs**
- **8 channel vertical optical path, with zero dispersion**
- **Integrated, multispeed plate shaker**

Accuris Instrument's new MR9600 is a welcome addition to any lab that is routinely measuring concentration or absorbance in 96 well plates. The instrument's 7 inch color touch screen, intuitive software and graphical interface makes it easy to use as a stand alone instrument (computer connection and additional software is not required).

The MR9600 comes complete with 4 popular filters: 405,450,492,630nm and twenty six additional filters are available separately to cover a full range from 340 to 750nm. The integrated filter wheel allows up to 8 filters to be loaded at once, and filters can be selected during programming. Up to two filters can be used for 2 measurements of the sample plate, for calculated comparisons. Kinetic calculations can be performed by setting multiple readings.

Use the touch screen, or connect a mouse for programming and operation. The menu interface allows the user to choose the wavelength filter, set shaking parameters, enter details of the plate layout, and also choose the details for the reading protocol and data calculations.

The MR9600 is a convenient stand alone reader, all software and the programming system is incorporated into the electronics. However, a convenient USB port on the side allows quick and easy saving of data files to a USB drive, and the universal .csv files can then be shared or transferred to a computer for storage or further processing. A data port can be used for connecting a computer or basic printer.

The plate layout interface allows for quick and intuitive set up of a plate's well contents. The display shows a graphical representation of the 96 well plate, and the user can label each well as required for: "known standard", "unknown sample", "blank well", "QC control well", "negative control", "positive control", or "empty". The interface allows highlighting and labeling multiple wells to save time.



Printer Compatible



Windows Compatible



Touch Screen



Color Display



USB File Storage

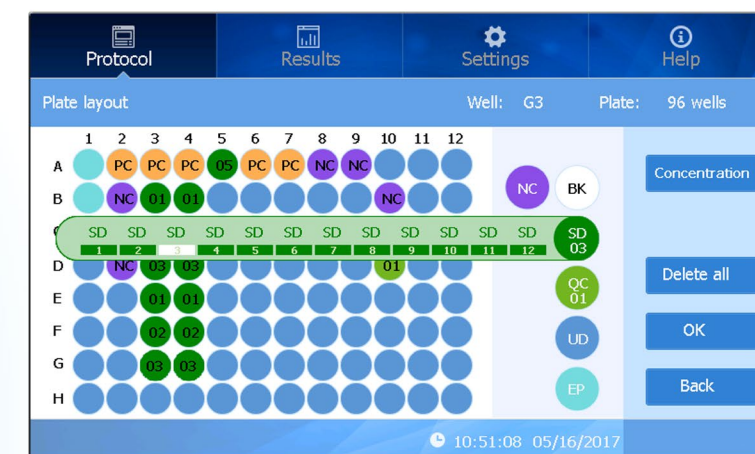
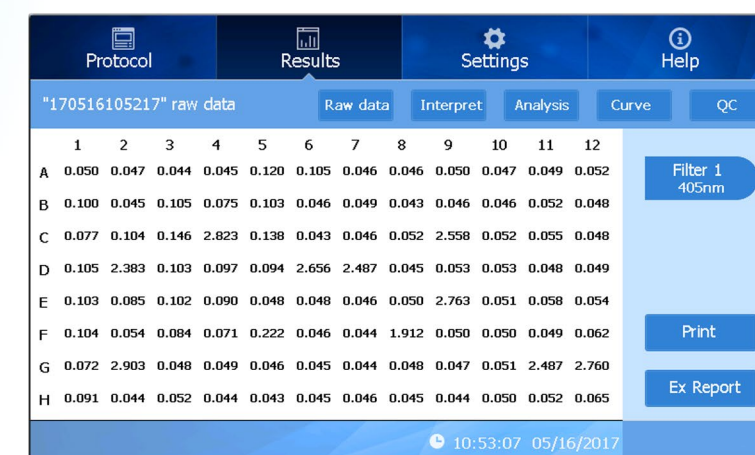


Plate Layout Screen



Reading Results Screen

Measurement data is available immediately on the screen after a reading, as well as interpretations, calculated analysis and curve fittings.

Ordering Information

MR9600	Accuris Microplate Absorbance Reader, for 96 Well Plates, 115V
MR9600-E*	Accuris Microplate Absorbance Reader, for 96 Well Plates, 230V
MR9600-TP	Thermal Printer for MR-9600

*For 230V please specify plug type when ordering

Technical Specifications

Model	Accuris MR-9600
Control and Display	7 inch touch screen (800 x 480 pixels)
Light source	Quartz-halogen lamp 6V/10W
Wavelength range	340-750nm (405, 450, 492 and 630nm filters included)
Half-Bandwidth of filters	3~9nm
Read-out range	0~4.000 Abs
Linearity (405nm)	0~2.000 Abs <+1% 2~4.000 Abs <+2%
Resolution	0.001Abs
Accuracy (405nm)	+1% (0-3.Abs) +2% (3-4Abs)
Precision (405nm)	CV≤0.2% (0-3) Abs CV≤1.0% (3-4) Abs
Test speed	<6 sec. for 96 well plate
Incubator	No
Shaking	3 modes: slow, medium and fast
User interface	Integrated software, touch screen control
Storage	200 programs and 100,000 test records
Ports	USB ports, for PC, printer, mouse and flash drive
Dimensions (W x D x H)	295 x 440 225 mm / 11.6 x 17 x 8.75 in
Weight	10 kg



A Division of Benchmark Scientific Inc.
PH: 908-769-5555 www.accuris-usa.com
EM: info@accuris-usa.com