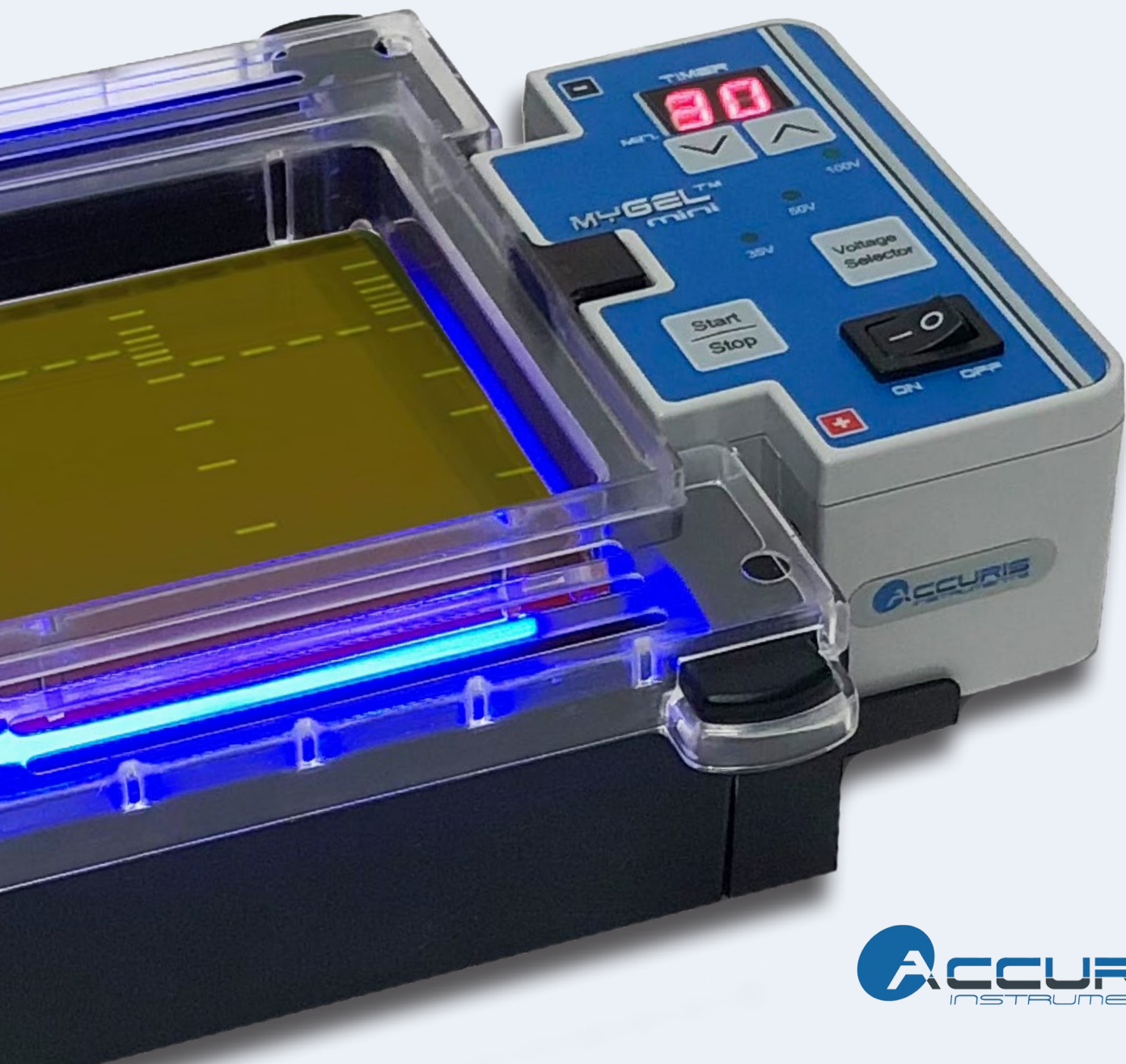


# InstaView™ Electrophoresis Systems

**RUN GELS - VIEW PROGRESS - DOCUMENT RESULTS**  
**ALL IN ONE PLACE, ALL IN REAL TIME**

- *View DNA migration and separation as it happens*
- *Blue light illumination - won't damage DNA*
- *Capture high resolution images without removing the gel from the tank*



# MY GEL™ InstaView™ System

## Complete system with power supply

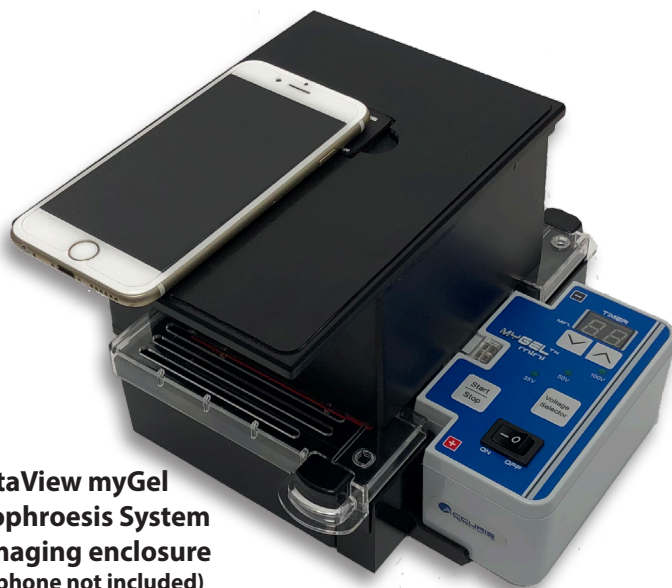
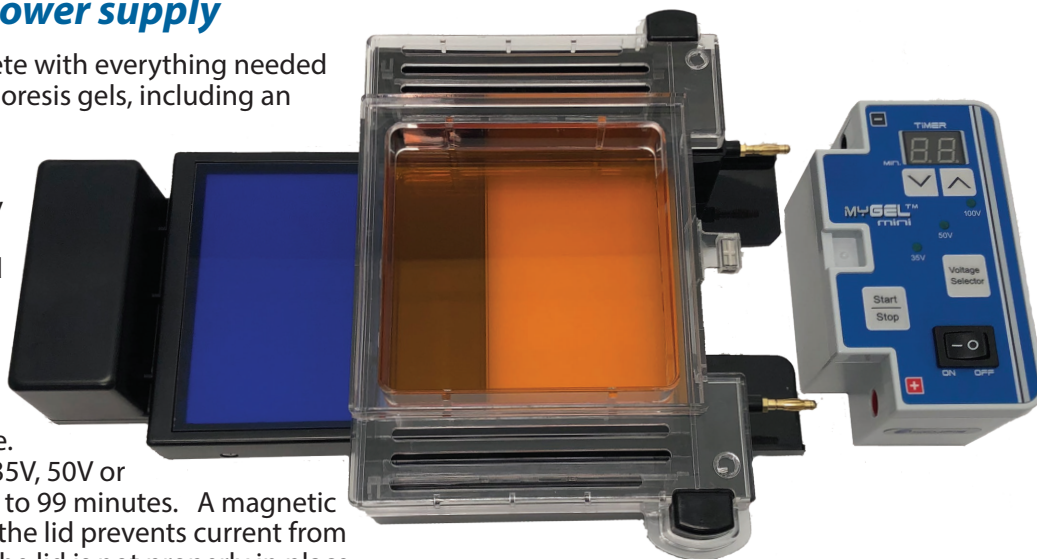
The myGel InstaView comes complete with everything needed to cast, run and view mini electrophoresis gels, including an integrated power supply.

One large (10.5x10cm) or small (10.5x6cm) gel is accommodated by the gel tank. Gels are easily poured using the supplied trays, combs and leak-proof casting stand.

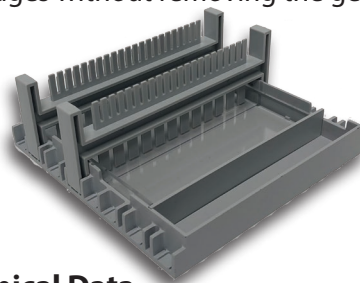
The power supply connects directly into the gel tank - no more leads to contend with. The connection is guaranteed to be right, every time. Output voltage can be adjusted to 35V, 50V or 100V and run time can be set for up to 99 minutes. A magnetic interlock between the gel tank and the lid prevents current from running through the system when the lid is not properly in place.

Once the myGel InstaView System is set up, simply slide the mini LED transilluminator into place under the tank and at any time turn it on to view the run in real time. An array of blue LEDs emits bright blue light at a wavelength of 465nm for optimal excitation of common green fluorescent stains such as SmartGlow™, SYBYR™ Green and Gel Green, without damaging DNA. An orange filter is incorporated into the lid for visualizing DNA bands without any additional equipment or special glasses.

When it's time to document results, place the included gel imaging enclosure over top of the myGel InstaView, and use the camera app on any smart phone to capture high resolution images without removing the gel from the tank. Images are easily shared via email or text message or printed.



**InstaView myGel  
Electrophoresis System  
with imaging enclosure  
(smart phone not included)**



**Casting Set  
with large  
gel tray**

### Technical Data

Output voltage	35V, 50V or 100V
Timer	0-99 mins, continuous
Safety	Magnetic switch
Buffer Volume	230ml
Gel Capacity	1-10.5x10cm or 1-10.5x6cm gel, 0.5cm thick
Transilluminator	Blue LED, 465nm
WxDxH (w/enclosure)	10x8.25x5in/25.5x21x14cm
Weight	2.3lb/1.04kg
Electrical	115V, 60Hz or 230V, 50Hz
Warranty	2 years

### Ordering Information

Catalog No. E1201*	Description myGel InstaView Electrophoresis System, includes gel tank with orange filter, direct connect power supply, E1200-CS1 casting set (see below), Mini SmartBlue Transilluminator and imaging enclosure
E1200-CS1	Additional casting set, includes casting stand, divider, 2 trays for 10.5x6cm gels, one tray for 10.5x10cm gels, 2 double-sided combs -12/22 teeth
E1101-COMB1	Additional double-sided combs, 12/22 teeth, pack of 2
E4000-VG1	SmartBlue Viewing Glasses for use with blue transilluminators
E1220-OC	Orange cover for mini LED transilluminator (for use separately from the gel tank)

\*115V with US plug. For 230V, add -E to end of catalog number.



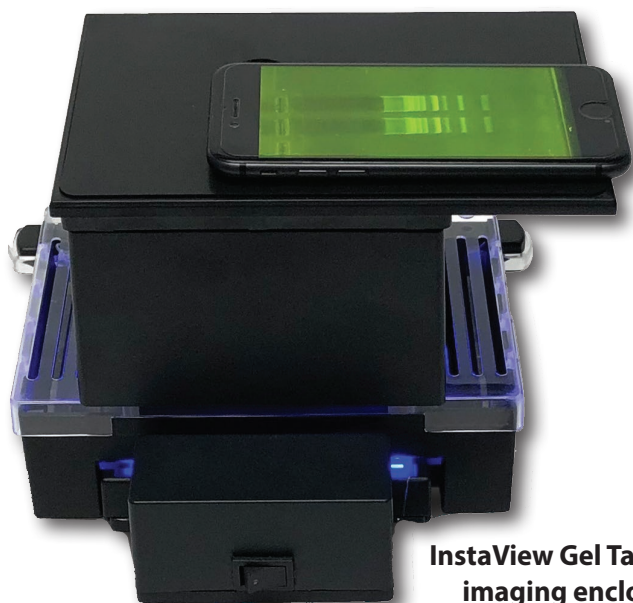
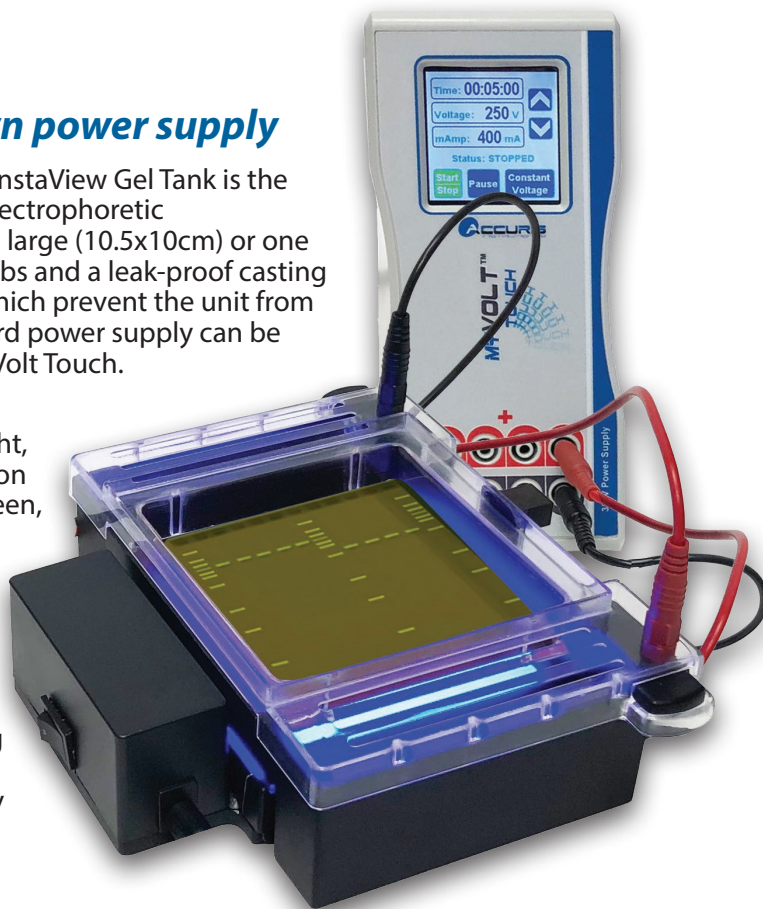
# InstaView™ Gel Tank

## InstaView Gel Tank - Connect your own power supply

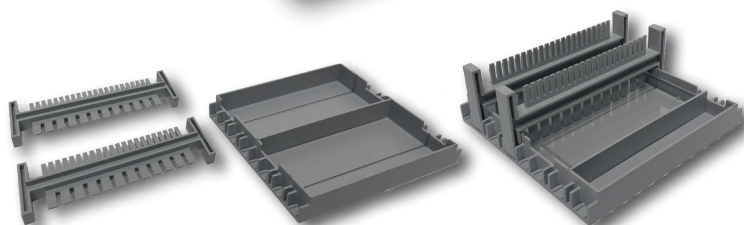
For labs that prefer to use a separate power supply, the InstaView Gel Tank is the perfect choice for running, viewing and documenting electrophoretic separations. The InstaView Gel Tank accommodates one large (10.5x10cm) or one small (10.5x6cm) gel tray and is supplied with trays, combs and a leak-proof casting stand. The gel tank lid includes attached power leads which prevent the unit from operating without the lid properly in place. Any standard power supply can be connected, including the Accuris myVolt™ Mini and myVolt Touch.

The InstaView Gel Tank is shaped to allow the mini LED transilluminator (included) to slide underneath. Blue light, at a wavelength of 465nm, provides excitation of common green fluorescent stains such as SmartGlow™, SYBR™ Green, and GelGreen. An orange filter is incorporated into the gel tank lid for visualizing the DNA in the gel box without any additional equipment or glasses. The transilluminator can be turned on at any time during a run to track progress, and automatically shuts off after 5 minutes.

After electrophoresis, simply place the included imaging enclosure over the InstaView Gel Tank to capture high resolution images with a smart phone. Images are easily printed or shared via email or text message.



**InstaView Gel Tank with imaging enclosure**  
(smart phone not included)



**Included Casting Set**

### Technical Data

Safety	Physical interlock between lid and tank
Buffer Volume	230ml
Gel Capacity	1-10.5x10cm or 1-10.5x6cm gels, 0.5cm thick
Transilluminator	Blue LED, 465nm
WxDxH (w/enclosure)	7.5x8.25x5in / 19x21x14cm
Weight	1.65lb/0.75kg
Electrical	115V, 60Hz or 230V, 50Hz
Warranty	2 years

### Ordering Information

Catalog No.	Description
E1200*	InstaView Gel Tank, includes tank with orange filter, C1200-CS1 casting set (see below), Mini SmartBlue Transilluminator and imaging enclosure (power supply not included)
E2301*	myVolt™ Touch Power Supply, 1 to 300V, 400mA, 100W
E2100*	myVolt™ Mini Power Supply, 100V/200V
E1200-CS1	Additional casting set, includes casting stand, divider, 2 trays for 10.5x6cm gels, one tray for 10.5x10cm gels, 2 double-sided combs -12/22 teeth
E1101-COMB1	Additional double-sided combs, 12/22 teeth, pack of 2
E4000-VG1	SmartBlue Viewing Glasses for use with blue transilluminators
E1220-OC	Orange cover for mini LED transilluminator (for use separately from the gel tank)

\*115V with US plug. For 230V, add -E to end of catalog number.

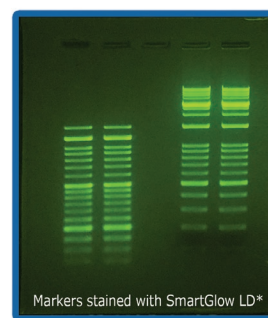
## Electrophoresis Supplies

### SmartGlow™ Safe Nucleic Acid Stain

SmartGlow is a safe alternative to ethidium bromide for visualization of DNA in agarose gels.

- >Excitation by UV or blue light
- >Non-mutagenic, environmentally safe
- >No special disposal methods required
- >20,000X Prestain or 6X Loading Dye

E4500-LD SmartGlow Loading Dye w/Safe Green Stain, 1ml  
E4500-PS SmartGlow Safe Green Prestain, 1ml



Markers stained with SmartGlow LD\*

\*Excitation with Accuris SmartBlue™ Transilluminator. Imaged using Accuris SmartDoc™ and an iPhone® 8.

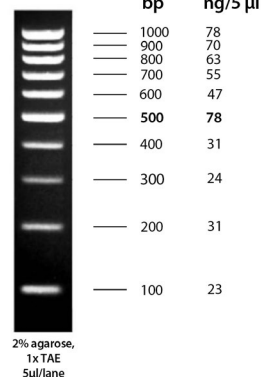
### SmartCheck™ DNA Ladders

SmartCheck DNA Ladders are designed for fast and accurate DNA sizing in agarose gels.

- >Three sizes - 50bp, 100bp and 1kb
- >Ready to use formulation with loading buffer and tracking dyes
- >Higher intensity reference bands
- >Each tube is suitable for 500 lanes (5µl/lane)
- >Ultra-pure production allows for economical ambient shipping

PR4005-500 SmartCheck DNA Ladder, 50bp, 500 lanes  
PR4010-500 SmartCheck DNA Ladder, 100bp, 500 lanes  
PR4100-500 SmartCheck DNA Ladder, 1kb- 500 lanes

#### 100 bp ladder



### QuickSilver™ Powdered Buffer Packs

QuickSilver Powdered Buffer Packs offer the convenience to quickly make fresh 1X buffer on demand.

- >Premeasured pouches with quick dissolving powder
- >Each pouch makes 1L of 1X buffer - just add water
- >No pH adjustment needed
- >Economical shipping, long shelf life
- >Guaranteed quality and consistency

EB1000 TAE Buffer Packs, 100 pouches (1L of 1X/pouch)  
EB1001 TBE Buffer Packs, 50 pouches (1L of 1X/pouch)  
EB1002 Fast Running Buffer Packs, 100 pouches (1L of 1X/pouch)  
Other buffers also available. Ask for details.



### Benchmark Agarose LE

Benchmark Agarose LE is a general purpose agarose. Highly purified, it is refined using an advanced process that excludes the use of organic solvents.

- >Enhanced resolution and clarity
- >Low EEO/increased electrophoretic mobility
- >RNase, DNase and Protease free
- >Green choice - free from organic solvents

A1700 Benchmark Agarose LE, 25g  
A1701 Benchmark Agarose LE, 100g  
A1705 Benchmark Agarose LE, 500g  
Also available in convenient 0.5g tablets. Low Melt, High Resolution and Blended 3:1 agaroses are also available. Check our website for details.

