



Data Sheet



Adash 1100 Measurement Pads and Magnetic Bases

Applications:

- ✎ Points for route measurements
- ✎ Fixed attachment of sensor to machine
- ✎ Excellent signal transfer to sensor
- ✎ High frequency measurements (bearing condition)

Characteristics:

- ✎ Pads are manufactured from high quality stainless steel
- ✎ Suitable for on-line systems and also for use of magnetic bases
- ✎ Contact with machine surface by special glue
- ✎ Plastic cover protects pads
- ✎ The thread M6 (option 1/4-28)



Description:

Measurement pads enable the fixing of vibration sensor to machine surface. It is the only way, how ensure the repeatability of measurements. It is important for trend data and also for high frequency measurements. Only in that case you are able to measure bearings condition. Pads are manufactured from high quality magnetic stainless steel. The special glue is used for fixing and plastic cover protects the grinded surface of pad. Special pads for electric motors exist, which are fixed between cooling ribs.



A1100-Standard pad with cover

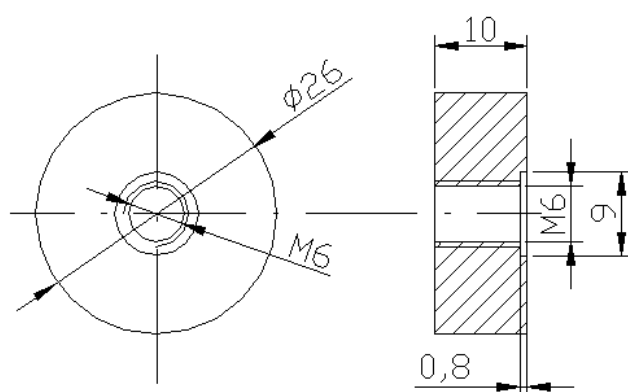


A1102-Magnetic base

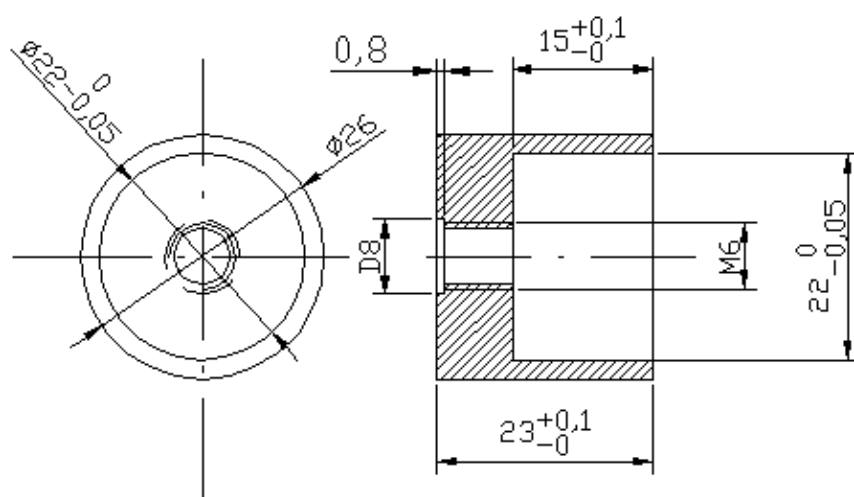


A1109-Glue

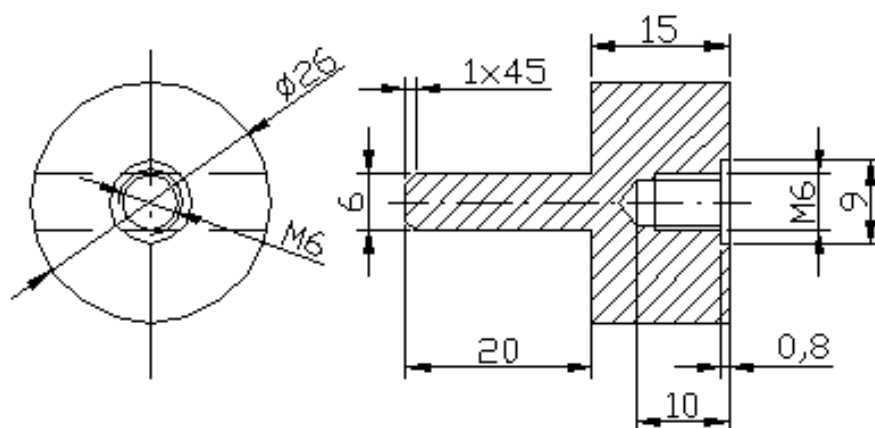
Schemes:



A1100-Standard pad



A1102-Magnetic base



A1101 - pad for electric motors