

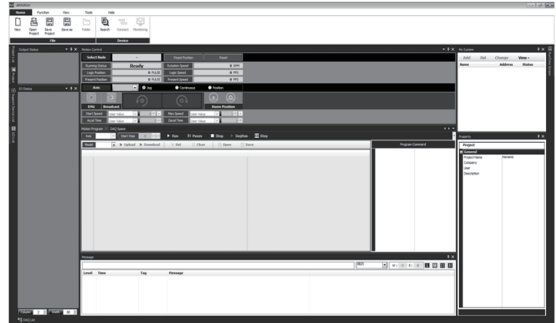
atMotion (Comprehensive Motion Device Management Program)

■ atMotion Overview

NEW

atMotion is a comprehensive motion device management program that can be used with Autonics motion controller (AiC-D, PMC-2HSP/2HSN, PMC-1HS/2HS, PMC-4B-PC1). atMotion provides GUI control for easy and convenient parameter setting and monitoring data management of multiple devices.

※Visit our website (www.autonics.com) to download the user manual and software.



< atMotion screen >

■ Features

- **Multiple Device Support**
 - Simultaneously monitor multiple devices and set parameters.
 - Simultaneously connect units of a single device with different addresses.
 - When using ModBus RTU for communication, multiple RS-232 ports are accessible.
- **Device Scan**
 - : When multiple units are connected with different addresses, the unit scan function automatically searches for units.
- **Convenient User Interface**
 - : User can freely arrange windows such as data monitoring, properties, and projects.
 - Saving a project saves the screen layout also.
- **Project Management**
 - : Saving data as a project file includes added device information, data monitoring screen layouts, and I/O source selection.
 - When you open the project file, the last state of the saving moment will be loaded.
 - Organizing project list makes managing project files easier.
- **Print Modbus Map Table Report**
 - : Print address map reports of registered Modbus devices.
 - Modbus map table reports can be saved in html (*.html) and pdf (*.pdf) formats.
- **Multilingual Support**
 - : Default supporting language is Korean and English.
 - User can add a different language, by modifying, renaming and saving the files in the 'Lang' folder.
- **Script Support**
 - : Using Lua Script language allows applying different I/O processes for each devices.

■ Installing The Program

Ⓞ System requirements

< Computer specification for using software >

Item	Minimum requirements
System	IBM PC compatible computer with Intel Pentium III or above
Operations	Microsoft Windows 98/NT/XP/Vista/7/8/10
Memory	256MB+
Hard disk	1GB+ of available hard disk space
VGA	Resolution: 1024×768 or higher
Others	RS-232 serial port (9-pin), USB port

Ⓞ Preparations

Download atMotion program at Autonics web page (www.autonics.com).

Close all programs before you start atMotion installation.

Double-click atMotion setup.exe to start installation.

When Installer Language window appears, select the language and click OK button.

Supporting language is Korean and English.



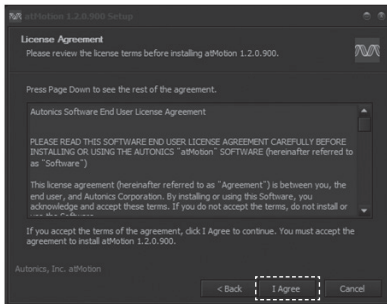
Ⓞ Installation

1) Click Next button in the installation welcome window.

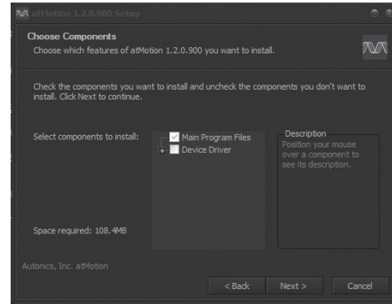


2) This process is license agreement.

You can check whole part of license agreement article by rolling mouse scroll downward, clicking downward arrow or press "Page Down (PgDn)" Key of the keyboard. Please read the articles thoroughly before click I Agree button.



3) Select components to install.

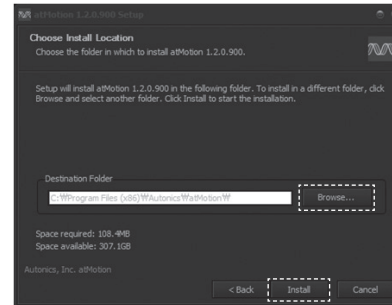


4) Choose Install Location window appears Default installation path is as follows

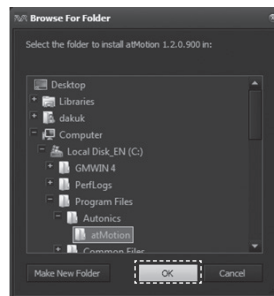
- 32bit Operating system : C:\Program Files\AUTONICS\ atMotion

- 64bit Operating system : C:\Program Files (x86)\AUTONICS\ atMotion

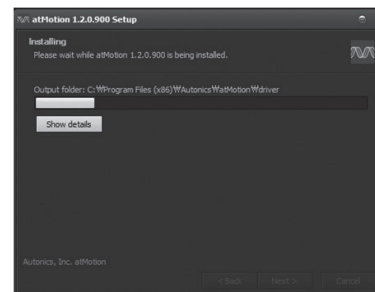
Click [Install] button to install the program in the default installation path.



5) If you want to install the program in another installation path, click [Browse..] button to designate a folder you want to install in and click [OK] button.



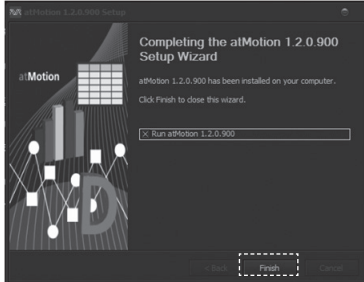
6) Installation progress is displayed in the status window as follows.



(A)	Photoelectric Sensors
(B)	Fiber Optic Sensors
(C)	Door/Area Sensors
(D)	Proximity Sensors
(E)	Pressure Sensors
(F)	Rotary Encoders
(G)	Connectors/ Connector Cables/ Sensor Distribution Boxes/Sockets
(H)	Temperature Controllers
(I)	SSRs / Power Controllers
(J)	Counters
(K)	Timers
(L)	Panel Meters
(M)	Tacho / Speed / Pulse Meters
(N)	Display Units
(O)	Sensor Controllers
(P)	Switching Mode Power Supplies
(Q)	Stepper Motors & Drivers & Controllers
(R)	Graphic/ Logic Panels
(S)	Field Network Devices
(T)	Software

■ Installing The Program

- 7) Installation Complete window appears after installation is completed.
If the check box in the Installation Complete window is checked, atMotion runs upon completion of installation.
You can run atMotion by double-clicking the atMotion icon on the desktop.



The initial screen displays as follows.

