



Since 1984

IMAGINE

A BETTER READING EXPERIENCE



Touchboards

205 Westwood Ave, Long Branch, NJ 07740
Phone: 866-94 BOARDS (26273) / (732)-222-1511
Fax: (732)-222-7088 | E-mail: sales@touchboards.com

HELLO!



Since 1984, Anthro has been in the business of making furniture for technology. Our goal is to stay well ahead of technology by making it more comfortable and more accessible with the best workstations possible.

QUICK HISTORY

Anthro started in 1984, when personal computers were beginning to influence the workplace. Mobile carts were just the ticket for folks looking for a place to put these amazing new machines. We're proud that we still sell that first AnthroCart — and that thousands continue to be used all over the world.



ONLY FURNITURE FOR TECHNOLOGY

We only focus on furniture for technology — so that it's comfortable for you to use.

ANTHROPOMETRICS!?!

That's the big word from which we get our name — it's the field of study surrounding the size, movement and proportions of the human body. Our strength is in our ergonomic furniture designs and in our knowledge of how the human body works most comfortably and efficiently.

WE LOVE HEARING FROM SATISFIED CUSTOMERS

"We have at least 10 radiologists that use Steve's Station and they couldn't be happier! The features that are most used are ambient light, table height adjustment, USB port, monitor adjustment, fan and task lights..."

Dr. Deborah Arnold
Radiologist, Providence Medical Center
Portland, OR

ENVIRONMENTALLY RESPONSIBLE

Reduce, reuse and recycle are three words that each Anthro employee takes to heart. We are proud to be honored as one of the Best Green Companies to work for in Oregon again this year.



KNOWLEDGEABLE AND FRIENDLY FOLKS

You've probably heard that phrase before, but we look forward to not only proving it to you but also to delighting you! No matter who you speak with at Anthro, we'll do our darnedest to violate your expectations in a positive way.



BUILD THEM ANY WAY YOU WANT THEM

With all of the accessories and options that we offer, you decide how you want to configure your workspace. But we'll be happy to do the configuring for you, if that's easier.



...AND PHOTOGENIC!



All of the models you see in our literature have worked at Anthro, and we can't think of better people to demonstrate our products.

TABLE OF CONTENTS



Carl's Table
pgs 6-9



Steve's Station
pgs 10-13



Elevate Original
pgs 14-17



Seating
pgs 20-21



Small Carts
pgs 22-25



Wall Mounts
pgs 26-27

MADE IN THE USA

We design and manufacture in Portland, Oregon to control quality and respond quickly to your needs.

CHANGES WITH YOU OVER TIME

Do your space and hardware change every couple of years? Your Anthro furniture can keep up with you by adding or removing accessories. Anthro is a one-time investment that you'll enjoy for a lifetime.

LIFETIME WARRANTY

Anthro products are built to last. The very first AnthroCarts rolled out in 1984. They are still going strong and we still stand behind them!



We're the ergonomic experts in healthcare imaging.

Every Anthro furniture solution is designed to be very adjustable so every user, no matter their height, can configure their worksurface, keyboard and monitor in the most comfortable position. Whether you need to sit and stand throughout your day or have multiple users sharing a workstation, Anthro keeps you comfortable and productive all day long.



Here are a few ergonomic guidelines as shown on Anthro's Carl's Table CT12:

- 1. The top of the monitor should be just below eye level.
- 2. The head and neck should be balanced and in line with the torso.
- 3. Shoulders should be relaxed.
- 4. Wrists and hands should be in line with the torso.
- 5. Elbows should be close to the body.
- 6. The lower back should be supported.
- 7. Feet should rest flat on the floor or be supported by a footrest.

Source: OSHA Ergonomic Solutions (www.osha.gov)

IMAGING TABLES

All of Anthro's sit/stand PACS workstations are designed for comfort and productivity, but what makes each family unique?



CARL'S TABLE®



1 Monitor Control System™

Found only on Carl's Table CT12, the Monitor Control System moves the entire monitor array (up to 4 displays in a row) up/down/forward/back in unison. These electric controls adjust all of your monitors to your desired height and focal depth with the simple push of a button. And our patent-pending monitor mounts are designed specifically for radiologists, with gap-free, precisely controlled monitor alignment.



2 Reclining Tilt

The work surface on CT12 can tilt as much as 15° with the push of a button so you can work in a reclined position. It also has a separate non-tilting Coffee Surface for items that you want to keep level, like your coffee.



3 Smart Adaptive Lighting

The ambient backlight on CT12 can be controlled manually or through a sensor that reads the light density of the images on your monitors and automatically adjusts the backlight's brightness to help reduce your eye strain and keep you working in comfort.



4 Custom Comfort Fitting

Anthro handles each CT12 order with kid gloves, from the time it leaves our dock until it's up and running in your reading room. An Anthro Field Service Engineer meets the shipment at your dock, delivers it to the reading room, assembles the table, and works with IT staff to install your equipment. Best of all, we provide personal fittings for each doctor to show them all the features of the table and how they work!



Turn to page 6 for more on the Carl's Table.

STEVE'S STATION®



1 Can Hold Up To Six Displays in a Single Line

Does your practice use a 4+2 configuration? Steve's Station Advanced and Steve's Station Essential (with Anthro's patent-pending Monitor Easy Track) have the work space and lift capacity to adjust a bank of 6 displays while keeping them all aligned precisely.



2 Monitor Easy Track™

Found only on Steve's Station, the Monitor Easy Track slides the entire monitor array (up to 6 displays) forward and back in unison to reach your optimal focal depth. And like Carl's Table, our mounts are specifically designed for radiologists' needs, to give you gap-free, precisely controlled alignment of all your monitors.



3 Lifts The Most Weight

All of Anthro's sit/stand imaging desks have powerful electrically adjustable legs, but Steve's Station Advanced holds the lift record at 325 lbs! (Steve's Station Essential is no lightweight, though – it can lift up to 200 lbs.)

4 Largest Range Of Adjustment

Combined with the range of motion in their electric sit/stand legs, Dual Surface Steve's Station Advanced and all Steve's Station Essentials have a spring-assisted keyboard surface that adjusts as high as 56" and as low as 17.25".

Turn to page 10 for more on Steve's Station.

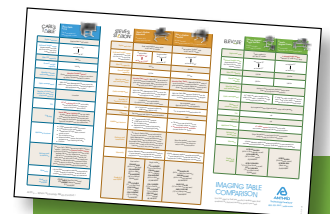
ELEVATE™



Variety Of Choices

Looking for a table to maximize your corner space? Or a single surface table as wide as 72"? Elevate has the sizes, shapes, and price points to match the way you work.

Turn to page 14 for more on Elevate Original.



See pages 18-19 for a full Comparison Chart and Technical Data on all of Anthro's imaging tables!

CARL'S TABLE CT12

The most advanced radiology desk to date.

The Carl's Table CT12 imaging furniture is a complete reading environment that sets the standard for adjustable, ergonomic imaging workstations. Its innovative design and usability earned Carl's Table the Best of NeoCon Gold Award, as judged by an international panel of leaders in product design.



Sit/Stand/Recline with the Simple Push of a Button



Easily adjust the table height, table tilt and monitor position to accommodate multiple users – whether **sitting**, **standing**, or **reclining**. Each user can then lock-in their preferred height and tilt positions into the Programmable Preset menu – adjust the table to fit you in just a matter of seconds so you can get right to work!





Who is Carl?

Our Swedish friend Carl Ohlson, a furniture designer and talented Dixieland banjo picker, built the original Carl's Table with the goal for it to be the most comfortable imaging desk available.



"There has been a definite reduction in fatigue as well as back problems since our radiologists started using the Carl's Table and Verté chairs. Customer support is great at Anthro also."

Teresa C.
Women's Diagnostic Center
Louisville, KY

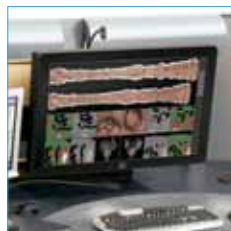


Carl's Table CT12 in the reading room.

Visit anthro.com for a feature-by-feature walkthrough of CT12 with Mike Graham, Anthro's Elite Sales Manager for Imaging.



Learn more about Carl's Table features on pages 8-9.



Monitor Control System™



Adaptive Lighting System



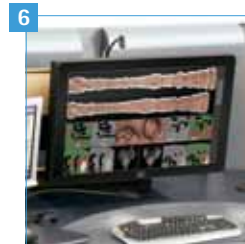
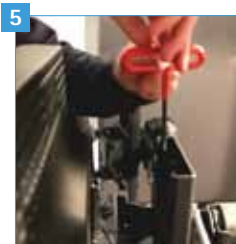
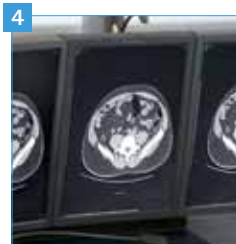
White Glove Delivery and Custom Comfort Fitting

CARL'S TABLE CT12

The most advanced radiology desk to date.

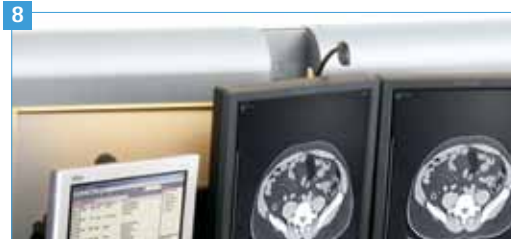
Monitor Control System™

- 1 Push-button controls electrically adjust the entire bank of monitors.
- 2 Place monitors in your correct ergonomic line of vision by adjusting them up and down.
- 3 Reduce eye strain – adjust monitors closer or farther away for the focal depth you need.
- 4 Our patented mounts make it easy to install all of your monitors in perfect alignment.
- 5 We provide tools for precision adjustments.
- 6 Supports 6MP and 10MP diagnostic monitors.
- 7 Plug monitors into the rear power bar and manage cables cleanly.



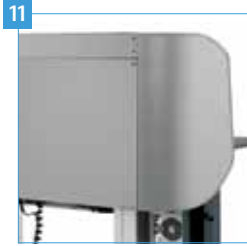
Adaptive Lighting System

- 8 Ambient back lights reduce eye strain with adjustable light levels that can be controlled manually or automatically. When set to Auto control, a sensor adjusts the back light level based on the monitors' light density.
- 9 Two desk task lights are completely adjustable.
- 10 A single interface gives you full lighting control.





Other Innovative Features For Your Comfort



11 Wraparound acoustic panels absorb sound up to 35%.

12 Air Circulation System to keep you cool.

13 100 Programmable Height/Tilt Presets.

14 3 USB ports.

15 Non-tilting Coffee Surface.

16 Holder for your CPU.

17 Swiveling footrest.

18 Advanced Safety System protects equipment when raising or lowering the table.



White Glove Delivery & Custom Comfort Fitting



One of our friendly Field Service Engineers will personally handle your Carl's Table installation and confirm that the table is performing optimally. He'll help you make the most of your Carl's Table investment by personally fitting each of your doctors to the table and programming their preferred ergonomic presets.

Anthro handles every Carl's Table order with kid gloves, from the time it leaves our dock until it's up and running in your reading room. Each CT12 is carefully crated and delivered via Air Ride Equipped trailers to protect the table's delicate components and finishes.

An Anthro Field Service Engineer meets the shipment at the site dock, delivers it to the reading room, assembles the table, and works with your IT staff to install all the equipment.

Best of all, we provide personal fittings for each doctor to show them all the features of the table and how they work. We'll even help them program their preferred sitting, standing, and reclining positions!

See pages 18-19 for Carl's Table Technical Data and more details!

STEVE'S STATION®

A reading room workstation that adjusts to you.

The Steve's Station family of imaging furniture incorporates everything we've learned about imaging furniture over the last 12 years. Developed in partnership with radiologists across the US, this family best reflects our complete commitment to make every radiologist more productive at a very competitive price.



ADVANCED

A Roomy, Feature-Rich
Radiology Desk



Steve's Station is the
Winner of the 2011 Best of
NeoCon Innovation Award



Only Steve's Station Advanced offers you the choice of Single Surface or Dual Surface models. Both come complete with **Sit/Stand Adjustability**, **Monitor Easy Track** and **Cable Management System**.

"Steve's Station is one of the nicest tables available. It's a very large, elegant piece of furniture. We like the range of motion and the ease of moving the monitors closer and further back. The table size is good and allows for us to be uncluttered. Superb adjustability."

John Griffith
 CIO, Director of Operations
 EPIC Imaging, Portland OR



Steve's Station in the reading room.



NEW!

ESSENTIAL

All The Essential Features You Need,
 At A Very Competitive Price

Who is Steve?

Meet Steve Linder, Anthro's Senior Industrial Designer, who created the original design language for Steve's Station:

" You first notice the warm materials like the wood grain and metallic finishes. But what's also part of the design is the elegance of our integrated cable management which secures things like cables that the radiologist doesn't need to see or access."



Learn more about Steve's Station features on pages 12-13.



Monitor Easy Track™



Cable Management System

STEVE'S STATION

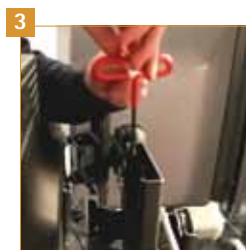
A reading room workstation that adjusts to you.

Monitor Easy Track™ on Steve's Station Advanced and Steve's Station Essential

1 Slide the entire bank of monitors in unison to the focal depth you need – then release the clamp to keep them securely in place.



2 Our patented mounts make it easy to install all of your monitors in perfect alignment.



3 Make precision adjustments with our provided tools.

4 Supports 6MP and 10MP diagnostic monitors.

5 Optional vertical extensions are available for stacking monitors.

Cable Management System on Steve's Station Advanced and Steve's Station Essential

6 Slide monitors into their mounts.



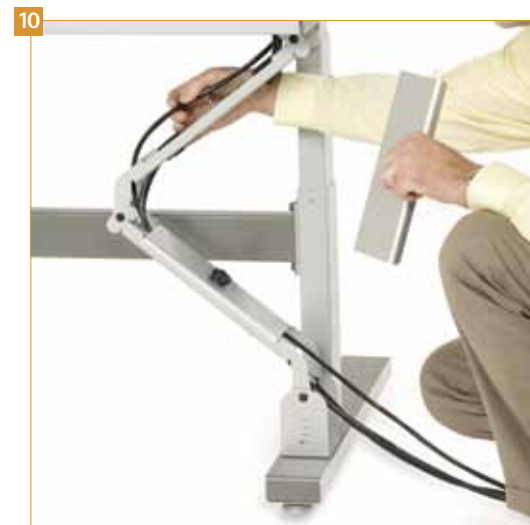
7 Route monitor cords down the cable channel behind the Monitor Easy Track.

8 Plug it all into power bricks inside the roomy cable trough.



9 Secure the door to the cable trough (Advanced tables only).

10 Never deal with cords yanking or annoying slack, no matter how high you adjust the table, by routing them through our fixed-length cable channels.



Examples shown on Steve's Station Advanced



ADVANCED



ESSENTIAL

Worksurface Adjustment



11 Sit or stand with ease using advanced push-button height controls, 3 height presets and LED read-out. *(Steve's Station Advanced only)*

12 Adjust the height of your worksurface with simple push-button height controls. *(Steve's Station Essential only)*

13 Raise or lower the front keyboard surface by squeezing the paddle. *(Dual Surface Steve's Station Advanced and Steve's Station Essential only)*

14 We design all Dual Surface tables with a non-tilting coffee surface.



Other Innovative Features *on Steve's Station Advanced only*



15 Two dimmable task lights.

16 Air Circulation System to keep you cool.

17 2 USB Ports.

18 The Safety System protects equipment when raising or lowering the table.



Coming Early 2015
Monitor Easy Track
 Anthro's Stand-alone
 Monitor Control System

See pages 18-19
for Steve's Station
Technical Data
and more details!

ELEVATE™ ORIGINAL

SINGLE SURFACE

Electric Lift Table In 60"
& 72" Widths



Anthro's original family of electric lift tables.

This popular Anthro family of sit/stand electric height tables comes in shapes and sizes to fit all of your displays into the space you have. Choose a Single Surface or a large Corner table.



Need space to accommodate 2 radiologists working side by side? Ask about our 72" wide Elevate Original Single Surface.

CORNER

A Corner Desk That Makes The Most Of Your Space



"We have to make sure that the workspace is customizable to each individual. Anthro tables aren't just adjustable for height, but also for tilt and lighting. Once we deployed these types of desks, most of the physical complaints pretty much dissipated."

Dennis Garcia
Imaging Informatics Operations Mgr.
UCLA Medical Center



Elevate in the reading room.



Learn more about Elevate features on pages 16-17.



Push-button height controls



Locking 4" rubber casters

ELEVATE ORIGINAL

Anthro's original family of electric lift tables.

About the Elevate Original Single Surface

With the Elevate Original you get a sleek, single surface radiology desk at a budget-friendly price.

Electric lift legs adjust 27"-53" high for your comfort. Ideal for when you want to work sitting or standing or for multiple users that share the same work space.

With a lift capacity of up to 150 lbs, the desk supports all of your displays.

Large 4" casters move it around easily when it's time to rearrange your reading room.



About the Elevate Original Corner

The large Elevate Original Corner imaging desk measures 72" wide on each wing, so you have plenty of space to spread out.

The table's three electric legs lift up to 250 lbs to support even 4+2 configurations.

Like the Elevate Original Single Surface tables, the Corner moves 27"-53" high with the simple push of a button.





SINGLE SURFACE



CORNER

Innovative Features *on all Elevate Original tables*



- 1 Adjust the shelf 27"–53" with the simple push of a button.
- 2 The roomy rear cable trough is deep enough to hold optional power bricks.
- 3 Waterfall edges are comfortable against forearms and wrists.
- 4 Large 4" rubber casters make it easy to move your table and lock it in place.
- 5 Adjust the position of each monitor with optional LCD arms.
- 6 Optional CPU racks can raise or lower as you adjust the table height.
- 7 Optional keyboard caddies help you optimize desk space.



See pages 18-19 for Elevate Original Technical Data and more details!

ELEVATE II™

Elevate II is Anthro's newest family of sit/stand desks that are perfect when you need to quickly capture and read images. They showcase a sleek and simple design complete with tilt-and-go wheels, strong legs that lift 150 lbs. and easy cable management. Prices start at only \$1,399.



ELEVATE II



ELEVATE II ADJUSTA

CARL'S TABLE®

Carl's Table CT12

The most advanced radiology desk to date.



Styles and sizes	Dual-surface in 65" width
Sit/stand height range (measurements are from the floor to the top of the keyboard surface)	as high as 49.5" ↓ as low as 30"
Max lift capacity	300 lbs.
Overall weight capacity	300 lbs.
Monitor controls and configurations	Monitor Control System™ Electrically adjust an array of up to 4 monitors up, down, forward and back in unison.
Cable management	With the Cable Management System, move the table to any position and the cords stay plugged in and equipment stays in place.
Number of electrical outlets for powering electronic devices	14 outlets.
Tilt	15° of reclining tilt on the entire table, with a Coffee Surface for items you want to keep level (like coffee!)
Lighting	Smart Adaptive Lighting relieves eye strain by adjusting the ambient light levels and maintaining the appropriate contrast ratio to the image on the screen. Two adjustable task lights are integrated into the worksurface.
Additional features	<ul style="list-style-type: none"> • 100 programmable height/tilt presets. • 3 USB ports on the worksurface. • Wraparound 28" high fabric-covered privacy screen. • Air circulation system. • Advanced safety system that protects equipment when lowering the table. • Footrest.
Delivery and installation	Sensitive Carl's Table components require a skilled installer – that's why a Custom Comfort Fitting by Anthro's Field Service Engineer is all part of the package. We meet the shipment at your site, deliver it to the reading room, assemble the table, and work with your IT staff to install your equipment. We also provide a personal fitting for each doctor, to show them how to set their preferred sitting, standing and reclining positions.
Warranty	Lifetime Warranty against manufacturing defects; 5-year warranty on mechanical and electrical components. Cords and plugs are not warranted.
Product # and MSRP	CT12SM/DG (Dark Grey laminate) CT12SM/WE (Wenge laminate) \$12,950 MSRP

STEVE'S STATION®

Steve's Station Advanced

A feature-rich, roomy radiology desk.



Styles and sizes	Dual- and single-surface styles in 60" and 72" widths	
Sit/stand height range (measurements are from the floor to the top of the keyboard surface)	Dual surface: as high as 56" ↓ as low as 17.25"	Single surface: as high as 49" ↓ as low as 23"
Max lift capacity	325 lbs.	
Overall weight capacity	325 lbs.	
Monitor controls and configurations	Monitor Easy Track™ : Manually slide an array of up to 6 monitors forward and back in unison to your optimal focal depth. Adjust monitors up and down with your table height controls.	
Cable management	With the Cable Management System, move the table to any position and the cords stay plugged in and equipment stays in place.	
Number of electrical outlets	3 outlets on the worksurface, 12 outlets in the rear cable compartment.	
Tilt	24° of ergonomic keyboard surface tilt (dual-surface tables only).	
Lighting	Two integrated task lights on the worksurface.	
Additional features	<ul style="list-style-type: none"> • 3 programmable height presets. • 2 USB ports on the worksurface. • Air circulation system. • Advanced safety system that protects equipment when lowering the table. 	
Delivery and installation	The Steve's Station Advanced table arrives at your site assembled – you just install the Cable Management System and Monitor Easy Track using our easy-to-follow instructions. Removable handles (and the aid of some strong helpers) make it easy to lift the table out of its crate and move it into your work space.	
Warranty	Lifetime Warranty against manufacturing defects; 5-year warranty on mechanical and electrical components. Cords and plugs are not warranted.	
Product # and MSRP	Dual surface: STA260GV/DG (60"w in Dark Grey) STA260GV/MP (60"w in Maple) STA260GV/WE (60"w in Wenge) \$6,499 MSRP STA272GV/DG (72"w in Dark Grey) STA272GV/MP (72"w in Maple) STA272GV/WE (72"w in Wenge) \$6,599 MSRP	Single surface: STA160GV/DG (60"w in Dark Grey) STA160GV/MP (60"w in Maple) STA160GV/WE (60"w in Wenge) \$5,999 MSRP STA172GV/DG (72"w in Dark Grey) STA172GV/MP (72"w in Maple) STA172GV/WE (72"w in Wenge) \$6,199 MSRP

Steve's Station Essential

All the essential features you need, at a very competitive price.



Dual-surface "cockpit" style in 60" and 72" widths

as high as 54.5"



as low as 22.25"

200 lbs.

200 lbs.

Monitor Easy Track™: Manually slide an array of up to 6 monitors forward and back in unison to your optimal focal depth. Adjust monitors up and down with your table height controls.

With the Cable Management System, move the table to any position and the cords stay plugged in and equipment stays in place.

No integrated outlets. Optional power bar sold separately.

24° of ergonomic keyboard surface tilt.

n/a

- Tilt-and-go rear wheels help you move the table where you need it.
- **International version available.** Contact Anthro for details.

Ships flat-packed in two boxes for you to assemble using our easy-to-follow instructions.

Lifetime Warranty against manufacturing defects; 5-year warranty on mechanical and electrical components. Cords and plugs are not warranted.

RAD260GV-DG
(60" w in Dark Grey laminate)

RAD260GV-WE
(60" w in Wenge laminate)
\$4,599 MSRP

RAD272GV-DG
(72" w in Dark Grey laminate)

RAD272GV-WE
(72" w in Wenge laminate)
\$4,995 MSRP

ELEVATE™

Elevate Original Single Surface

Electric lift table in 60" and 72" widths.



Elevate Original Corner

A corner desk that makes the most of your space.



Styles and sizes	Single-surface in 60" and 72" widths	L-shaped single surface measures 72" wide by 72" deep
Sit/stand height range (measurements are from the floor to the top of the keyboard surface)	as high as 53" ↓ as low as 27"	as high as 53" ↓ as low as 27"
Max lift capacity	150 lbs.	250 lbs.
Overall weight capacity	250 lbs.	300 lbs.
Monitor controls and configurations	Add up to 6 optional articulating monitor arms that can be adjusted independently.	
Cable management	A 5" deep rear cable trough runs the width of the table – expansive enough to hold optional power strips.	5" deep rear cable troughs run behind each "wing" of the table – expansive enough to hold optional power strips.
Number of electrical outlets	No integrated outlets. Optional power strips sold separately.	
Tilt	n/a	
Lighting	n/a	
Additional features	4" rubber casters help you move the table over uneven surfaces and can be locked into place.	
Delivery and installation	Ships flat-packed in two boxes for you to assemble using our easy-to-follow instructions.	
Warranty	Lifetime Warranty against manufacturing defects; 5-year warranty on mechanical and electrical components. Cords and plugs are not warranted.	
Product # and MSRP	ELTB160SM-BK4 (60" w in Silver Metallic metal) ELTB160BK-BK4 (60" w in Black metal) \$2,569 MSRP ELTB172SM-BK4 (72" w in Silver Metallic metal) ELTB172BK-BK4 (72" w in Black metal) \$2,699 MSRP	ELTBSCM-BK4 (Silver Metallic metal) ELTBCKB-BK4 (Black metal) \$4,929 MSRP

IMAGING TABLE COMPARISON

Use the technical data in this chart to find your perfect reading table that combines the features and price points you need.

SEATING



Complete your workstation
with a really, really, really
comfortable chair.

VERTÉ® CHAIR

"Ergonomics research has established the need for a chair that supports the entire spinal column, head and neck, without creating any pressure points."

Gerald R. Kolb, JD
Rethinking the Radiologist's "Office"
The Digital Reading Environment





DELUXE CHAIR



SUPER CHAIR



BASIC CHAIR

DON'T FORGET THE FOOTREST.

Adding a footrest elevates your knees to relieve pressure on the back of your legs and encourages you to place your hips further back on the seat so that your spine receives the support it needs.



CT CART



Take your imaging hardware on the go on this sturdy height-adjustable cart.



CT Cart adjusts 32.5-48" high, the highest range of any of our small carts.



With large 4" casters and a compact 27x27" footprint, the cart rolls easily into OR and patient treatment rooms.



CT Cart is perfect for **heavy loads**, such as 2 PACS monitors, thanks to its adjustable column and stable H-shaped base.



The optional Cable Management System protects power and data cables as the cart adjusts up and down.

ZIDO®

Small cart. Big options.

ZIDO
ADJUSTABLE HEIGHT



ZIDO
FIXED HEIGHT



ZIDO
POLE
CART



This small cart is both mobile and stable, thanks to large 4" rubber casters and a weighted cast metal base. Shelves wrapped in thermoplastic 3D laminate **resist cracking and chipping** and **stand up to a wide range of chemicals**.

THE PEANUT™



Sweet and simple.
But it's a tough little nut!



This is our smallest cart – nimble enough for up to 10 lbs of equipment. Choose [The Peanut](#) or [The Peanut for Tablets](#).



Move it effortlessly on the 3" twin-wheel rubber casters (2 locking).



The clip-on cable sleeve protects cords along the column.

POC CART

Don't let its small size fool you — the small dog on the block is always the toughest.



With its **small footprint**, **adjustable-height column** and **cable management inside the trunk**, the POC Cart can be configured for hundreds of uses.

eNOOK[®] PRO

Works anywhere
that needs a small
wall-mounted station.



Wall-mounted unit uses zero floor space



Programmable Code Lock



Keep cords and cables inside the unit



36" wide, Large Size



28" wide, Small Size



Available in 2 sizes: 36" wide Large or 28" wide Small.

WALL MOUNTS



Space-saving EMR/OR workstations.



A wide range of arms are available to fit your challenge. Call us to learn more.



Anthro Corporation
10450 SW Manhasset Dr.
Tualatin, OR 97062

800.325.3841
fax: 800.325.0045
sales@anthro.com
radiology-furniture.com

Outside the U.S.
503.691.2556
fax: 503.691.2409

With Anthro, you get more than furniture.

Room Layout Assistance

Put our experience to work for you! We've helped hundreds of facilities make the most of their space to maximize productivity and save money. We can even make recommendations on wall colors, lighting and acoustic options to improve your space. Plus, CAD drawings of our furniture solutions are available for your facilities planner or architect to help make your project planning easier.

Anthro's White Glove Treatment

Anthro handles each Carl's Table CT12 order with kid gloves, from the time it leaves our dock until it's up and running in your reading room. Read more on page 9.

Personal Service

At Anthro, a real person answers the phone in three rings, and everybody who answers the phone can help you with questions about any Anthro product and, in the unlikely event of a problem, will help you troubleshoot a solution.

Anthro has the perfect products for your reading room:



Carl's Table CT12



Steve's Station Essential



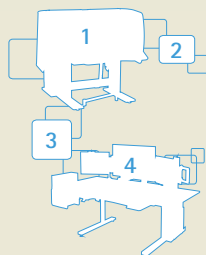
CT Cart

Touchboards
205 Westwood Ave, Long Branch, NJ 07740
Phone: 866-94 BOARDS (26273) / (732)-222-1511
Fax: (732)-222-7088 | E-mail: sales@touchboards.com

Charge and Secure Your Mobile Devices



Ask your Anthro representative for more info on our wall-mounted Tablet Charging Cabinets and YES Charging Carts for your mobile devices.



As shown on the front cover:

- 1) Carl's Table CT12
- 2) Verté Chair
- 3) Elevate Corner
- 4) Steve's Station Essential

AnthroCart®, Carl's Table®, Steve's Station™, Elevate™, Monitor Control System™, Monitor Easy Track™, The Peanut™, Zido®, eNook® and Technology Furniture® are registered trademarks of Anthro Corporation. Verté® is a registered trademark of RFM Seating. 11/14