



# STEVE'S STATION<sup>®</sup>

A reading room workstation that adjusts to you.



## ADVANCED

A Roomy, Feature-Rich Radiology Desk



## ESSENTIAL

The Essential Features You Need,  
At A Very Competitive Price

The Steve's Station family incorporates everything we've learned about imaging furniture over the last 12 years and comes complete with **Sit/Stand Adjustability**, **Monitor Easy Track** and **Cable Management System**.



Look inside for  
more innovative  
Steve's Station  
features...

# STEVE'S STATION

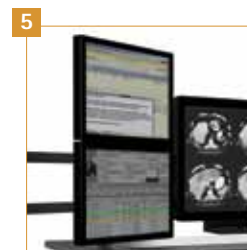
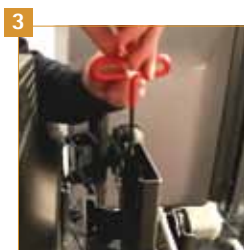
A reading room workstation that adjusts to you.

## Monitor Easy Track™ on Steve's Station Advanced and Steve's Station Essential

**1** Slide the entire bank of monitors in unison to the focal depth you need – then release the clamp to keep them securely in place.



**2** Our patented mounts make it easy to install all of your monitors in perfect alignment.



**3** Make precision adjustments with our provided tools.

**4** Supports 6MP and 10MP diagnostic monitors.

**5** Optional vertical extensions are available for stacking monitors.

## Cable Management System on Steve's Station Advanced and Steve's Station Essential

**6** Slide monitors into their mounts.



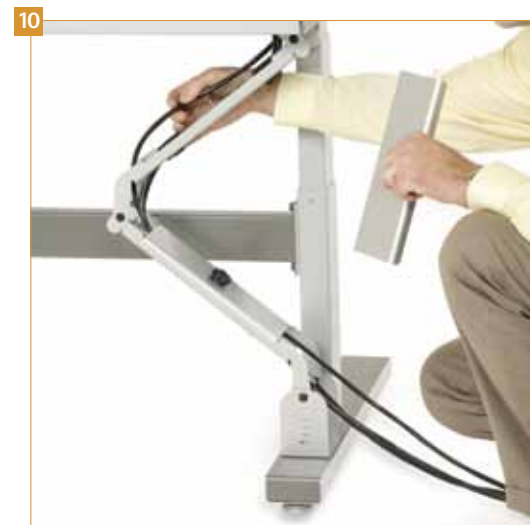
**7** Route monitor cords down the cable channel behind the Monitor Easy Track.

**8** Plug it all into power bricks inside the roomy cable trough.



**9** Secure the door to the cable trough (Advanced tables only).

**10** Never deal with cords yanking or annoying slack, no matter how high you adjust the table, by routing them through our fixed-length cable channels.



Examples shown on Steve's Station Advanced



ADVANCED



ESSENTIAL

## Worksurface Adjustment



**11** Sit or stand with ease using advanced push-button height controls, 3 height presets and LED read-out. *(Steve's Station Advanced only)*

**12** Adjust the height of your worksurface with simple push-button height controls. *(Steve's Station Essential only)*

**13** Raise or lower the front keyboard surface by squeezing the paddle. *(Dual Surface Steve's Station Advanced and Steve's Station Essential only)*

**14** We design all Dual Surface tables with a non-tilting coffee surface.



## Other Innovative Features *on Steve's Station Advanced only*



**15** Two dimmable task lights.

**16** Air Circulation System to keep you cool.

**17** 2 USB Ports.

**18** The Safety System protects equipment when raising or lowering the table.



**Coming Early 2015**  
**Monitor Easy Track**  
Anthro's Stand-alone  
Monitor Control System

See the back for  
Technical Data  
and more Steve's  
Station details!



### Steve's Station Advanced

A feature-rich, roomy radiology desk.



### Steve's Station Essential

All the essential features you need, at a very competitive price.



<b>Styles and sizes</b>	Dual- and single-surface styles in 60" and 72" widths		Dual-surface "cockpit" style in 60" and 72" widths
<b>Sit/stand height range</b> (measurements are from the floor to the top of the keyboard surface)	Dual surface: as high as 56" ↓ as low as 17.25"	Single surface: as high as 49" ↓ as low as 23"	as high as 54.5" ↑↓ as low as 22.25"
<b>Max lift capacity</b>	325 lbs.		200 lbs.
<b>Overall weight capacity</b>	325 lbs.		200 lbs.
<b>Monitor controls and configurations</b>	<p align="center"><b>Monitor Easy Track™</b></p> <p align="center">Manually slide an array of up to 6 monitors forward and back in unison to your optimal focal depth. Adjust monitors up and down with your table height controls.</p>		
<b>Cable management</b>	With the Cable Management System, move the table to any position and the cords stay plugged in and equipment stays in place.		
<b>Number of electrical outlets</b>	3 outlets on the worksurface, 12 outlets in the rear cable compartment.		No integrated outlets. Optional power bar sold separately.
<b>Tilt</b>	24° of ergonomic keyboard surface tilt (dual-surface tables only).		24° of ergonomic keyboard surface tilt.
<b>Lighting</b>	Two integrated task lights on the worksurface.		n/a
<b>Additional features</b>	<ul style="list-style-type: none"> <li>• 3 programmable height presets.</li> <li>• 2 USB ports on the worksurface.</li> <li>• Air circulation system.</li> <li>• Advanced safety system that protects equipment when lowering the table.</li> </ul>		<ul style="list-style-type: none"> <li>• Tilt-and-go rear wheels help you move the table where you need it.</li> <li>• <b>International version available.</b> Contact Anthro for details.</li> </ul>
<b>Delivery and installation</b>	The Steve's Station Advanced table arrives at your site assembled – you just install the Cable Management System and Monitor Easy Track using our easy-to-follow instructions. Removable handles (and the aid of some strong helpers) make it easy to lift the table out of its crate and move it into your work space.		Ships flat-packed in two boxes for you to assemble using our easy-to-follow instructions.
<b>Warranty</b>	Lifetime Warranty against manufacturing defects; 5-year warranty on mechanical and electrical components. Cords and plugs are not warranted.		
<b>Product # and MSRP</b>	Dual surface: <b>STA260GV/DG</b> (60" w in Dark Grey) <b>STA260GV/MP</b> (60" w in Maple) <b>STA260GV/WE</b> (60" w in Wenge) \$6,499 MSRP  <b>STA272GV/DG</b> (72" w in Dark Grey) <b>STA272GV/MP</b> (72" w in Maple) <b>STA272GV/WE</b> (72" w in Wenge) \$6,599 MSRP	Single surface: <b>STA160GV/DG</b> (60" w in Dark Grey) <b>STA160GV/MP</b> (60" w in Maple) <b>STA160GV/WE</b> (60" w in Wenge) \$5,999 MSRP  <b>STA172GV/DG</b> (72" w in Dark Grey) <b>STA172GV/MP</b> (72" w in Maple) <b>STA172GV/WE</b> (72" w in Wenge) \$6,199 MSRP	<b>RAD260GV-DG</b> (60" w in Dark Grey laminate) <b>RAD260GV-WE</b> (60" w in Wenge laminate) \$4,599 MSRP  <b>RAD272GV-DG</b> (72" w in Dark Grey laminate) <b>RAD272GV-WE</b> (72" w in Wenge laminate) \$4,995 MSRP

## Why You'll Love Anthro

### Made in the USA

We design and manufacture in Portland, Oregon to control quality and respond quickly to your needs.

### Technology Is Our Middle Name

For 30 years, we've been staying ahead of your technology needs with our easy-to-use solutions.

### Lifetime Warranty

With Anthro, you get premium materials, quality construction and outstanding service, all of which last a lifetime – the length of our warranty.

## Also From Anthro



**Anthro**  
Technology Furniture®  
800.325.3841  
anthro.com