

argus[®]
thermal imaging from e2v

SAFETY AND
INNOVATION

argus[®]
thermal imaging from e2v

NORTHERN EUROPE
SALES AND SERVICE CENTRE

Argus
e2v, 106 Waterhouse Lane
Chelmsford
Essex, CM1 2QU
England
T +44 (0)1245 453429
F +44 (0)1245 453396
E-mail: argus.enquiries@e2v.com

SOUTHERN EUROPE

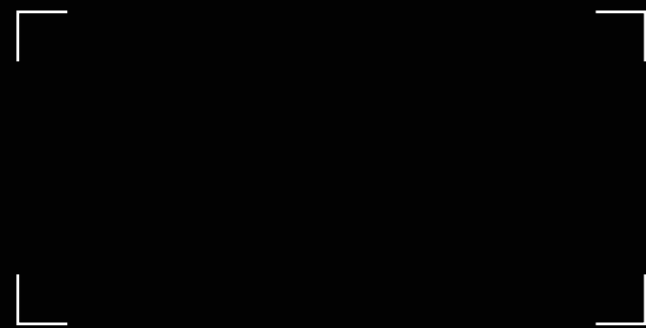
Argus
e2v sas, 16 Burospace
F-91 572 Bièvres
Cedex
France
T +33 (0)1 6019 5500
F +33 (0)1 6019 5529
E-mail: argus.enquiries-fr@e2v.com

AMERICAS
SALES AND SERVICE CENTRE

Argus
e2v inc, 520 White Plains Road
Suite 450
Tarrytown
NY 10591
USA
T: +1 (914) 592 6050 or 1-800-342-5338
F: +1 (914) 592-5148
E-mail: argus.enquiries-na@e2v.com

ASIA PACIFIC

Argus
e2v, 11/F
Onfem Tower
29 Wyndham Street
Central Hong Kong
T +852 3679 364 8/9
F +852 3583 1084
E-mail: argus.enquiries-ap@e2v.com



For more information, or to request a trial of
any of the argus thermal imaging cameras go to

argusdirect.com



argus[®]
thermal imaging from e2v

Job Number

23274

Client

Argus

JOB INFORMATION

Argus 4 brochure

JOB SIZE

A4

NUMBER OF PAGES

4

ORIGINATED BY / DATE

VS 15 - 07 - 2013 (V1)

LAST AMENDED / PROOF NO

VS 24 - 07 - 2013 (V4)

STUDIO POC

VICKI

ARGUS4 IS A FULL-SPEC THERMAL IMAGING CAMERA, SPECIFICALLY DESIGNED FOR FIREFIGHTERS.

Argus is an e2v brand focused on designing and manufacturing the highest quality thermal imaging cameras on the market.

Argus cameras are designed and manufactured using European sourced components, allowing the cameras to be available to the wider export market, and are not subject to the USA ITAR controls (UK export controls apply).



- 3.5inch industrial LCD screen
- Rugged and durable casing
- Uncooled high-resolution 320x240 pixel sensor (HR320 and 160x120 also available)
- Simple 3 button system
- Super-fast start-up time
- x2 and x4 digital zoom
- Multiple wear options
- Less than 3lbs
- Direct Temperature Measurement (DTM)
- Waterproof; sealed to IP67
- Tri-Mode Sensitivity

The Argus4 offers superior image quality, helping firefighters to effectively assess situations, make informed decisions and navigate hazardous environments as safely as possible by locating the best entry and exit points.

The Argus4 has a third level of sensitivity designed for very high scene temperatures to enable clear imagery at all temperatures. This expanded temperature range means that temperatures in excess of 1000°C can be viewed.

TRIED, TESTED AND TRUSTED

Argus thermal imaging cameras have been supplying the world's firefighting institutions for over 30 years and we've combined this extensive experience with the design skills of some of the best engineers in the world to create a series of infrared cameras that are specifically built to take on the toughest and most dangerous environments.

FEATURES INCLUDE:

Unparalleled image quality

High resolution detectors and high definition LCD screen, plus a great deal of engineering know-how provides you with very sharp, very clear images.

Dynamic Screen Colourisation (EDSC)

Colourises the thermal image to allow the firefighter to pin-point the hottest areas within the fire scene.

Direct Temperature Measurement (DTM)

Displays the temperature of objects within a defined area of the thermal scene.

SceneSave Digital Image Capture

The Argus4 can capture and store up to 100 images. Using the software provided, the captured images can be downloaded to a suitable laptop/PC and exported in various formats.

Long Range Telemetry

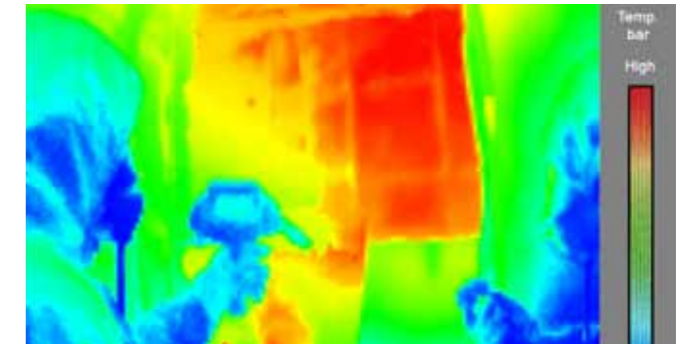
The Argus LRT telemetry system has been designed to allow rugged wireless transmission of thermal images taken by the Argus camera for remote viewing outside of an incident. The technology used in the LRT system is by far the most effective telemetry system on the market today.



KEY APPLICATIONS:

- On-scene incident commanders can see live images from the inside of the fire scene
- Remote strategy planning
- Live data for immediate responses and co-ordination

Inside the Argus4 carry case



A range of clear, intuitive colour modes are available



Locate casualties fast



The retractable lanyard clips to a pocket to leave your hands free and keep your camera safe



A fire scene as seen through the Argus4

The Argus4 can be customised to suit the needs of your team, including upgrades and accessories to ensure you get the most from your thermal imaging camera.

To find out more, or to request a trial go to:

ARGUSDIRECT.COM