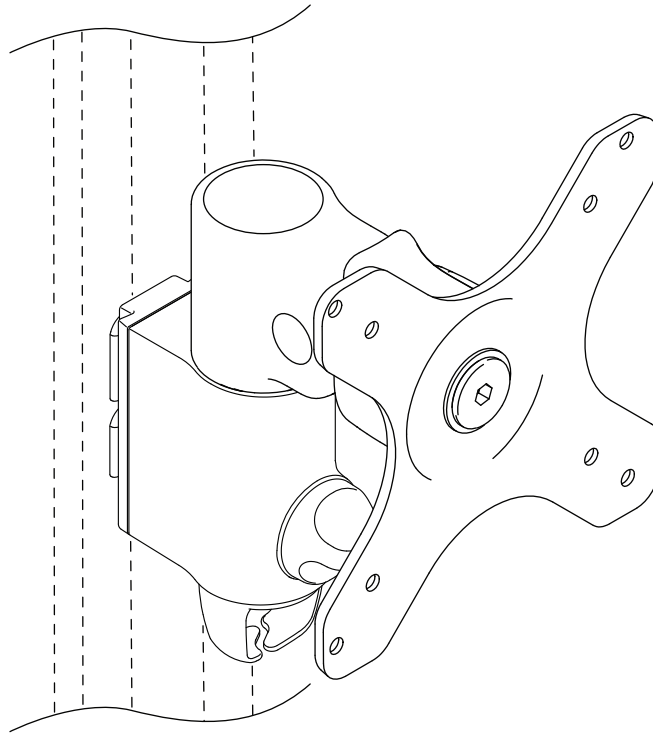
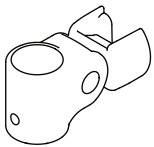


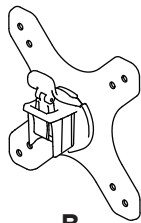
130 Arm



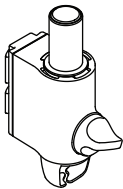
COMPONENT CHECKLIST



A
Monitor Arm
(x1)



B
VESA Head
(x1)



C
Post Clamp
(x1)



D
Screw
M4x25mm
(x4)



E
Screw
M4x16mm
(x4)



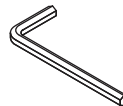
F
Screw
M4x12mm
(x4)



G
Spacer
(x4)



H
Security
screw
(x1)



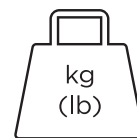
I
4mm
allen key
(x4)



REQUIRED TOOLS

- Phillips Head Screwdriver

WEIGHT RANGE

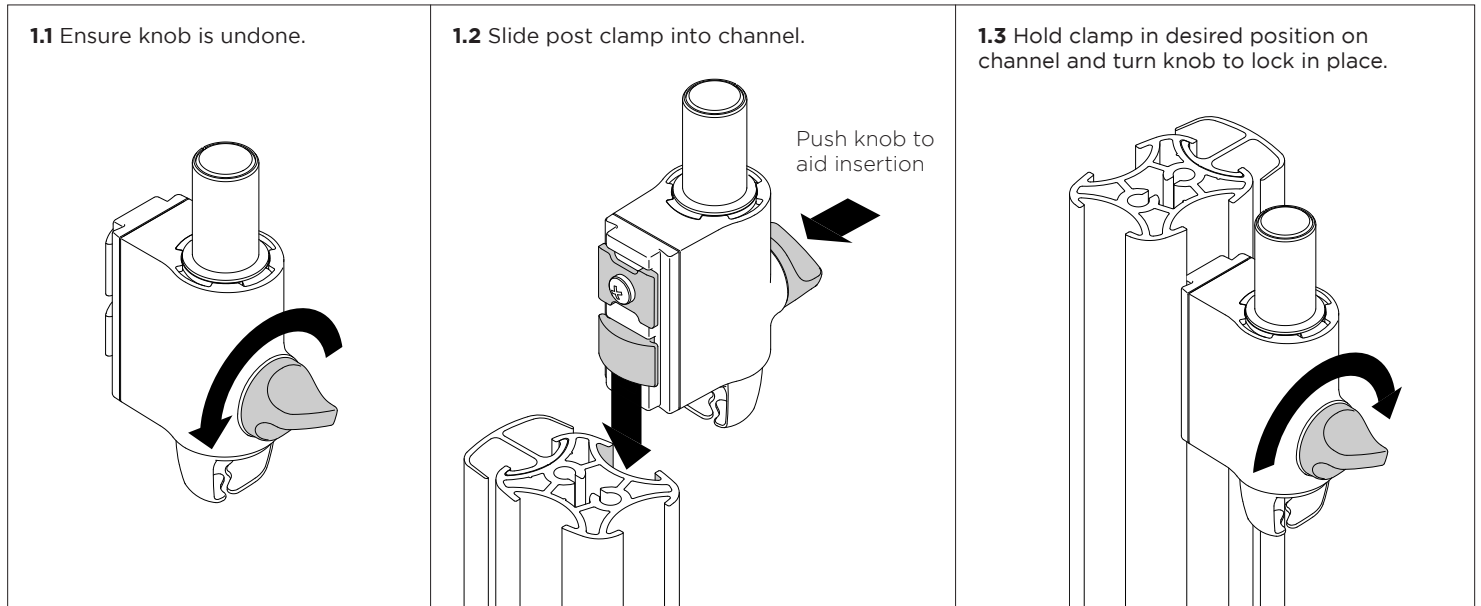


kg
(lb) 0 - 12kg
(0 - 26.5lbs)

IMPORTANT INFORMATION

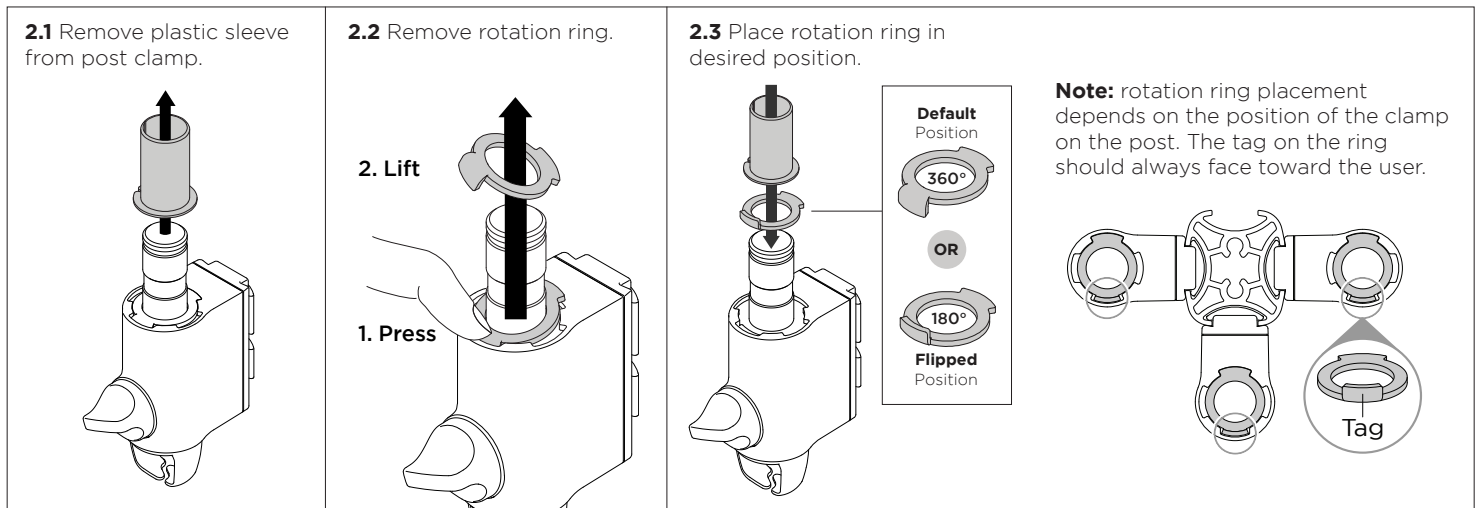
- ! Please ensure this product is installed as per these installation instructions.
- ! The manufacturer accepts no responsibility for incorrect installation.
- ! This product is compatible with Atdec AWM Series products.

1. Fix clamp to Post or Wall Channel

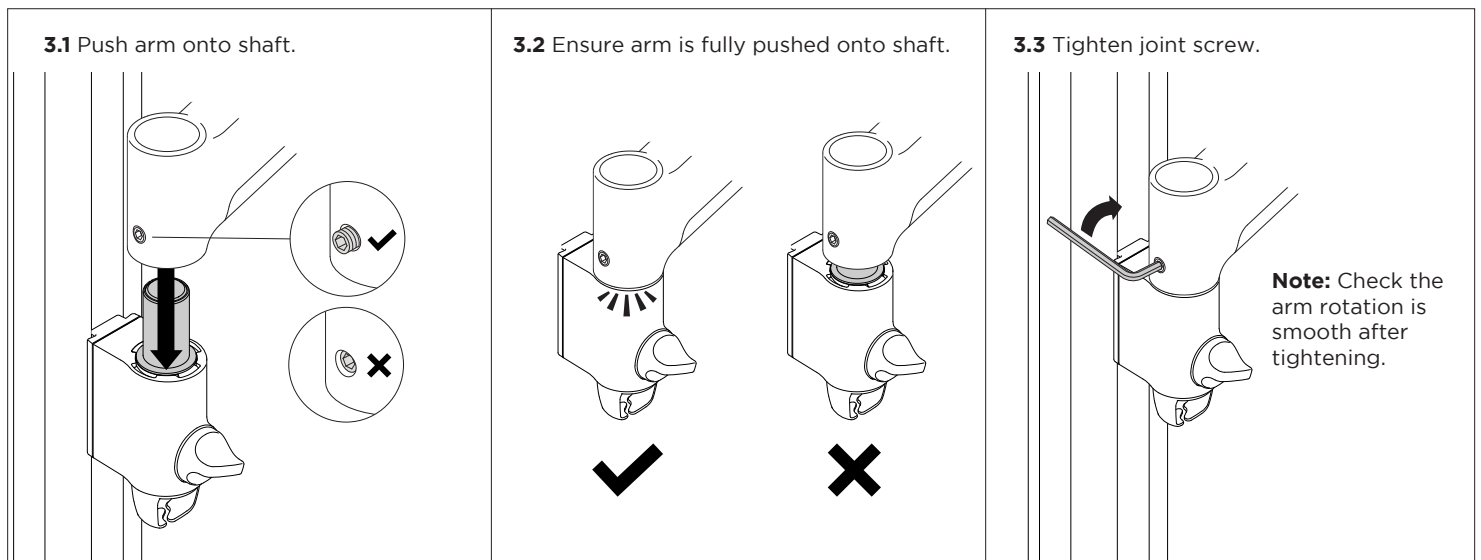


2. Set arm rotation to 180° (optional)

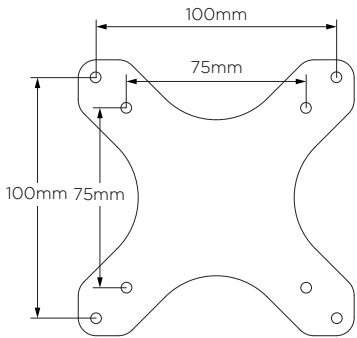
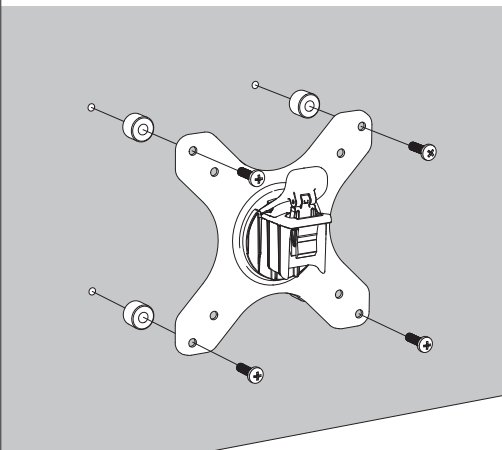
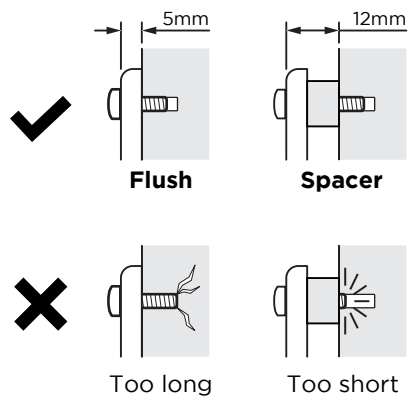
Note rotation is set to 360° by default.



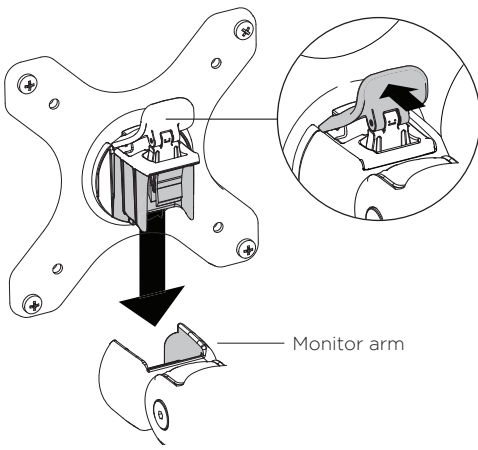
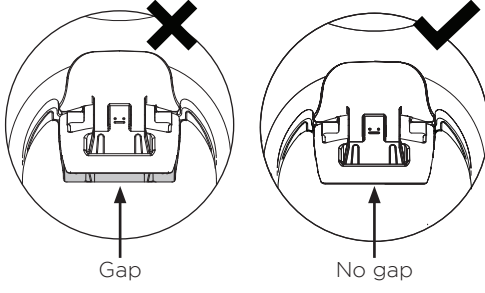
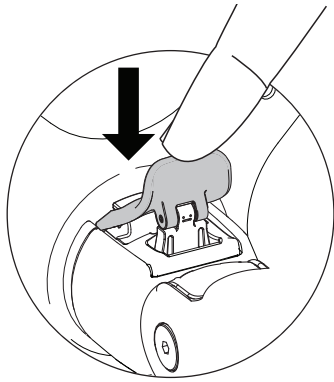
3. Fit arm onto post clamp



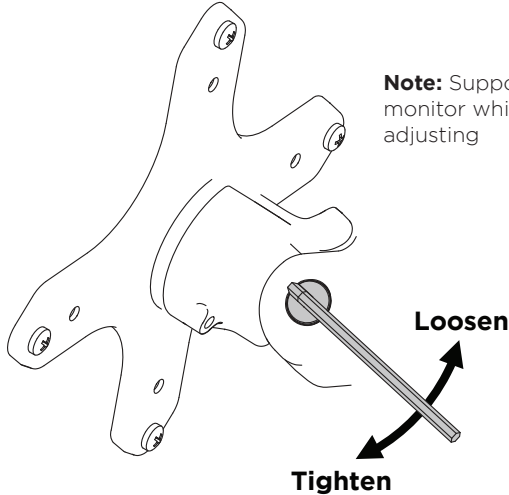
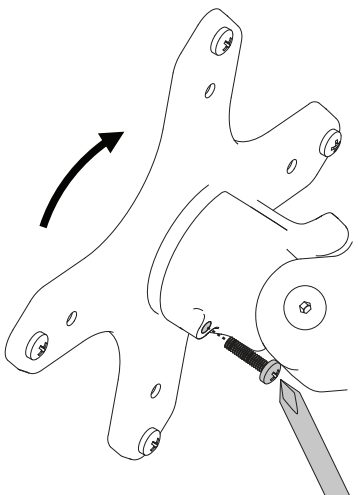
4. Attach VESA head to monitor

<p>4.1 VESA mounting compatibility</p>  <p>Note: For other sizes, use a suitable adaptor plate (sold separately).</p>	<p>4.2 Screw the VESA head onto monitor</p>  <p>Note spacers may be required for curved, recessed or uneven monitor surfaces.</p>	<p>4.3 Ensure the correct screw length is used to attach the monitor.</p>  <p>✓ Flush (5mm) Spacer (12mm)</p> <p>✗ Too long Too short</p>
--	---	---

5. Mount monitor

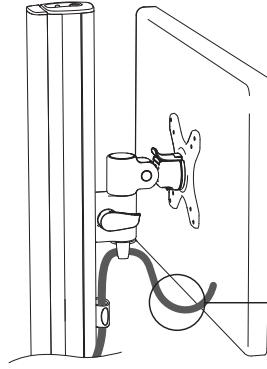
<p>5.1 Insert VESA head into the monitor arm</p>  <p>Monitor arm</p>	<p>5.2 Ensure that the VESA head sits flush within the monitor arm. There should be no gap</p>  <p>Gap No gap</p>	<p>5.3 Push the lever down to secure it to the arm assembly</p> 
--	--	---

6. Adjust tilt tension & Install security screw

<p>6.1 Use the allen key to adjust the tilt tension until the monitor holds in a vertical position at the end of the arm.</p>  <p>Note: Support monitor while adjusting</p> <p>Loosen</p> <p>Tighten</p>	<p>6.2 OPTIONAL security screw To install the optional security screw tilt the head upwards</p> 
---	---

6. Monitor arm cable management

6.1 Plug cables into the monitor and route the cables down the arm using the cable hooks and clips.

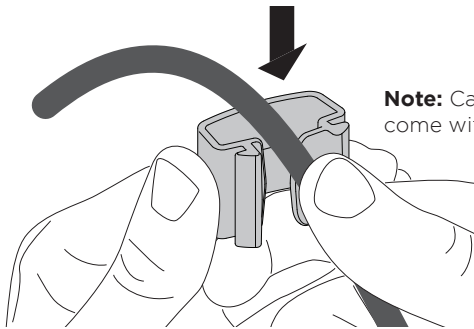


Important:

Ensure enough cable slack is given to allow for movement of the monitor

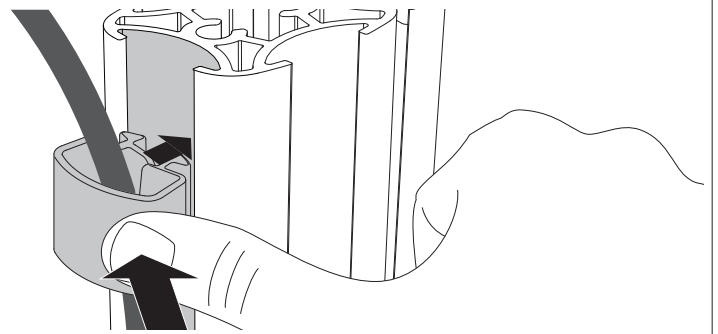
7. Post cable management

7.1 Push the cable down into the cable clip

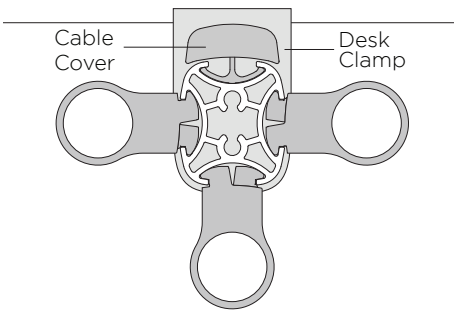


Note: Cable clips do not come with all posts

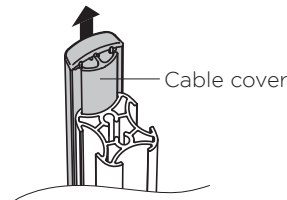
7.2 Push cable clip into post channel



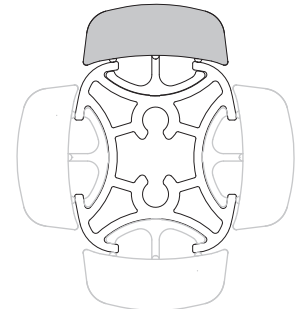
7.3 Recommended post cable cover position for double or triple arm set-ups



7.4 To reposition the cable cover, pull it straight up and out of the post and insert it into any of the available channels

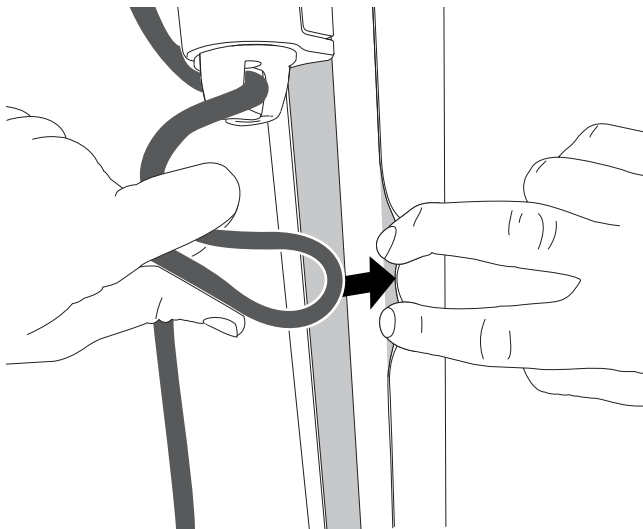


Note: The cable cover shown does not come with all posts



Alternative cable cover positions

7.5 Loop cable and insert into cable cover



7.6 Feed remaining cable into cover

