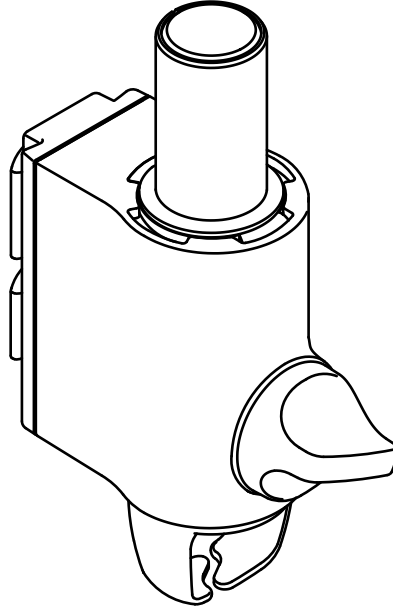
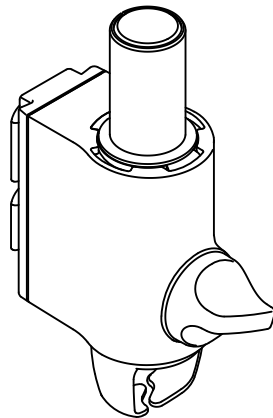


Post Clamp



COMPONENT CHECKLIST



A
Post Clamp
(x1)

Desk 

Wall 

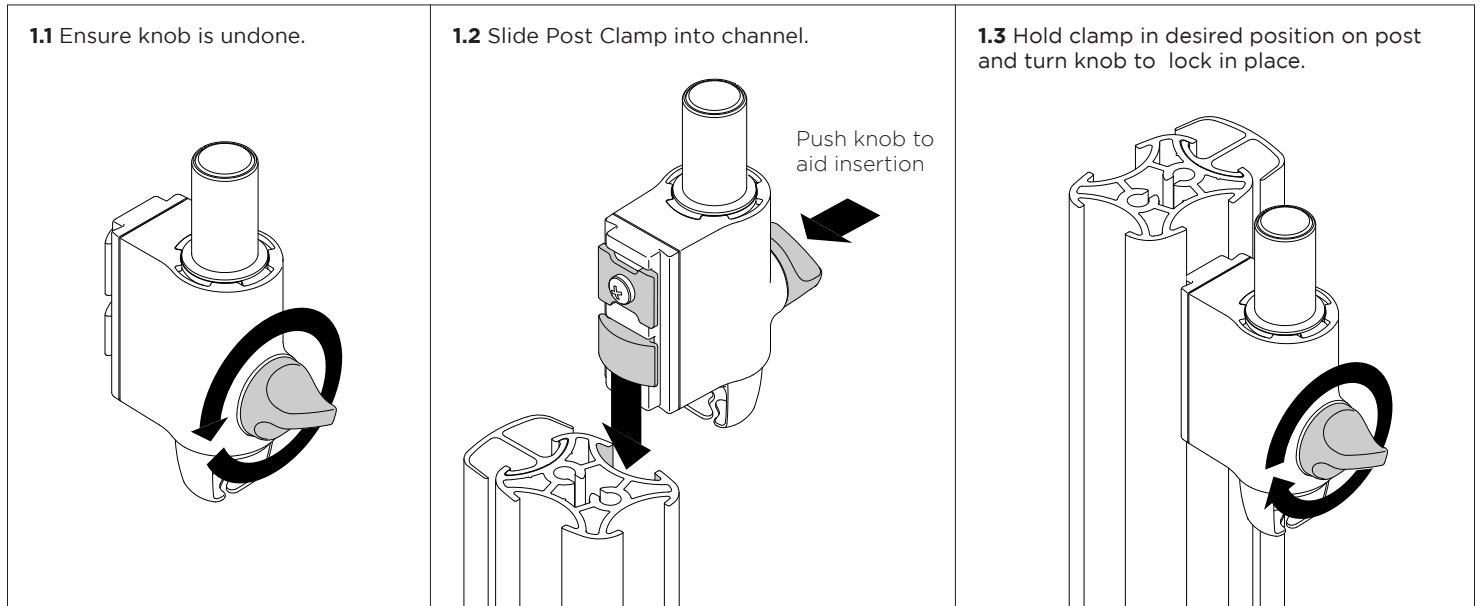
REQUIRED TOOLS

- All tools provided

IMPORTANT INFORMATION

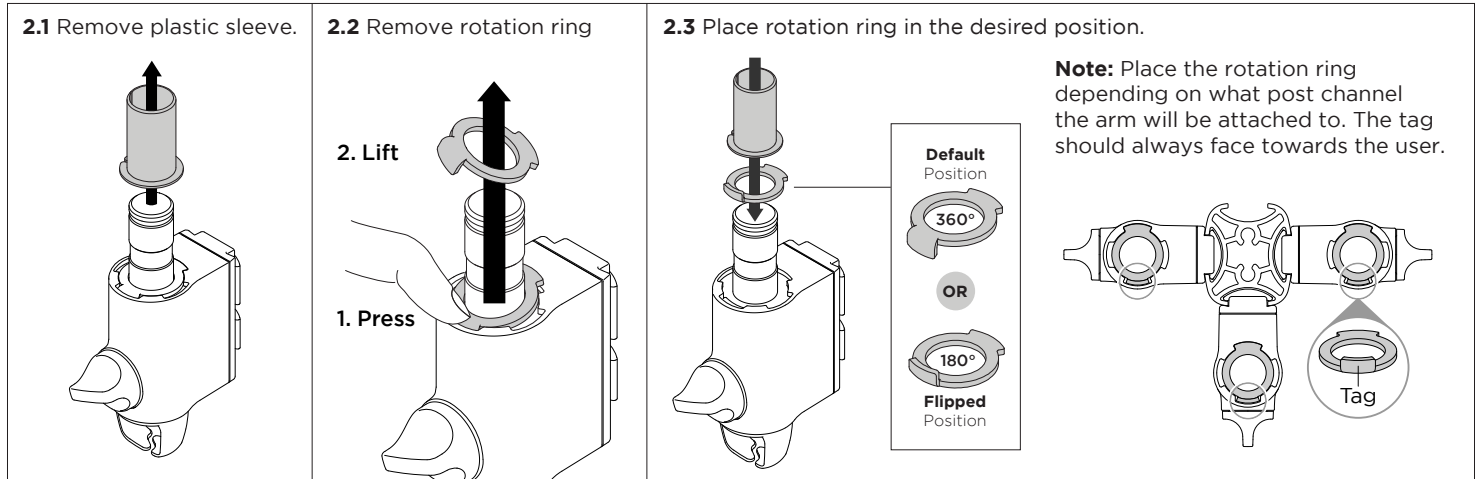
- ! Please ensure this product is installed as per these installation instructions.
- ! This product is compatible with AWM Series Arms, Posts and Wall Channels.
- ! The manufacturer accepts no responsibility for incorrect installation.

1. Fix Clamp to Post or Wall Channel



2. Set arm rotation to 180° (optional)

Note: default arm rotation is set to rotate 360°



3. Fit AWM Series arm to Post Clamp

