

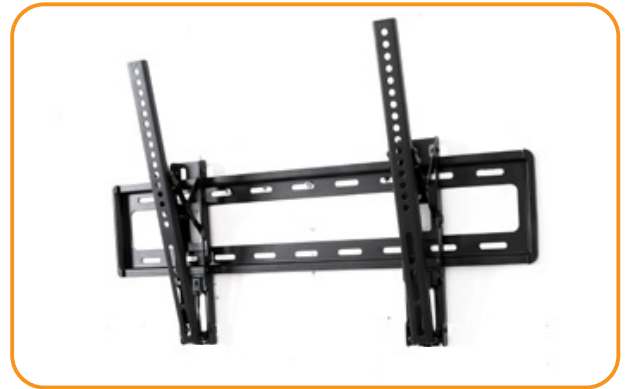


Universal VESA mounting hole pattern:
from 100mm to 600mm wide
from 200mm to 400mm high



Maximum weight carrying capacity:
40kg (88lbs)

The Telehook TH-3065-LPT is a low-profile wall mounting solution for TVs up to 65" in screen size or weighing up to 40kg (88lbs). The slim profile provides a sleek look while quality construction ensures a lifetime of worry-free operation. It is an ideal solution if your display is mounted higher up and requires additional downward tilt to achieve an optimal viewing angle (up to 12° of downward tilt). Universal VESA support ensures a high level of display compatibility. The wall plate incorporates slotted holes for easy alignment during set up while the brackets allow for horizontal post installation adjustments. This durable mount is made of 100% recyclable steel and backed up by our 10 year warranty.



Product key features:

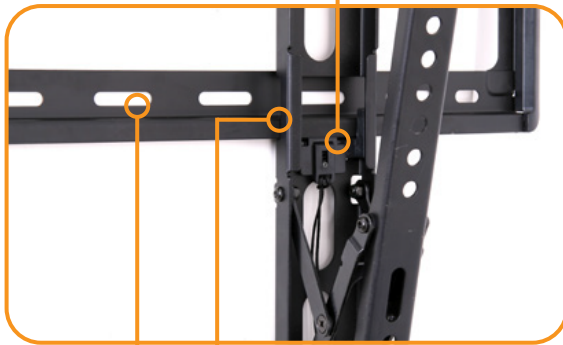
- ☛ Ideal for displays from 32" to 65" in size (measured diagonally)
- ☛ Three piece design for easy assembly and installation
- ☛ Can be mounted to a masonry or two stud timber wall
- ☛ All mounting hardware included
- ☛ Durable steel construction



Quick-release sash pulls

Optimal viewing angle adjustment with up to 12° of tool-less downward tilt

Spring-assisted latching system for safe display attachment



Pre and post installation horizontal position adjustments



Low-profile design only 35mm from wall

Product information

| Product Code | Load capacity | Material | Colour |
|--------------|---------------|----------|--------|
| TH-3065-LPT | 40kg (88lbs) | Steel | Black |

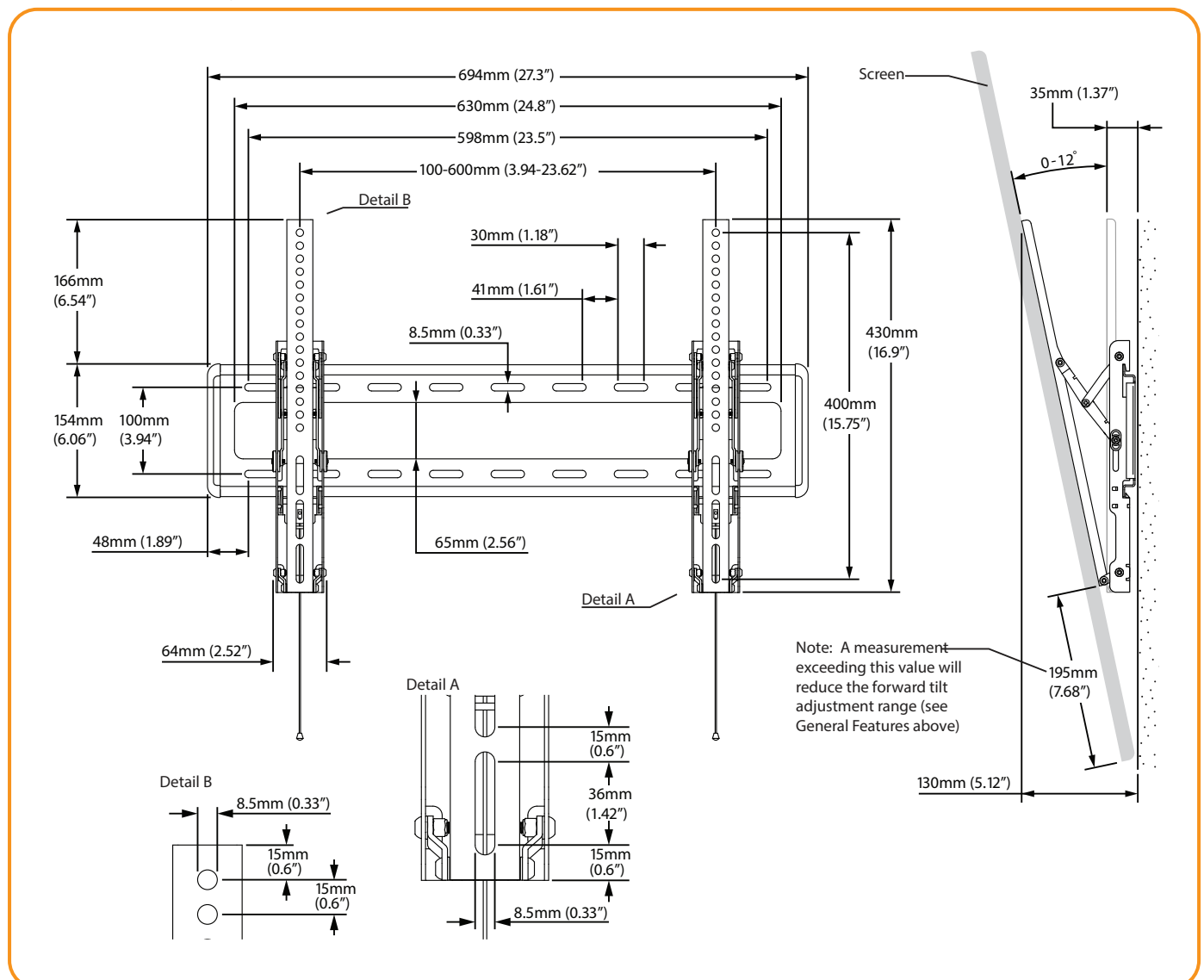
Package information, single unit

| Size | Ship weight | UPC code | Contents |
|--|-----------------|--------------|---|
| 70cm x 16.5cm x 5cm (27.6" x 6.5" x 2") | 2.9kg (6.38lbs) | 933380702946 | All hardware required for installation included |

Package information, master pack

| Size | Ship weight | UPC code | Units per master pack |
|--|-------------------|--------------|-----------------------|
| 72cm x 33cm x 18cm (28.3" x 13" x 7.1") | 18.6kg (40.92lbs) | 933380702953 | 4 |

Technical drawings



Atdec mounts are designed, developed and tested in Australia. While all efforts have been made to ensure the information in this brochure was correct as of the date of printing, we reserve the right to change specifications without notice. Please refer to the website for our full range along with the latest details on specifications, compatibility and dealer location. Atdec and Telehook are registered trademarks with all rights reserved. Copyright October 2015.



Atdec Global www.atdec.com.au
Atdec North America www.atdec.com