

KE6900 / KE6940

DVI KVM Over IP Extender



205 Westwood Ave, Long Branch, NJ 07740
 Phone: 866-94 BOARDS (26273) / (732)-222-1511
 Fax: (732)-222-7088 | E-mail: sales@touchboards.com

- ATEN is well known for delivering innovative technologies that drive connectivity and access management solutions. As such, we introduce the new Altusen™ KE6900 / KE6940 DVI KVM Over IP Extender that brings together a unique blend of features and new technologies that offer the ultimate solution for extending computers to consoles on or off your IT infrastructure.

Utilizing expertise in Over IP KVM solutions, the KE6900 / KE6940 series is an IP based DVI KVM Extender that allows access to a computer system from a remote USB console (USB keyboard, USB mouse, DVI monitor) anywhere over an intranet. The KE6900 Single View Extender supports one DVI display at each end. The KE6940 Dual View Extender supports two DVI displays at each end, allowing the video output to display on two monitors.

The DVI KVM Over IP Extender consists of a Transmitter unit that connects to the computer and a Receiver unit that provides console access from a separate location. The computer is accessed from the remote console over a standard TCP/IP network via Cat 5e cable that allows point-to-point, point-to-multipoint, and multipoint-to-multipoint administration. This is perfect for use in any type of installation where you need to place the console where it is convenient, but you want the computer to reside in a secure location - away from the keyboard, mouse and display in use. As a Matrix Extender it can connect single/multiple: computers-to-consoles in several ways: one-to-one (Extender mode), one-to-many (Splitter mode), many-to-one (Switch mode), or many-to-many (Matrix mode).

The Matrix Manager® software provides advanced features for username/password authentication, auto-detection of all KE6900 / KE6940 devices on the same subnet and define connections that can be switched and shared. New security features also provide extra protection, supporting AES-128bits encryption for secured data transmission, while RADIUS, LDAP, AD or remote user authentication provides added layer of connection security. With an OSD, RS-232 support, and Auto MDIX, the KE6900 / KE6940 is the most cost-effective and convenient way to get a full digital extension from anywhere on the intranet.

● KE6940R Front View



KE6940R Rear View



● KE6940T Front View



KE6940T Rear View



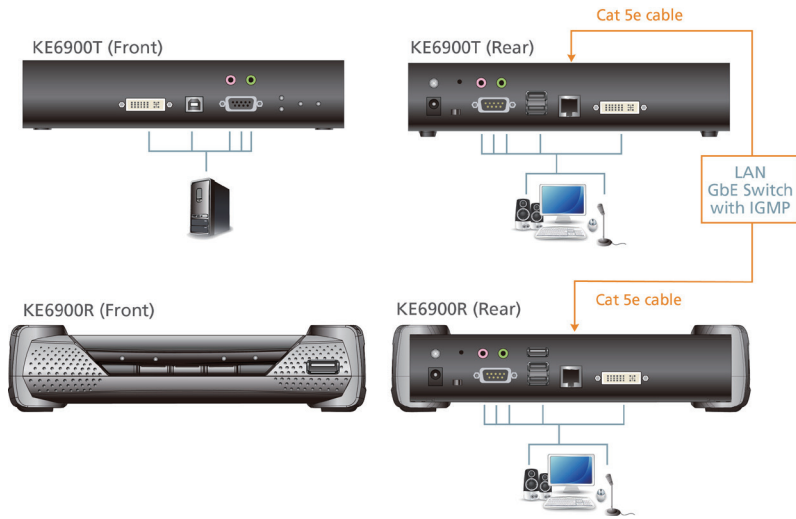
Features

- Remotely access computers on your KVM installation via intranet
- Dual console operation – control your system from both the transmitter and receiver USB keyboard, monitor, and mouse consoles
- RS-232 serial ports – allows you to connect to a serial terminal for configuration, and serial devices such as touchscreens and barcode scanners
- Superior video quality – up to 1920 x 1200 @ 60 Hz; 24-bit color depth
- Supports standard VGA resolutions from 640x480 to 1920x1200 at 60Hz
- OSD (On Screen Display) on both the transmitter and receiver units
- Supports AP GUI operation
- Remote login security
- DVI digital and analog monitor support
- Built-in 8KV/15KV ESD protection and 2KV surge protection
- Supports stereo speakers and stereo microphone
- Auto-MDIX - automatically detects cable type
- Supports widescreen formats
- Support High-Quality Video streaming
- Virtual Media Support
- Hot pluggable
- Rack Mountable
- Upgradeable firmware

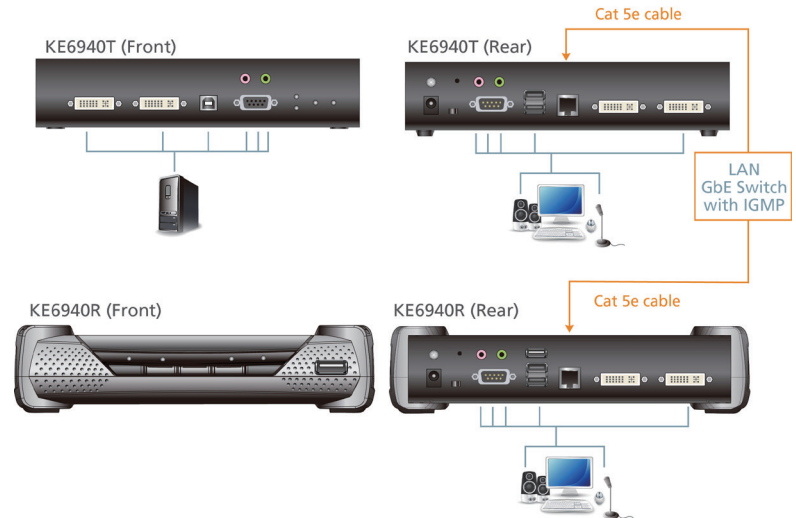
Highlights

Over IP	Extend a computer's KVM console any distance over a LAN by connecting the TX and RX units to your network. Extend a computer's KVM console up to 100 meters by directly connecting the TX and RX units with a single Cat 5e cable.
Flexibility	The KE6900 / KE6940 series allows you to access, share, and switch full control of TX connected computers - from any RX (KVM console) on the network. Flexibly allows One-to-One, One-to-Many, Many-to-One, or Many-to-Many computer to KVM console connections.
Unprecedented Video Quality	ATEN's advanced graphics processor delivers video that ensures you will experience the same vivid and sharp quality on the remote monitor no matter how far away the console is located.
Advanced Management System	The Matrix Manager allows you to easily administer all KE6900 / KE6940 devices over a network, using an intuitive user-friendly web based GUI.
Point-to-Point	Extender mode: This is the simplest setup; using a single transmitter to receiver connection that extends a computer's distance from the keyboard, mouse and monitor. One-to-one setups can be directly connected by a Cat 5e cable between two units - up to 100 meters.
Point-to-Multipoint	Shared Connection: This setup over a network allows a remote computer (TX) to be shared among multiple KVM consoles (RX). Multiple KVM consoles can access the computer at the same time and you can define the access mode when this happens:
Multipoint-to-Point	Switching Connections: This setup over a network allows the KVM consoles to switch access between different computers individually and simultaneously; and allows the streaming of Video, Audio, USB, and Serial connections from different computers.
Multipoint-to-Multipoint	Matrix mode: Delivering flexibility and performance ATEN's KVM Over IP Extender provides the ability to access, switch, share and multicast computer resources among multiple KVM consoles across a network. This provides dynamic and flexible extender setups with superior video quality and smooth KVM operations without delays or lags.

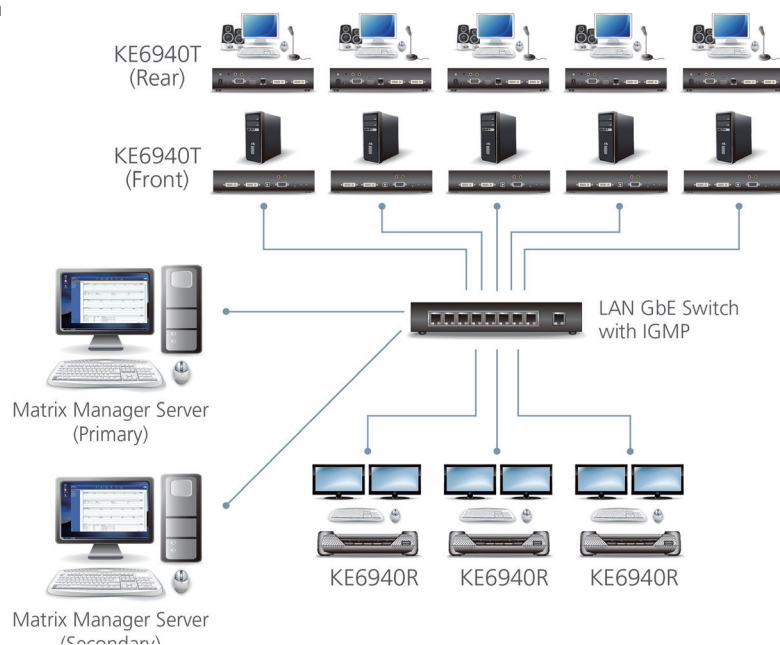
KE6900 Diagram



KE6940 Diagram



Reference Installation Diagram



Specification

Function		KE6900T	KE6940T	KE6900R	KE6940R	
Connectors	USB Virtual Media	N/A		2 x USB Type A Female (White)		
	Console Ports	Keyboard	1 x USB Type A Female (white)			
		Video	1 x DVI-I	2 x DVI-I	1 x DVI-I	2 x DVI-I
		Mouse	1 x USB Type A Female (White)			
		Speaker	1 x Mini Stereo Jack (Pink)			
		Mic.	1 x Mini Stereo Jack (Pink)			
		RS-232	1 x DB-9 Male (Black)			
	KVM Ports	KB / Mouse	1 x USB Type B Female (white)		N/A	
		Speaker	1 x Mini Stereo Jack (Green)		N/A	
		Mic.	1 x Mini Stereo Jack (Pink)		N/A	
		RS-232	1 x DB-9 Female (Black)		N/A	
		Video	1 x DVI-I	2 x DVI-I	N/A	
	Power	1 x DC Jack (Black)				
	LAN	1 x RJ-45 (Black)				
	Switches	OSD	N/A		1 x Pushbutton	
Video		N/A		1 x Pushbutton		
Graphics		N/A		1 x Pushbutton		
Console Selection / FW Upgrade		1 x Slide switch				
Reset		1 x Semi-recessed Pushbutton				
LEDs	LAN	1 (Green / Orange)				
	Power	1 (Blue)				
	Local	1 (Green)				
	Remote	1 (Green)				
Emulation	Keyboard / Mouse	USB				
Power Consumption	DC 5V					
Video Resolution	Up to 1920 x 1200 @60Hz					
Environment	Operating Temp.	0–50°C				
	Storage Temp	-20–60°C				
	Humidity	0–95% RH, Non-condensing				
Physical Properties	Housing	Metal				
	Weight (kg)	1.14 kg	1.15 kg	1.25 kg	1.25 kg	
	Dimensions (L x W x H)	21.50 x 16.29 x 4.56 cm	21.50 x 16.29 x 4.56 cm	22.75 x 17.16 x 5.48 cm	22.75 x 17.16 x 5.48 cm	

