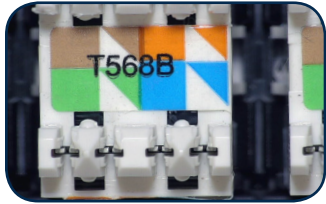
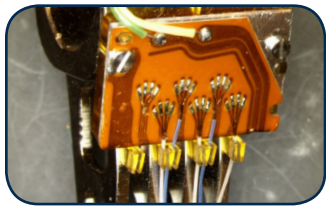
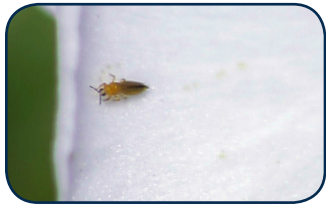


SharpVue® XT

Capture Images to USB Drive	30x Optical	DisplayPort & USB Outputs	Includes Imaging Software
No PC Required	Up to 300x Digital	1080p High-Res Imaging	Annotate & Measure



Save images and video, no computer required!

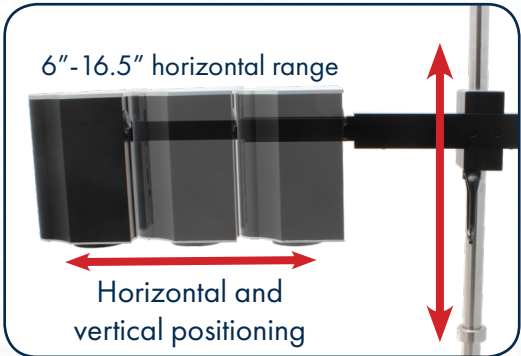


Backside



Built-in image capture to USB drive

DisplayPort output



Cutting-Edge Technology Meets Flexibility


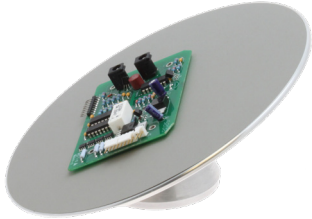



The SharpVue® XT camera is mounted to a telescoping arm with a **horizontal range of 6in to 16.5in**, giving users the ability to adjust the camera position both horizontally and vertically. This innovative feature allows users to upgrade their magnification or working distance, as well as scan over larger objects. The SharpVue® XT utilizes the same advanced camera technology as the SharpVue® Plus with the same USB/DisplayPort outputs and the ability to save images to a USB drive. This system comes complete with an ESD Safe **22in post stand with a 11.5in x 17.7in base**. Equipped with cutting-edge software that allows users to capture images and videos, make accurate measurements, draw lines and shapes, and more.

Features:

- 30x optical, up to 300x digital magnification
- DisplayPort and USB outputs
- Adjustable vertical and horizontal positioning
- Auto focus camera
- Includes remote control for on-screen settings

SharpVue XT	
Item Number	26700-137
Magnification	30x optical, up to 300 digital
Camera	Auto focus
Illumination	Sold separately
Base Dimensions	11.5in x 17.7in
Outputs	DisplayPort and USB
Operating Systems	Windows 7/8/10
Package Contents	SharpVue® XT Inspection System, remote, power supply, DisplayPort cable, mini USB cable, USB drive, grounding cable, user manual, software

SharpVue® XT Accessories

SharpVue® XT Accessories			
Item Number	Image	Name	Description
26700-135-4D		SharpVue® 4D Lens	<ul style="list-style-type: none"> • Extends magnification to 2x-52x optical and up to 580x digital
26700-135-TTB		SharpVue® Tilttable Table	<ul style="list-style-type: none"> • 360° of tiltable area • Tilts up to 45° • ESD safe
26200B-221		LED Dual Gooseneck Spotlight Illuminator	<ul style="list-style-type: none"> • External light source for high-magnification inspection systems • Provides bright, even lighting • Versatile, adjustable illumination at any angle • 6500K cool light LED illuminator • UV Goosenecks sold separately
26700-135-RC		Replacement Remote Control	Replacement remote control for the SharpVue® XT
26700-406		22-Inch LCD Monitor	<ul style="list-style-type: none"> • 1080p HD • HDMI outputs • Slim and elegant design, VESA mountable • LED back-lit, smart contrast ratio