



Mighty Cam ES

HDMI/USB Camera designed for quick & accurate inspection

Micro Lens

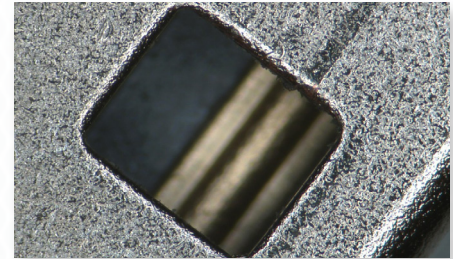
28.8x - 384x Magnification

Heavy Duty Post Stand

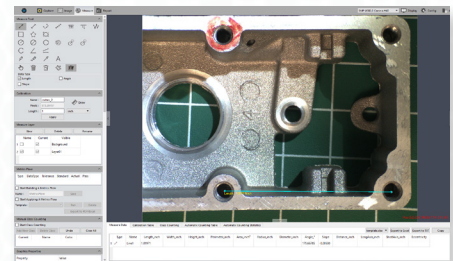
Accommodates a large variety of parts

LED Ring Light

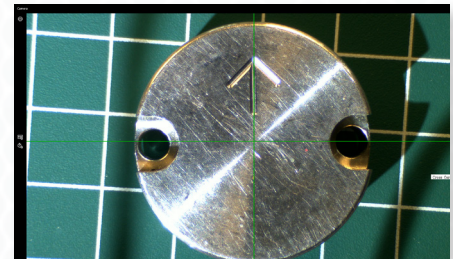
Provides uniformity & shadow free illumination



Excellent Color Reproduction



USB Mode- Advanced Imaging/ Measurement Software Included



HDMI Mode: Image/Video Capture, On-Screen Tools (No PC required)

Mighty Cam ES

[28.8x-384x] w/ Micro Lens & Post Stand

High Definition 1080p inspection system with a 22" monitor offering superb image quality. **Provides a magnification range of 28.8x to 384x.** You can operate this system with or without a PC. Without a PC, the camera connects directly to the included HDMI monitor. View and record images using the included on screen tools. Images & videos can be saved to the included SD card. Connect the camera to a PC to utilize more advanced features in the included software. The included LED ring light allows you to illuminate the object to get the sharpest and greatest detail.

Features

- 57.6x - 384x Magnification (28.8x - 192x when using the 0.5x objective lens)
- Camera features HDMI and USB outputs for use with an HD monitor or PC
- Save high resolution image/video files to the included SD Card - no PC required
- Advanced imaging/measurement software included for PC mode
- LED ring light with 96 ultra-bright, adjustable LEDs

Mighty Cam ES			
28.8x-384x w/ Micro Lens & Post Stand			
Item #	26700-109-ES		
Magnification	28.8x-384x		
Working Distance	82mm (w/ 1x Objective & 1x Coupler)		
Interface	USB 2.0 & HDMI		
Resolution	2MP 2592 (H) x 1944 (V)		
Frame Rate	<table border="1"> <tr> <td>USB 2.0 @ 15FPS</td> <td>HDMI @ 15FPS</td> </tr> </table>	USB 2.0 @ 15FPS	HDMI @ 15FPS
USB 2.0 @ 15FPS	HDMI @ 15FPS		
Software	<table border="1"> <tr> <td>USB 2.0 Mosaic V2</td> <td>HDMI Cloud 1.0 ver</td> </tr> </table>	USB 2.0 Mosaic V2	HDMI Cloud 1.0 ver
USB 2.0 Mosaic V2	HDMI Cloud 1.0 ver		
Package Contents	<ul style="list-style-type: none"> • Mighty Cam ES (26100-259) • Micro Lens (26700-151) • Standard Post Stand (26800B-571) • LED Ring Light (26200B-216) • N-Type Focus Mount (26800B-578) • 22" LCD HD Monitor (26700-406) • 0.5x Coupler (26700-156) 		