



**Ball Joint 360
Rotation**

Mighty Cam ES

[7x-70x] w/ Macro Lens & Ultra-Glide Stand

High Definition 1080p inspection system with a 22" monitor offering superb image quality. **Provides a magnification range of 7x to 70x with a 6" working distance.** You can operate this system with or without a PC. Without a PC, the camera connects directly to the included HDMI monitor. View and record images using the included on screen tools. Images & videos can be saved to the included SD card. Connect the camera to a PC to utilize more advanced features in the included software. The included dual gooseneck LED light allows you to illuminate the object to get the sharpest and greatest detail.

Features

- Camera features HDMI and USB outputs
- Inspect directly on an HD monitor or from a computer
- Advanced imaging/measurement software included
- 7x - 70x magnification at a 6 inch working distance
- Ultra Glide Arm Stand provides smooth horizontal movement
- Includes Aven's Dual Gooseneck LED Task Light and a 22" HD monitor

Mighty Cam ES

HDMI/USB Camera designed for quick & accurate inspection

Macro Lens

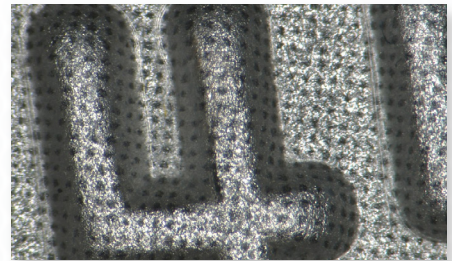
7x - 70x Magnification at a 6" working distance

Ultra Glide Arm Stand

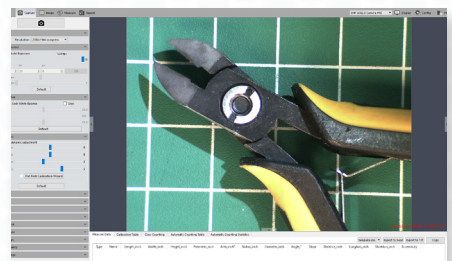
Provides smooth horizontal movement

360 Ball Joint

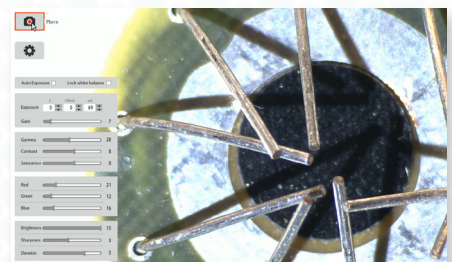
Rotate & tilt the camera to the ideal position



Excellent Color Reproduction



**USB Mode- Advanced Imaging/
Measurement Software Included**



**HDMI Mode: Image/Video Capture,
On-Screen Tools (No PC required)**

Mighty Cam ES		
7x-70x w/ Macro Lens & Ultra-Glide Stand		
Item #	258-181-556-ES	
Magnification	7x-70x	
Working Distance	6"	
Interface	USB 2.0 & HDMI	
Resolution	2MP 2592 (H) x 1944 (V)	
Frame Rate	USB 2.0 @ 15FPS	HDMI @ 15FPS
Software	USB 2.0 Mosaic V2	HDMI Cloud 1.0 ver
Package Contents	<ul style="list-style-type: none"> • Mighty Cam ES (26100-259) • Ultra Glide Arm Stand (26800B-556) • Computer Macro Lens (26700-181) • Dual Gooseneck LED Task Light (26537) • 22" HD Monitor (26700-406) • 360 Swivel Ball Joint (26700-412) 	