

# Mighty Cam 3.0

USB 6 Megapixel Sensor & Imaging Software

6 Megapixel  
Sensor

Stunning High-  
Resolution

USB 3.0  
Output

Minimal Lag  
Time

Save & Share  
Images

Imaging  
Software



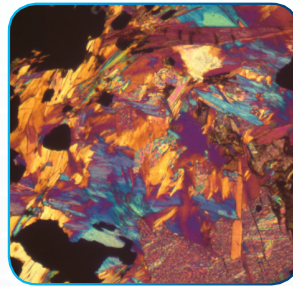
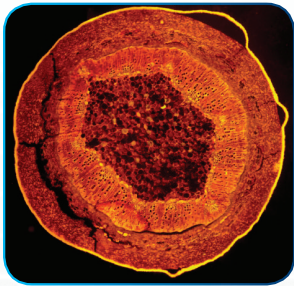
Professional Sony 6M  
CMOS Sensor



Easy Plug-and-Play USB  
3.0 Output

Universal  
c-mount

Shown on  
an Aven  
Stereo Zoom  
Microscope



## Inspect from your Computer in Real Time

Introducing Aven's Mighty Cam USB 6M CMOS Camera with imaging and measurement software. Create stunning images with outstanding clarity then measure, annotate and analyze easily with Mosaic 2.0. The Mighty Cam is equipped with a 6 megapixel sensor and a USB 3.0 output, providing stunning, true-to-life images with minimal lag time.

- 6 megapixel sensor
- Universal c-mount lens
- USB 3.0 output for stunning images at minimal lag time
- Imaging and measurement software to save, share, and manipulate images

### MIGHTY CAM 3.0 USB CAMERA W/ IMAGING SOFTWARE

<b>SKU</b>	26100-244
<b>SENSOR</b>	CMOS, 1/1.8"
<b>PIXEL SIZE</b>	2.4 x 2.4(μm)
<b>RESOLUTION</b>	3072(H) x 2048(V)
<b>FRAME RATE</b>	40fps @6MP
<b>SHUTTER MODE</b>	Global
<b>CONFIGURATION</b>	CPU: Intel Core i5 or better (Quad or more Core), RAM: 8G or more, OS: Windows 7/8/10 64bit
<b>WEIGHT</b>	330g
<b>PRICE</b>	\$749.00

# Mighty Cam 3.0

Mac and PC Imaging Software

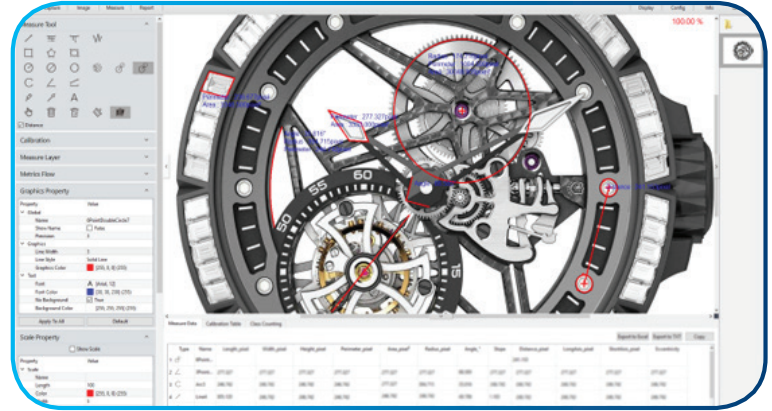
Save & Share  
Images  
Record  
Video

Advanced  
Settings  
Adjust Depth  
of Field

Panoramic  
Images  
Real Time  
Stitching

## Measure, Annotate, Record Video

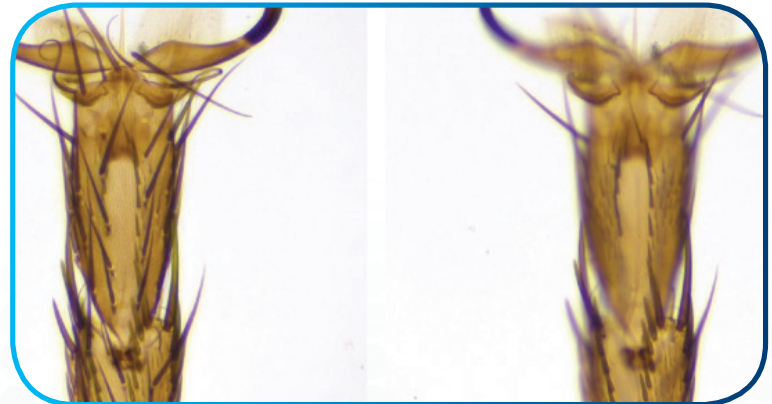
Adjust, annotate, and capture images to share. Records video and measures shapes instantaneously. Auto settings include color scale and white balance, manual settings include gain, noise reduction, gamma, and flat field correction.



Measure shapes and capture images and video

## Adjust Depth of Field

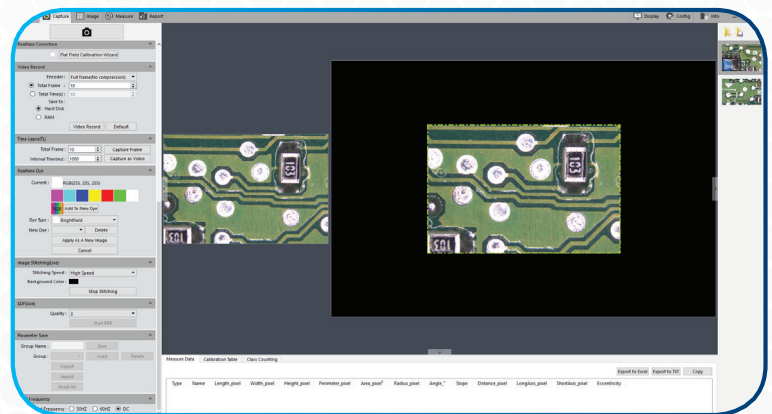
The imaging and measurement software is equipped with real-time depth of field fusion. By adjusting the focus ring, different depth of field points are captured while generating clear depth of field images.



Adjust the depth of field in real time

## Real-Time Image Stitching

The “real time stitching” function generates large-sized mosaic images in seconds by moving the subject under the lens.



A 160 megapixel panoramic image obtained through real time stitching

### IMAGING SOFTWARE

<b>CONFIGURATION</b>	CPU: Intel Core i5 or better (Quad or more Core), RAM: 8G or more, OS: Windows 7/8/10 64bit
<b>SETTINGS</b>	Auto: color scale, white balance Manual: gain, noise reduction, gamma, flat field correction