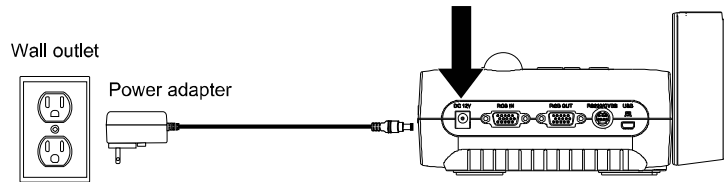


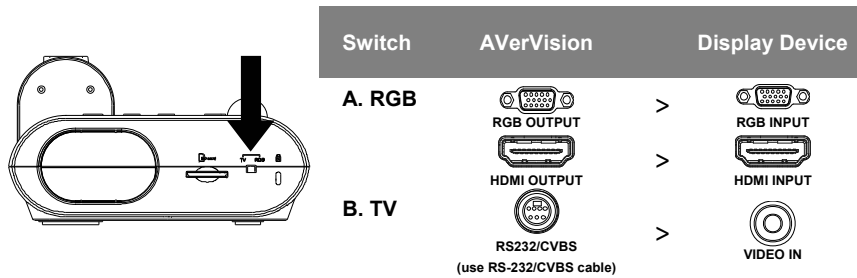
# AVerVision F50-8M

## Quick Guide

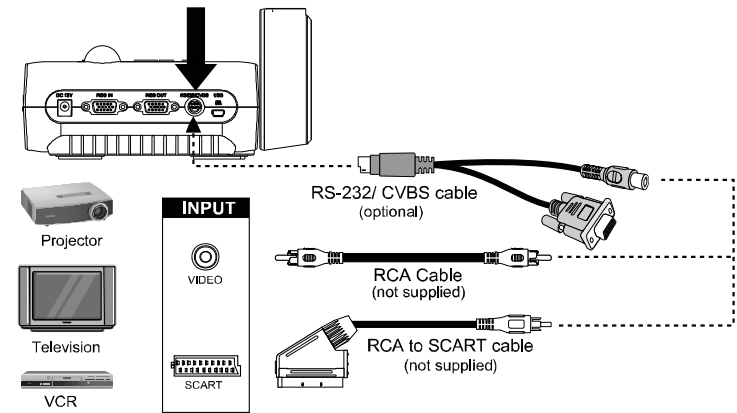
(1)



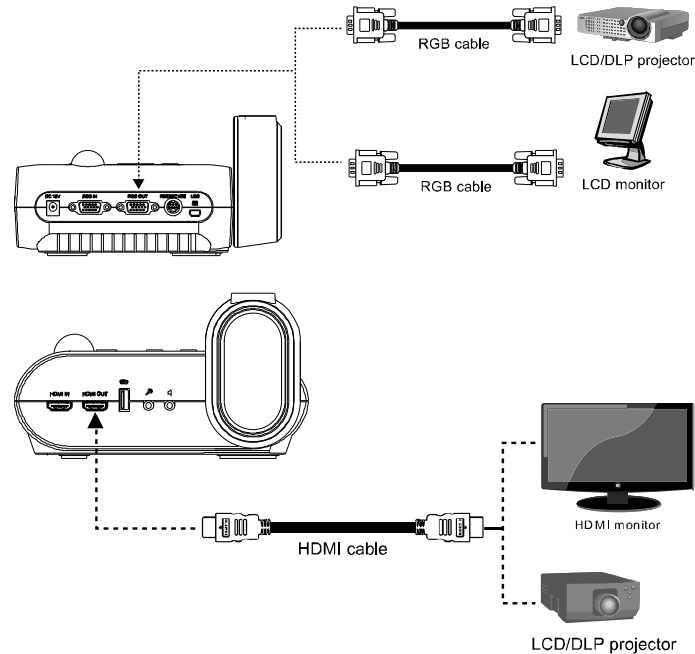
(2)



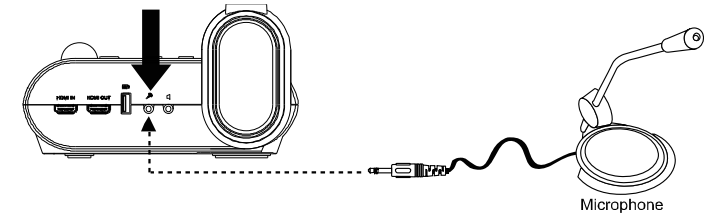
(3-B)



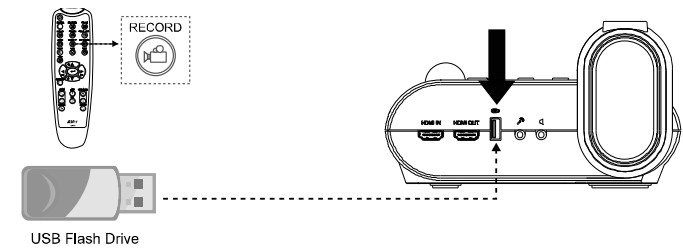
(3-A)



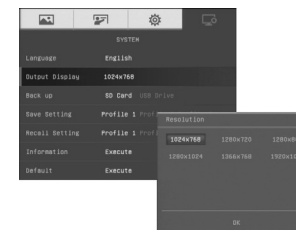
(4)



(5)



(6)

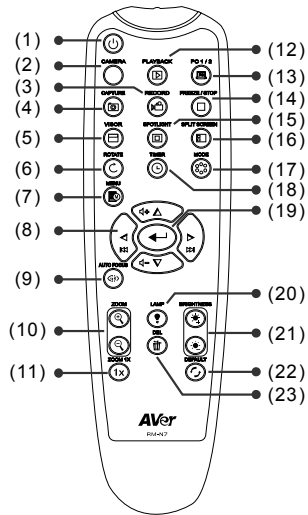


### Output Display

Set the resolution to display the image on screen. This selection will be disabled in TV output mode.

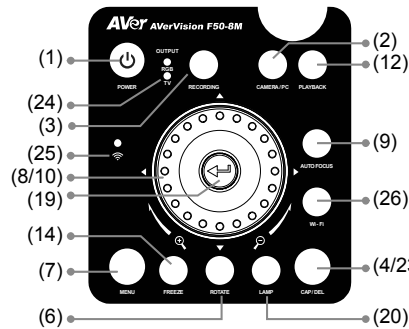
## Remote Control

The remote control requires two (2) "AAA" size batteries (supplied), make sure batteries are installed properly before use.



Name	Function
(1) POWER	Turn the unit on/standby.
(2) CAMERA	Camera mode displays the video signal from the built-in camera.
(3) RECORD	Start/Stop audio & video recording. Video recording can only be saved either in a SD memory card or a USB flash drive.
(4) CAPTURE	Capture still image in Camera mode. In continuous capture mode, press this button again to stop.
(5) VISOR	Cover part of the presentation screen and allow presenter to reveal the material as desire.
(6) ROTATE	Rotate the image by 0/180° in Camera mode and Playback mode.
(7) MENU	Open and exit the OSD menu. Show a thumbnail size captured picture/video from the memory at the corner of the screen in Camera mode.
(8) ▲, ▼, ◀, ▶	<ul style="list-style-type: none"> <li>- Pan the image when image is above 10X zoom in live mode or in playback captured image mode.</li> <li>- Move the selection in Playback mode and in OSD menu.</li> <li>- Use ▲&amp;▼ to increase and decrease the video playback volume.</li> <li>- Use ◀&amp;▶ to play the video backward and forward.</li> <li>- Move the Spotlight frame and Visor screen cover.</li> </ul>
(9) AUTO FOCUS	Adjust the focus automatically.
(10) ZOOM +/-	<ul style="list-style-type: none"> <li>- Increase/decrease the image magnification in camera and picture playback mode.</li> <li>- Use to easily page up and page down 16-thumbnail picture preview.</li> </ul>
(11) ZOOM 1X	Reset zoom level to 100%.
(12) PLAYBACK	View the captured picture/video from the memory in 16-thumbnail images.
(13) PC 1/2	PC mode displays the video signal from the RGB/HDMI INPUT port of F50-8M.
(14) FREEZE / STOP	<ul style="list-style-type: none"> <li>- Freeze live images.</li> <li>- Stop video playback.</li> </ul>
(15) SPOTLIGHT	Call the Spotlight submenu. Spotlight overlays a box frame on the presentation screen. You can adjust the box size and move it around.
(16) SPLIT SCREEN	Divide the screen into two. One side displays the live image from the built-in camera and the other side displays 8-thumbnail size picture/video from the memory.

Name	Function
(17) MODE	Select from 6 type of modes: <b>Sharp</b> - adjust the contrast along the edges making text appear more visible. <b>Graphics</b> - adjust the gradient of image. <b>Motion</b> - increase frame rate. Sufficient lighting is required when using this mode. <b>Microscope</b> - automatically adjust optical zoom for microscopic viewing. <b>*Macro</b> - set to view when object is only 5 – 10 cm away from the camera. <b>*Infinite</b> - set to view when subject is at least 80cm away from the camera.
(18) TIMER	Start/Pause/Stop the timer countdown and set the timer duration.
(19) ⏪	<ul style="list-style-type: none"> <li>- Make a selection in Playback mode and OSD menu.</li> <li>- Play/Pause video playback</li> </ul>
(20) LAMP	Turn the overhead light on/off.
(21) BRIGHTNESS +/-	Adjust the brightness.
(22) DEFAULT	Reset at factory default setting.
(23) DEL	Delete the selected picture/video in Playback mode.



Name	Function
(24) OUTPUT LED	Indicate the TV-RGB switch selection to which port the video signal is sent out.
(25) WiFi LED*	<ul style="list-style-type: none"> <li>- <b>Flashing Blue:</b> Searching WiFi router or connecting to WiFi router</li> <li>- <b>Solid Blue:</b> Connected to WiFi router</li> <li>- <b>Slow Flashing Blue:</b> Sending stream to other device/APP</li> <li>- <b>OFF:</b> WiFi function is not activating.</li> </ul>
(26) WiFi*	Switch between USB mode and WiFi mode. In WiFi mode, the LED will light up (blue). Press WiFi button over 3 seconds to activate auto search WiFi router.

\* (25) & (26) are optional functions.

For User Manual, Software and WiFi functions, please visit the link below.

<http://averusa.com/classroom-technology/support/>

For Warranty information, please visit the link below.

<http://www.averusa.com/classroom-technology/support/warranty.asp>