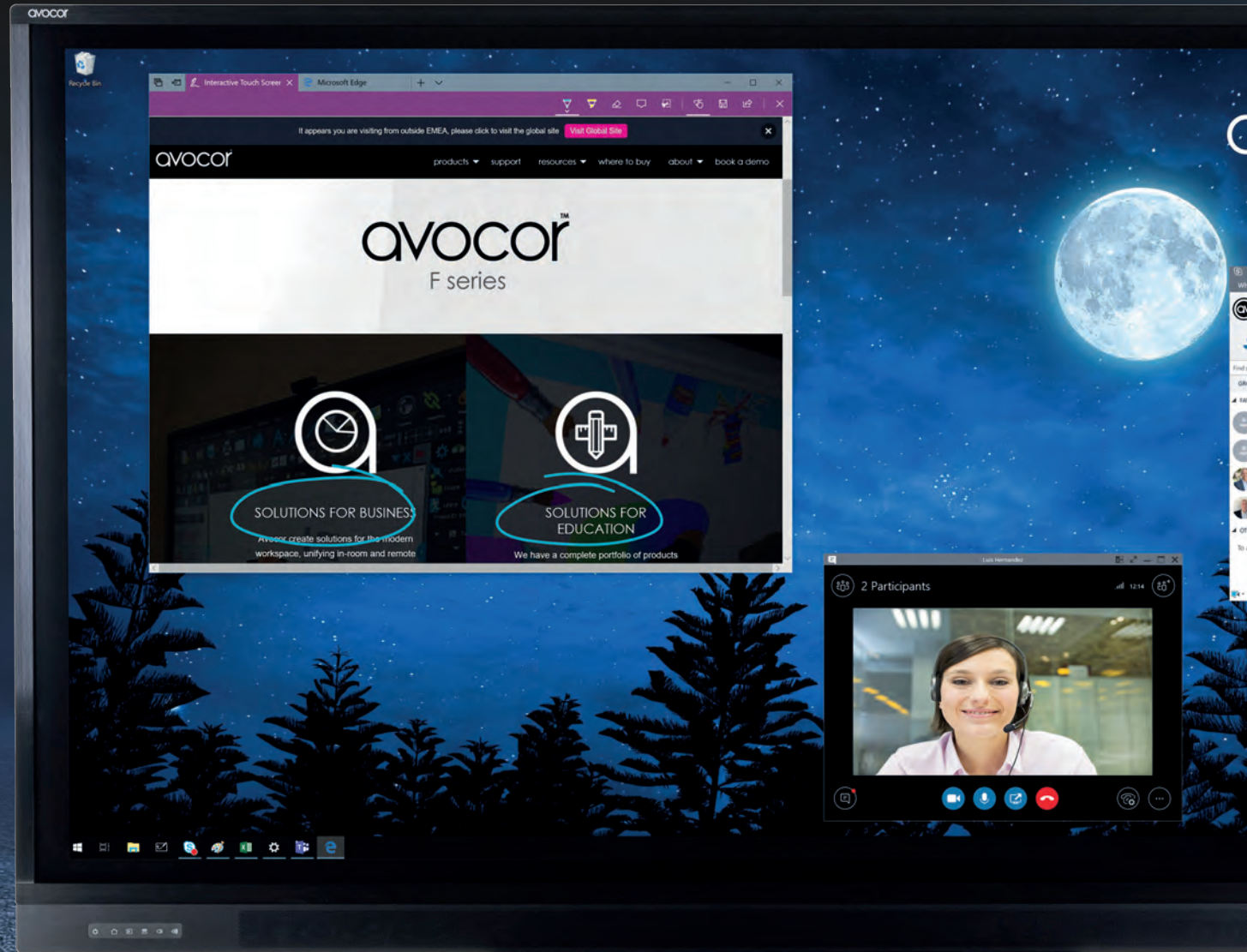
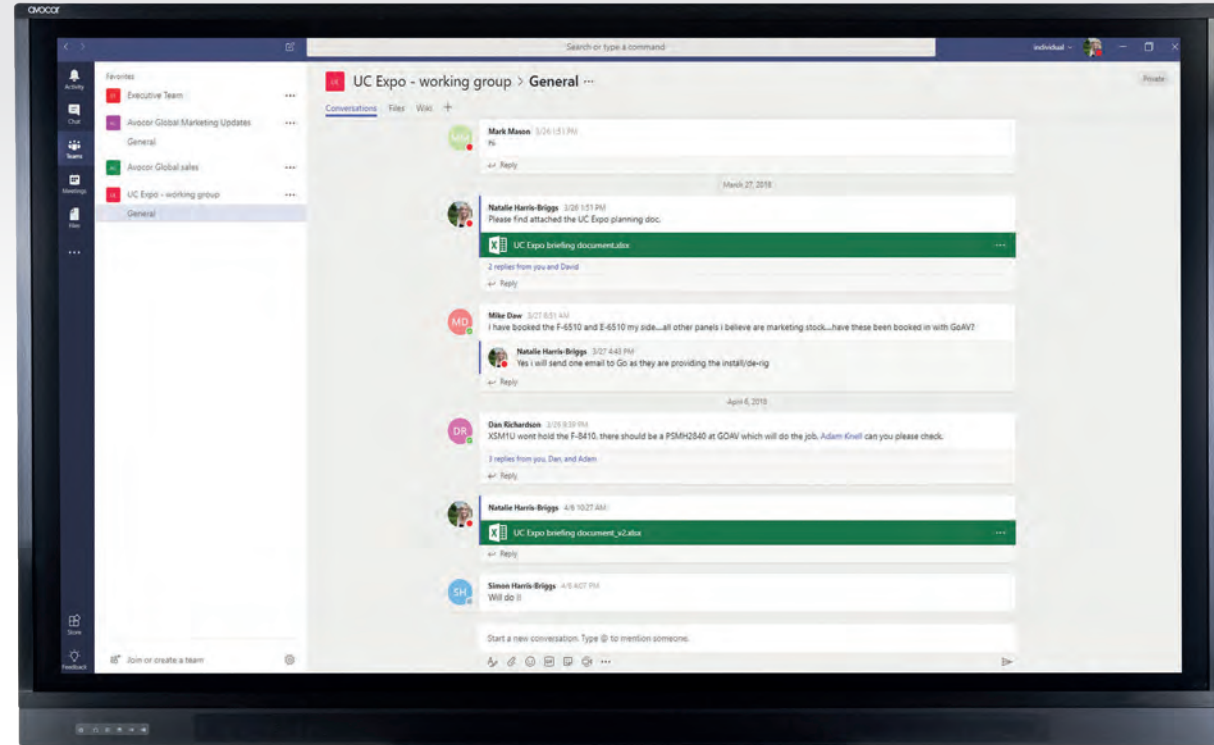


avocor™

F50 series



Experience the very latest collaborative, interactive touchscreen technology



Innovative. Agnostic. Unique

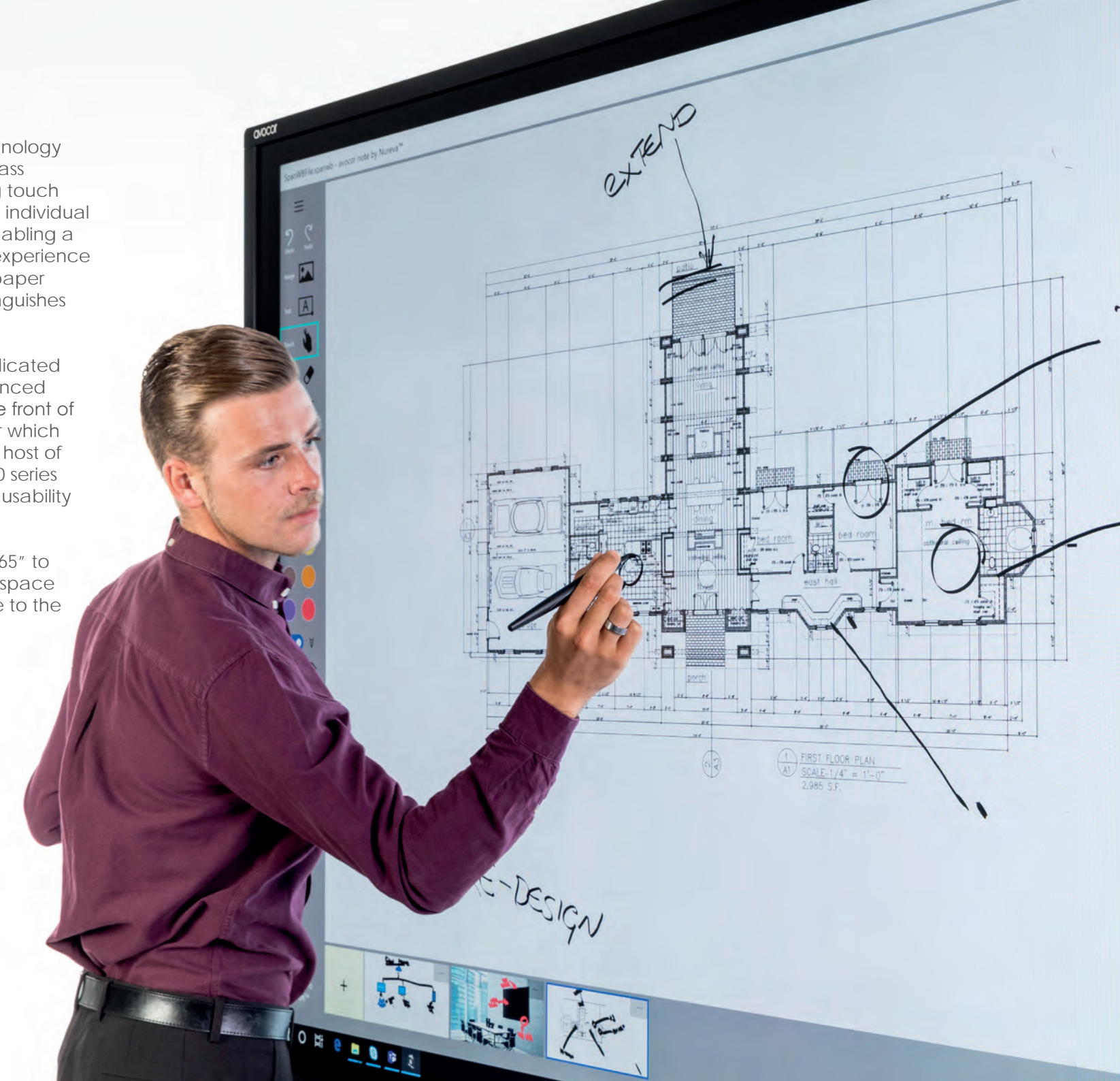
The F50 series of interactive displays represents the very latest in touchscreen innovation, delivering a superior touch and whiteboarding experience that is pixel perfect, housed in a beautifully sleek, lightweight frame.

Perfect for corporate environments, the Avocor F50 series is truly agnostic, working seamlessly with Unified Communications hardware and software, from Zoom Rooms to Skype for Business, Logitech to Huddly cameras, meaning the F50 integrates with existing equipment as well as potential, future technology upgrades.

Utilizing the very latest InGlass™ technology combined with optically bonded glass and includes a new, ultra-fast inking touch performance that supports up to 20 individual touch points and 4 passive pens, enabling a high performance, realistic writing experience that is as natural as putting pen to paper while object recognition easily distinguishes between pen, finger and palm.

With useful features such as the dedicated wireless sharing button on the Advanced Connect and Control toolbar on the front of the display, an integrated soundbar which includes a microphone array and a host of connectivity options, the Avocor F50 series delivers the ultimate experience for usability and collaboration.

With 3 sizes available, ranging from 65" to 86", there is a display for every workspace environment from the huddle space to the executive meeting room.





Collaborate effortlessly with ultra-fast, 20-point of touch

Using latest generation, InGlass™ touch technology from FlatFrog, the F50 delivers a highly superior writing experience that is incredibly fast yet accurate and supports up to 4 passive pens and 20 points of simultaneous, collaborative touch.



Enjoy cutting-edge, optically bonded glass

The Avocor F50 series has no parallax gap between the glass and the display, delivering incredible clarity and viewability combined with a highly durable display that is protected from dust, dirt and moisture.



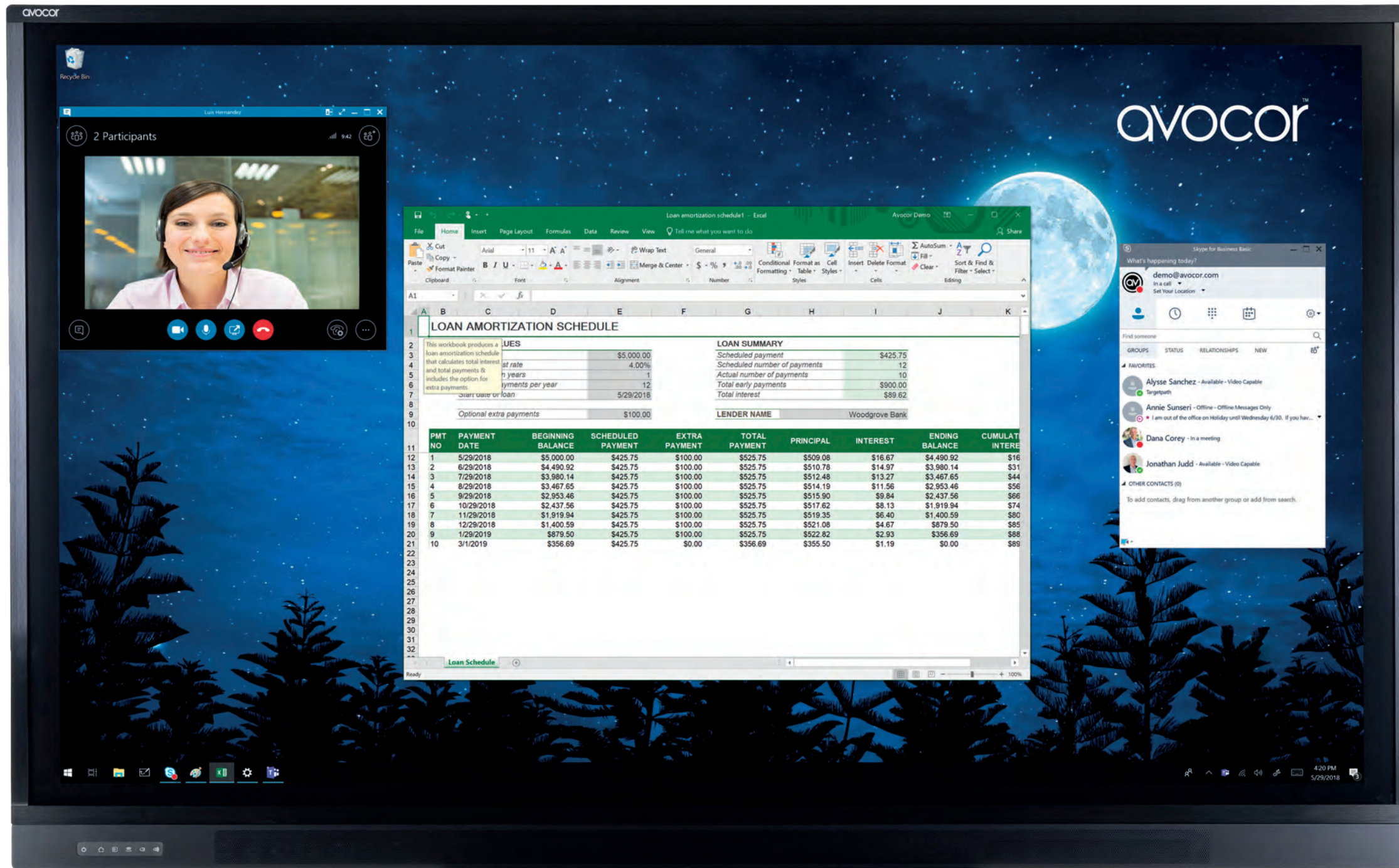
Experience crystal clear images on a 4K display

Enjoy stunning content with increased brightness and contrast on the ultra-HD display of the Avocor F50, producing incredible visuals that engage the audience. Built with the very latest LCD technology, the display range is ultra-lightweight and thin as well as extremely energy efficient.



Integrated audio conferencing capability

The F50 includes a high-performing, front-facing soundbar module, delivering a superior audio experience as well as an active microphone array with 4 x microphones enables users to connect with 3rd party UC based software to create an immersive audio environment.



Enhance group collaboration with pen aware functionality

The fine-tip pen stylus delivers extremely accurate writing and annotations on the display while object recognition smoothly transitions between pen, finger and palm to create a fluid, collaborative environment for users.



Share content easily

The Advanced Connect and Control toolbar at the front of the display features a Wireless Sharing button, enabling users to switch seamlessly to the dedicated HDMI input for 3rd party devices.



Optimized for Windows 10

The F50 includes a built-in Windows swipe bar which has been optimized for Windows 10, delivering a tablet-like experience on a large format display.



Multiple connectivity options

Included with the Avocor F50 is a wide range of connectivity options including 4 x HDMI 2.0, HDMI Out and RS-232 for room control.



AVF-6550

DISPLAY		DISPLAY	
Diagonal Size (Inch)	65	75	
Backlight	Direct-lit LED	Direct-lit LED	
Aspect Ratio	16:9	16:9	
Resolution	4K, 3840 x 2160 @ 60Hz	4K, 3840 x 2160 @ 60Hz	
Response Time	8 ms	8 ms	
Brightness	370 (cd/m2)	370 (cd/m2)	
Contrast Ratio	4000:1	4000:1	
Viewing Angle	178° / 178°	178° / 178°	
Supported Colours	30-bit Deep Colour	30-bit Deep Colour	
Display Orientation	Landscape	Landscape	
TOUCH SYSTEM		TOUCH SYSTEM	
Interface	3 x USB-B 2.0, 1 x USB-B 3.0	3 x USB-B 2.0, 1 x USB-B 3.0	
Touch	Up to 20 Point Avocor InGlass™ Intelligent Touch	Up to 20 Point Avocor InGlass™ Intelligent Touch	
Glass	2mm Optically Bonded, Anti-Glare, Anti-Fingerprint Glass	2mm Optically Bonded, Anti-Glare, Anti-Fingerprint Glass	
Supported Operating System	Windows 7 / 8 / 10; Mac OSX*; Linux*	Windows 7 / 8 / 10; Mac OSX*; Linux*	
AUDIO		AUDIO	
Built-in Speakers	4Ω / 2 x 15W Forward Facing - 4 x 32mm Drivers - 2 Passive	4Ω / 2 x 15W Forward Facing - 4 x 32mm Drivers - 2 Passive	
Microphone array	Yes - 4 x microphones	Yes - 4 x microphones	
CONNECTIVITY		CONNECTIVITY	
Standard IO	3 x HDMI 2.0, 1 x HDMI 2.0 for Dedicated Wireless Sharing Device, 1 x DisplayPort 1.2a, 1 x VGA, 2 x USB-A Hub 2.0, 1 x USB-A OPS 3.0, 1 x HDMI Out	3 x HDMI 2.0, 1 x HDMI 2.0 for Dedicated Wireless Sharing Device, 1 x DisplayPort 1.2a, 1 x VGA, 2 x USB-A Hub 2.0, 1 x USB-A OPS 3.0, 1 x HDMI Out	
Guest IO	1 x HDMI 2.0, 1 x USB-B Touch, 1 x USB-A 3.0, 1 x USB-A OPS 3.0	1 x HDMI 2.0, 1 x USB-B Touch, 1 x USB-A 3.0, 1 x USB-A OPS 3.0	
Audio	1 x 3.5mm Audio Out, 1 x 3.5mm Audio In, 1 x Optical (SPDIF)	1 x 3.5mm Audio Out, 1 x 3.5mm Audio In, 1 x Optical (SPDIF)	
Control	1 x RS-232, 1 x LAN In Ethernet (RJ-45)	1 x RS-232, 1 x LAN In Ethernet (RJ-45)	
PHYSICAL SPECIFICATIONS		PHYSICAL SPECIFICATIONS	
Product Dimensions	1568 x 991.1 x 95.5mm 61.7 x 39 x 3.75 inches	1791.8 x 1114.9 x 103.1 mm 70.5 x 43.8 x 4.05 inches	
Shipping Dimensions	1672 x 1156 x 259mm 65.8 x 45.5 x 10.1 inches	2092 x 1319 x 286 mm 82.3 x 51.9 x 11.2 inches	
Weight	Net: 50 kg 110.2 lbs / Gross: 61 kg 134.4lbs	Net: 61 kg 134.4 lbs / Gross: 76.2 kg 167.9 lbs	
Wall Mount (VESA)	600 mm x 400 mm 23.6 x 15.7 inches	800 mm x 400 mm 31.49 x 15.49 inches	
IPC Mount	75 mm x 75 mm 2.95 x 2.95 inches	75 mm x 75 mm 2.95 x 2.95 inches	
IPC Mount	100 mm x 100 mm 3.93 x 3.93 inches	100 mm x 100 mm 3.93 x 3.93 inches	
OPS Slot	Yes, 3840 x 2160 @ 60Hz	Yes, 3840 x 2160 @ 60Hz	
Handles	4	4	
OSD & REMOTE CONTROL FUNCTIONS		OSD & REMOTE CONTROL FUNCTIONS	
Source Auto Detect Function	Yes	Yes	
Freeze frame	Yes	Yes	
Blank Out	Yes	Yes	
Light Settings	5 x Low / Low-Mid / Standard / Mid-High / Highest	5 x Low / Low-Mid / Standard / Mid-High / Highest	
POWER		POWER	
Power Supply	AC100-240V (Worldwide), 50/60Hz	AC100 - 240V (Worldwide), 50/60Hz	
Maximum Power Consumption	<220 W	<300W	
Standby	≤0.5 W	≤0.5 W	
ENVIRONMENTAL		ENVIRONMENTAL	
Operating Temperature	0°C ~ 40°C	0°C ~ 40°C	
Storage Temperature	-20°C ~ 60°C	-20°C ~ 60°C	
Humidity	20% ~ 80%	20% ~ 80%	
WHAT COMES IN THE BOX		WHAT COMES IN THE BOX	
Remote control & batteries x 1, Fine-tip passive touch stylus x 2, AC power cord - UK x 1 - EU x 1 - US x 1, USB cable (3m 9.84 ft) x1, HDMI cable (3m 9.84 ft) x 1, Quick Start Guide x 1, USB Drive - MAC Touch Drivers.		Remote control & batteries x 1, Fine-tip passive touch stylus x 2, AC power cord - UK x 1 - EU x 1 - US x 1, USB cable (3m 9.84 ft) x1, HDMI cable (3m 9.84 ft) x 1, Quick Start Guide x 1, USB Drive - MAC Touch Drivers.	
WARRANTY		WARRANTY	
UK & Northern Ireland: 3 year RTB warranty as standard with a 5 year on-site upgrade option available, USA warranty: 3 year advanced replacement warranty as standard with a 4 or 5 year upgrade option available, EMEA & Republic of Ireland: 5 year RTB warranty as standard.		UK & Northern Ireland: 3 year RTB warranty as standard with a 5 year on-site upgrade option available, USA warranty: 3 year advanced replacement warranty as standard with a 4 or 5 year upgrade option available, EMEA & Republic of Ireland: 5 year RTB warranty as standard.	

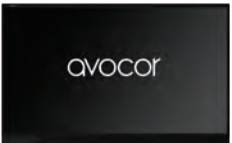
Details are subject to change without notice. All other logos and trademarks acknowledged. E&OE. *Please note up to 20-point touch in PC mode with Windows 7/8/10, Mac OSX and Linux only supports single touch. ** Available for EMEA purchases only



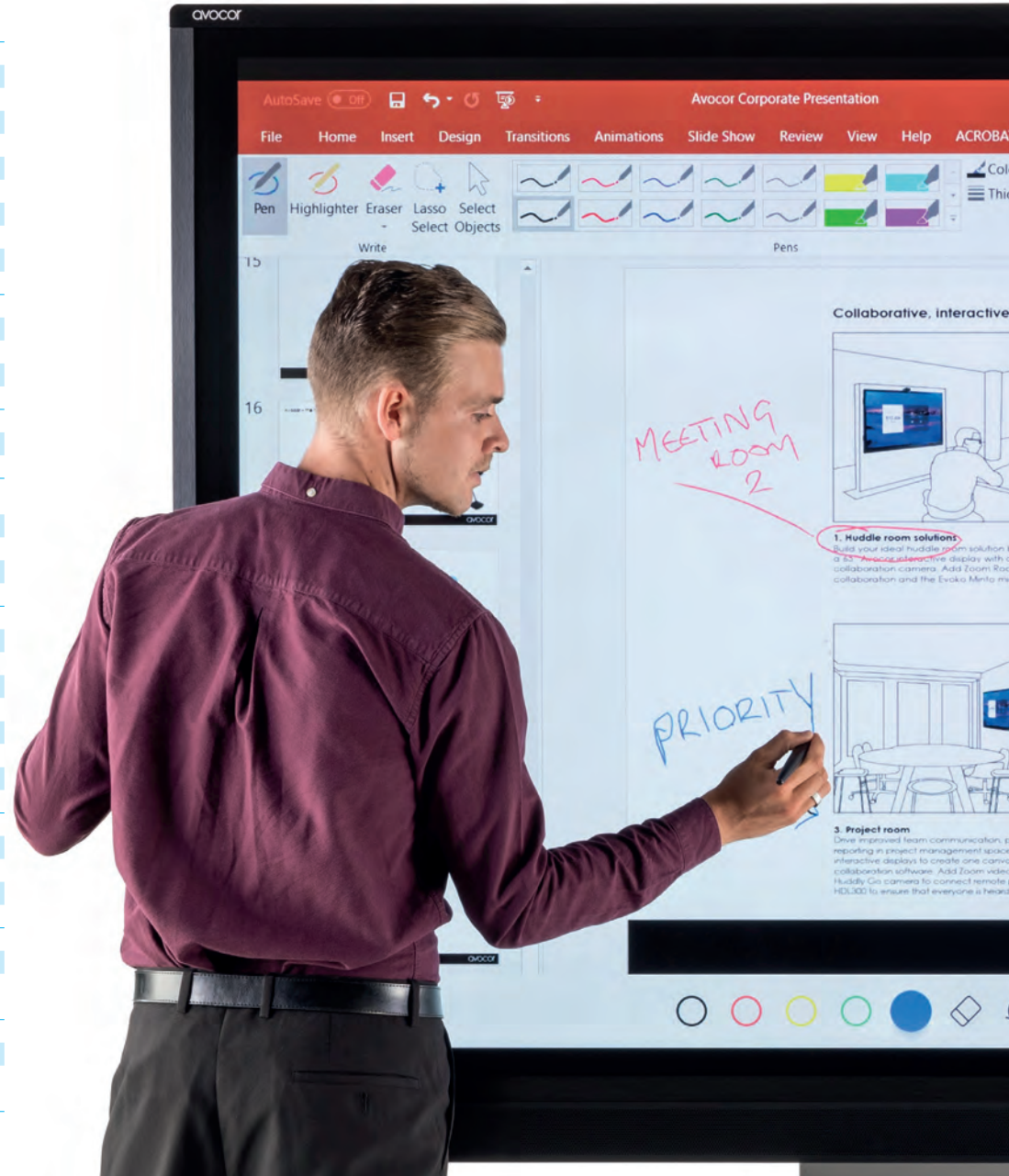
AVF-7550

DISPLAY		DISPLAY	
Diagonal Size (Inch)	86	86	
Backlight	Direct-lit LED	Direct-lit LED	
Aspect Ratio	16:9	16:9	
Resolution	4K, 3840 x 2160 @ 60Hz	4K, 3840 x 2160 @ 60Hz	
Response Time	8 ms	8 ms	
Brightness	370 (cd/m2)	370 (cd/m2)	
Contrast Ratio	4000:1	4000:1	
Viewing Angle	178° / 178°	178° / 178°	
Supported Colours	30-bit Deep Colour	30-bit Deep Colour	
Display Orientation	Landscape	Landscape	
TOUCH SYSTEM		TOUCH SYSTEM	
Interface	3 x USB-B 2.0, 1 x USB-B 3.0	3 x USB-B 2.0, 1 x USB-B 3.0	
Touch	Up to 20 Point Avocor InGlass™ Intelligent Touch	Up to 20 Point Avocor InGlass™ Intelligent Touch	
Glass	2mm Optically Bonded, Anti-Glare, Anti-Fingerprint Glass	2mm Optically Bonded, Anti-Glare, Anti-Fingerprint Glass	
Supported Operating System	Windows 7 / 8 / 10; Mac OSX*; Linux*	Windows 7 / 8 / 10; Mac OSX*; Linux*	
AUDIO		AUDIO	
Built-in Speakers	4Ω / 2 x 15W Forward Facing - 4 x 32mm Drivers - 2 Passive	4Ω / 2 x 15W Forward Facing - 4 x 32mm Drivers - 2 Passive	
Microphone array	Yes - 4 x microphones	Yes - 4 x microphones	
CONNECTIVITY		CONNECTIVITY	
Standard IO	3 x HDMI 2.0, 1 x HDMI 2.0 for Dedicated Wireless Sharing Device, 1 x DisplayPort 1.2a, 1 x VGA, 2 x USB-A Hub 2.0, 1 x USB-A OPS 3.0, 1 x HDMI Out	3 x HDMI 2.0, 1 x HDMI 2.0 for Dedicated Wireless Sharing Device, 1 x DisplayPort 1.2a, 1 x VGA, 2 x USB-A Hub 2.0, 1 x USB-A OPS 3.0, 1 x HDMI Out	
Guest IO	1 x HDMI 2.0, 1 x USB-B Touch, 1 x USB-A 3.0, 1 x USB-A OPS 3.0	1 x HDMI 2.0, 1 x USB-B Touch, 1 x USB-A 3.0, 1 x USB-A OPS 3.0	
Audio	1 x 3.5mm Audio Out, 1 x 3.5mm Audio In, 1 x Optical (SPDIF)	1 x 3.5mm Audio Out, 1 x 3.5mm Audio In, 1 x Optical (SPDIF)	
Control	1 x RS-232, 1 x LAN In Ethernet (RJ-45)	1 x RS-232, 1 x LAN In Ethernet (RJ-45)	
PHYSICAL SPECIFICATIONS		PHYSICAL SPECIFICATIONS	
Product Dimensions	2038 x 1246.9 x 102.8 mm 80.23 x 49 x 4.04 inches	2038 x 1246.9 x 102.8 mm 80.23 x 49 x 4.04 inches	
Shipping Dimensions	2160 x 1435 x 286 mm 85.03 x 56.69 x 11.25 inches	2160 x 1435 x 286 mm 85.03 x 56.69 x 11.25 inches	
Weight	Net: 73.5 kg 162.05 lbs / Gross: 88 kg 194 lbs	Net: 73.5 kg 162.05 lbs / Gross: 88 kg 194 lbs	
Wall Mount (VESA)	800 mm x 400 mm 31.49 x 15.49 inches	800 mm x 400 mm 31.49 x 15.49 inches	
IPC Mount	75 mm x 75 mm 2.95 x 2.95 inches	75 mm x 75 mm 2.95 x 2.95 inches	
IPC Mount	100 mm x 100 mm 3.93 x 3.93 inches	100 mm x 100 mm 3.93 x 3.93 inches	
OPS Slot	Yes, 3840 x 2160 @ 60Hz	Yes, 3840 x 2160 @ 60Hz	
Handles	4	4	
OSD & REMOTE CONTROL FUNCTIONS		OSD & REMOTE CONTROL FUNCTIONS	
Source Auto Detect Function	Yes	Yes	
Freeze frame	Yes	Yes	
Blank Out	Yes	Yes	
Light Settings	5 x Low / Low-Mid / Standard / Mid-High / Highest	5 x Low / Low-Mid / Standard / Mid-High / Highest	
POWER		POWER	
Power Supply	AC100-240V (Worldwide), 50/60Hz	AC100-240V (Worldwide), 50/60Hz	
Maximum Power Consumption	<450W	<450W	
Standby	≤0.5 W	≤0.5 W	
ENVIRONMENTAL		ENVIRONMENTAL	
Operating Temperature	0°C ~ 40°C	0°C ~ 40°C	
Storage Temperature	-20°C ~ 60°C	-20°C ~ 60°C	
Humidity	20% ~ 80%	20% ~ 80%	
WHAT COMES IN THE BOX		WHAT COMES IN THE BOX	
Remote control & batteries x 1, Fine-tip passive touch stylus x 2, AC power cord - UK x 1 - EU x 1 - US x 1, USB cable (3m 9.84 ft) x1, HDMI cable (3m 9.84 ft) x 1, Quick Start Guide x 1, USB Drive - MAC Touch Drivers.		Remote control & batteries x 1, Fine-tip passive touch stylus x 2, AC power cord - UK x 1 - EU x 1 - US x 1, USB cable (3m 9.84 ft) x1, HDMI cable (3m 9.84 ft) x 1, Quick Start Guide x 1, USB Drive - MAC Touch Drivers.	
WARRANTY		WARRANTY	
UK & Northern Ireland: 3 year RTB warranty as standard with a 5 year on-site upgrade option available, USA warranty: 3 year advanced replacement warranty as standard with a 4 or 5 year upgrade option available, EMEA & Republic of Ireland: 5 year RTB warranty as standard.		UK & Northern Ireland: 3 year RTB warranty as standard with a 5 year on-site upgrade option available, USA warranty: 3 year advanced replacement warranty as standard with a 4 or 5 year upgrade option available, EMEA & Republic of Ireland: 5 year RTB warranty as standard.	

Details are subject to change without notice. All other logos and trademarks acknowledged. E&OE. *Please note up to 20-point touch in PC mode with Windows 7/8/10, Mac OSX and Linux only supports single touch. ** Available for EMEA purchases only



AVF-8650



avocor
www.avocor.com