

75"

# F50-SERIES F7550



### Ultra-fast 20-point touch

Using the latest generation touch technology from FlatFrog, the F50 series delivers a highly superior writing experience that is incredibly fast and accurate. The display responds quickly to user interaction with up to 4 passive pens or up to 20 points of simultaneous touch.



### 2mm Optically bonded glass

Built with cutting-edge, protective glass with no parallax gap between the glass and the display, providing users with a pixel perfect touch experience. Enjoy the latest in 4K LCD technology that contributes to a lighter, thinner display that is incredibly energy efficient, while the anti-glare and anti-fingerprint glass ensure that content is always clearly visible.



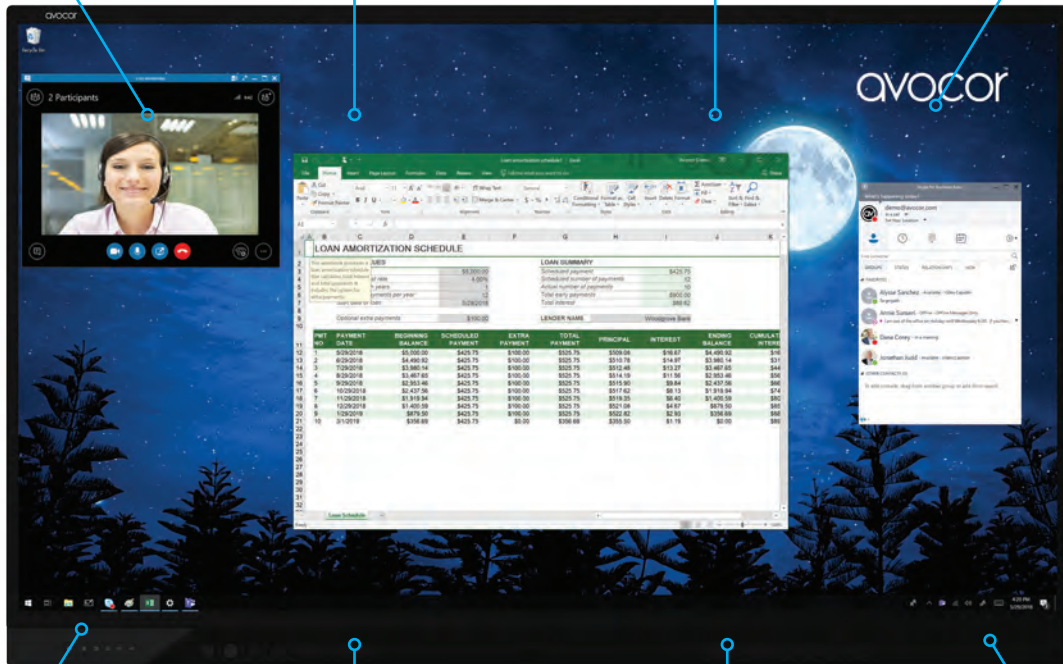
### Optimised for Windows 10

The F50 series comes with a built-in Windows swipe bar, optimised for Windows 10.



### Latest Intel OPS slot

The OPS slot supports HDMI 2.0 allowing for 4K content to be run at 60Hz, while the Intel OPS (Open Pluggable Specification) allows for a module PC to be added easily to the display without cables.



### Inductive key pad for control

Designed with ease of use in mind, the Advanced Connect and Control Bar features back-lit inductive key pads that complement the beautiful, sleek design of the F50 series.



### Wireless Screen Sharing

The control bar also features a Wireless Screen Sharing button, enabling users to switch seamlessly to the dedicated HDMI input for 3rd party devices.



### Integrated audio conferencing capability

A high-quality, front-facing soundbar module is included in the F50, ensuring that the display provides a crystal-clear audio experience, while the active microphone array allows the display to connect with a variety of Unified Communications based software, delivering the ultimate audio experience.



### Pen aware functionality

The fine-tip stylus delivers extremely accurate writing and annotations on the display, while object recognition means that the display can easily distinguish between pen, finger and palm, delivering a smooth touch experience.

## DISPLAY

Diagonal Size (Inch)	75
Backlight	Direct-lit LED
Aspect Ratio	16:9
Resolution	3840 x 2160 @ 60Hz
Response Time	8 ms
Brightness	370 (cd/m2)
Contrast Ratio	4000:1
Viewing Angle	178° / 178°
Supported Colours	30-bit Deep Colour
Display Orientation	Landscape

## TOUCH SYSTEM

Interface	3 x USB-B 2.0, 1 x USB-B 3.0
Touch	Up to 20 touch points of Avocor InGlass™ Intelligent touch   Supports 4 fine-tip pens
Glass	2mm optically bonded, anti-glare, anti-fingerprint glass
Supported Operating System	Windows 7 / 8 / 10; Mac OSX*; Linux*

## AUDIO

Built-in Speakers	4Ω   2 x 15W forward facing - Each module: 4 x 32mm Drivers, 2 Passive
Microphone Array	Yes - 4 microphones - 5m reach

## CONNECTIVITY

Standard IO	3 x HDMI 2.0, 1 x HDMI 2.0 for Dedicated Wireless Presentation Device, 1 x DisplayPort 1.2a, 1 x VGA 2 x USB-A Hub 3.0**, 1x USB-A OPS 3.0, 1x HDMI Out, 1x USB service port
Guest IO	1 x HDMI 2.0, 1 x USB-B Touch, 1 x USB-A 2.0 Hub, 1 x USB-A 2.0 OPS
Audio	1 x 3.5mm audio out, 1 x 3.5mm audio in, 1 x optical (SPDIF)
Control	1 x RS-232, 1 x LAN In Ethernet (RJ-45)

## PHYSICAL SPECIFICATIONS

Product Dimensions	1791.8 x 1114.9 x 103.1 mm   70.5 x 43.8 x 4.05 inches
Shipping Dimensions	2092 x 1319 x 286 mm   82.3 x 51.9 x 11.2 inches
Weight	Net: 60 kg   132.27 lbs / Gross: 73 kg   160.93 lbs
Wall Mount (VESA)	800 mm x 400 mm   31.49 x 15.49 inches
IPC Mount	75 x 75 mm   2.95 x 2.95 inches
IPC Mount	100 mm x 100 mm   3.93 x 3.93 inches
OPS Slot	Yes, 3840 x 2160 @ 60Hz
Handles	4

## OSD FUNCTIONS

Source Auto Detect Function	Yes
Image Settings	5 x User / Vivid / Cinema / Game / Sports

## POWER

Power Supply	AC100-240V (Worldwide), 50/60Hz
Maximum Power Consumption	<300 W
Standby	≤0.5 W

## ENVIRONMENTAL

Operating Temperature	0°C ~ 40°C
Storage Temperature	-20°C ~ 60°C
Humidity	20% ~ 85%

## SOFTWARE OPTIONS\*\*\*

Qwizdom OKTOPUS software & 5 x Qwizdom Notes+ licenses   Ximbus 3 year subscription
---

## WHAT COMES IN THE BOX

1 x Remote control & batteries, 2 x 3mm fine-tip passive touch pen, 1 x UK, 1 x EU, 1 x US power cord, 1 x USB cable (3m   118.1 inches), 1 x HDMI cable (3m   118.1 inches), 1 x Quick Start Guide
---

## WARRANTY

Terms and conditions vary via region, please visit <a href="http://www.avocor.com/faq/avocor-global-warranty">www.avocor.com/faq/avocor-global-warranty</a>
---

**avocor**  
www.avocor.com

Details are subject to change without notice. All other logos and trademarks acknowledged. E&OE. \*Please note up to 20-point touch in PC mode with Windows 7/8/10, Mac OSX and Linux only supports single touch. \*\*Touch input 1 only. \*\*\*Software options are included with every display purchase in EMEA only. +Preliminary specification, may be subject to change

Avocor\_datasheet\_F\_50\_7550\_EMEA\_06.11.19

