



HONEYWELL TRANSMISSION RISK AIR MONITOR

Quick Start Guide

01 MOBILE APP DOWNLOAD AND REGISTRATION

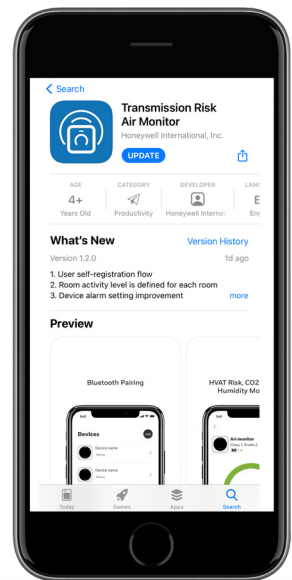
A Download App

Search for "Transmission Risk Air Monitor" on the Apple or Google Play store

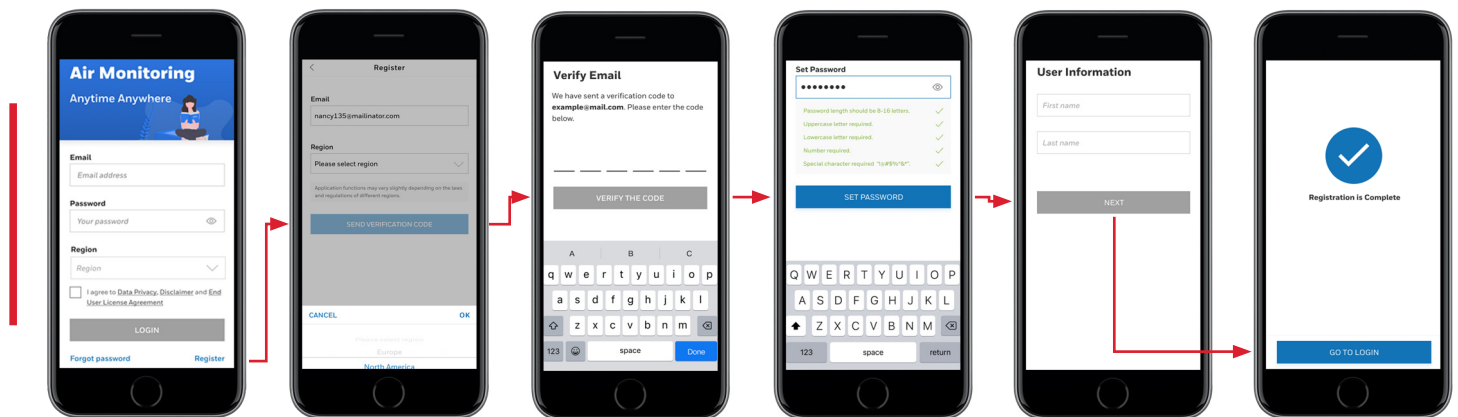


App name: Transmission Risk Air Monitor

Or scan the appropriate QR code below



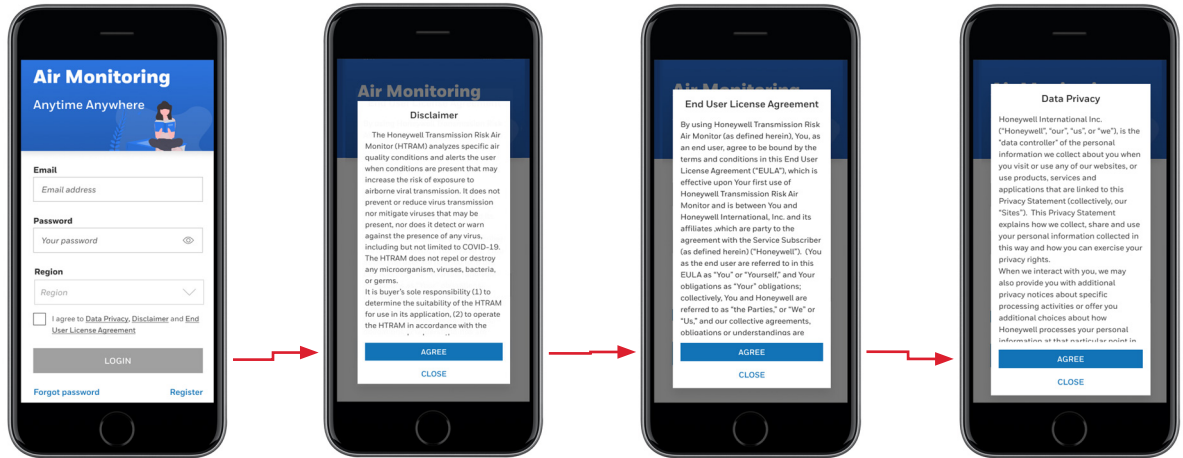
B Register



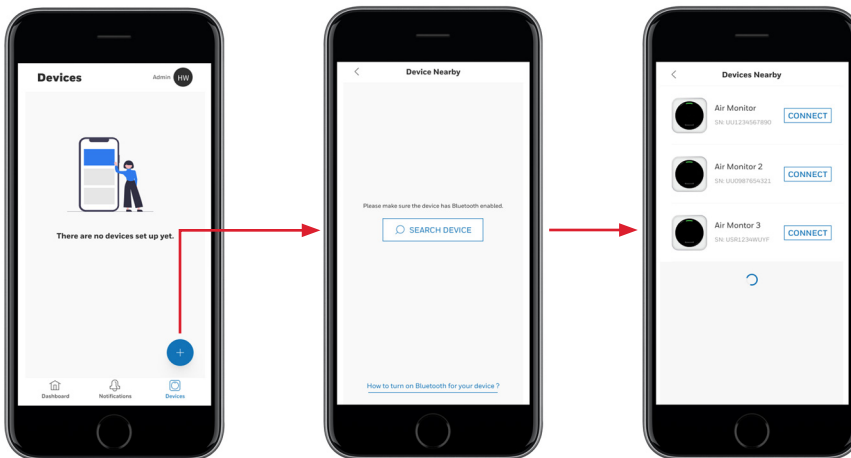
02 MOBILE APP LOGIN AND CONNECT DEVICE

For individual users with less than 10 devices

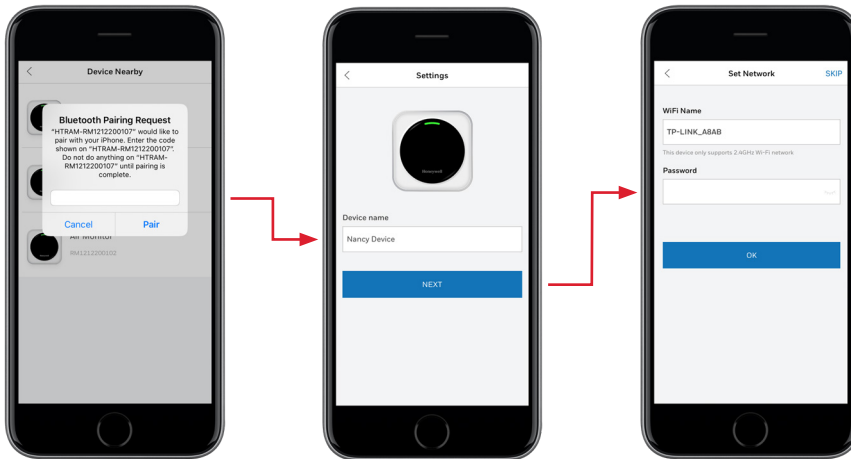
A Login



B Add Device



C Bluetooth® and WiFi Connection

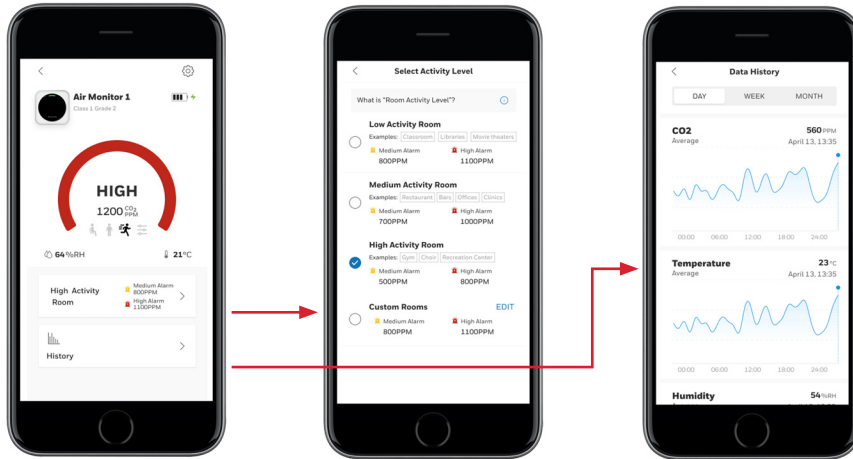


Input the PIN code displayed on the device screen

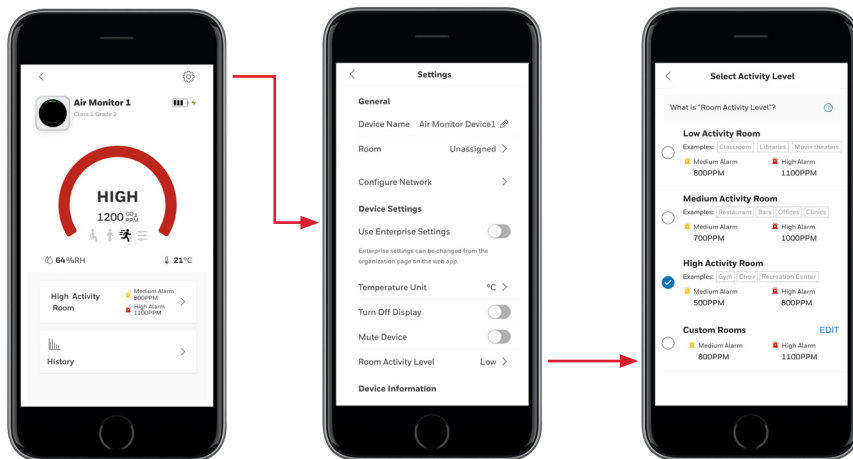
When connecting to enterprise WiFi networks, specific enterprise security requirements may apply.

03 MOBILE APP KEY FEATURES

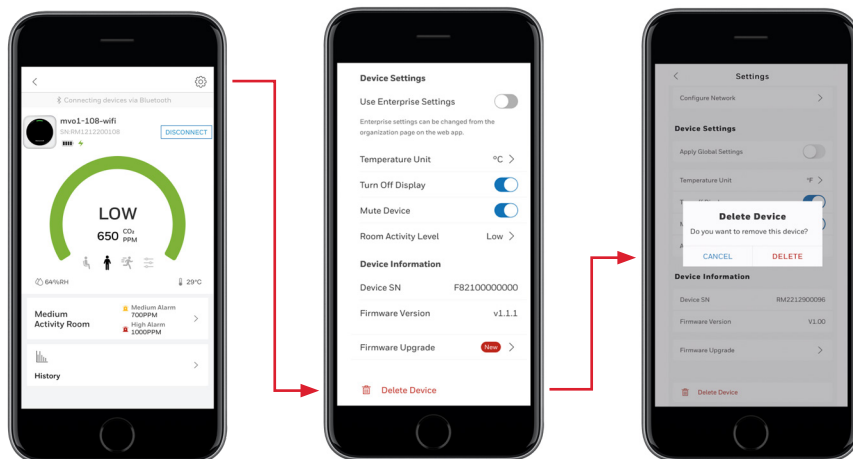
A Change Activity Setting and Check History



B Change Device Settings



C Delete Device



Once the device is deleted from the current account, other users will be able to pair and connect to this device.

For more information

sps.honeywell.com

Honeywell Gas Analysis and Safety

9680 Old Bailes Rd, Fort Mill, SC 29707
(803) 835-8000

Contact us

US:	Canada:
Tel. 800.430.5490	Tel. 888.212.7233
Fax. 800.322.1330	Fax. 888.667.8477

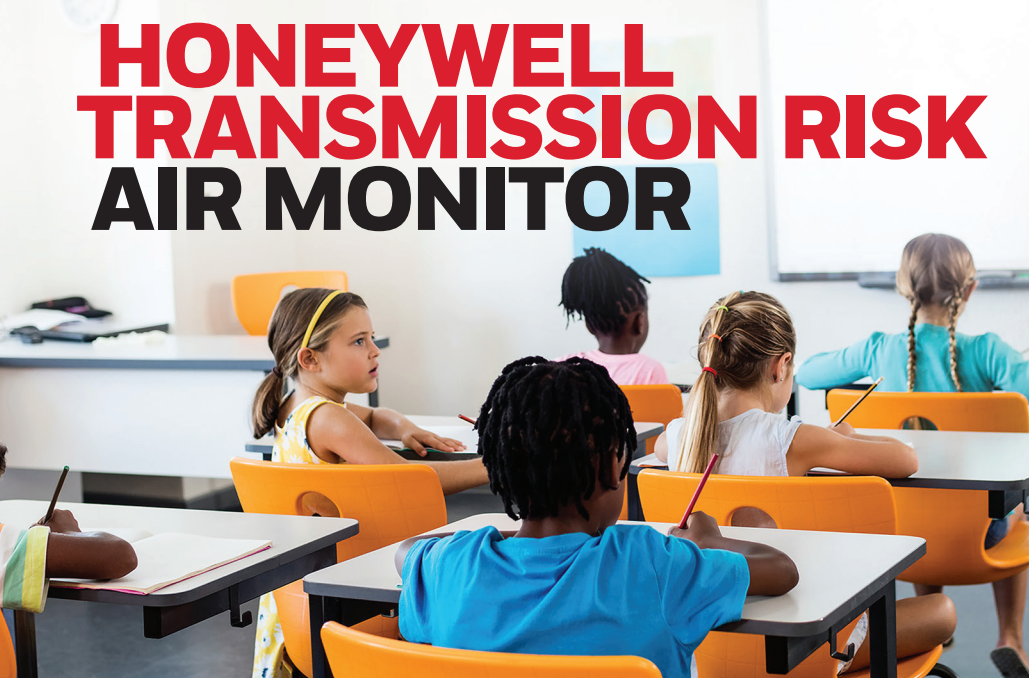
informationsp@honeywell.com

HGAS_HTRAM_Quick-Start-Guide_EN | Rev A | 12/21
© 2022 Honeywell International Inc.

**THE
FUTURE
IS
WHAT
WE
MAKE IT**

Honeywell

HONEYWELL TRANSMISSION RISK AIR MONITOR

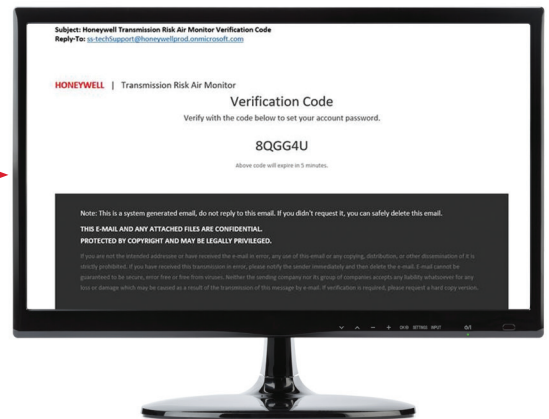
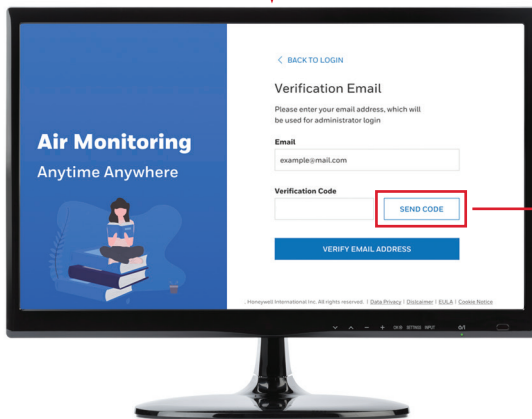
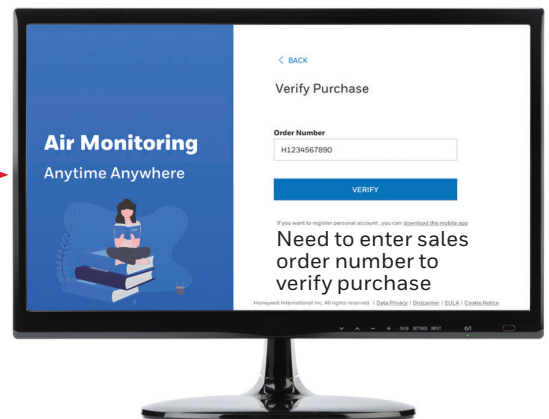


Enterprise Users Quick Start Guide

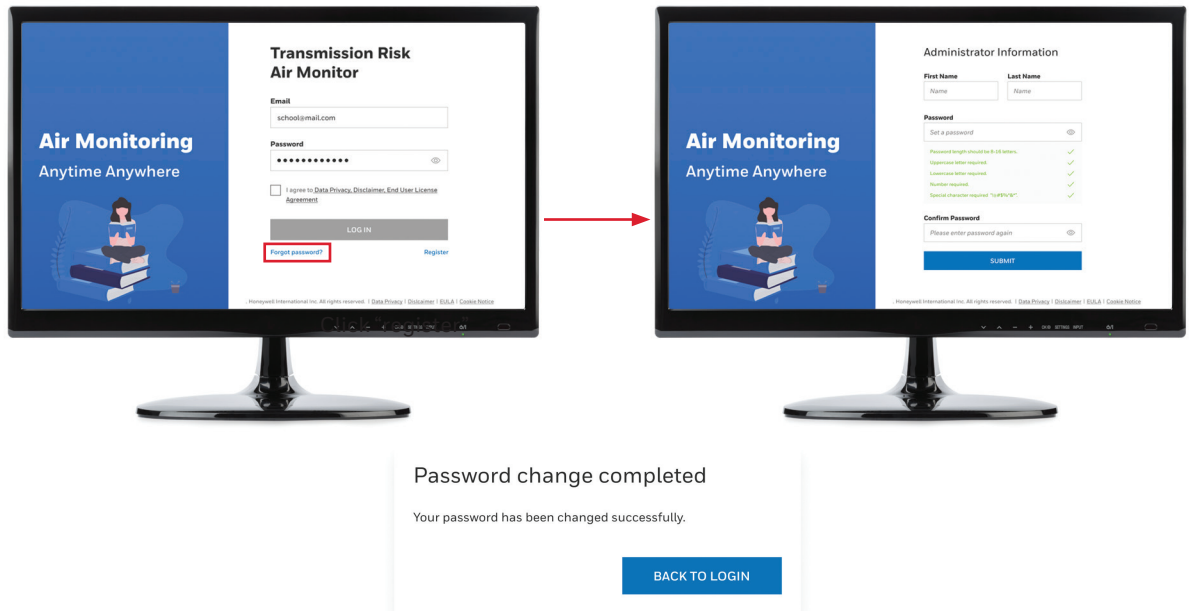
01 ENTERPRISE USER WEB PORTAL REGISTRATION

For enterprise users with more than 10 devices, multiple sites and complex authorization hierarchy.

A Registration



B Web Portal - Forgot Password

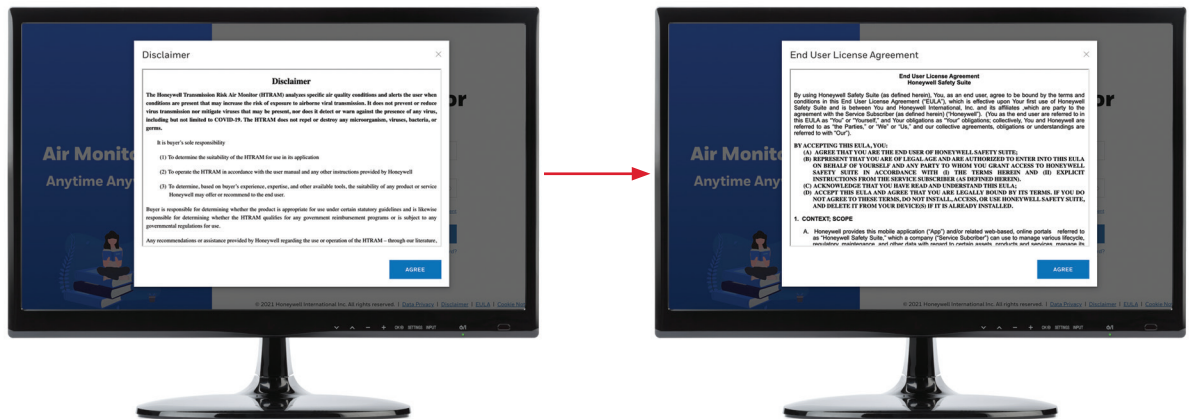


02 WEB PORTAL LOGIN, CREATE SITE/ORG AND ADD ROOM/DEVICE

A Web Portal - Login



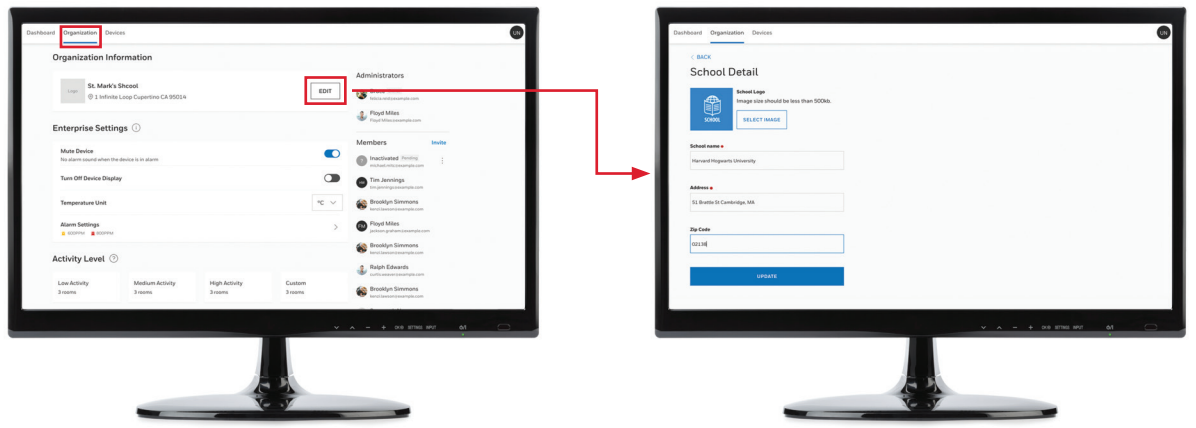
Login with correct credentials. Please note that LOGIN button is enabled only when the checkbox is checked.



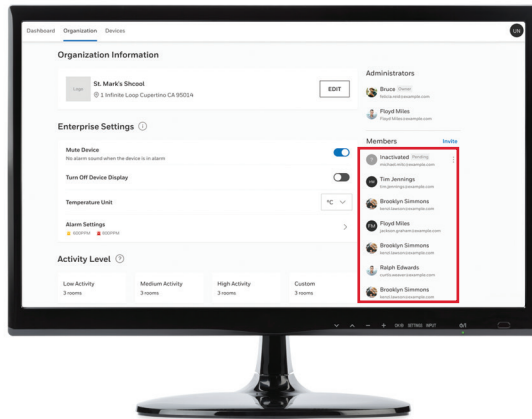
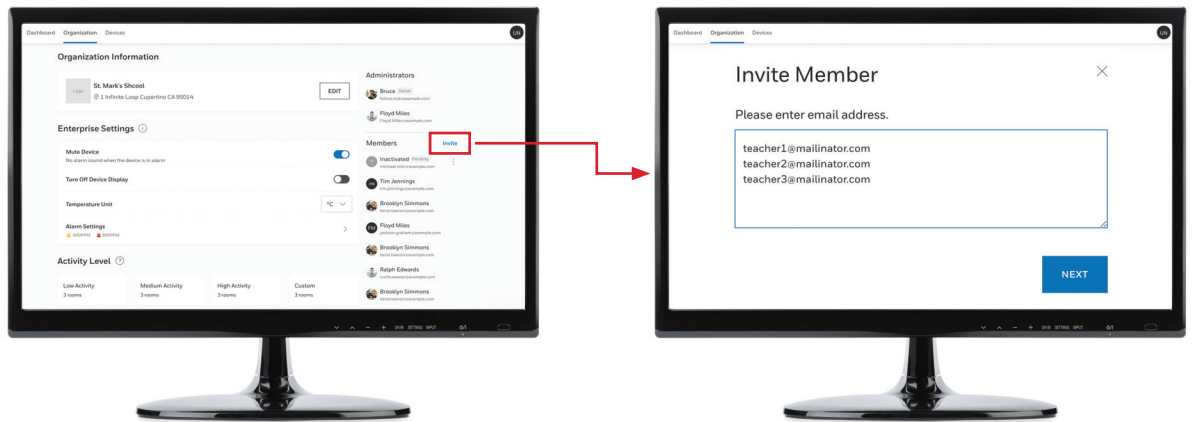
Accept EULA and Disclaimer (only on first-time login).

B Web Portal - Setup Site/Organization

Finish Site/Organization/School Setup

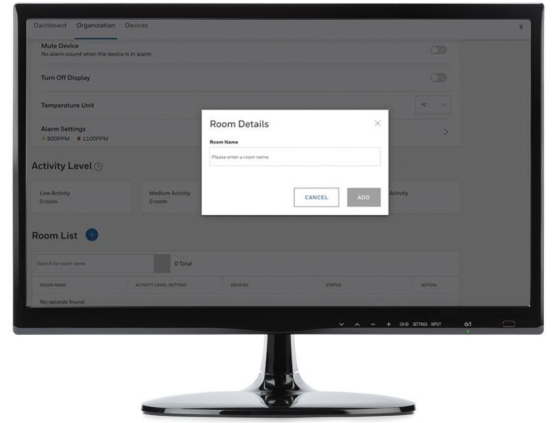
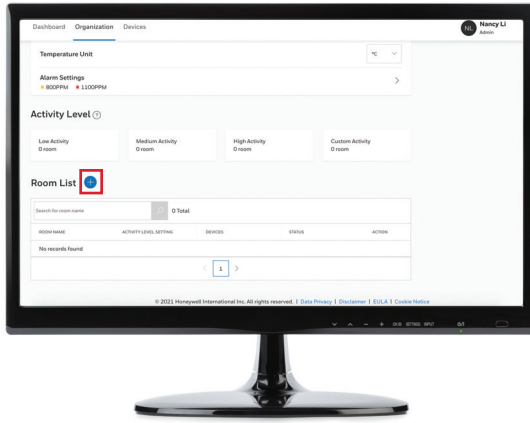


C Web Portal - Invite Members

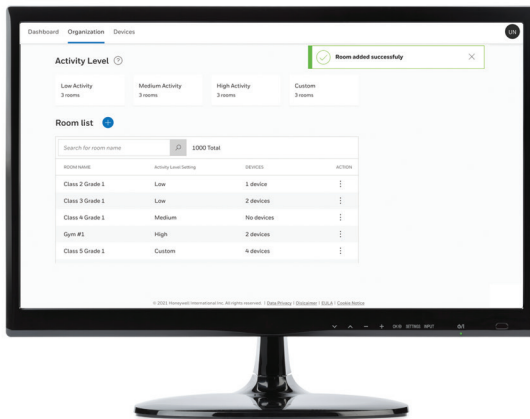


Note: Any member who did not activate his/her account will be shown as pending, and the admin user is able to resend the invitation mail to those pending members. Once the member account is activated, the resend option will be disabled.

D Web Portal - Add Rooms

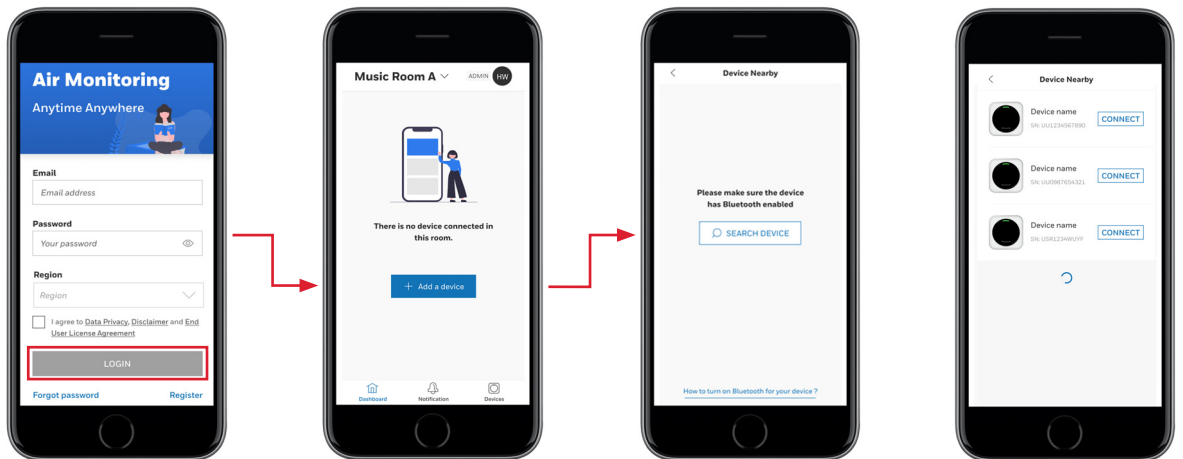


Note: Refer to the Activity level help (question mark icon) to decide which room activity is appropriate.



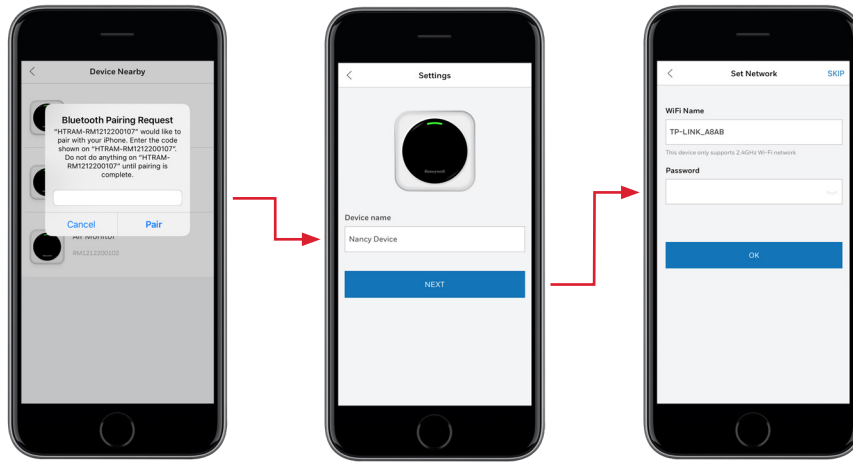
Note: Once room is created successfully, the toast message will display at the right top of the page and disappear after 3 seconds.

E Web Portal - Add Devices



Next, login to the Mobile App to Pair and Add Devices.

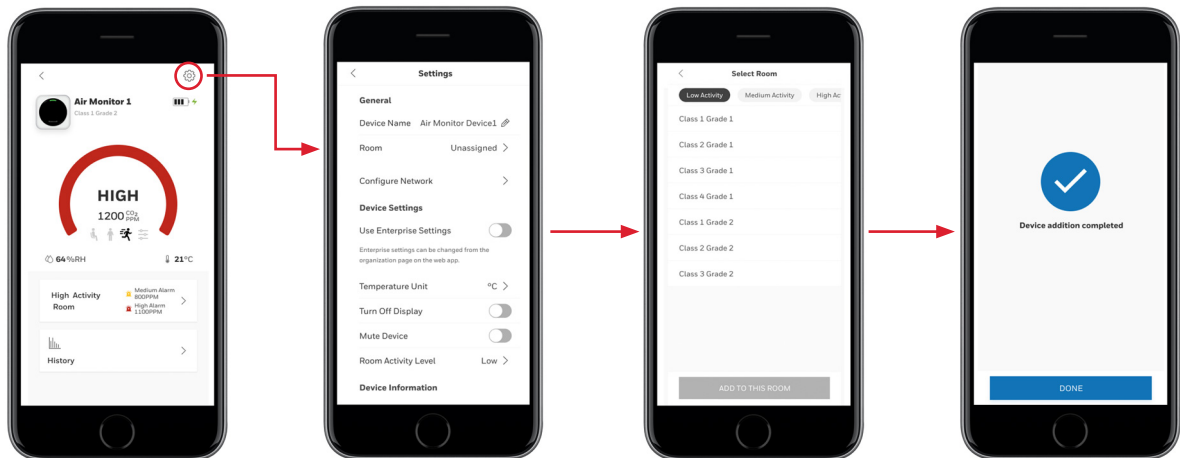
F Bluetooth® and WiFi Connection



Input the PIN code displayed on the device screen

When connecting to enterprise WiFi networks, specific enterprise security requirements may apply.

G Mobile App - Add Device to a Room

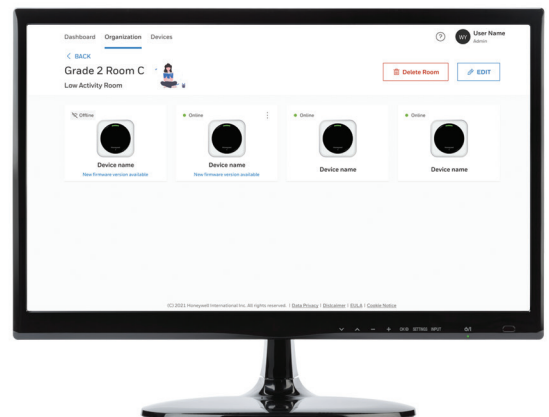


03 WEB PORTAL DASHBOARD, SITE-LEVEL ALARM SETTING & DEVICE SETTING

A Web Portal: Dashboard

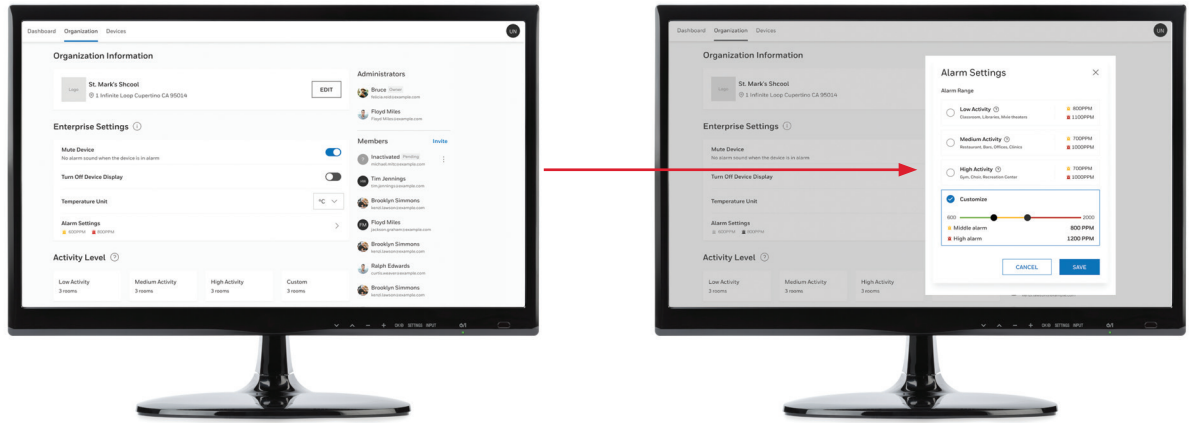


Note: Dashboard page will display all rooms by default.



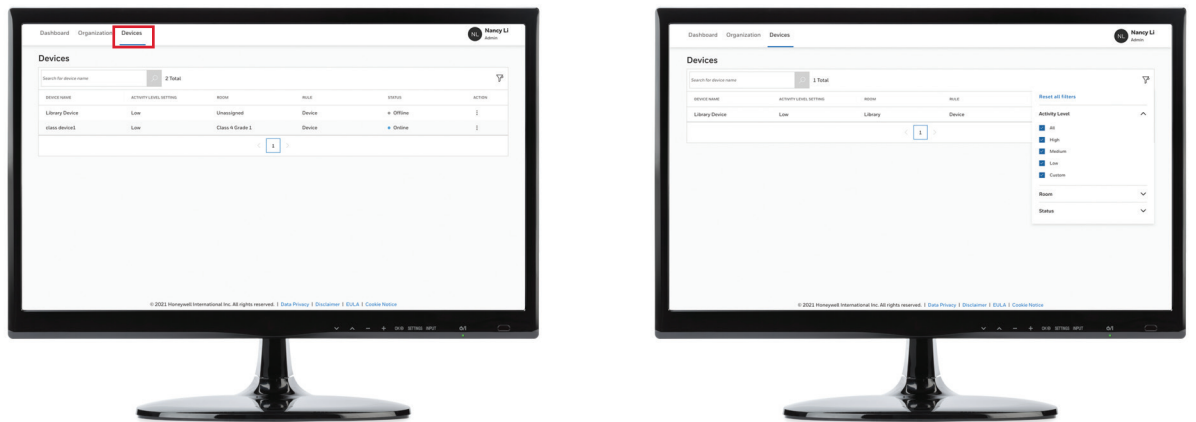
Note: By clicking into a room, the user can see all the devices within.

B
Web Portal:
Site Level
Alarm Setting

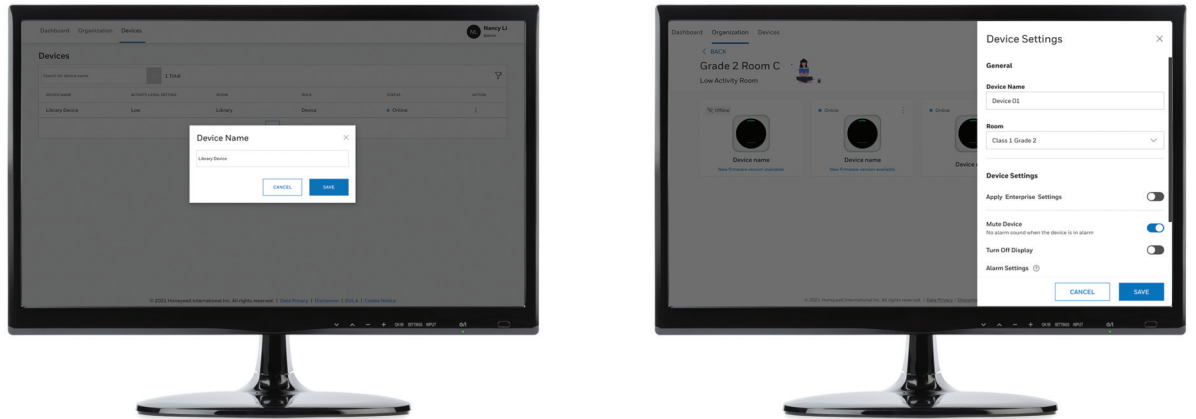


Note: When enabled, enterprise settings will change the settings on all devices.
 Enterprise settings can be enabled from the device settings screen.

C
Web Portal:
Device Setting

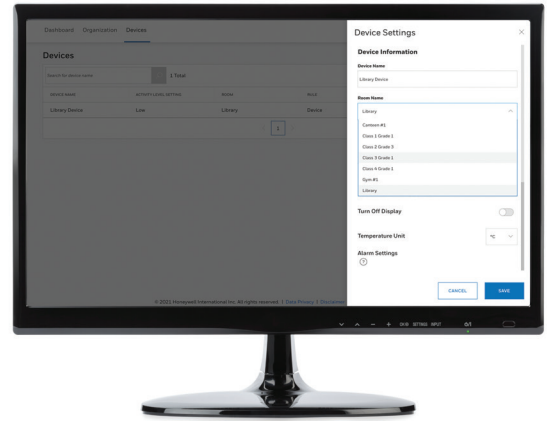
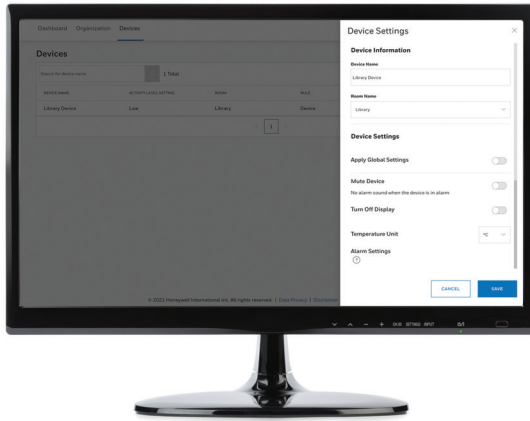


Note: A filter may be used to exclude or include the devices displayed. The user can filter the devices based on activity levels.



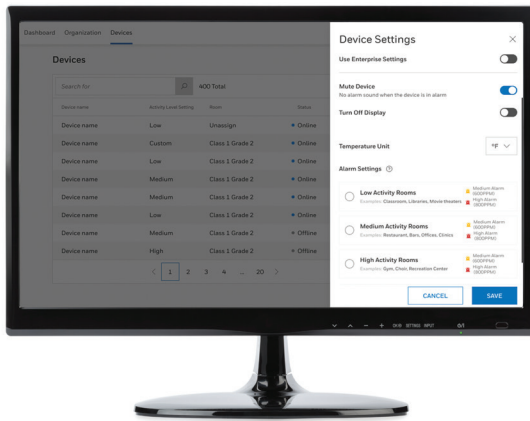
Note: The Admin user is allowed to change the following:
 device name, room for current device, and device settings.

C
Web Portal:
Device Setting

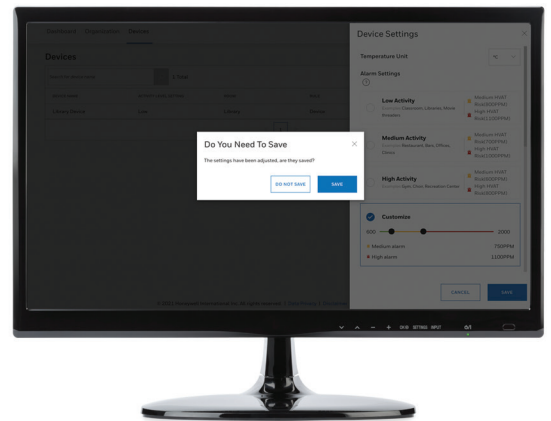
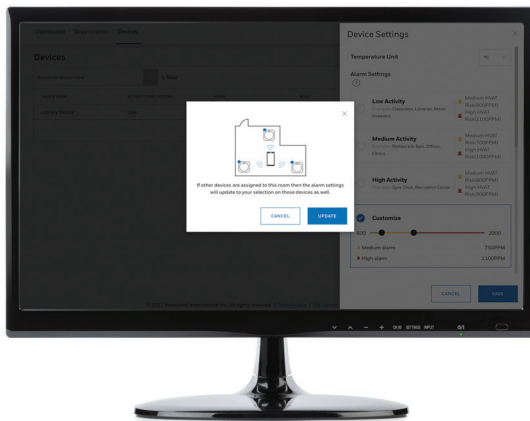


Note: The Admin user can make the same changes from the Device Settings screen.

Use Enterprise Settings



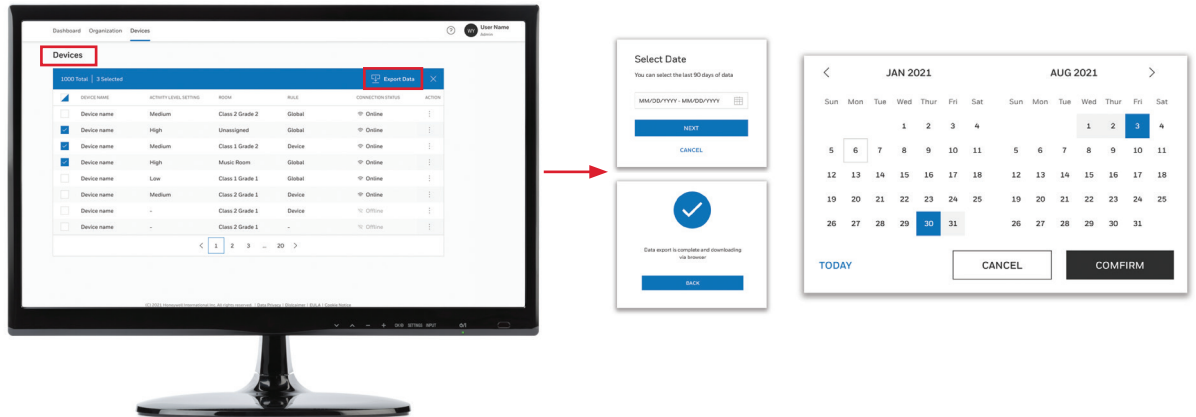
Note: If the current device is using the device local setting, user can apply enterprise settings by enabling the “Use Enterprise Settings” option. Any additional enrolled device to room will auto apply current room activity level.



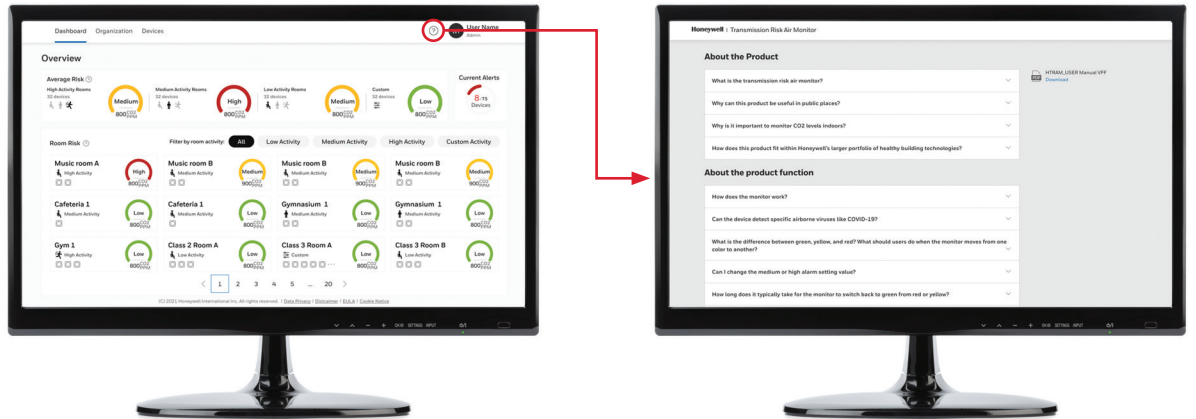
Note: An alarm setting change in any device will apply to all other devices in the same room.

04 WEB PORTAL DOWNLOAD HISTORICAL DATA AND OTHER FUNCTIONS

A Web Portal: Download Historical Data



B Web Portal: Help



Note: Clicking the question mark icon will open a new tab with FAQ and also offer a download of the latest user manual page.

For more information

sps.honeywell.com

Honeywell Gas Analysis and Safety

9680 Old Bailes Rd, Fort Mill, SC 29707

(803) 835-8000

Contact us

US:

Tel. 800.430.5490

Fax. 800.322.1330

informationsp@honeywell.com

Canada:

Tel. 888.212.7233

Fax. 888.667.8477

HGAS_HTRAM_Enterprise Users Quick-Start-Guide_EN | Rev A | 1/22
© 2022 Honeywell International Inc.

**THE
FUTURE
IS
WHAT
WE
MAKE IT**

Honeywell