



Recycle Disassemble Instruction (Dismantled Information)

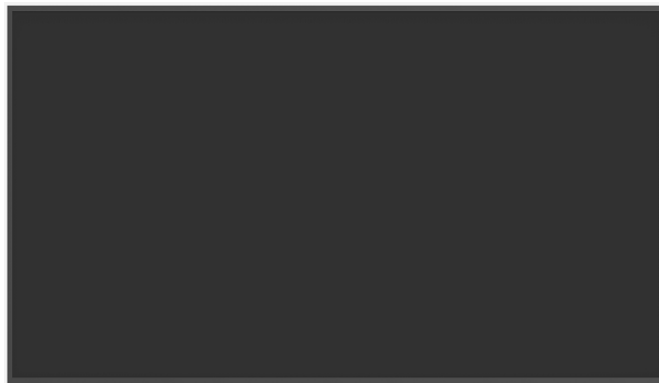
Requirements according to ANNEX VII of DIRECTIVE 2012/19/EU
on waste electrical and electronic equipment (WEEE)

Materials and components with hazardous content

LCDs may contain hazardous substances like Pb and BFRs which are covered by exemptions under the RoHS directive. However, the majority is present in the printed circuit boards assembly. In order to reduce emissions as much as possible, a complete disposal of the old appliance is required. This treatment may only be performed in authorized handling plants.








Product Name: LCD Monitor

Model No.: ST7502S





Disassembly Tools

Tool	picture
Philips Screwdriver for M3 screw	 A red-handled Philips screwdriver with a silver metal shaft and a black tip, lying horizontally on a light-colored wooden surface.
nosed pliers	 A pair of red-handled nose pliers with silver metal jaws, lying horizontally on a light-colored wooden surface.
Diagonal Cutting Pliers	 A pair of red-handled diagonal cutting pliers with silver metal jaws, lying horizontally on a light-colored wooden surface.
Slotted screwdriver	 A green-handled slotted screwdriver with a silver metal shaft and a black tip, lying horizontally on a light-colored wooden surface.
Six Point Sockets	 A yellow-handled six-point socket screwdriver with a silver metal shaft and a black tip, lying horizontally on a light-colored wooden surface.
Philips Screwdriver for M2.5 screw	 A red-handled Philips screwdriver with a silver metal shaft and a black tip, lying horizontally on a light-colored wooden surface.
knife	 A silver folding knife with a black handle and a silver blade, lying horizontally on a light-colored wooden surface.

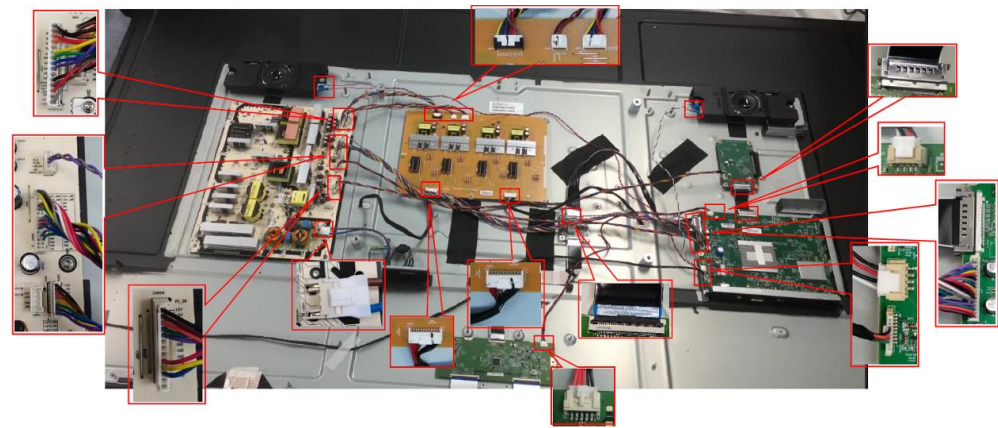
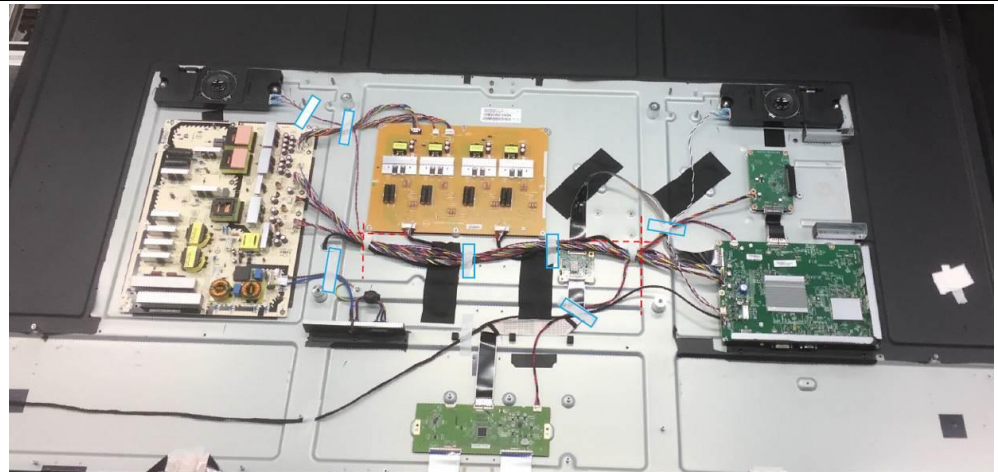


Remove the
BKT_OPS_COVER,
DIE-CASTING,
REAR_COVER_MID
and
REAR_COVER_BTM.

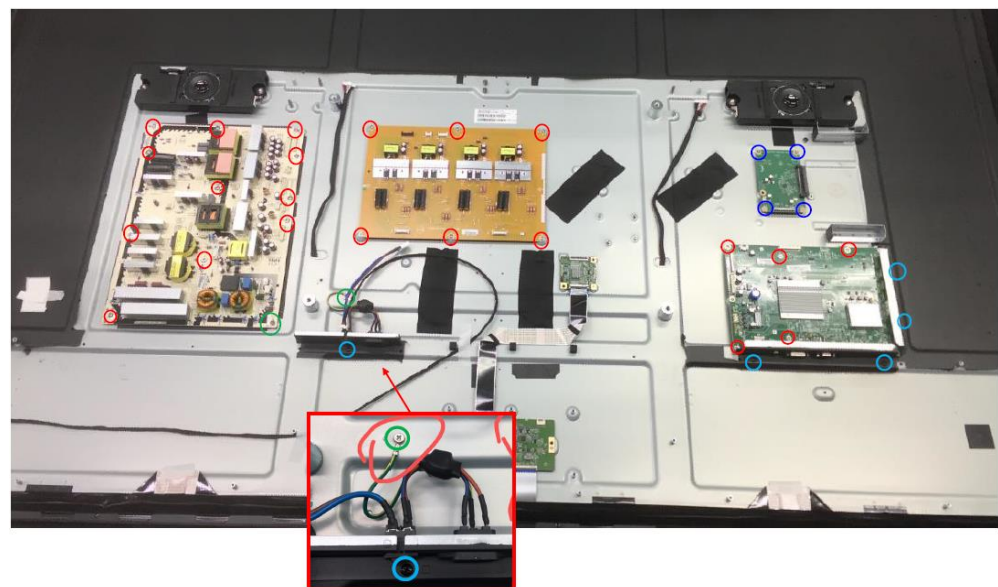


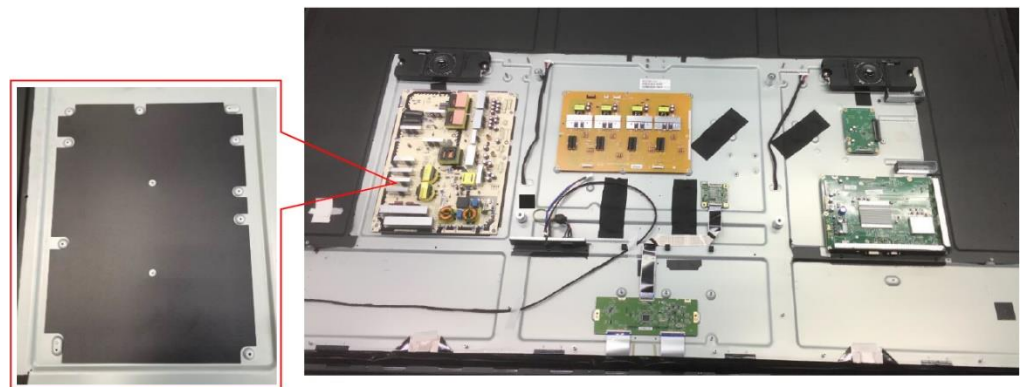
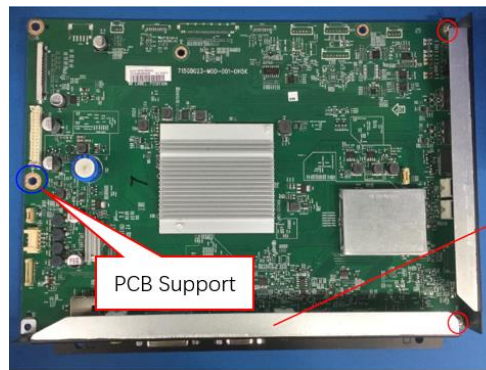


Remove all the tapes and the pins.

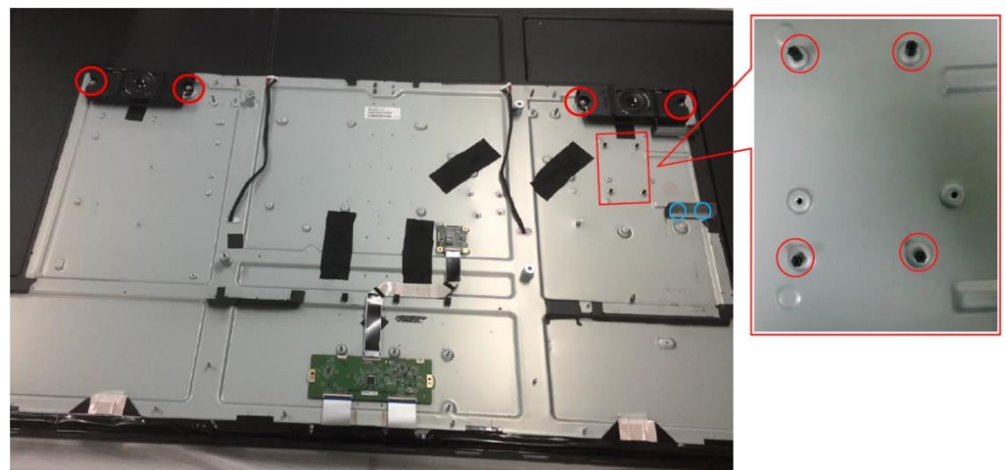
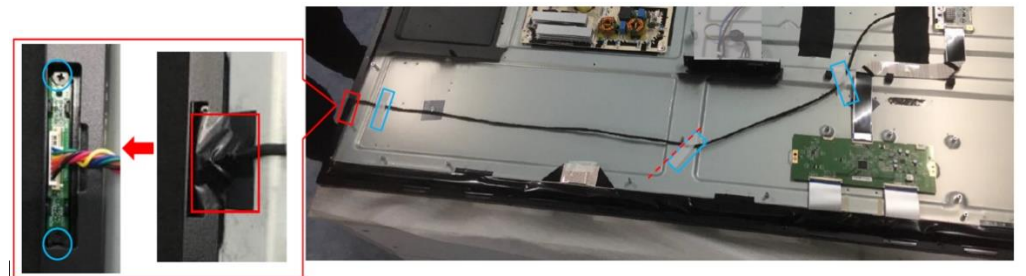


Remove the screws to remove the main board, power board, connector board and converter board. And then remove the Mylar.



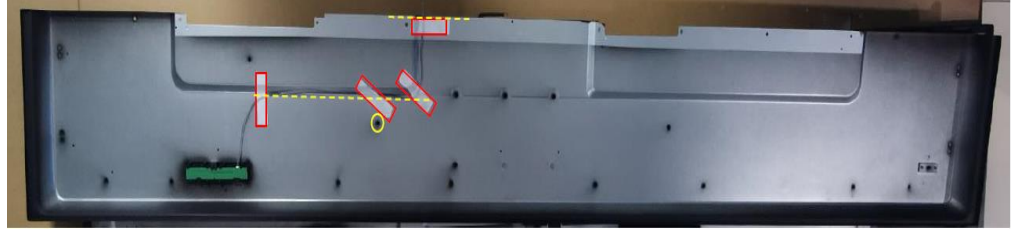


Take off the tapes and remove the IR board. Remove the speakers and the BKT_OPS_CHASSIS.





Tear off the tapes and remove the key board from the REAR_COVER_BTM



Remove the AC inlet ASSY and the key board & IR board.



Disassembly Time

Total time: about 60 minutes