



PointWrite

Calibration guide



BenQ HQ

2013/2/15

Installation



Mounting

Fix PW01 module to the bottom case of the projector with a screw which could be found in PW01 kit packing list.

1.



2.



Connecting

Plug in with USB cable and connect to PC.

The LED indicator on PW01 show red means the it has already been power and operated.



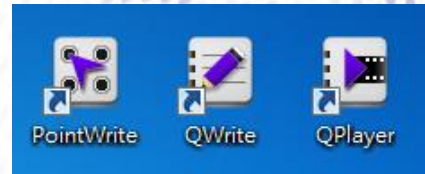
Computer

← USB cable

Calibration(1/3)



STEP1. install PointWrite and Qwrite

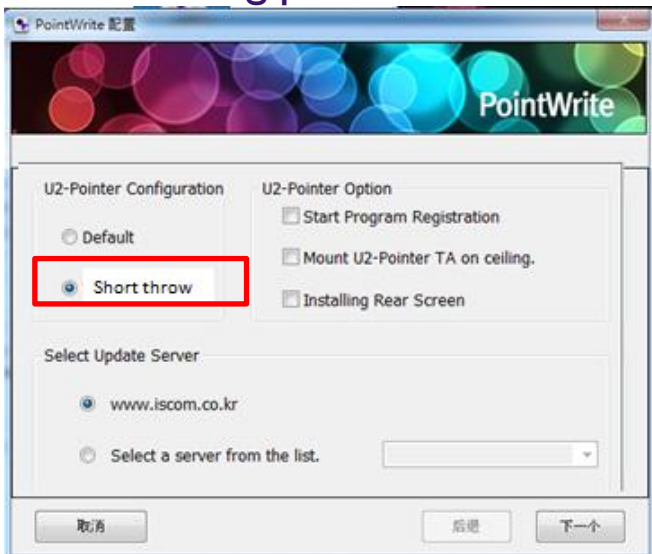
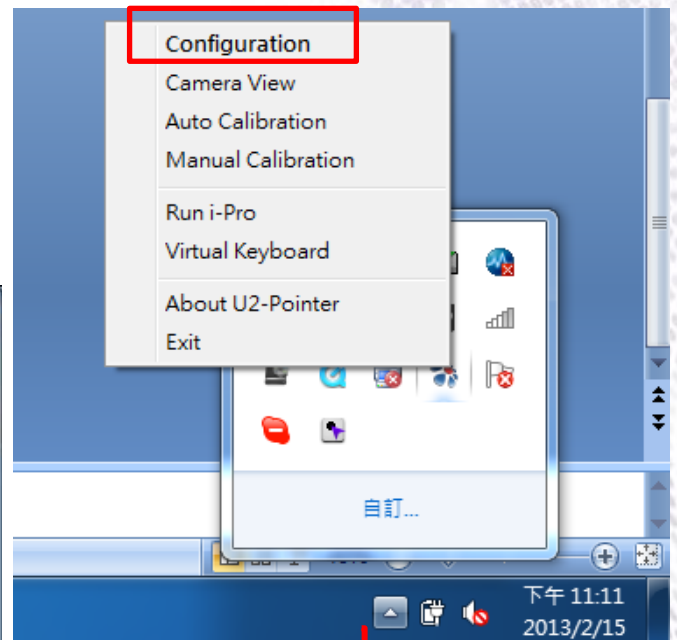


STEP2. active PointWrite and start for calibration process

Seeing the pop up message means PW01 is under operating



click right key on the mouse and select "configuration"
Select short throw and your mounting position.

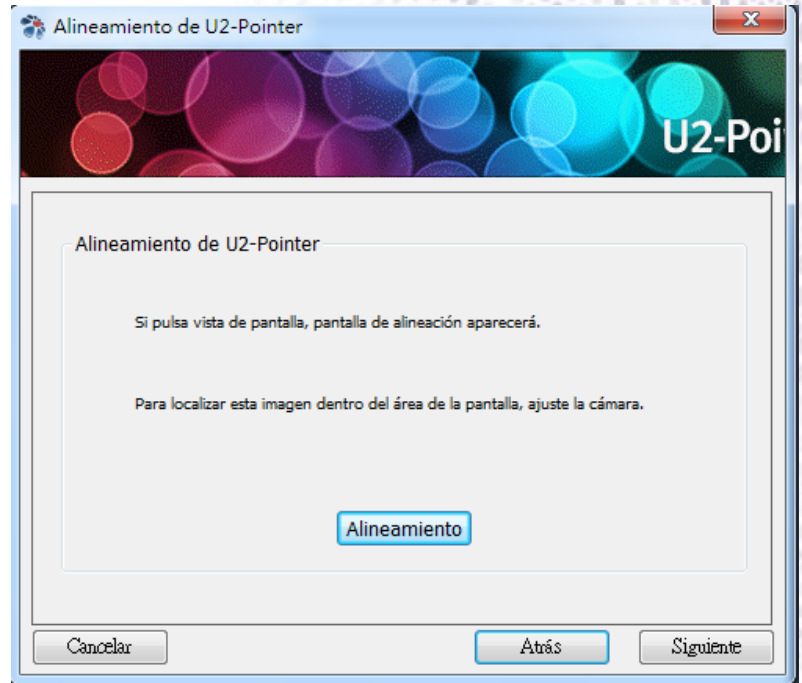


Note : It's named Upointer and I pro for vender test

Calibration(2/3)



Click alignment

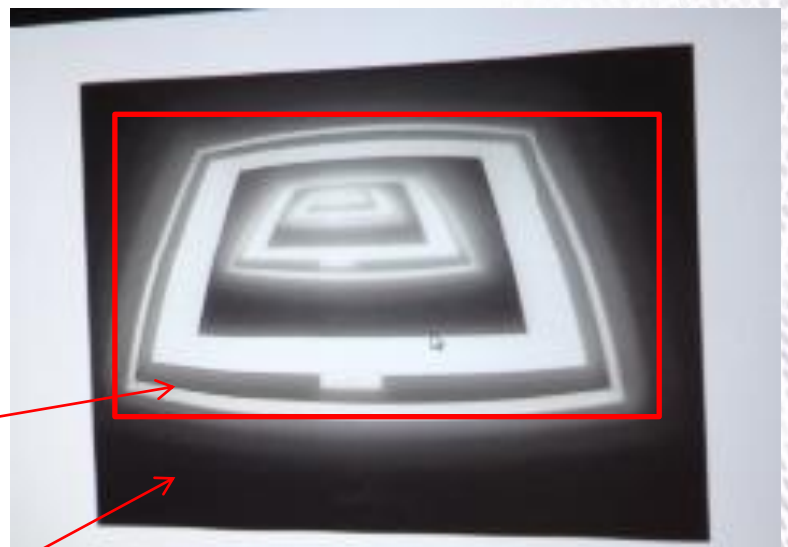


Important !

Make sure the pattern is totally covered in black area.

pattern

Black area

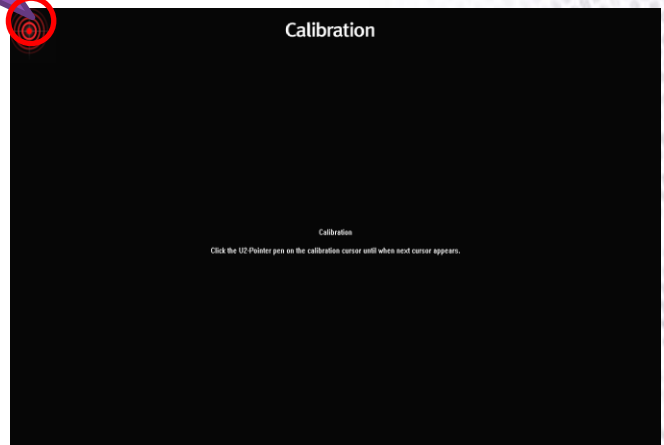
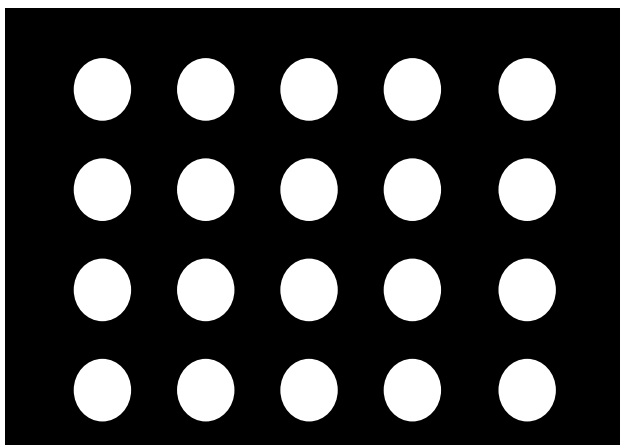
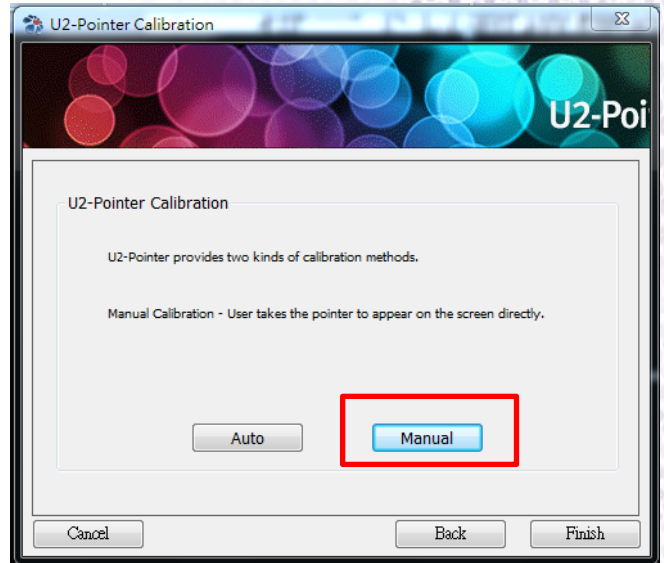


Calibration(3/3)



Select auto calibration and wait below pop up then the calibration finish.

Select manual calibration for 16 point via PW01 pen click to points of the wall.



Auto calibration speed to be around 1~3sec depends on PC CPU perform.

Perform more accurate on the corner.

Problem shooting



Calibration fail

1. If your meet calibration fail problem, try to turn down the brightness in the room.
2. Check again your projection screen is under the affective capture area .WXGA model will be more risky to fact this problem compare to XGA models.



205 Westwood Ave, Long Branch, NJ 07740
Phone: 866-94 BOARDS (26273) / (732)-222-1511
Fax: (732)-222-7088 | E-mail: sales@touchboards.com