



Because it matters

See it. Believe it.

BenQ digital signage brochure 2020



Because it matters

Dealer's Stamp



Headquarters BenQ Corporation 16 Jihu Road, Neihu, Taipei 114, Taiwan Tel : +886-2-2727-8899 Fax : +886-2-2656-2438	Asia Pacific BenQ Asia Pacific Corp. 12 Jihu Road, Neihu, Taipei 114, Taiwan Tel : +886-2-2727-8899 Fax : +886-2-2656-2438	China BenQ (IT) Co., Ltd. 181 Zhuyuan Road, Suzhou New District, Suzhou, China Tel : +86-512-6807-8800 Fax : +86-512-6809-7010	North America BenQ America Corp. 3200 Park Center Drive, Suite 150 Costa Mesa, CA 92626 U.S.A. Tel : +1-714-559-4900 Fax : +1-714-557-0200	Europe BenQ Europe B.V. Meerenakkerweg 1-17, 5652 AR Eindhoven, The Netherlands Tel : +31(0) 88-888-9200 Fax : +31(0) 88-888-9299	Latin and Central America BenQ Latin America Corp. 8200 N.W. 33 Street, Suite 301 Miami, FL 33122 U.S.A. Tel : +1-305-4211200 Fax : +1-305-4211201
---	--	--	---	--	---



Reality just got more interesting

Shape how people see the world around them with visuals so stunning, they won't believe their eyes. BenQ's wide selection of digital signage allows you transform any kind of space into an immersive audiovisual experience. Combine any of BenQ's smart signage and displays—Pantone Validated, 4K, stretched, or interactive—to create eye-catching installations that fit any environment or use BenQ's video wall solutions for larger-than-life displays.

Unparalleled color accuracy

BenQ is the only digital signage provider in the market that offers end-to-end color fidelity with its Pantone Validated content creation and display system. Through this system, artists are guaranteed that the color of their designs are exactly the same whether they're viewing it through their BenQ production monitor or smart signage.

■ Pantone mode is available on the SL series. For the full list of Pantone Validated monitors, visit the BenQ website.

Visuals bursting with vivid color

Rely on BenQ's color expertise to give your audience an unparalleled visual experience every time. Our full portfolio of smart signage guarantees dynamic colors every time. BenQ has also developed specific color modes for the Pantone Validated Smart Signage series that perfectly show off any type of content—from high-resolution photographs and illustrations to rich and vibrant 4K videos.

There's always more to see

More than just your regular digital displays, BenQ's robust portfolio of smart signage allows you to easily customize the mood of any space—large or small, indoors or alfresco, dim or extra bright. With displays that come in a wide array of sizes, frames, and screen finishes, you are free to showcase your content any way you want to.

Awards



2020 Best of Show InfoComm Award
Pantone Validated Smart Signage Series



2019 ISE Best of Product
4K Smart Signage Series





SL6502K

Precise and vivid colors for fashion displays with flair

Whether it's for a fall or spring collection, BenQ lets you create an in-store experience like no other. With the SL series, the world's first and only Pantone® Validated digital signage, fashion houses can easily curate the look and feel of their stores by allowing them to display their campaigns in 4K ultra-high definition resolution with scientific color accuracy. Paired with our smart stretched displays, they provide a full, immersive visual experience that both captivates and engages customers.

Pantone Validated Smart Signage Series

SL5502K / SL6502K / SL8502K

Available sizes: 43", 55", 65", 75", and 85"

End-to-end color fidelity

Experience true, flawless color fidelity from design to distribution with BenQ's Pantone Validated signage solutions. Create color-consistent custom content using X-Sign Designer's Pantone color picker and display it on our SL series, the world's first and only Pantone Validated digital signage.

MacBook color matching

Mac-based designers no longer have to recalibrate the colors of their content. The image quality provided by M-Book mode stays true to the visuals displayed on their MacBook.

4K UHD clarity

Our display's 4K UHD resolution produces pictures so vivid that customers are able to see every flourish and detail of your designs.

Life-like visuals

With 4K UHD resolution and screens this large, you can treat your displays as moving fashion campaigns. It's a fashion show right inside your store.

* Supported by: SL7502K and SL8502K



SL5502K



SL8502K

24/7 non-stop operation

Each panel is designed for 50,000 hours of use. They guarantee long service life and minimal to zero downtime.

Smart Stretched Display Series

BH2801

Available sizes: 24", 28", 35", and 38"

Aesthetics that fit

BenQ smart stretched display's sleek design matches any store's chic interiors. Its high-performance, anti-reflective glass guarantees clear, vibrant images every time.

Curate once, the rest will follow

Ensuring that all your boutiques stick to the motif is easy. With the X-Sign content management system, you can be sure that only your campaigns are playing on each and every display across all your stores. You always get uniform messaging with zero fuss.



BH2801

Designed for creative installations

Our smart signage support both portrait and landscape installations, while our smart stretched displays can be combined to create unique and interesting canvases. These offer designers the flexibility they need to craft engaging retail displays that maximize every inch of their store's physical space.



PL5502

Bigger, bolder visuals for stronger brand awareness

It's not that hard to get everyone looking. Show off your apparel with BenQ displays. Our Video Wall series lets you build larger-than-life video walls that effectively advertise your best items in stock. On the other hand, our 4K Smart Signage and Smart Stretched Display series allow you to show off content in a variety of configurations, allowing you to create the perfect visuals that are 100% bound to catch attention.

Video Wall Series

PL5502

Available sizes: 49" and 55"

Bezels so thin, they're barely there

At 0.44 mm bezels, our video wall displays have some of the skinniest bezels in the industry, making them perfect for video walls and side-to-side installations that deliver seamless, distortion-free images.

Stunning color consistency

Our video walls are expertly color calibrated so you always get one full image with accurate and consistent colors that span from corner to corner.

4K Smart Signage Series

ST4302 / ST8602

Available sizes: 43", 55", 65", 75", and 86"

True-to-life aspect ratio

Our wide array of screen sizes allows you to either use one large signage or create a video wall through X-Sign to showcase designs in full scale, giving shoppers a life-size glimpse of every outfit.



ST8602

Smart Stretched Display Series

BH3801D

Available sizes: 24", 28", 35" and 38"

Double-sided for double impact

Catch shoppers' attention whichever side of the rack they're on. Our double-sided smart stretched displays make full use of your shelves, allowing you to convert unused space into eye-catching mini billboards for your products.



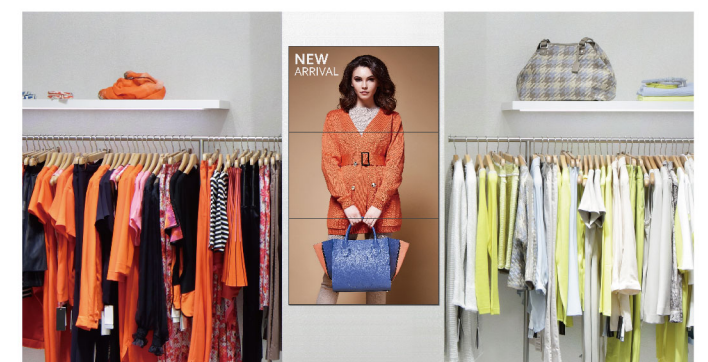
PL5502

Daisy-chaining with 4K clarity

Our razor-thin displays allow you to daisy chain a 2x2 video wall while still giving you unmatched 4K UHD clarity.

Convenient audiovisual playback

Our smart signage has a built-in player and speakers, making it ideal for quick and easy playback of in-store ads and announcements. You can play audiovisual content locally through an attached storage device, over the internet with X-Sign, or any compatible content management system.



ST4302



BH3801D



ST4302

4K Smart Signage Series

ST4302 / ST5502

Available sizes: 43", 55", 65", 75" and 86"

Mouthwatering 4K UHD

Tingle those taste buds with gastronomic visuals so vivid they're good enough to eat.

Visible content in any lighting

The brightness of our smart signage goes up to 450 nits and come with a matte finish. This ensures that your menus never get drowned out by glare and strong ambient light.



ST5502

Smart Interactive Signage Series

IL430

Available sizes: 43", 49" and 55"

Tap-to-engage

Engage your customers through IR touch technology. Our end-to-end interactive system—X-Sign and the IL series—allows you to easily create and display exciting interactive content with ease.

Content in any orientation

Don't get stuck in one dimension. Whether your designs are made to go from top to bottom or left to right, you can install our smart interactive signage vertically or horizontally to easily match your content.

For ready-to-serve menus and promos

Menu, please! With BenQ 4K smart signage and X-Sign, it's easier for your customers to know what they want for a quick brunch or dinner. X-Sign's simple content creation and delivery system lets you update your menus any time of the day. And whether it's a new set meal or a seasonal drink, promos also get easier to push with just a few clicks. You can even have smart interactive displays, allowing customers to freely order at their own convenience.

Real-time menu updates

Easily update the menus to all your branches with just a few clicks on our X-Sign content management system.

Hassle-free maintenance

Your staff doesn't need to visit every branch to check device performance or update firmware. They can just log in to our device management solution (DMS) and do so from there.



IL430



BH3801D

Make your point-of-purchase signs pop!

What's fresh? What's hot? And what's on sale? Let shoppers know the best deals no matter where they are in the supermarket. BenQ has the most comprehensive fleet of smart stretched displays, with an assortment of sizes and includes touch and non-touch, single and double-sided, glass and non-glass models. With BenQ displays on every shelf and aisle, your shoppers always get an eyeful of what's available without sacrificing product space. For larger, more dynamic visuals, you can use BenQ 4K smart signage to give your in-store promos the attention they deserve.

Easy content creation and playback

Our X-Sign system simplifies in-store content creation and delivery by giving you all the tools you need to design and broadcast content to all your BenQ displays—even for specially formatted stretched displays. And since both our smart signage and smart stretched displays come with built-in media players and speakers, you can instantly show off your content without using additional peripherals.

Flexible, streamlined installation options

Go horizontal or go vertical. Our smart stretched displays and smart signage* offer the flexibility to show content in any orientation. We offer optional adjustable mounts and power hubs to ensure that your customers always get an optimal view of your displays from any angle while hiding messy wiring.

* selected models

Smart Stretched Display Series

BH3801D / BH2401T / BH3501T

Available sizes: 24", 28", 35", and 38"

Clear images in every light

Our smart stretched displays are built with high performance, anti-reflective glass and deliver 1000 nits of brightness, ensuring striking colors and clarity even in the brightest parts of your store.

* Supported by: BH2401, BH3501, BH2801, BH3801, BH2801N, BH3801N, BH2401T, and BH3501T

Better on both sides

Your shelves are double-sided, why not your signage? Our double-sided smart stretched displays are bound to capture your shoppers' attention on either side of the aisle.

* Supported by: BH3801D



BH2401T / BH3501T

Touchscreen interactivity

Break the boredom. Make shopping more amusing with highly interactive POP displays that are both informative and fun.

* Supported by: BH2401T and BH3501T

4K Smart Signage Series

ST6502

Available sizes: 43", 55", 65", 75", and 86"

Picture-perfect produce

With crisp 4K UHD resolution, our displays are sure to make all your products stand out.



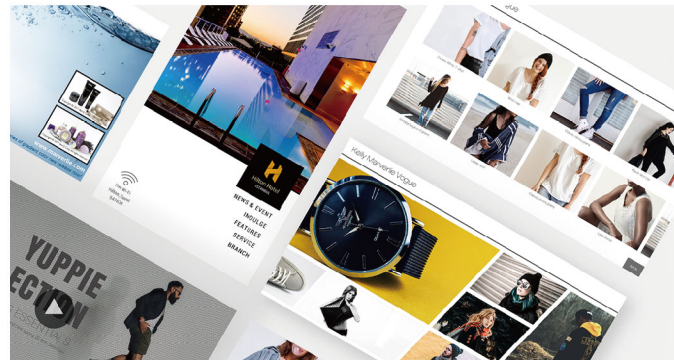
ST6502

X-Sign

No content? No problem. With the X-Sign system, you can create, schedule, and display content as easily as posting on social media.

X-Sign Designer

You don't need to be an expert to create original content. We provide an extensive library of customizable templates you can choose from. All you need to do is enter your text or import multimedia files. You can even make them interactive by adding links on the screen. And for any changes—like new products, price updates, and whatnot—you can conveniently push them out in real time.



X-Sign Manager

You've got the power. With X-Sign Manager, all the content for all your displays is at your fingertips. If Designer lets you customize the visuals, then Manager lets you control when and where they're published and how often people get to see them. It even lets you track how your customers interact to your content.

Custom playlists

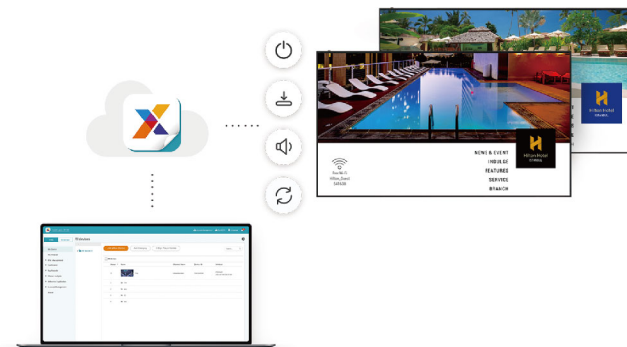
Control the media playback on all of your displays by either creating scheduled content playlists or pushing out real-time content for live promotions.

Central management

Monitor and maintain all your local and remote displays through one simple management console.

Engagement monitoring

Find out how your customers interact with your content. X-Sign Manager collects and summarizes all engagement data for all your displays.



X-Sign Player

Since our displays come with a built-in player, you don't need to buy an extra laptop or download additional software. You can directly stream content from X-Sign Manager or easily play files from a USB stick. You can also install X-Sign Player on iPads or Windows devices to ensure that content is uniformly displayed across all your in-store playback devices, regardless of their platform.

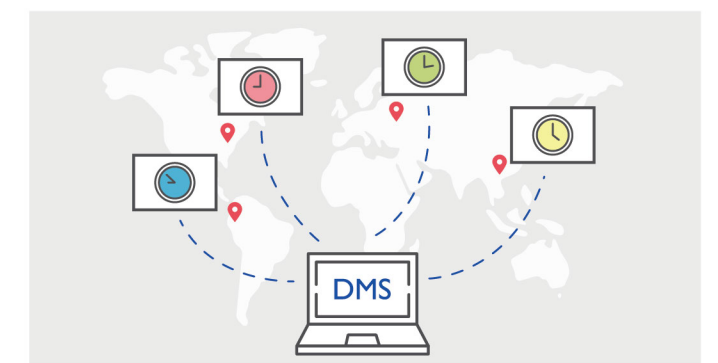
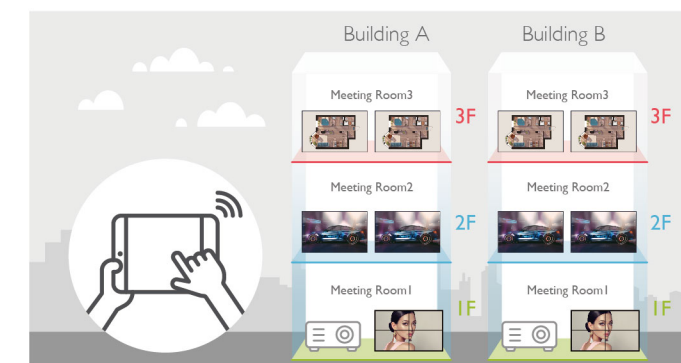


Device Management Solution (DMS)

BenQ DMS is the ultimate management solution for all your displays and signage. Whether you want to mount a single display in a coffee shop or install a multi-panel video wall in a mall, use DMS to maintain all your devices simultaneously, ensuring uptime and productivity.

Centralized device management

Monitor and remotely adjust the settings of your displays over the internet or a local network. This is especially useful when calibrating displays installed in hard-to-reach places. With DMS, you can also schedule when devices switch on and off to reduce wear and tear and overall power consumption.



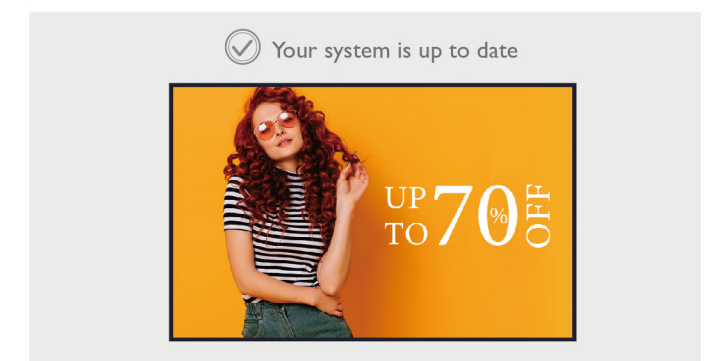
Remote app management

Remotely install, update, and remove Android apps on your displays through DMS Cloud. This is especially helpful for retailers with displays installed in multiple locations.



Over-the-air (OTA) updates

Receive the latest firmware updates, patches, and app features to keep your displays secure and running smoothly at all times.



For the full hardware and software specifications, scan the QR code or visit <https://www.benq.com/en-us/business/signage.html>



Key Features

Pantone Validated Smart Signage Series

SL4302K / SL5502K / SL6502K / SL7502K / SL8502K

- The world's first and only PANTONE® Validated digital signage
- M-Book mode for macOS matching
- Portrait or landscape view
- 4K UHD clarity & 24/7 non-stop operation
- Built-in Android™ OS

4K Smart Signage Series

ST4302 / ST5502 / ST6502 / ST7502 / ST8602

- 4K UHD clarity & anti-glare display
- Built-in Android™ OS
- Available OPS slot

Smart Stretched Display Series

BH2401 / BH3501 / BH2801 / BH3801 / BH3801D / BH2801N / BH3801N / BH2401T / BH3501T

- Built-in Android™ OS & built-in speaker
- 1000 nits high brightness (BH3801D: 700 nits)
- Portrait or landscape view
- 24/7 non-stop operation
- Integrated X-Sign software with stretched content templates

Smart Interactive Signage Series

IL430 / IL490 / IL550

- X-Sign interactive templates
- Touch engagement tracking with centralized data collection
- Built-in Android™ OS
- Portrait or landscape view

Video Wall Series

PL4901 / PL5501 / PL5502

- 0.88 mm bezel-to-bezel design for PL5502
- DP daisy chain for stunning 2x2 4K clarity
- Consistent colors from panel to panel
- 24/7 non-stop operation in portrait or landscape view

* **All models are compatible with X-Sign** (BenQ's content creation, management, and playback system) **and DMS** (BenQ's Device Management Solution).

Pantone Validated Smart Signage Series

Models	SL4302K	SL5502K	SL6502K	SL7502K	SL8502K
Panel					
Screen Size	43"	55"	65"	75"	85"
Backlight	Edge LED	Edge LED	Direct LED	Direct LED	Direct LED
Active area (WxH)	941.2 x 529.4 mm	1209.6 x 680.4 mm	1428.5 x 803.5 mm	1649.7 x 927.9 mm	1872.0 x 1053.0 mm
Resolution	3840 x 2160 pixels	3840 x 2160 pixels	3840 x 2160 pixels	3840 x 2160 pixels	3840 x 2160 pixels
Brightness (typ.)	500 nits	500 nits	500 nits	500 nits	500 nits
Contrast ratio (typ.)	1200:1	1200:1	1200:1	1200:1	5000:1
Viewing angle (HxV)	178°/178°	178°/178°	178°/178°	178°/178°	178°/178°
Aspect ratio	16 : 9	16 : 9	16 : 9	16 : 9	16 : 9
Light life (typ.)	50000 hrs	50000 hrs	50000 hrs	50000 hrs	50000 hrs
Display orientation	• Landscape/Portrait	• Landscape/Portrait	• Landscape/Portrait	• Landscape/Portrait	• Landscape/Portrait
Touch					
Technology	N/A	N/A	N/A	N/A	N/A
Resolution (points area function)	N/A	N/A	N/A	N/A	N/A
System					
OS	Android 8.0	Android 8.0	Android 8.0	Android 8.0	Android 8.0
System memory	4 GB	4 GB	4 GB	4 GB	4 GB
Storage	32 GB	32 GB	32 GB	32 GB	32 GB
Speakers					
InterN/AI	2 x 10 W	2 x 10 W	2 x 10 W	2 x 16 W	2 x 16 W
System memory	N/A	N/A	N/A	N/A	N/A
3.5 mm line-out	I	I	I	I	I
Connectivity					
Video input	• 2 x HDMI • DisplayPort • VGA	• 2 x HDMI • DisplayPort • VGA	• 2 x HDMI • DisplayPort • VGA	• 2 x HDMI • DisplayPort • VGA	• 2 x HDMI • DisplayPort • VGA
Video output	• HDMI • 3.5 mm audio	• HDMI • 3.5 mm audio	• HDMI • 3.5 mm audio	• HDMI • 3.5 mm audio	• HDMI • 3.5 mm audio
USB	• 2 x Type-A (2.0) / 2 x Type-A (3.0)	• 2 x Type-A (2.0) / 2 x Type-A (3.0)	• 2 x Type-A (2.0) / 2 x Type-A (3.0)	• 2 x Type-A (2.0) / 2 x Type-A (3.0)	• 2 x Type-A (2.0) / 2 x Type-A (3.0)
RJ45	I	I	I	I	I
Control					
RS232	I	I	I	I	I
Power					
Power	AC 100V-240V, 50/60Hz	AC 100V-240V, 50/60Hz	AC 100V-240V, 50/60Hz	AC 100V-240V, 50/60Hz	AC 100V-240V, 50/60Hz
Switch	I	I	I	I	I
Consumption (typ./stby.)	92 W / 0.5 W	118.2 W / 0.5 W	225 W / 0.5 W	274.5 W / 0.5 W	295.3 W / 0.5 W
Physical					
Dimensions (WxHxD)	965.5 x 553.9 x 57.5 mm	1236.4 x 707.2 x 63.1 mm	1454.6 x 829.6 x 72.0 mm	1689.5 x 967.7 x 91.1 mm	1902.0 x 1083.0 x 84.0 mm
Bezel width (T/B/L/R)	11.7/11.7/11.7/11.7 mm	11.8/11.8/11.8/11.8 mm	12.6/12.6/12.6/12.6 mm	19.3/19.3/19.3/19.3 mm	13.0/13.0/13.0/13.0 mm
Weight (prod./ship.)	17.2 kg / 24.5 kg	26.4 kg / 31.4 kg	35.5 kg / 48.0 kg	52.0 kg / 60.5 kg	50.0 kg / 60.5 kg
VESA mount	400 x 400	400 x 400	400 x 400	600 x 400	600 x 400
Environment					
Operating temperature	0°C to 40°C	0°C to 40°C	0°C to 40°C	0°C to 40°C	0°C to 40°C
Storage temperature	-10°C to 60°C	-10°C to 60°C	-10°C to 60°C	-10°C to 60°C	-10°C to 60°C
Usage	24 hours / 7 days	24 hours / 7 days	24 hours / 7 days	24 hours / 7 days	24 hours / 7 days
Software Compatibility					
OSD languages	27	27	27	27	27
DMS	Cloud + Local	Cloud + Local	Cloud + Local	Cloud + Local	Cloud + Local
X-Sign	Yes	Yes	Yes	Yes	Yes
Accessories					
Remote control	I	I	I	I	I
Power cord	7	7	7	7	7
VGA cable	I	I	I	I	I
HDMI cable	I	I	I	I	I
DP cable	N/A	N/A	N/A	N/A	N/A
RS232 cable	I	I	I	I	I
Quick start guide	I	I	I	I	I
User manual	Online	Online	Online	Online	Online

4K Smart Signage Series

Models	ST4302	ST5502
Panel		
Screen Size	43"	55"
Backlight	Edge LED	Edge LED
Active area (WxH)	941.2 x 529.4 mm	1209.6 x 680.4 mm
Resolution	3840 x 2160 pixels	3840 x 2160 pixels
Brightness (typ.)	450 nits	450 nits
Contrast ratio (typ.)	5000:1	4500:1
Viewing angle (HxV)	178°/178°	178°/178°
Aspect ratio	16 : 9	16 : 9
Light life (typ.)	30000 hrs	30000 hrs
Display orientation	• Landscape/Portrait	• Landscape/Portrait
Touch		
Technology	N/A	N/A
Resolution (points area function)	N/A	N/A
System		
OS	Android 8.0	Android 8.0
System memory	3 GB	3 GB
Storage	16 GB	16 GB
Speakers		
InterN/AI	2 x 12 W	2 x 12 W
System memory	I	I
3.5 mm line-out	I	I
Connectivity		
Video input	• 2 x HDMI (2.0) • DisplayPort (1.2) • VGA	• 2 x HDMI (2.0) • DisplayPort (1.2) • VGA
Video output	• HDMI (2.0)	• HDMI (2.0)
USB	• 2 x Type-A (2.0) / 1 x Type-A (3.0) for OPS	• 2 x Type-A (2.0) / 1 x Type-A (3.0) for OPS
RJ45	I	I
Control		
RS232	I	I
Power		
Power	AC 100V-240V, 50/60Hz	AC 100V-240V, 50/60Hz
Switch	I	I
Consumption (typ./stby.)	170 W / 0.5 W	280 W / 0.5 W
Physical		
Dimensions (WxHxD)	961.4 x 553.7 x 71.9 mm	1233.6 x 708.4 x 76.6 mm
Bezel width (T/B/L/R)	11.7/11.7/11.7/11.7 mm	11.8/11.8/11.8/11.8 mm
Weight (prod./ship.)	11.6 kg / 15.9 kg	18.4 kg / 25.7 kg
VESA mount	200 x 200	400 x 200
Environment		
Operating temperature	0°C to 40°C	0°C to 40°C
Storage temperature	-10°C to 60°C	-10°C to 60°C
Usage	18 hours / 7 days	18 hours / 7 days
Software Compatibility		
OSD languages	27	27
DMS	Cloud + Local	Cloud + Local
X-Sign	Yes	Yes
Accessories		
Remote control	I	I
Power cord	8	8
VGA cable	I	I
HDMI cable	I	I
DP cable	I	I
RS232 cable	I	I
Quick start guide	I	I
User manual	Online	Online

4K Smart Signage Series

Models	ST6502	ST7502	ST8602
Panel			
Screen Size	65"	75"	86"
Backlight	Direct LED	Direct LED	Direct LED
Active area (WxH)	1428.5 x 803.5 mm	1649.7 x 927.9 mm	1895.0 x 1066.0 mm
Resolution	3840 x 2160 pixels	3840 x 2160 pixels	3840 x 2160 pixels
Brightness (typ.)	450 nits	450 nits	450 nits
Contrast ratio (typ.)	1200:1	1200:1	1200:1
Viewing angle (HxV)	178°/178°	178°/178°	178°/178°
Aspect ratio	16 : 9	16 : 9	16 : 9
Light life (typ.)	30000 hrs	30000 hrs	30000 hrs
Display orientation	• Landscape	• Landscape	• Landscape
Touch			
Technology	N/A	N/A	N/A
Resolution (points area function)	N/A	N/A	N/A
System			
OS	Android 8.0	Android 8.0	Android 8.0
System memory	3 GB	3 GB	3 GB
Storage	16 GB	16 GB	16 GB
Speakers			
InterN/AI	2 x 12 W	2 x 12 W	2 x 12 W
System memory	I	I	I
3.5 mm line-out	I	I	I
Connectivity			
Video input	• 2 x HDMI (2.0) • DisplayPort (1.2) • VGA	• 2 x HDMI (2.0) • DisplayPort (1.2) • VGA	• 2 x HDMI (2.0) • DisplayPort (1.2) • VGA
Video output	• HDMI (2.0)	• HDMI (2.0)	• HDMI (2.0)
USB	• 2 x Type-A (2.0) / 1 x Type-A (3.0) for OPS	• 2 x Type-A (2.0) / 1 x Type-A (3.0) for OPS	• 2 x Type-A (2.0) / 1 x Type-A (3.0) for OPS
RJ45	I	I	I
Control			
RS232	I	I	I
Power			
Power	AC 100V-240V, 50/60Hz	AC 100V-240V, 50/60Hz	AC 100V-240V, 50/60Hz
Switch	I	I	I
Consumption (typ./stby.)	300 W / 0.5 W	300 W / 0.5 W	450 W / 0.5 W
Physical			
Dimensions (WxHxD)	1450.6 x 828.1 x 78.5 mm	1672.2 x 954.9 x 75.3 mm	1930.8 x 1109.3 x 82.4 mm
Bezel width (T/B/L/R)	8.8/12.8/8.8/8.8 mm	9.0/13.2/9.0/9.0 mm	13.9/23.4/13.9/13.9 mm
Weight (prod./ship.)	22.9 kg / 33.6 kg	29.3 kg / 41.7 kg	50.4 kg / 69.8 kg
VESA mount	400 x 200	400 x 200	600 x 400
Environment			
Operating temperature	0°C to 40°C	0°C to 40°C	0°C to 40°C
Storage temperature	-10°C to 60°C	-10°C to 60°C	-10°C to 60°C
Usage	18 hours / 7 days	18 hours / 7 days	18 hours / 7 days
Software Compatibility			
OSD languages	27	27	27
DMS	Cloud + Local	Cloud + Local	Cloud + Local
X-Sign	Yes	Yes	Yes
Accessories			
Remote control	I	I	I
Power cord	8	8	8
VGA cable	I	I	I
HDMI cable	I	I	I
DP cable	I	I	I
RS232 cable	I	I	I
Quick start guide	I	I	I
User manual	Online	Online	Online

Smart Stretched Display Series

Models	BH240I	BH350I	BH280I	BH380I
Panel				
Screen Size	24"	35"	28"	38"
Backlight	Edge LED	Edge LED	Edge LED	Edge LED
Active area (WxH)	597.6 x 58.0 mm	885.6 x 57.5 mm	699.4 x 133.0 mm	920.3 x 289.2 mm
Resolution	1920 x 190 pixels	1920 x 130 pixels	1920 x 360 pixels	1920 x 600 pixels
Brightness (typ.)	1000 nits	1000 nits	1000 nits	1000 nits
Contrast ratio (typ.)	3000:1	3000:1	3000:1	3000:1
Viewing angle (HxV)	178°/178°	178°/178°	178°/178°	178°/178°
Aspect ratio	16 : 1.6	16 : 1	16 : 3	16 : 5
Light life (typ.)	55000 hrs	55000 hrs	55000 hrs	55000 hrs
Display orientation	• Landscape/Portrait	• Landscape/Portrait	• Landscape/Portrait	• Landscape/Portrait
Touch				
Technology	N/A	N/A	N/A	N/A
Resolution (points area function)	N/A	N/A	N/A	N/A
System				
OS	Android 6.0	Android 6.0	Android 6.0	Android 6.0
System memory	2 GB	2 GB	2 GB	2 GB
Storage	32 GB	32 GB	32 GB	32 GB
Speakers				
InterN/AI	2 x 1 W	2 x 1 W	2 x 1 W	2 x 1 W
System memory	N/A	N/A	N/A	N/A
3.5 mm line-out	N/A	N/A	N/A	N/A
Connectivity				
Video input	• HDMI (1.4)	• HDMI (1.4)	• HDMI (1.4)	• HDMI (1.4)
Video output	N/A	N/A	N/A	N/A
USB	• 2 x Type-A (2.0)	• 2 x Type-A (2.0)	• 2 x Type-A (2.0)	• 2 x Type-A (2.0)
RJ45	I	I	I	I
Control				
RS232	I	I	I	I
Power				
Power	AC 100V-240V, 50/60Hz	AC 100V-240V, 50/60Hz	AC 100V-240V, 50/60Hz	AC 100V-240V, 50/60Hz
Switch	I	I	I	I
Consumption (typ./stby.)	13 W / 0.5 W	18 W / 0.5 W	20 W / 0.5 W	38 W / 0.5 W
Physical				
Dimensions (WxHxD)	629.6 x 90.0 x 45.5 mm	905.0 x 89.2 x 45.3 mm	728.8 x 162.4 x 45.5 mm	949.6 x 317.6 x 45.6 mm
Bezel width (T/B/L/R)	15.5/15.5/15.5/15.5 mm	11.8/11.8/11.8/11.8 mm	14.7/14.7/14.7/14.7 mm	14.2/14.2/14.7/14.7 mm
Weight (prod./ship.)	3.4 kg / 5.5 kg	3.9 kg / 6.4 kg	5.3 kg / 8.1 kg	11.0 kg / 14.4 kg
VESA mount	430 x 60	430 x 60	400 x 100	400 x 100
Environment				
Operating temperature	0°C to 50°C	0°C to 50°C	0°C to 50°C	0°C to 50°C
Storage temperature	-25°C to 60°C	-25°C to 60°C	-25°C to 60°C	-25°C to 60°C
Usage	24 hours / 7 days	24 hours / 7 days	24 hours / 7 days	24 hours / 7 days
Software Compatibility				
OSD languages	27	27	27	27
DMS	Cloud + Local	Cloud + Local	Cloud + Local	Cloud + Local
X-Sign	Yes	Yes	Yes	Yes
Accessories				
Remote control	I	I	I	I
Power cord	6	6	6	6
VGA cable	N/A	N/A	N/A	N/A
HDMI cable	I	I	I	I
DP cable	N/A	N/A	N/A	N/A
RS232 cable	I	I	I	I
Quick start guide	I	I	I	I
User manual	Online	Online	Online	Online

Smart Stretched Display Series

Models	BH2801N	BH3801N	BH3801D	BH2401T	BH3501T
Panel					
Screen Size	28"	38"	38"	24"	35"
Backlight	Edge LED	Edge LED	Edge LED	Edge LED	Edge LED
Active area (WxH)	699.4 x 133.0 mm	921.3 x 290.0 mm	920.3 x 288.0 mm	597.6 x 58.0 mm	885.6 x 57.5 mm
Resolution	1920 x 360 pixels	1920 x 600 pixels	1920 x 600 pixels	1920 x 187 pixels	1920 x 122 pixels
Brightness (typ.)	1000 nits	1000 nits	700 nits	1000 nits	1000 nits
Contrast ratio (typ.)	3000:1	3000:1	1000:1	3000:1	3000:1
Viewing angle (HxV)	178°/178°	178°/178°	178°/178°	178°/178°	178°/178°
Aspect ratio	16 : 3	16 : 5	16 : 5	16 : 1.6	16 : 1
Light life (typ.)	55000 hrs	55000 hrs	55000 hrs	55000 hrs	55000 hrs
Display orientation	• Landscape/Portrait	• Landscape/Portrait	• Landscape/Portrait	• Landscape/Portrait	• Landscape/Portrait
Touch					
Technology	N/A	N/A	N/A	P-CAP	P-CAP
Resolution (points area function)	N/A	N/A	N/A	16384 x 16384	4096 X 4096
System					
OS	Android 6.0	Android 6.0	Android 6.0	Android 6.0	Android 6.0
System memory	2 GB	2 GB	2 GB	2 GB	2 GB
Storage	32 GB	32 GB	32 GB	32 GB	32 GB
Speakers					
InterN/AI	2 x 1 W	2 x 1 W	2 x 1 W	2 x 1 W	2 x 1 W
System memory	N/A	N/A	N/A	N/A	N/A
3.5 mm line-out	N/A	N/A	N/A	N/A	N/A
Connectivity					
Video input	• HDMI (1.4)	• HDMI (1.4)	• 2 x HDMI (1.4)	• HDMI (1.4)	• HDMI (1.4)
Video output	N/A	N/A	N/A	N/A	N/A
USB	• 2 x Type-A (2.0)	• 2 x Type-A (2.0)	• 4 x Type-A (2.0)	• Type-A (2.0)	• Type-A (2.0)
RJ45	1	1	2	1	1
Control					
RS232	1	1	2	1	1
Power					
Power	AC 100V-240V, 50/60Hz	AC 100V-240V, 50/60Hz	AC 100V-240V, 50/60Hz	AC 100V-240V, 50/60Hz	AC 100V-240V, 50/60Hz
Switch	1	1	1	1	1
Consumption (typ./stby.)	20 W / 0.5 W	38 W / 0.5 W	45 W / 0.5 W	13 W / 0.5 W	18 W / 0.5 W
Physical					
Dimensions (WxHxD)	725.8 x 159.4 x 42.5 mm	946.6 x 314.6 x 42.6 mm	965.0 x 332.0 x 80.0 mm	629.6 x 90.0 x 45.5 mm	905.0 x 89.2 x 45.3 mm
Bezel width (T/B/L/R)	13.2/13.2/13.2/13.2 mm	12.3/12.3/12.6/12.6 mm	14.2/14.2/14.7/14.7 mm	15.5/15.5/15.5/15.5 mm	11.8/11.8/11.8/11.8 mm
Weight (prod./ship.)	4.3 kg / 7.1 kg	8.5 kg / 11.9 kg	13.0 kg / 16.5 kg	3.4 kg / 5.5 kg	3.9 kg / 6.4 kg
VESA mount	400 x 100	400 x 100	On the sides	430 x 60	430 x 60
Environment					
Operating temperature	0°C to 50°C	0°C to 50°C	0°C to 50°C	0°C to 50°C	0°C to 50°C
Storage temperature	-25°C to 60°C	-25°C to 60°C	-25°C to 60°C	-25°C to 60°C	-25°C to 60°C
Usage	24 hours / 7 days	24 hours / 7 days	24 hours / 7 days	24 hours / 7 days	24 hours / 7 days
Software Compatibility					
OSD languages	27	27	27	27	27
DMS	Cloud + Local	Cloud + Local	Cloud + Local	Cloud + Local	Cloud + Local
X-Sign	Yes	Yes	Yes	Yes	Yes
Accessories					
Remote control	1	1	1	1	1
Power cord	6	6	12	6	6
VGA cable	N/A	N/A	N/A	N/A	N/A
HDMI cable	1	1	2	1	1
DP cable	N/A	N/A	N/A	N/A	N/A
RS232 cable	1	1	2	1	1
Quick start guide	1	1	1	1	1
User manual	Online	Online	Online	Online	Online

Video Wall Series

Models	PL4901	PL5501	PL5502
Panel			
Screen Size	49"	55"	55"
Backlight	Direct LED	Direct LED	Direct LED
Active area (WxH)	1074.2 x 604.3 mm	1209.6 x 680.4 mm	1209.6 x 680.3 mm
Resolution	1920 x 1080 pixels	1920 x 1080 pixels	1920 x 1080 pixels
Brightness (typ.)	500 nits	500 nits	500 nits
Contrast ratio (typ.)	1200:1	1200:1	1200:1
Viewing angle (HxV)	178°/178°	178°/178°	178°/178°
Aspect ratio	16 : 9	16 : 9	16 : 9
Light life (typ.)	50000 hrs	50000 hrs	50000 hrs
Display orientation	• Landscape/Portrait	• Landscape/Portrait	• Landscape/Portrait
Touch			
Technology	N/A	N/A	N/A
Resolution (points area function)	N/A	N/A	N/A
System			
OS	N/A	N/A	N/A
System memory	N/A	N/A	N/A
Storage	N/A	N/A	N/A
Speakers			
InterN/AI	2 x 8 W	2 x 8 W	2 x 8 W
System memory	N/A	N/A	N/A
3.5 mm line-out	I	I	I
Connectivity			
Video input	• 2 x HDMI (2.0 x 1, 1.4 x 1) • DisplayPort (1.2) • VGA • DVI	• 2 x HDMI (2.0 x 1, 1.4 x 1) • DisplayPort (1.2) • VGA • DVI	• 2 x HDMI (2.0 x 1, 1.4 x 1) • DisplayPort (1.2) • VGA • DVI
Video output	• DVI	• DVI	• DVI
USB	• Type-A (2.0)	• Type-A (2.0)	• Type-A (2.0)
RJ45	I (LAN command)	I (LAN command)	I (LAN command)
Control			
RS232	I	I	I
Power			
Power	AC 100V-240V, 50/60Hz	AC 100V-240V, 50/60Hz	AC 100V-240V, 50/60Hz
Switch	I	I	I
Consumption (typ./stby.)	150 W / 0.5 W	195 W / 0.5 W	225 W / 0.5 W
Physical			
Dimensions (WxHxD)	1078.4 x 608.5 x 117.4 mm	1213.5 x 684.3 x 122.9 mm	1210.5 x 681.2 x 121.1 mm
Bezel width (T/B/L/R)	2.5/1.0/2.5/1.0 mm	2.3/1.2/2.3/1.2 mm	0.44/0.44/0.44/0.44 mm
Weight (prod./ship.)	23.6 kg / 35.8 kg	28.1 kg / 39.0 kg	23.5 kg / 35.5 kg
VESA mount	600 x 400	600 x 400	600 x 400
Environment			
Operating temperature	0°C to 40°C	0°C to 40°C	0°C to 40°C
Storage temperature	-20°C to 60°C	-20°C to 60°C	-20°C to 60°C
Usage	24 hours / 7 days	24 hours / 7 days	24 hours / 7 days
Software Compatibility			
OSD languages	8	8	8
DMS	Local	Local	Local
X-Sign	Yes	Yes	Yes
Accessories			
Remote control	I	I	I
Power cord	6	6	6
VGA cable	I	I	I
HDMI cable	I	I	I
DP cable	I	I	I
RS232 cable	RJ45 to RS232 + RS232 to USB	RJ45 to RS232 + RS232 to USB	RJ45 to RS232 + RS232 to USB
Quick start guide	I	I	I
User manual	Online	Online	Online

Smart Interactive Signage Series

Models	IL430	IL490	IL550
Panel			
Screen Size	43"	49"	55"
Backlight	Edge LED	Edge LED	Edge LED
Active area (WxH)	941.2 x 529.4 mm	1073.8 x 604.0mm	1209.6 x 680.4 mm
Resolution	1920 x 1080 pixels	1920 x 1080 pixels	1920 x 1080 pixels
Brightness (typ.)	450 nits	450 nits	450 nits
Contrast ratio (typ.)	1100:1	1100:1	1100:1
Viewing angle (HxV)	178°/178°	178°/178°	178°/178°
Aspect ratio	16 : 9	16 : 9	16 : 9
Light life (typ.)	50000 hrs	50000 hrs	50000 hrs
Display orientation	• Landscape/Portrait	• Landscape/Portrait	• Landscape/Portrait
Touch			
Technology	IR	IR	IR
Resolution (points area function)	32767 x 32767	32767 x 32767	32767 x 32767
System			
OS	Android 5.1	Android 5.1	Android 5.1
System memory	2 GB	2 GB	2 GB
Storage	16 GB	16 GB	16 GB
Speakers			
InterN/AI	2 x 10 W	2 x 10 W	2 x 10 W
System memory	N/A	N/A	N/A
3.5 mm line-out	I	I	I
Connectivity			
Video input	• 2 x HDMI (1.4) • DisplayPort (1.1/1.2) • DVI	• 2 x HDMI (1.4) • DisplayPort (1.1/1.2) • DVI	• 2 x HDMI (1.4) • DisplayPort (1.1/1.2) • DVI
Video output	• DVI • DisplayPort (1.1/1.2)	• DVI • DisplayPort (1.1/1.2)	• DVI • DisplayPort (1.1/1.2)
USB	• 2 x Type-A (2.0 / power only) / 1 x Type-B	• 2 x Type-A (2.0 / power only) / 1 x Type-B	• 2 x Type-A (2.0 / power only) / 1 x Type-B
RJ45	I	I	I
Control			
RS232	I	I	I
Power			
Power	AC 100V-240V, 50/60Hz	AC 100V-240V, 50/60Hz	AC 100V-240V, 50/60Hz
Switch	I	I	I
Consumption (typ./stby.)	67 W / 0.5 W	80 W / 0.5 W	94 W / 0.5 W
Physical			
Dimensions (WxHxD)	1002.5 x 590.8 x 91.4 mm	1135.2 x 665.4 x 91.4 mm	1271.0 x 741.8 x 91.4 mm
Bezel width (T/B/L/R)	29.2/29.2/29.2/29.2 mm	29.2/29.2/29.2/29.2 mm	29.2/29.2/29.2/29.2 mm
Weight (prod./ship.)	19.4 kg / 26.0 kg	25.3 kg / 33.3 kg	31.0 kg / 40.5 kg
VESA mount	400 x 400	400 x 400	400 x 400
Environment			
Operating temperature	0°C to 40°C	0°C to 40°C	0°C to 40°C
Storage temperature	-20°C to 60°C	-20°C to 60°C	-20°C to 60°C
Usage	24 hours / 7 days	24 hours / 7 days	24 hours / 7 days
Software Compatibility			
OSD languages	27	27	27
DMS	Cloud + Local	Cloud + Local	Cloud + Local
X-Sign	Yes	Yes	Yes
Accessories			
Remote control	I	I	I
Power cord	7	7	7
VGA cable	I (DVI to VGA)	I (DVI to VGA)	I (DVI to VGA)
HDMI cable	N/A	N/A	N/A
DP cable	N/A	N/A	N/A
RS232 cable	N/A	N/A	N/A
Quick start guide	I	I	I
User manual	Online	Online	Online