

# HERMLE

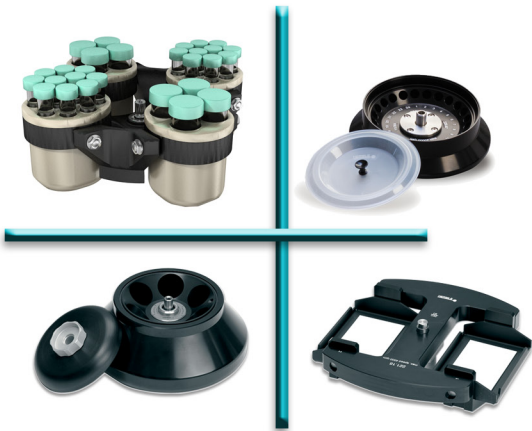
## Benchmark

### Z366 *Series*

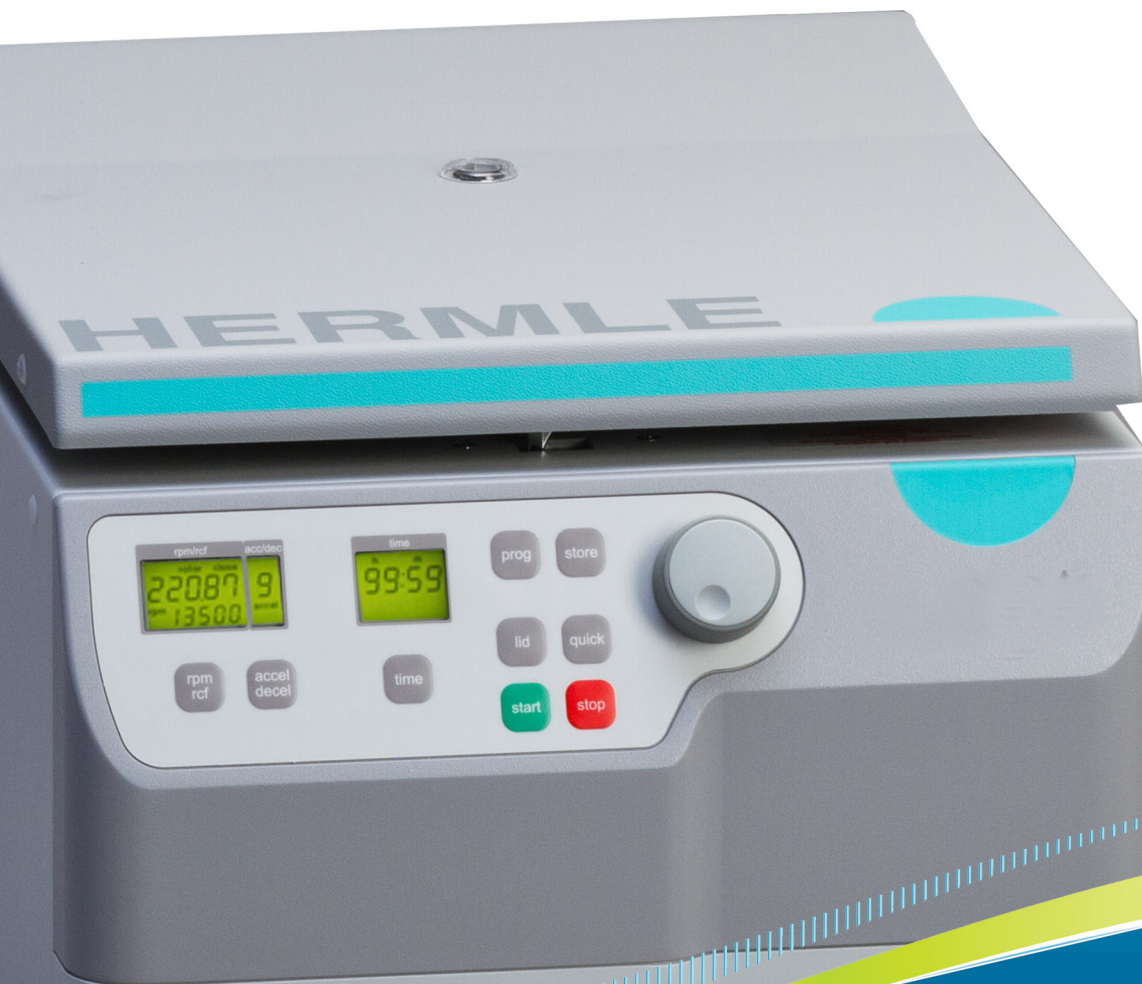
Z366

Z366-K

### Universal Centrifuges



- **Mid-Range capacity**, 4 x 250ml rotor (12x50ml or 28x15ml)
- Advanced programming with auto rotor recognition
- High speed rotors available providing up to 24,000 x g
- Available with refrigeration



**Z366** Universal Centrifuge



**Refrigerated**

**Z366-K** Universal Centrifuge

### Z366 Series Summary

Speed up to 16,000 rpm  
 G-Force up to 24,325 x g  
 Swing Out Capacity:  
 4 x 250 ml  
 12 x 50 ml  
 28 x 15ml  
 6 x microplates  
 Angle Rotor Capacity  
 44 x 1.5/2.0 ml  
 30 x 15 ml  
 10 x 50 ml  
 6 x 250 ml

### Z366 Features

#### Microprocessor Control

- Over-speed protection
- Automatic rotor identification
- Program Storage (99)
- Pre-Cool function (Z366-K only)
- Momentary spin button
- Imbalance detection
- Adjustable Accel/Decel
- Audible end of run alarm

#### Maintenance free induction drive

- Motor driven safety lid-lock
- Quiet operation, less than 62 DB
- Splash proof display
- Powerful Refrigeration (Z366-K only)

### Z366 Specifications

Speed Range: 200 to 16,000 rpm\*  
 Max. RCF: 24,325 x g\*  
 Max Capacity: 4 x 250 ml (Swing out)  
 6 x 250 ml (Angle)  
 Timer: up to 99 hr, 59 min.  
 Dimensions: 17 x 20 x 14.2 in.  
 (W x D x H)  
 43 x 51 x 36 cm.  
 Z366-K 28.3 x 20 x 14.2 in.  
 72 x 51 x 36 cm.  
 Weight: 114 lbs (52 kg)  
 Z366-K 169 lbs (77 kg)  
 Electrical: 120 or 230V, 50/60Hz  
 Power Draw: 520W (Z366-K: 785W)  
 Temp Range: -20° - 40° C  
 (Z366-K only)

\*Max Speed of Z366: 15,000rpm/21,379xg



For applications requiring increased capacity over the Z306 or Z326 series centrifuges, the Z366 series offer a unique “Mid-Range” swing out rotor that accepts a variety of different tubes, including up to 12 x 50ml or 28 x 15ml.

Despite this step up in capacity, the Z366 maintains a surprisingly compact design, with the standard air-cooled model featuring a footprint of 17 x 20 inches.

In addition to the popular 4 x 250ml swing out rotor, a variety of additional rotors are also available. Angled rotors range from a 24 x 1.5ml micro rotor to a high capacity 6 x 250ml rotor. A 6 x 3 position microplate rotor is also available, as well as a 4 x PCR strips (8-strips).

Advanced microprocessor controls allow for instant rotor identification, which automatically converts the rotational speed to the relevant g-force (rcf), preventing the user from setting a speed above the capabilities of the installed rotor. In addition to retrieving saved programs, the easy to use front panel can adjust accel/decels rates, and change the end of run alarm tone.

#### Ordering Information:

Z366\* Z366 Centrifuge (without rotor), 120V  
 Z366-K\* Z366-K Refrigerated Centrifuge (without rotor), 120V

\*115V with US Plug. For 230V (EU Plug), please order -E.

## Universal Swing Out Rotor:



### Item: Z366-250

4 x 250ml Swing Out Rotor

Max Speed: 4,500 rpm / 3,780 x g

Accel: 34 sec. / Decel: 36 sec.



Z366-250-LID

| Inserts:      | Tube                          | qty/<br>insert | qty./<br>rotor |
|---------------|-------------------------------|----------------|----------------|
| Z366-250-A250 | 250ml                         | 1              | 4              |
| Z366-250-A100 | 100ml                         | 1              | 4              |
| Z366-250-A50  | 50ml conical                  | 3              | 12             |
| Z366-250-A15  | 15ml conical                  | 7              | 28             |
| Z366-250-A10  | 10ml                          | 8              | 32             |
| Z366-250-A57  | 5/7ml                         | 14             | 56             |
| Z366-250-LID  | Hermetically Sealed Lid, 2/pk | 1              | 4              |

\*Inserts sold in 2/pk.  
Rotor accepts 4 inserts (2 x 2/pk.)

## Additional Rotors:



### Item: Z366-06250

6 x 250ml Angle Rotor (28°)

Max Speed: 8,000 rpm / 10,016 x g

Accel: 130 sec. / Decel: 92 sec.



### Item: Z326-0685

6 x 85ml Angle Rotor (38°)

Max Speed: 11,000 rpm / 15,555 x g  
(Z366)

Max Speed: 13,000 rpm / 21,726 x g  
(Z366K)

Accel: 85 sec. / Decel: 70 sec.\*



### Item: Z326-0650-HS

6 x 50ml Angle Rotor (26°) Round

Max Speed: 13,000 rpm / 15,869 x g

Accel: 48 sec. / Decel: 49 sec.



### Item: Z326-1050

10 x 50ml Angle Rotor (38°) Conical

Max Speed: 9,000 rpm / 11,771 x g  
(Z366)

Max Speed: 10,500 rpm / 16,022 x g  
(Z366-K)

Accel: 22 sec. / Decel: 23 sec.\*

### Inserts/Adapters

Z366-06250-A15: 3 x 15ml conical

Z366-06250-A50R: 50ml round

Z366-06250-A50: 50ml conical

### Inserts/Adapters

Z326-85-A15R: 15ml round

Z326-85-A15: 15ml conical

Z326-85-A50R: 50ml round

Z326-85-A50: 50ml conical

### Inserts/Adapters

Z326-50-A30: 30ml round

Z326-50-A15R: 15ml (conical or round)

### Inserts/Adapters

Z326-50-A30: 30ml round

Z326-50-A15R: 15ml (conical or round)

Z206-50-A15: 15ml conical

Z206-50-A57: 5-7ml (12-13mm)

Z206-50-A57C: Cushion for 5ml tube

\*Acceleration and deceleration provided for the maximum speed of model Z366.



### Additional Rotors (Continued):



**Item: Z326-2010**

20 x 10ml Angle Rotor (30°)  
 Max Speed: 12,000 rpm / 15,775 x g  
 Accel: 54 sec. / Decel: 47 sec.



**Item: Z326-2420**

24 x 1.5/2.0ml Angle Rotor (40°)  
 Max Speed: 15,000 rpm / 21,379 x g (Z366)  
 Max Speed: 16,000 rpm / 24,325 x g (Z366K)  
 Accel: 25 sec. / Decel: 26 sec.\*



**Item: Z326-2420H**

24 x 1.5/2.0ml Angle Rotor (40°)  
 Hermetically Sealed Lid  
 Max Speed: 15,000 rpm / 21,379 x g (Z366)  
 Max Speed: 16,000 rpm / 24,325 x g (Z366K)  
 Accel: 25 sec. / Decel: 26 sec.\*



**Item: Z326-4420**

44 x 1.5/2.0ml Angle Rotor (32°/55°)  
 Max Speed: 15,000 rpm / 21,128 x g (Z366)  
 Max Speed: 16,000 rpm / 24,039 x g (Z366)  
 Accel: 29 sec. / Decel: 28 sec



**Item: Z326-02MP**

Swing Out Rotor 2 x 3 microplates (90°)  
 Max Speed: 4500 rpm / 2716 x g  
 Accel: 43 sec. / Decel: 38 sec.

**Inserts**

BT1500-A1520: 20 x 1.5ml  
 BT1500-A05: 20 x 0.5ml



**Item: Z326-3015**

30 x 15ml Angle Rotor (35°)  
 Max Speed: 4500 rpm / 2830 x g  
 Accel: 25 sec. / Decel: 20 sec.

**Inserts/Adapters**

C3100-ADP: 5-7ml (12-13mm)

www.hermleUSA.com  
 PH: 908-769-5555 EM: info@benchmarkscientific.com

\*Acceleration and deceleration provided for the maximum speed of model Z366.

### Also Available from Benchmark:

## Z446 Series High Capacity Centrifuges

Swing Out Rotor Accepts up to:

- 56 x 15ml conical tubes
- 28 x 50ml conical tubes
- 12 x microplates

