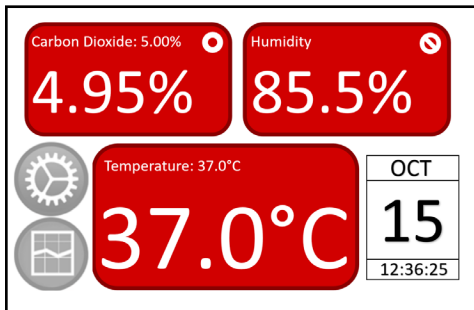


# Incubators & Ovens



# Ovens



**WARNING: DO NOT PLACE COMBUSTIBLE OR FLAMMABLE MATERIALS/SOLVENTS INSIDE OR NEAR THIS OVEN. NOT INTENDED FOR USE IN MELTING PARAFFIN WAX OR ANY OTHER COMBUSTIBLE OR FLAMMABLE MATERIALS AND/OR SOLVENTS.**

## Features

- Double wall construction, glass wool insulation
- Natural air convection
- Bi-metallic thermostats
- Aluminum interior
- Supplied with two adjustable tip-proof zinc plated steel shelves, thermometer (spirit filled)
- Equipped with advanced safety overtemp
- 2 year warranty

## Applications

- Drying glassware and samples
- Annealing
- Dry heat sterilization
- Evaporation
- Product age acceleration
- Polymerizing plastics

## SPECIFICATIONS

Model	107801 and 107801-2	107905 and 107905-2	107800 and 107800-2
Chamber Volume	76.3 liters (2.7 cu.ft)	47.9 liters (1.6 cu.ft)	16.7 liters (0.6 cu.ft)
Max. Operating Temp	215°C	215°C	215°C
Min. Operating Temp	100°C	100°C	100°C
Chamber Dimensions W x D x H	43.2 cm x 37.8 cm x 46.7 cm 17" x 14" x 18 1/2"	35.6 cm x 37.8 cm x 35.6 cm 14" x 15" x 14"	28.6 cm x 24.8 cm x 23.5 cm 11 1/4" x 9 3/4" x 9 1/4"
Overall Dimensions W x D x H	49.2 cm x 47.6 cm x 65.1 cm 19 1/2" x 18 3/4" x 25 1/4"	41.6 cm x 48.3 cm x 53.9 cm 16 1/2" x 19" x 21 1/4"	34.9 cm x 34 cm x 41.9 cm 13 3/4" x 13 1/2" x 16 1/2"
Net Weight	25.4 kg (56 lbs)	21.8 kg (48 lbs)	11.8 kg (26 lbs)
Electrical	107801 - 115 VAC 660 W 107801-2 - 230 VAC 660 W	107905 - 115 VAC 660 W 107905-2 - 230 VAC 660 W	107800 - 115 VAC 660 W 107800-2 - 230 VAC 660 W

# Economy Incubators

These gravity convection models are designed for use in labs that require a reliable and economical method of incubating cultures, test kits, eggs and many other biological. They are ideally suited for use in physicians' offices, clinical, industrial and school laboratories. The gravity convection offers good temperature uniformity and stability.



## Rear Heated Mini Incubator

The Boekel Rear Heated Mini Incubator has the heating element located behind the back panel to reduce the risk of baking samples. Flat digitemp strip on the bottom of the chamber indicates temperature.

### Ordering Information

Part No.	Size	Electrical	Door Style
260700	0.1 cu. ft.	115 volt/50-60 Hz	See-thru
260700-2	0.1 cu. ft.	230 volt/50-60 Hz	See-thru



## Boekel Analog Incubator

Ideal for school laboratories and as a backup incubator for hospitals, the economy model offers superior value for a wide range of routine applications.

### Ordering Information

Part No.	Size	Electrical	Door Style
132000	0.8 cu. ft.	115 volt/50-60 Hz	See-thru
132000-2	0.8 cu. ft.	230 volt/50-60 Hz	See-thru



## Boekel Digital Incubator

Ideal for school laboratories and as a backup incubator for hospitals, the economy model features an LCD temperature display which can be easily seen throughout the laboratory.

### Ordering Information

Part No.	Size	Electrical	Door Style
133000	0.8 cu. ft.	115 volt/50-60 Hz	Solid
133000-2	0.8 cu. ft.	230 volt/50-60 Hz	Solid

## SPECIFICATIONS

Model	260700	132000	133000
Chamber Volume	0.1 cu. ft.	0.8 cu. ft.	0.8 cu. ft.
Chamber Dimensions (in.) W x D x H (cm)	7-14/ x 5-1/4 x 6-3/4 18.4 x 13.3 x 17.1	11-1/2 x 12 x 10-1/2 29.2 x 30.5 x 26.7	11-1/2 x 12 x 10-1/2 29.2 x 30.5 x 26.7
Temperature Range	Ambient +5°C to 42°C	Ambient +5°C to 60°C	Ambient +5°C to 60°C
Stability @ 37°C	-	±3°C	±3°C
Uniformity @ 37°C	-	±1°C	±1°C
Shelves Included	-	2	2
Max. No. Shelves*	-	4	4
Shelf Area	-	1.7 ft. 2	1.7 ft. 2
Dimensions (in.) W x D x H (cm)	7-3/4 x 7-1/4 x 6-1/4 19.7 x 18.4 x 15.9	13 x 14 x 16-1/4 33 x 35.6 x 41.3	13 x 14 x 16-1/4 33 x 35.6 x 41.3
Shipping Weight	8 lbs./3.6 kg	22 lbs./10 kg	22 lbs./10 kg
Regulatory Approval	115V 50-60 Hz 230V 50-60 Hz	UL/CSA - 115V 50-60 Hz UL/CE - 230V 50-60 Hz	UL/CSA - 115V 50-60 Hz UL/CE - 230V 50-60 Hz



## Forced Air Analog Incubators

The Boekel line of Forced Air Analog Incubators are manufactured in the US from 22 Ga steel, and the exterior is powder coated for scratch and stain resistance. The interior is constructed of easy-to-clean aluminum.

The 2.5 and 5.0 cubic foot incubators both have an electrical outlet to provide safe operation of shakers, stirrers, or rotators.

Available in four sizes from 0.5 to 5.0 cu. ft. chambers. All analog incubators come with a thermometer as a standard accessory and have at least one adjustable shelf.

Depending on chamber size, several removable or adjustable shelves are also available.

The Boekel Forced Air Analog Incubators utilize a hydraulic thermostat for control of temperature and a separate on/off switch.

Ideal for a wide range of applications including culturing, bacteriology, warming of samples, E. coli tests, diagnostic protocols for water, wastewater, food and beverage testing, as well as clinical, cosmetics, pharmaceutical, and biotech testing. These robust incubators are designed for use in universities and schools with biology and microbiology labs...

### SPECIFICATIONS

Model	1.4	2.5	5.0
Chamber Volume	1.4 cu. ft.	2.5 cu. ft.	5.0 cu. ft.
Chamber Dimensions (in.) W x D x H (cm)	13-1/2 x 13-1/2 x 13-1/2 34.3 x 34.3 x 34.3	17 x 17 x 15 43.2 x 43.2 x 38.1	17 x 17 x 30 43.2 x 43.2 x 76.2
Temperature Range	Ambient +10°C to 90°C	Ambient +10°C to 90°C	Ambient +10°C to 90°C
Stability @ 37°C	±1°C	±1°C	±1°C
Uniformity @ 37°C	±1.5°C	±1.5°C	±1.5°C
Shelves Included	2	2	3
Max. No. Shelves*	4	5	6
Shelf Area	1.26 ft.2	2.0 ft.2	2.0 ft.2
Dimensions (in.) W x D x H (cm)	15-1/8 x 19 x 19-1/2 38.4 x 48.3 x 49.5	19-1/8 x 23 x 21 48.6 x 58.4 x 53.3	19-1/8 x 23 x 36 48.6 x 58.4 x 91.4
Shipping Weight	36 lbs./16.3 kg	47.5 lbs./21.5 kg	74 lbs./33.6 kg
Regulatory Approvals	UL/CSA - 115V 50-60 Hz CE Marked - 230V 50-60 Hz	UL/CSA - 115V 50-60 Hz CE Marked - 230V 50-60 Hz	UL/CSA - 115V 50-60 Hz CE Marked - 230V 50-60 Hz





## 1.4 Analog Incubator

### Ordering Information

Part No.	Size	Electrical	Door Style
139200	1.4 cu. ft.	115 volt/50-60 Hz	Solid
139200-2	1.4 cu. ft.	230 volt/50-60 Hz	Solid



## 2.5 Analog Incubator

### Ordering Information

Part No.	Size	Electrical	Door Style
139300	2.5 cu. ft.	115 volt/50-60 Hz	Solid
139300-2	2.5 cu. ft.	230 volt/50-60 Hz	Solid



## 5.0 Analog Incubator

### Ordering Information

Part No.	Size	Electrical	Door Style
139400	5 cu. ft.	115 volt/50-60 Hz	Solid
139400-2	5 cu. ft.	230 volt/50-60 Hz	Solid
139425	5 cu. ft.	115 volt/50-60 Hz	See-thru
139425-2	5 cu. ft.	230 volt/50-60 Hz	See-thru



## Forced Air Digital Incubators

Boekel Scientifics line of Forced Air Digital Incubators feature either see-thru polycarbonate doors or solid doors for convenience.

Available in either 115 or 230 volt options, the incubators are produced from 22 Ga steel and the exterior is powder coated for both scratch and stain resistance. The interior is easy-to-clean aluminum.

This system allows for digital input and readout of incubation temperature. An over-temp safety thermostat with a red warning indicator light is standard on all units.

All Forced Air Digital Incubators utilize a PID controller and a separate power switch and include a pocket size digital laboratory timer.

The 2.5 and 5.0 cubic foot incubators both have an electrical outlet to provide safe operation of shakers, stirrers, or rotators.

Boekel Forced Air Digital Incubators are ideal for incubating and culturing of reagents, medias, and samples in just about every laboratory, in every market where samples need warming and a steady temperature..

### SPECIFICATIONS

Model	0.5	1.4	2.5
Chamber Volume	0.5 cu. ft.	1.4 cu. ft.	2.5 cu. ft.
Chamber Dimensions (in.) W x D x H (cm)	9-1/2 x 9-1/2 x 9-1/2 24.1 x 24.1 x 24.1	13-1/2 x 13-1/2 x 13-1/2 34.3 x 34.3 x 34.3	17 x 17 x 15 43.2 x 43.2 x 38.1
Temperature Range	Ambient +10°C to 90°C	Ambient +10°C to 90°C	Ambient +10°C to 90°C
Stability @ 37°C	±0.5°C	±0.5°C	±0.5°C
Uniformity @ 37°C	±0.7°C	±0.7°C	±0.7°C
Shelves Included	1	2	2
Max. No. Shelves*	3	4	5
Shelf Area	0.63 ft.2	1.26 ft.2	2.0 ft.2
Dimensions (in.) W x D x H (cm)	11-5/8 x 15-1/2 x 15-1/2 29.5 x 39.4 x 39.4	15 1/8 x 19 x 19 1/2 38.4 x 48.3 x 49.5	19 1/8 x 23 x 21 48.6 x 58.4 x 53.3
Shipping Weight	24 lbs./10.9 kg	36 lbs./16.3 kg	47.5 lbs./21.5 kg
Regulatory Approvals	UL/CSA - 115V 50-60 Hz CE Marked - 230V 50-60 Hz	UL/CSA - 115V 50-60 Hz CE Marked - 230V 50-60 Hz	UL/CSA - 115V 50-60 Hz CE Marked - 230V 50-60 Hz



## 0.5 Digital Incubator

### Ordering Information

Part No.	Size	Electrical	Door Style
138000	0.5 cu. ft.	115 volt/50-60 Hz	Solid
138000-2	0.5 cu. ft.	230 volt/50-60 Hz	Solid
138025	0.5 cu. ft.	115 volt/50-60 Hz	See-thru
138025-2	0.5 cu. ft.	230 volt/50-60 Hz	See-thru



## 1.4 Digital Incubator

### Ordering Information

Part No.	Size	Electrical	Door Style
138200	1.4 cu. ft.	115 volt/50-60 Hz	Solid
138200-2	1.4 cu. ft.	230 volt/50-60 Hz	Solid
138225	1.4 cu. ft.	115 volt/50-60 Hz	See-thru
138225-2	1.4 cu. ft.	230 volt/50-60 Hz	See-thru



## 2.5 Digital Incubator

### Ordering Information

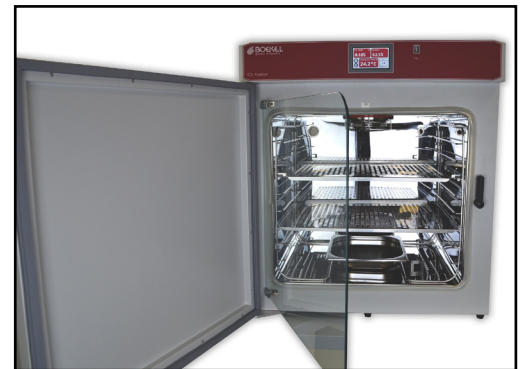
Part No.	Size	Electrical	Door Style
138325	2.5 cu. ft.	115 volt/50-60 Hz	See-thru
138325-2	2.5 cu. ft.	230 volt/50-60 Hz	See-thru

# GEN2 CO<sub>2</sub> Incubator



Boekel Scientific's new touch screen CO<sub>2</sub> Incubator was designed to be ideal for stationary, spinner, and shaker cell culture. The polished stainless interior is easy to clean, and the control system can maintain the perfect environment for mammalian or insect cultures. The air jacketed heating system and double door design ensures the perfect environment for research laboratories or production facilities.

The unit has an easily viewable, bright color touch screen that displays alarms, current temperature, set temperature, CO<sub>2</sub> level, CO<sub>2</sub> setpoint, and the humidity level. The user can easily define control programs to automate the CO<sub>2</sub> level, temperature, and control the internal power outlet. The user interface was carefully designed to be intuitive and easily readable. The display can show temperature, humidity, and CO<sub>2</sub> graphs and this data can be downloaded to a USB drive or through an Ethernet connection. The incubator is ideal for standard cell culture work or flexible experiments. The unit can also add humidity to the chamber with the included humidity pan. Contact your local laboratory equipment distributor or Boekel Scientific directly for more information about this exciting new piece of equipment.



## OVERVIEW

- » Advanced Control System for Custom Temperature & CO<sub>2</sub> programs, Timers, and Alarms
- » Vivid Color Touch Screen That Can Easily Be Viewed from Across the Room
- » Double Door Design with Clear Tempered Glass Viewing Door
- » Internal Power Outlet with Time-Based Control Options
- » Extremely Precise Temperature and CO<sub>2</sub> Control
- » USB and Ethernet Data Ports
- » Two-year Warranty
- » Made in the U.S.A

## Part Number Information

Item	Part Number
Touch Screen CO <sub>2</sub> Incubator Voltage: 120V Includes: Unit, Humidity Pan, 2 Shelves, and Manual	155000
Touch Screen CO <sub>2</sub> Incubator Voltage: 230V Includes: Unit, Humidity Pan, 2 Shelves, and Manual	155000-2
Calibration Kit: Temperature and Humidity Calibration Equipment	155CAL



## LOCATION DETAIL

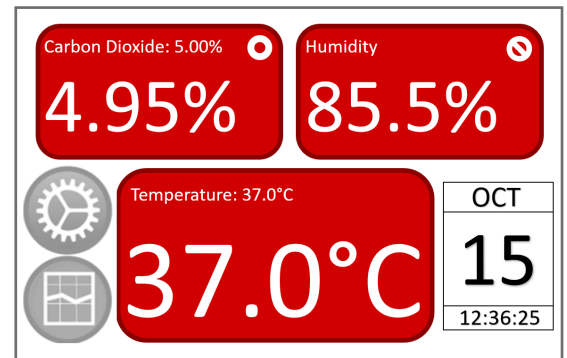
- 1) Heated Double Door Design
- 2) Power Connection & ON/OFF Switch
- 3) Lifting Handles
- 4) Carbon Dioxide Connection
- 5) Ethernet Port
- 6) Color Touch Screen and USB Connector



## SPECIFICATIONS

Item	Description
Touch Screen CO <sub>2</sub> Incubator	Part Number: 155000   115V Part Number: 155000-2   230V
Outer Dimensions	W 25.75" x D 27.50" x H 27.75"
Stackable	Yes, 2 Units
Chamber Capacity	4.0 cu ft 2 Shelves Included
Materials	Painted Steel Exterior Polished Stainless Steel Interior Stainless Steel Shelves
Humidity Method	Stainless Steel Pan
Heating Method	Air Jacketed Resistive Heater Array with Heated Door
Control System	Standard and Advanced control of temperature, CO <sub>2</sub> , and internal out- let. Time based control of setpoints with repeat function. 4 Setpoint Ramp
Alarms	User Settable High & Low Temperature / CO / Humidity Alarm
Timers	User Settable with/without alarm
User Interface	4.3" Color Touch Screen
Temperature Range	25°C - 90°C @ 20°C ambient
Accuracy	+/- 0.20°C @ 37°C
Stability	+/- 0.10°C @ 37°C
Data Acquisition	Screen Graphing, USB Download, Ethernet Communication
Weight	120 lbs
Safety, Electrical, and Regulatory	UL, CE, CSA, and RoHS compliant

## MAIN SCREEN



## DOUBLE DOOR DESIGN



# GEN2 Refrigerated / BOD Incubator



Boekel Scientific's new touch screen Refrigerated Incubator was designed to be the most advanced incubator for microbiologic work. The thermoformed plastic interior is easy to clean, and has a capacity to hold over 80 BOD bottles. Thermoelectric cooling and an advanced control system ensure that this incubator is suitable for most research and environmental laboratories.

The unit has an easily viewable, bright color touch screen that displays alarms, current temperature, and the humidity level. The user can easily control and define temperature programs, alarm setpoints and control the internal power outlet based on time. The user interface was carefully designed to be intuitive and easily readable. The display can show temperature and humidity graphs and this data can be downloaded to a USB drive or through an Ethernet connection. The incubator is ideal for standard microbial work or low temperature work such as BOD testing, drosophila, and extremophile bacteria culture because of the high efficiency thermoelectric cooling. The unit can also add humidity to the chamber with the included humidity pan. Contact your local laboratory equipment distributor or Boekel Scientific directly for more information. about this exciting new piece of



## OVERVIEW

- » Advanced Configurable Control System for Standard and Custom Culture Conditions
- » Vivid Color Touch Screen That Can Easily Be Viewed from Across the Room
- » Thermoelectric Cooling to Support Low Temperature Incubation Processes
- » Internal Power Outlet With Time-Based Control Options
- » USB and Ethernet Data Ports
- » Two-year Warranty
- » Made in the U.S.A

## PART NUMBER INFORMATION

Item	Part Number
Touch Screen Refrigerated Incubator Voltage: 120V Includes: Unit, Humidity Pan, 2 Shelves, and Manual	165000
Touch Screen Refrigerated Incubator Voltage: 230V Includes: Unit, Humidity Pan, 2 Shelves, and Manual	165000-2
Calibration Kit: Temperature and Humidity Calibration Equipment	165CAL

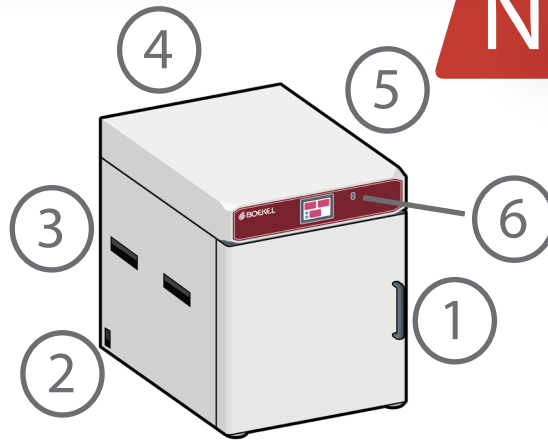
### LOCATION DETAIL

- 1) Large Door Handle
- 2) Power Connection & ON/OFF Switch
- 3) Lifting Handles
- 4) Thermoelectric Cooling
- 5) Ethernet Port
- 6) Color Touch Screen and USB Connector

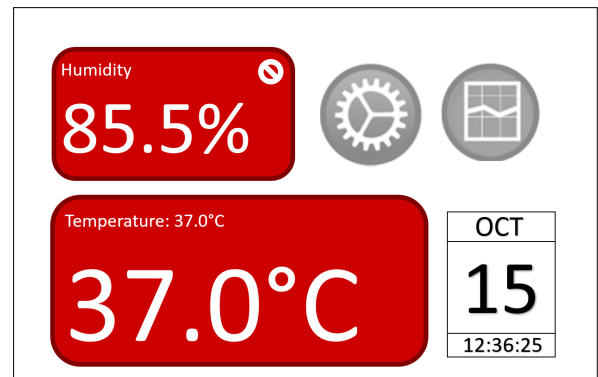
### SPECIFICATIONS

Item	Description
Touch Screen Refrigerated Incubator	Part Number: 165000   115V Part Number: 165000-2   230V
Outer Dimensions	W 25.75" x D 27.50" x H 27.75"
Stackable	Yes, 2 Units
Chamber Capacity	4.0 cu ft - 86 BOD Bottles 2 Shelves Included
Materials	Painted Steel Exterior Thermoformed Plastic Interior Stainless Steel Shelves
Cooling Method	Peltier / Thermoelectric + Fan
Heating Method	Dual Resistive + Fan
Control System	Standard and Advanced control of temperature and internal outlet. Time based control of setpoints with repeat function. 4 Setpoint Ramp
Humidity Method	Stainless Steel Pan
Alarms	User Settable High & Low Temperature / Humidity Alarm
Timers	User Settable with/without alarm
User Interface	4.3" Color Touch Screen
Temperature Range	4°C - 60°C @ 20°C ambient
Accuracy	+/- 0.20°C @ 37°C
Stability	+/- 0.10°C @ 37°C
Data Acquisition	Screen Graphing, USB Download, Ethernet Communication
Weight	105 lbs
Safety, Electrical, and Regulatory	UL, CE, CSA, and RoHS compliant

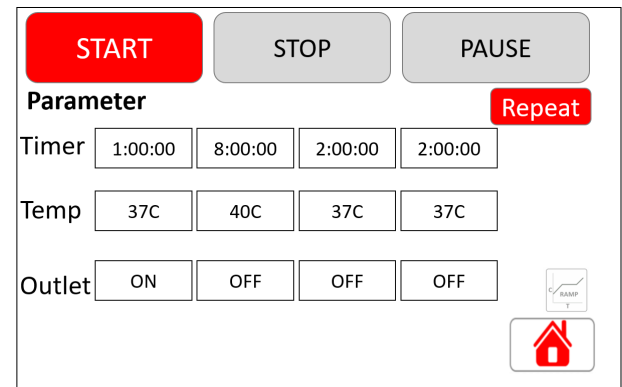
**New**



### MAIN SCREEN



### PROGRAM SCREEN



### THERMOFORMED INTERIOR



## TTT Incubator

Specifically designed for maximum temperature stability and uniformity the TTT incubator or "Tight Temperature Tolerance" incubator uses mechanical convection and an optimized configuration. Ideal for any small sample temperature sensitive process. The TTT incubator includes a removable shelf, a large viewing window and an easy to use digital control system with a configurable alarm and timer.

### SPECIFICATIONS

Model	135000
Chamber Volume	0.34 cu. ft.
Temperature Range	Ambient +8.0°C to 70°C
Stability @ 37°C	±0.2°C
Uniformity @ 37°C	±0.5°C
Shelves Included	1
Stackable	Yes
Chamber Dimen. (in.)	12.0 x 6.0 x 8.0
W x D x H (cm)	30.5 x 15.2 x 20.3
Outside Dimensions	14.0 x 12-1/2 x 12-1/2
W x D x H (cm)	35.6 x 31.8 x 31.8
Shipping Weight	24 lbs./10.9 kg
Regulatory Approval	UL, CSA, CE

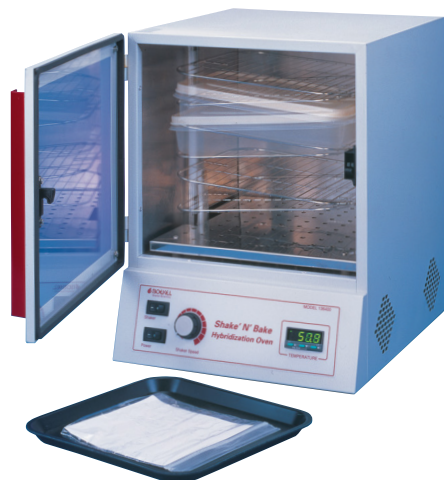


### Ordering Information

Part No.	Size	Electrical	Door Style
135000	0.34 cu. ft.	115 volt/50-60 Hz	See-Thru
135000-2	0.34 cu. ft.	230 volt/50-60 Hz	See-Thru

## Shake 'N Bake Digital Incubator

The Shake 'N Bake Incubator shelves provide a gentle up and down motion which is ideal for hybridization and wash procedures as well as conventional incubations. This unit features a digital temperature setting and display plus a PID temperature controller for rapid heat-up and excellent temperature stability.



\*For accessory shelf information contact Boekel at 800-336-6929 or visit our web site [www.boekelsci.com/incubators](http://www.boekelsci.com/incubators)

### Ordering Information

Part No.	Size	Electrical	Door Style
136400	0.7 cu. ft.	115 volt/50-60 Hz	See-thru
136400-2	0.7 cu. ft.	230 volt/50-60 Hz	See-thru

### SPECIFICATIONS

Model	136400 Shake N' Bake
Chamber Volume	0.7 cu. ft.
Temperature Range	Ambient +5°C to 70°C
Chamber Dimensions (in.)	11-1/2 x 11-1/2 x 10-1/2
W x D x H (cm)	29.2 x 29.2 x 26.7
Dimensions (in.)	12-1/2 x 14-1/4 x 16
W x D x H (cm)	31.8 x 36.2 x 40.6
Stability @ 37°C	±0.5°C at 65°C
Uniformity @ 37°C	±0.5°C
Shelves Included	2
Max No. Shelves*	2
Shelf Area	1.84 ft.2
Rocking Speed	8 to 25 strokes per minute
Max. Shelf Load	1 kg (2-1/4 lb.)
Shipping Weight	28 lbs./12.7 kg
Regulatory Approval	230V CE Marked



855 Pennsylvania Boulevard • Feasterville, PA 19053 USA  
 800-336-6929 • Phone: 215-396-8200 • Fax: 215-396-8264  
 E-mail: [boekel-info@boekelsci.com](mailto:boekel-info@boekelsci.com) • Web site: [www.boekelsci.com](http://www.boekelsci.com)