

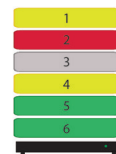
Advancements in Platelet Storage Solutions



Small Platelet Incubator and Agitator
PN:301550 & 301200



Large Platelet Incubator and Agitator
PN:301650 & 301300



#Save_The_Platelets

The most advanced platelet storage system...

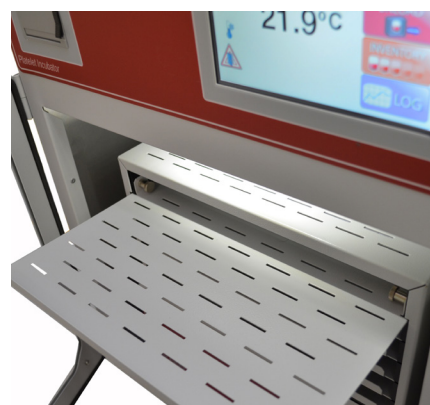
Boekel Scientific offers two advanced platelet storage systems for hospital blood banks and blood centers. These incubators and agitators are specifically designed to support the short term storage needs of blood platelets for human therapeutic use based on the AABB recommendations. These recommendations include temperature and controlled mixing to ensure product quality. The incubators feature a compressor-less design for efficiency and reliability. Among other revolutionary features the incubators also have a patent pending inventory management system to help manage platelet expiration. If you have any questions regarding the Boekel Scientific platelet storage equipment or the Boekel Scientific plasma thawer do not hesitate to call or email customer service



- Onboard inkless printer for documenting temperature control
- Multitude of system alarms to protect the quality of platelets
- Heating and cooling without refrigerant or a compressor
- Massive 7" industrial touch screen with intuitive icons
- Two year warranty & extended warranty available
- Patent pending Inventory Management System
- Battery backup in the event of a power failure
- Downloadable event and temperature log
- LED incubator lighting



process tested agitator



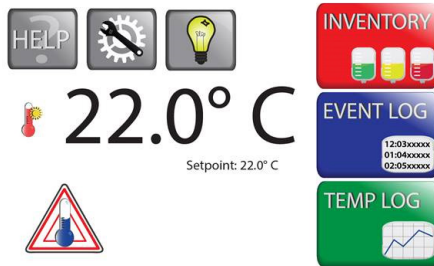
easy-slide removable shelves



easy to use controls

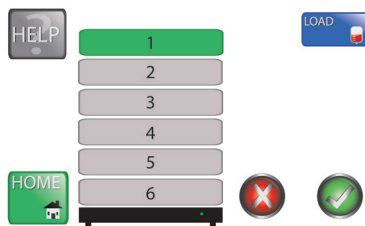
Intuitive Operation

Home Screen

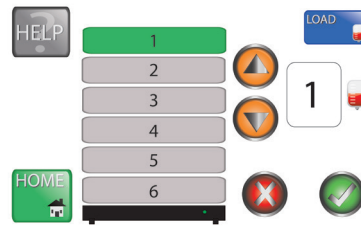


The Home Screen features large easy to recognize icons for loading and unloading platelet bags. The user can also check the system log, turn the light on or enter the help and setup menus. Any system alarms are vividly displayed in color.

Easy Inventory Management - patent pending



The operator selects which shelf the platelets are to be placed.

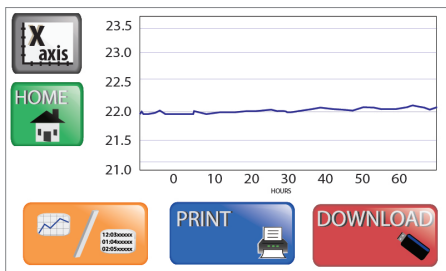


The operator then enters the amount of inventory that is placed on the shelf and the expiration date.

	Time	#Bags
1	00:15:30	2
2	00:15:30	2
3	00:00:00	0
4	01:15:30	3
5	05:15:30	1
6	04:15:30	5

This initiates a color coded countdown timer that alerts the user to the expiration of the platelets. This information is also displayed on the screen saver and the timer is cleared when the inventory is removed.

Downloadable System Logs



- Temperature data is displayed on the screen saver and also in the log screen
- Temperature and system data can be downloaded to a flash drive
- The flash drive port is located on the front of the unit
- The system logs data even in the event of a power failure

On-board printer



- The on-board printer replaces the old recorder chart type temperature loggers
- The paper is easy to change and it will last for months
- A high resolution graph is generated for record keeping
- The printer does not require ink or service
- The printer can print data from one to seven day ranges

Related Equipment: Plasma Thawer

The Boekel Scientific Plasma Thawer is designed for use in Blood Banks and Laboratories where it is required to thaw up to four units of Fresh Frozen Plasma or Cryoprecipitated AHF for future infusion into a patient. This unit utilizes microprocessor temperature control along with agitation to ensure efficient thaw times and each basket has independent controls and alarms which lets the user know when the cycle time is complete.

- Precision temperature controller with audible and visual high temperature alarm
- Two basket design to accommodate up to 4 bags of plasma
- Baskets programed to submerge plasma during the thawing cycle
- Each basket is independently controlled for process flexibility
- Polished stainless steel tank and baskets
- Bacteria resistant powder coated exterior
- Large chamber opening for easy cleaning
- Two year manufacturer's warranty
- Certified to applicable UL and CSA Standards

as shown

Plasma Thawer Part Number: 301000

Accessories (not pictured)

Plasma Thawer Clear Chamber Cover: D1905565

Overwrap Protection: C1905712



Specifications

Item	Small Platelet Agitator and Incubator	Large Platelet Agitator and Incubator	Plasma Thawer
Part Numbers	Agitator: 301200 Incubator:301550	Agitator: 301300 Incubator:301650	301000
Dimensions (W x D x H)	Agitator: 15.8" x 11.3" x 13.63" Incubator: 21.3" x 19.8" x 26.0"	Agitator: 18.5" x 16.5" x 17.5" Incubator: 25.3" x 26.5" x 30.0"	15.8" x 11.3" x 13.63"
Capacity	6 - 12 Apherisis 18 Random	8 - 16 Apherisis 48 Random	4 Bags of Plasma
Weight	Agitator: 37lb Incubator: 55lb	Agitator: 45lb Incubator: 67lb	58lb
Default Set Temperature	22.0°C	22.0°C	36.0°C

Boekel Scientific, 855 Pennsylvania Blvd, Feasterville, PA 19053
www.boekelsci.com | (800) 336-6929

