



Touchboards

BOXLIGHT.
Presenting a Better Way
360.464.2119 | www.boxlight.com

205 Westwood Ave, Long Branch, NJ 07740
Phone: 866-94 BOARDS (26273) / (732)-222-1511
Fax: (732)-222-7088 | E-mail: sales@touchboards.com

1. Package Contents

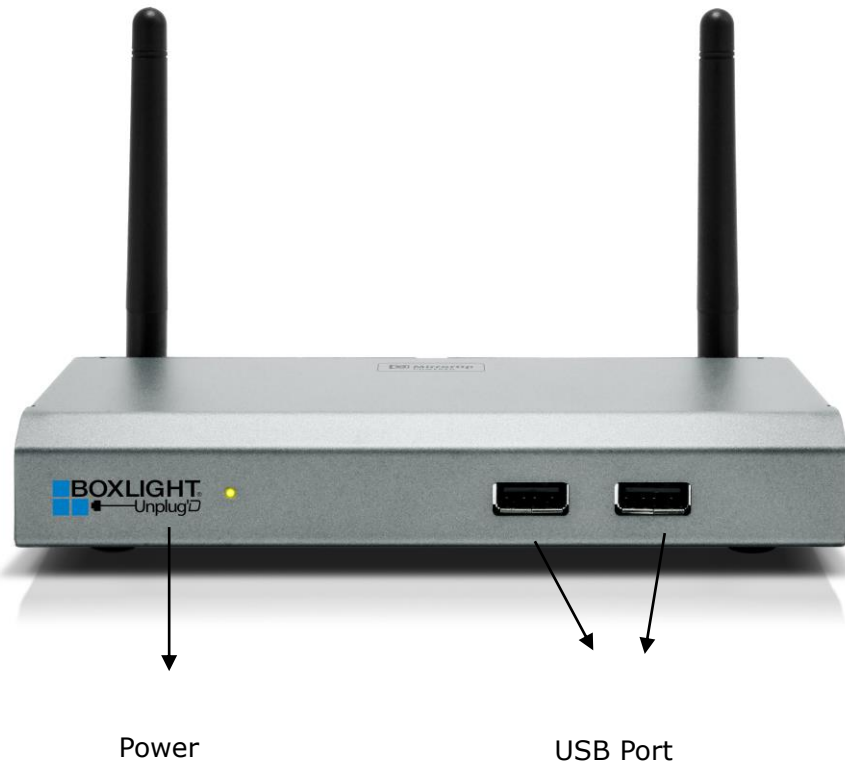
- UNPLUG'D Box
- UNPLUG'D USB Token
- Power Adapter (DC +5V, 2.6A)
- WiFi Antenna x 2
- Wall-mount kit
- Quick Installation Guide
- Warranty Card

2. USB Token Contents

- Windows Installer (UNPLUG'D Windows Installer)
- Mac Installer (UNPLUG'D Mac Installer)
- VAC Driver (For Windows XP Audio Projection)
- VDD Driver (For Windows XP/Vista Virtual Extended Screen)
- USBoIP Driver (For IWB feature)
- User Manual
- UNPLUG'D Execution File
- SVS Driver (For Mac Virtual Extended Screen)
- Utility
 - PtG Converter (For MobiShow PtG function)
 - SNMP Manager (For SNMP Management)

3. Physical Details

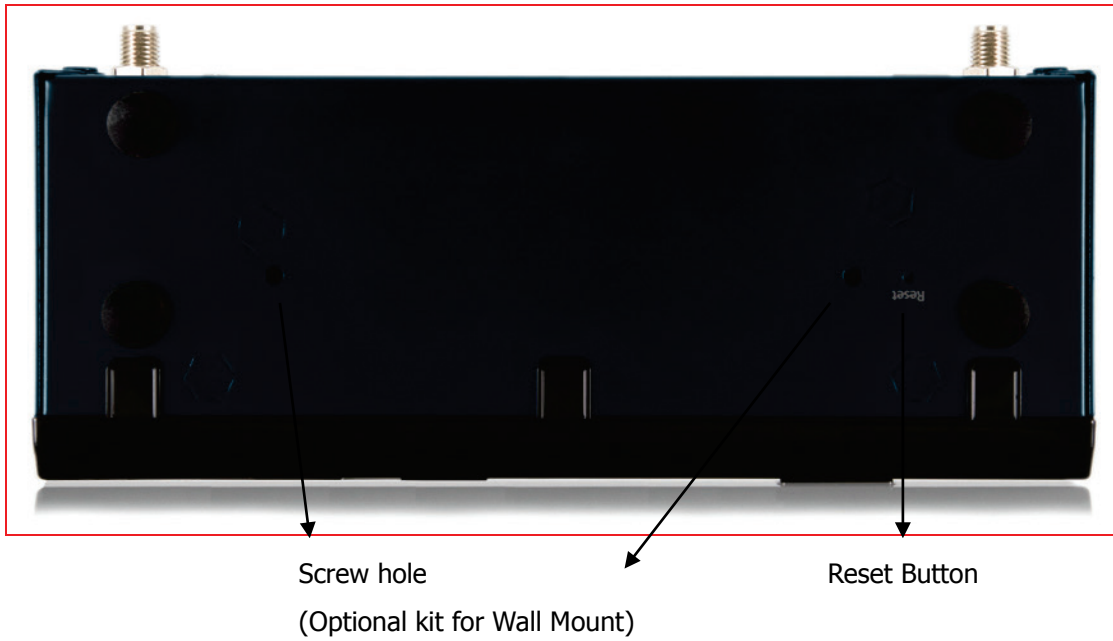
- Front Panel



- Rear Panel



- Bottom Side



Touchboards

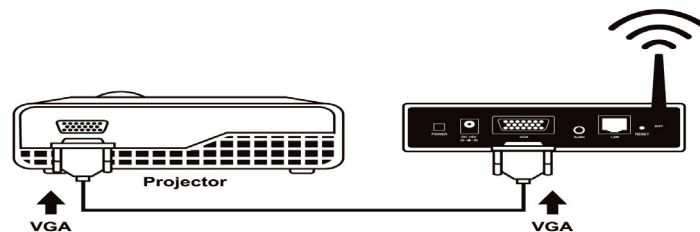
205 Westwood Ave, Long Branch, NJ 07740
Phone: 866-94 BOARDS (26273) / (732)-222-1511
Fax: (732)-222-7088 | E-mail: sales@touchboards.com

4. What You Might Need

- Projector/Display with VGA/HDMI interface
- Windows or Mac PC/Laptop
- Apple iPhone, iPad or iPod-touch device
- Android Phone or Tablet device
- Speaker (Optional, for audio projection feature)
- USB Mouse and Keyboard (Optional, for remote desktop feature)
- USB HID Touch Screen/IWB Device (Optional, for USB over IP feature)

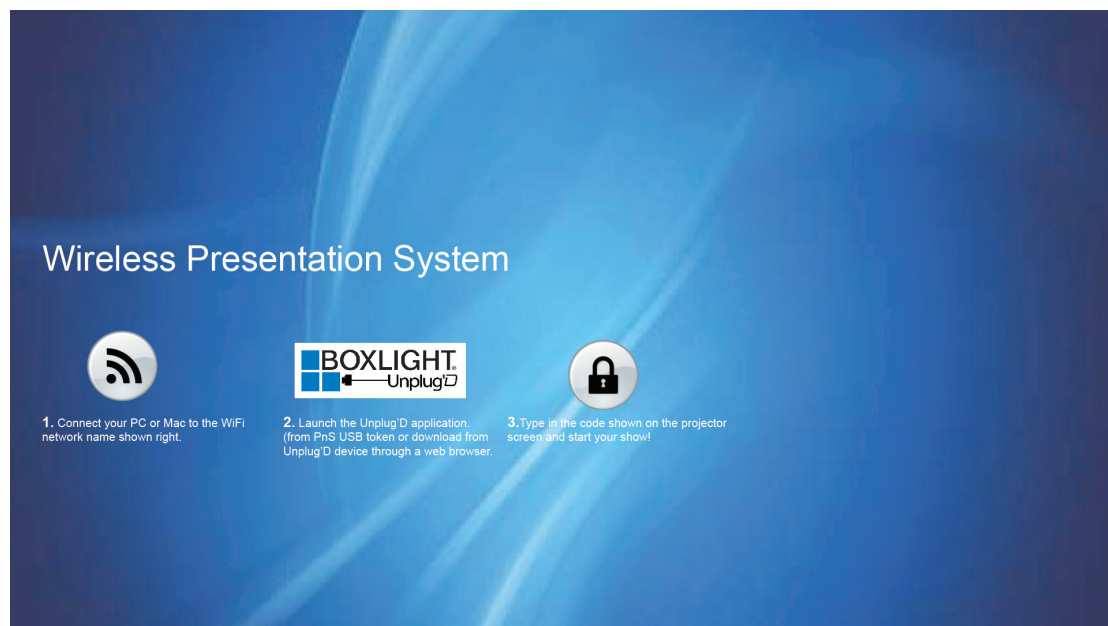
5. UNPLUG'D Quick Installation

- 1) Connect UNPLUG'D device to Projector/Display through VGA/HDMI port and turn on Projector/Display power.



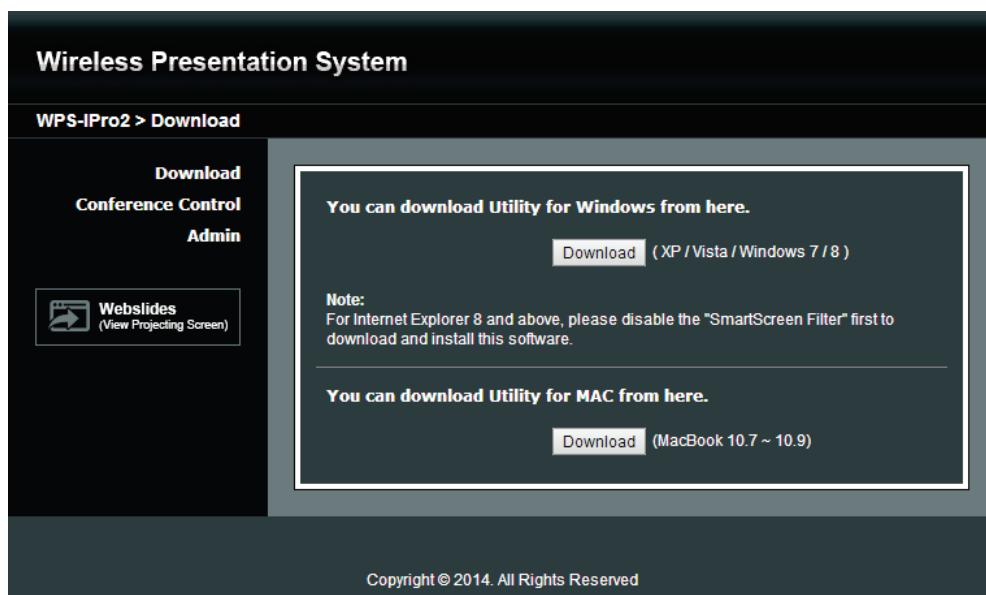
- 2) Connect the power adaptor to UNPLUG'D device and press the power button to turn on UNPLUG'D device. System will be ready when the LED light turns to green.

- ◆ It will show the default standby screen as below when system is ready.

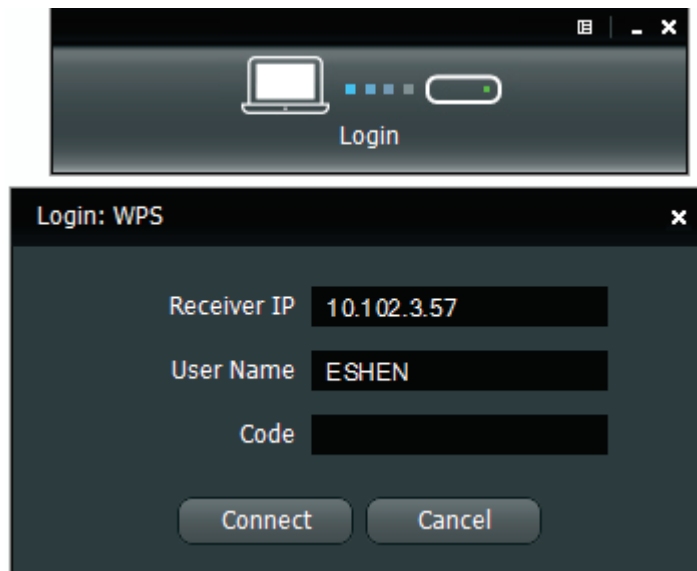



DoWiFi for Windows

- 1) Make sure your PC WiFi is enabled already, and connect your PC to UNPLUG'D box through WiFi.
- 2) Open your browser and enter the Device Host Name (SSID) or IP address in the browser. You can find the IP address and Host Name (SSID) on the projector screen. (Default Host Name (SSID) is UNPLUG'D, Default IP is 192.168.100.10)
- 3) Download the client software for "XP/Vista/Windows 7 / 8" and install on your PC. (You can also launch the application from PnS token directly.)



- 4) Launch UNPLUG'D client and connect to UNPLUG'D receiver.
(Make sure your personal firewall allows UNPLUG'D software to pass through.)
- 5) Enter the **CODE** and you can see the Code on the projector standby screen.



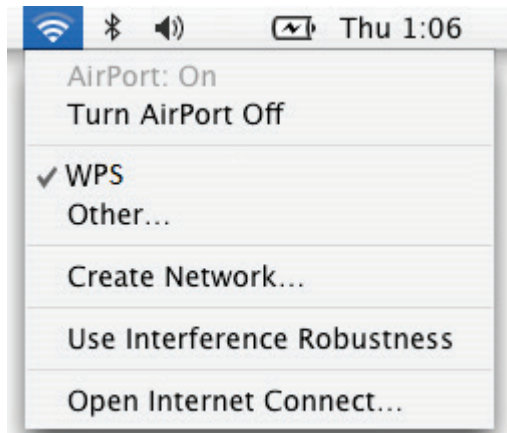
- 6) Click the  button to start full screen projection, or choose one of the numbers (1 to 4) to project to the split screen.



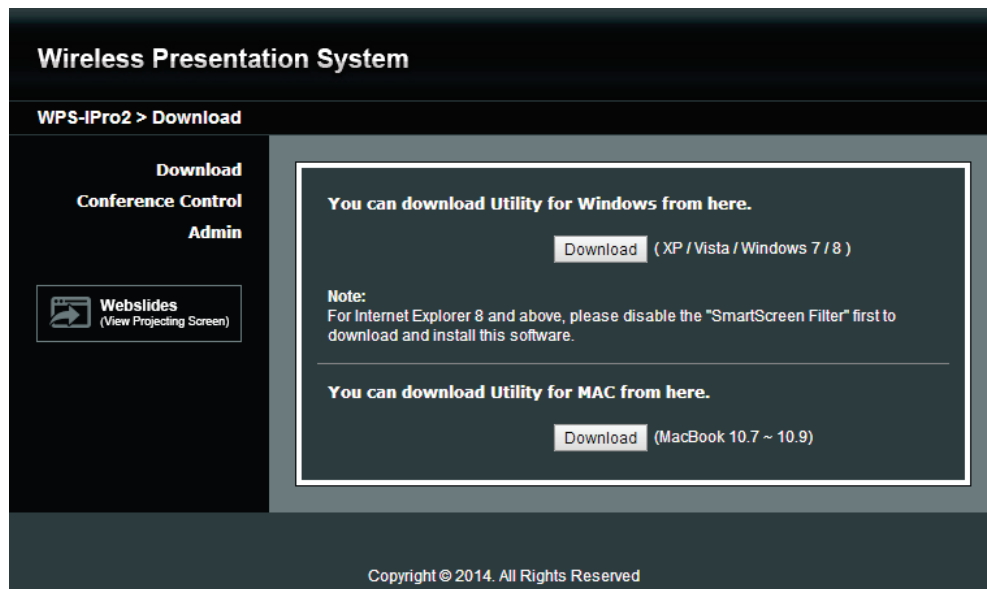
- 7) Connect the USB input devices to UNPLUG'D to select and control the PC/Mac remotely.

6. DoWiFi for Mac

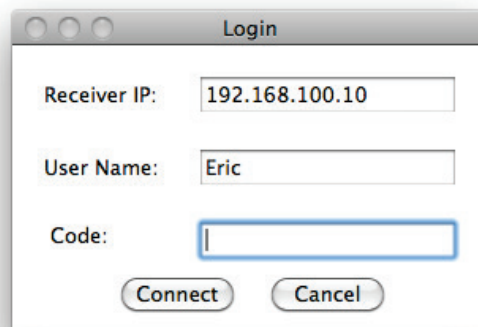
- 1) Enable your WiFi and connect to UNPLUG'D WiFi network.




- 2) Open your browser and enter the Device Host Name (SSID) or IP address on browser. You can find the IP address and Host Name (SSID) on the projector screen. (Default Host Name (SSID) is UNPLUG'D, Default IP is 192.168.100.10)
- 3) Download the client software and run the installer.



- 4) Launch UNPLUG'D software, connect the UNPLUG'D device and enter the Code.



- 5) Click the  button to start full screen projection, or choose one of the numbers (1 to 4) to project to the split screen.



- 6) Connect the USB input devices to UNPLUG'D to select and control the PC/Mac remotely.

Touchboards

205 Westwood Ave, Long Branch, NJ 07740
Phone: 866-94 BOARDS (26273) / (732)-222-1511
Fax: (732)-222-7088 | E-mail: sales@touchboards.com