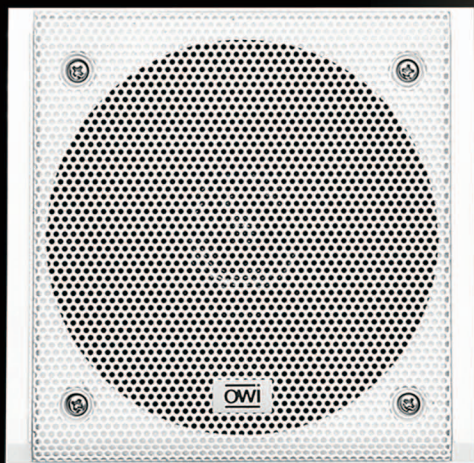


B•S•K

BATHROOM • SHOWER • KITCHEN • MARINE SPEAKERS

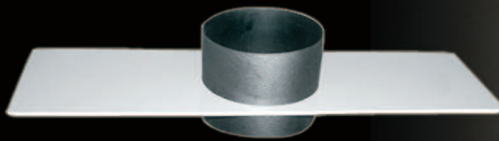


M4F

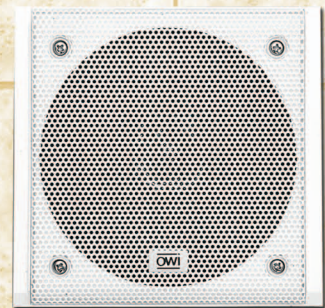


M5CX

- Waterproof
- Available in white
- Patented Back Cover



- New Construction Kit Available



OWI
ESTABLISHED 1978

BSK SPEAKERS

BATHROOM • SHOWER • KITCHEN SPEAKERS

GENERAL SPECIFICATIONS:	M4F FULL RANGE SPEAKER WHITE WATERPROOF	M5CX COAXIAL SPEAKER WHITE WATERPROOF
NOMINAL SIZE:	100mm (4")	135mm (5 1/4")
POWER HANDLING CAPACITY:	Nominal 15W, Max. 30W	Nominal 20W, Max. 40W
NOMINAL IMPEDANCE:	4 Ohms	4 Ohms
MAGNET:	ø70 x ø32 x 8mm, Weight-122g (4.3oz.)	ø80 x ø40 x 10mm, Weight-189g (6.7oz.)
NET WEIGHT:	480g (16.93oz)	615g (21.7oz)
CONE:	Polypropylene Cone	Polypropylene Cone Voice Coil Diameter-ø25mm (Approx. 1")
RESONANT FREQUENCY:	130Hz ± 26Hz (1V)	115Hz ± 17Hz (1V)
FREQUENCY RESPONSE:	70Hz - 18kHz (1W, 50cm)	50Hz - 20kHz (1W, 50cm)
SENSITIVITY:	90dB ± 2dB (300, 400, 500, 600Hz ave.)	94dB ± 2dB (300, 400, 500, 600Hz ave.)
DISPERSION:	120°	110°
HUMIDITY:	To be normal (40 ± 2°C, Hum. 90-95% 48H)	To be normal (40 ± 2°C, Hum. 90-95% 48H)
HEAT TEST:	To be normal (70 ± 2°C, 48H)	To be normal (70 ± 2°C, 48H)
DIMENSIONS: (Approximate Measurements)	Height: 4.57" (116 mm) Width: 4.57" (116 mm) Depth: 1.2" (31 mm)	Height: 5.5" (140 mm) Width: 5.75" (146 mm) Depth: 1.63" (41.5 mm)
HOLE CUT OUT (Approximate)	4 1/32" (102 mm) Diameter	4 15/16" (124 mm) Diameter

Model M4F Patent No. 60108084

Model M5CX Patent No. 60108084

OPTIONAL ACCESSORIES AVAILABLE

M4F-RIK	New Construction Kit for M4F
M5CX-RIK	New Construction Kit for M5CX
25WP-VC	Waterproof Volume Control, 25W, Impedance Matching
2570-TR	25V/70V Transformer, .6, 1.25, 2.5, 5, 10 Watt, 4/8 Ohms
725-TR	70V Transformer 5, 10, 15, 20, 25 Watt, 4/8 Ohms



205 Westwood Ave, Long Branch, NJ 07740
Phone: 866-94 BOARDS (26273) / (732)-222-1511
Fax: (732)-222-7088 | E-mail: sales@touchboards.com