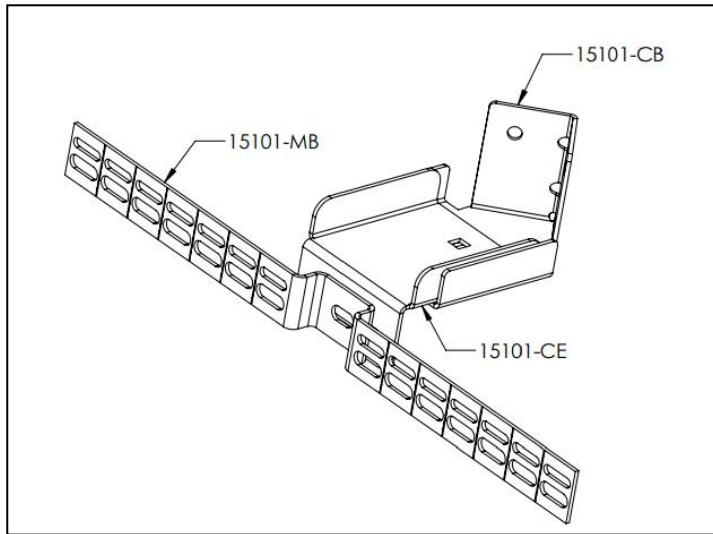


CWB-15101 Instruction sheet

Thank you for using BUD's corner mounting bracket.

NOTE: This product is designed to help mount any of BUD Plastic and Aluminum diecast enclosures from 3" up to 14" wide, and up to a total of 25 Lb.

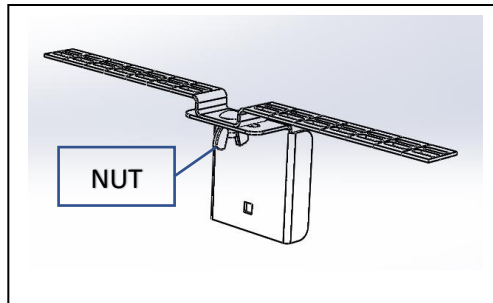


CWB-15101 kit includes:

Qty	part
1	15101-CB
1	15101-CE
1	15101-MB
2	1/4"-20 X 1/2" CARRIAGE BOLT
2	1/4"-20 X 1/2" WING NUT
2	#8X2" DRYWALL SCREWS
1	INSTRUCTION SHEET

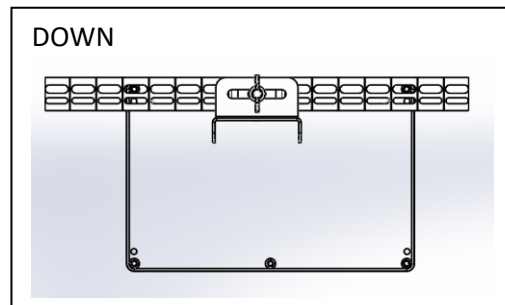
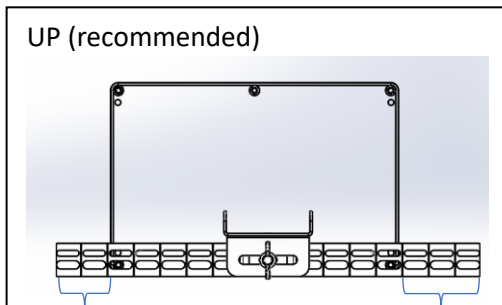
Assembly:

1. start with connecting the mounting tray (15101-CE) to the enclosure mounting strip (15101-MB) using one of the 1/4" carriage bolts and one 1/4" wing nut paying attention to place the nut on the tray side.

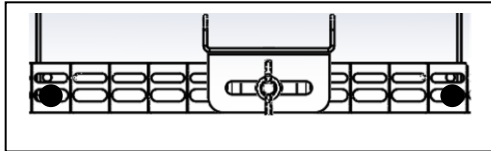


2. with the enclosure mounting surface up (so mounting holes are visible), place the mounting strip you have just assembled on the mounting surface so the carriage bolt is near the middle of the enclosure mounting edge. based on the mounting screws size, align either the narrow or wide slots with the mounting holes in the enclosure (you may need to flip the mounting strip so it is always overlapping with the enclosure and not hanging down). **The matching holes may shift the center of the strip off the center of the enclosure.**

NOTE: The enclosure can be mounted upword or downword from the bracket.

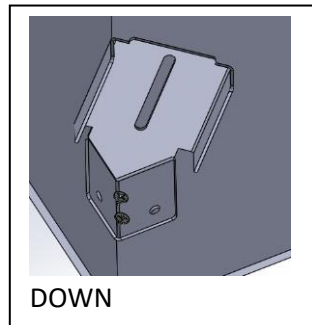
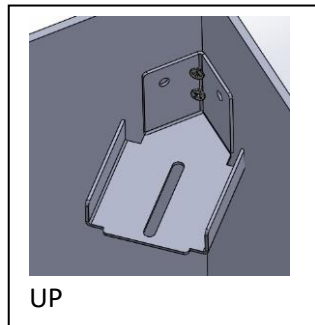


3. Assemble 2 enclosure mounting screws (not supplied) to secure the strip to the enclosure, and use your hand to break off any parts of the strip that are sticking out of the sides of the enclosure.

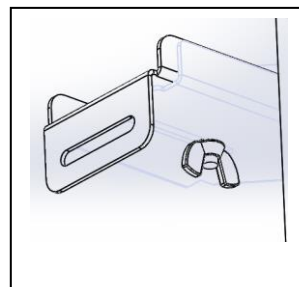
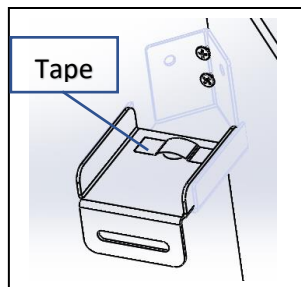


4. Mount the corner bracket (15101-CB) onto a corner of two walls using the 2 supplied #8 x 2" drywall screws according to the mounting orientation you have chosen (the bracket should overlap with the enclosure back) . with heavy enclosures it is recommended to use the additional holes in the bracket.

NOTE: you should leave room to have hand access the bottom (flat) side of the corner bracket while doing the final mounting of the enclosure.

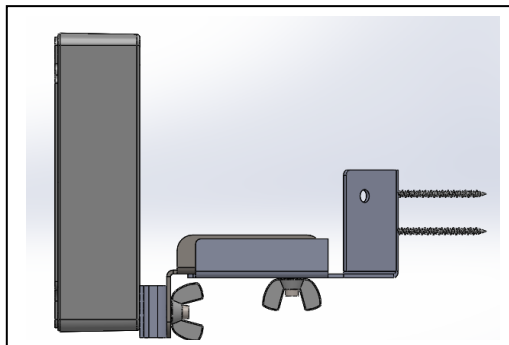


5. drop the 1/4" carriage bolt in the square hole in the tray (it is recommended to use a piece of tape over the bolt's head to temporary keep it from moving up) and assemble the tray to the corner bracket using one one 1/4" wing nut, paying attention to place the nut on the corner bracket side.



6. Adjust to desired distance from the walls.

Assembly of the corner bracket is done.



These instructions can be viewed on Bud Industries website at :"<https://www.budind.com/wp-content/uploads/CWB-15101-Instruction-sheet.pdf>"