

# CTM-MS1

Tilting Mount for Flat-Panels up to 160 lb./73 kg

LIST \$168.00	Color: Black
Weight	19.00 lb.   8.6 kg
Weight Cap. per Head	160 lb.   72.6 kg
Width	20.54 in.   522 mm
Height	15.50 in.   393.7 mm
Depth	2.45 in.   62.23 mm
Mounting Pattern	100 x 100 (Min) - 490 x 360 (Max) mm
Tilt	+12.00°

Downloads at Mounts.com



[Data Sheet](#)



[Bid Specification Document](#)



160 lb.



+15.50



+12.00°



2.45 in



100 x

100 min.



490 x

360 max.

## DESCRIPTION

The CTM-MS1 mounts to walls, floor stands, carts and ceiling adapters. The universal tilting mount feature patented Griplates™ (US Patent number 8,035,757 B2), which hold the flat-panel display permanently in the desired position. The patented Clevis tilting mechanism allows 12° of continuous tilt and built-in lateral shift makes precise alignment effortless.

## FEATURES

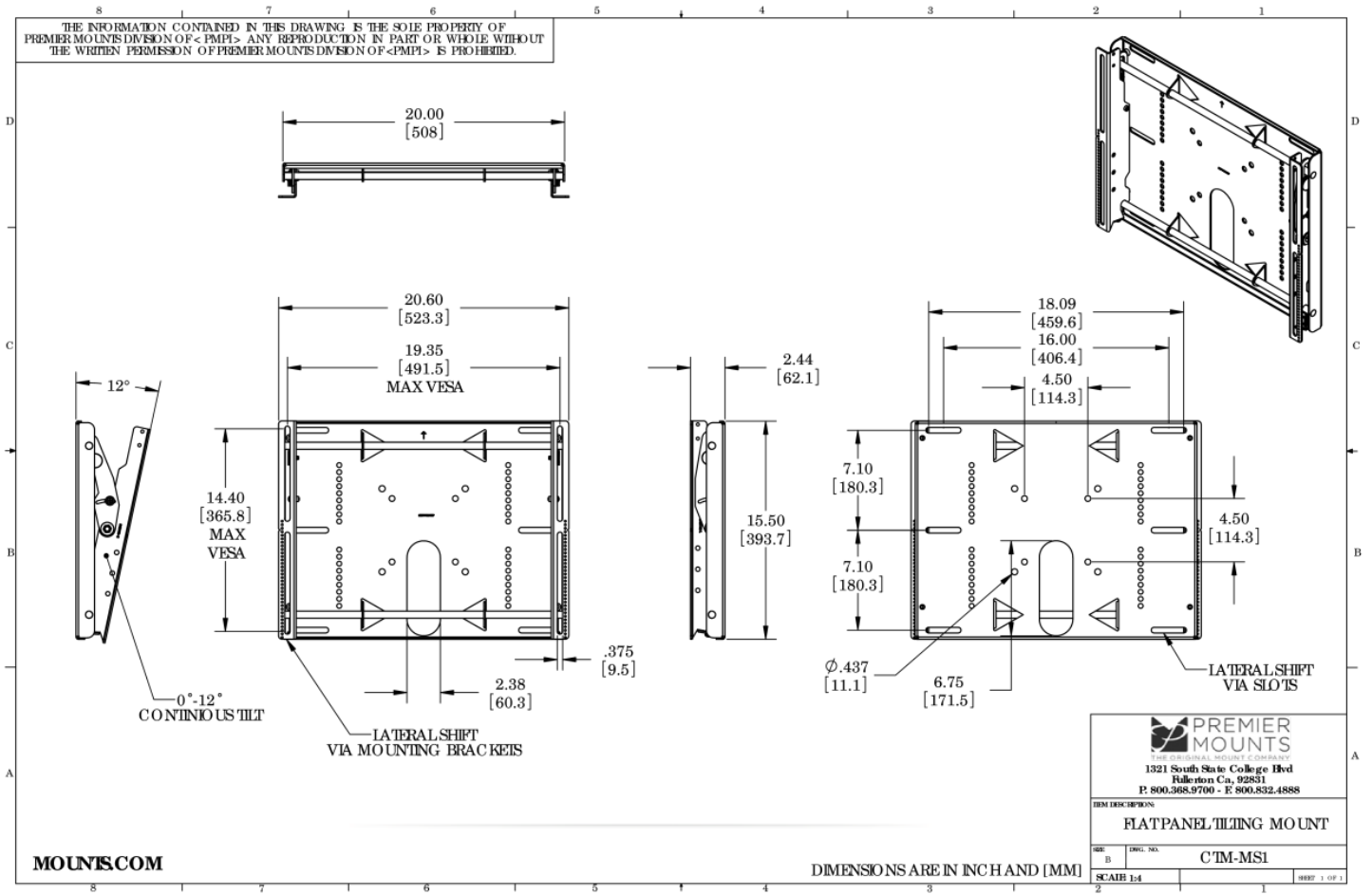
- Mounts to walls, floor stands, carts and ceiling adapters
- Features patented Clevis technology for effortless tilt
- Lateral shift for precise vertical alignment
- Mounts to studs at 16 in. and 18 in. spacing
- Durable, textured powder coat finish
- Twelve degrees of continuous tilt
- Patented Griplates™ (US Patent number 8,035,757 B2) support flat-panel displays and hold the display tight on the mounting brackets



# CTM-MS1

Tilting Mount for Flat-Panels up to 160 lb./73 kg

DOWNLOAD FULL SIZE CAD FILES AND DIMENSIONAL DRAWINGS AT MOUNTS.COM



# Touchboards

205 Westwood Ave, Long Branch, NJ 07740  
 Phone: 866-94 BOARDS (26273) / (732)-222-1511  
 Fax: (732)-222-7088 | E-mail: sales@touchboards.com

PREMIER MOUNTS