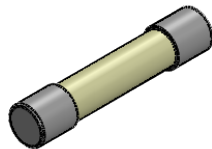


THIS IS ISSUED IN STRICT CONFIDENCE THAT IT IS NOT USED AS A BASIS FOR MANUFACTURE OR SALE AND THAT IT IS NOT COPIED, REPRINTED OR DISCLOSED TO A THIRD PARTY EITHER WHOLLY OR IN PART WITHOUT THE PRIOR WRITTEN CONSENT OF CAL TEST ELECTRONICS, INC.

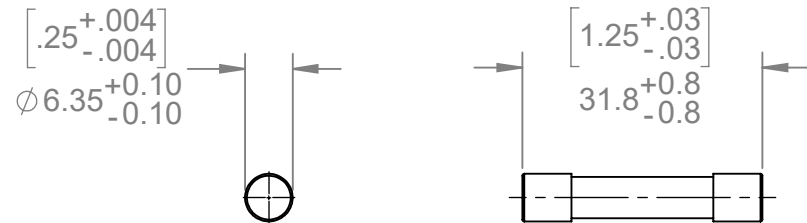
NOTES:

1. MATERIAL:  
TUBE BODY: CERAMIC (NON-TRANSPARENT)  
CAP: BRASS, NICKEL PLATED  
ELEMENT: METAL WIRE  
FILLER: QUARTZ SAND
2. SPECIFICATIONS:  
RATED VOLTAGE: 1,000 V AC / DC  
RATED CURRENT: SEE PART NUMBER TABLE  
FUSING TIME LIMIT:  
4 In: 60 ms MAX.  
10 In: 6 ms MAX.  
BREAKING CAPACITY: 50 KA MIN.  
OPERATING TEMPERATURE: -55°C TO +125°C
3. UL AND / OR TUV RECOGNIZED
4. RoHS 2 COMPLIANT; EXEMPTION ANNIX III 6(c)
5. WEIGHT:  
INDIVIDUAL: 1.2 g/pc



ISOMETRIC VIEW

REVISIONS			
REV.	DESCRIPTION	DATE	APPROVED
-	CLASS A RELEASED	3/14/18	
A	REVISED NOTE 2. BREAKING CAPACITY WAS 10 KA MIN. CONVERTED TO SW FORMAT	1/17/2019	
B	ADDED 2.0 A FUSE TO MODEL NUMBER TABLE	7/18/2019	



CT4049-2.0A	2.0 A	-
CT4049-1.5A	1.5 A	-
CT4049-1.0A	1.0 A	-
CT4049-0.5A	0.5 A	-
MODEL NUMBER	CURRENT RATING	NOTES / REFERENCE
MODEL NUMBER TABLE		

**METRIC**

UNLESS OTHERWISE SPECIFIED DIMENSIONS ARE IN MILLIMETERS TOLERANCES ARE:  
PER DIN ISO 2768m

PROJECT NO.  
**C306**

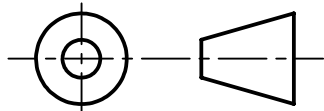
**Cal Test Electronics** 22820 Savi Ranch Parkway  
Yorba Linda, CA 92887

THIRD ANGLE PROJECTION

DO NOT SCALE DRAWING

APPROVALS	DATE
DRAWN WDH	3/14/2018
CHECKER B.Hansen	3/14/2018

TITLE  
**FUSE, MINATURE, CERAMIC, 6X32,  
1000 V, VERY FAST-ACTING**



TREATMENT  
NONE

ENGR.

FINISH  
NONE

DESIGN ACTIVITY

SIZE <b>A</b>	CAGE CODE <b>43F45</b>	DWG. NO. <b>P404900</b>	REV. <b>B</b>
SCALE 1:1	SHEET 1 OF 1		