

THIS IS ISSUED IN STRICT CONFIDENCE THAT IT IS NOT USED AS A BASIS FOR MANUFACTURE OR SALE AND THAT IT IS NOT COPIED, REPRINTED OR DISCLOSED TO A THIRD PARTY EITHER WHOLLY OR IN PART WITHOUT THE PRIOR WRITTEN CONSENT OF CAL TEST ELECTRONICS, INC.

| REVISIONS | | | |
|-----------|--|-----------|-----------|
| REV. | DESCRIPTION | DATE | APPROVED |
| A | INITIAL RELEASE | 6/2/2021 | |
| B | ITEM 1 UPDATED TO V4.3. | 6/23/2021 | |
| C | DRAWING UPDATED TO NEW B SIZE FORMAT; DWG. NO. WAS P445000; MDP BODY UPDATED TO V4.3.1 | 11/3/2021 | B. HANSEN |
| D | DIM 52.9 WAS 52.6; NOTE 1, ADDED 22 AWG (19X34); DELETED Ø3.5; NOTE 3, VOLTAGE WAS 300 VRMS; ADDED CURRENT; NOTE 5, ADDED CE MARKED. | 6/8/2022 | B. Hansen |

NOTES:

1. ALL SPECIFICATIONS SUBJECT TO CHANGE WITHOUT NOTICE

2. MATERIAL:

- MDP CONNECTOR -
 - MOLDED BODY: POLYPROPYLENE (PP), BLACK.
 - 4mm BANANA PLUGS -
 - BODY: BRASS, NICKEL PLT.
 - CAGE CONTACT: BECU, NICKEL PLT.
- RG58C/U COAX CABLE -
 - JACKET: PVC, BLACK; Ø4.95 O.D.
 - DIELECTRIC: PE
 - CENTER CONDUCTOR: 22 AWG (19X34) TINNED COPPER, STRANDED.
- BNC MALE CONNECTOR -
 - BODY & COULPING NUT: BRASS, NICKEL PLT.
 - DIELECTRIC: PTFE
 - CENTER CONTACT: BRASS, GOLD PLT.
 - MOLDED BOOT: PVC, BLACK

3. ELECTRICAL:

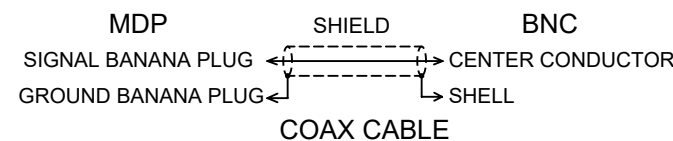
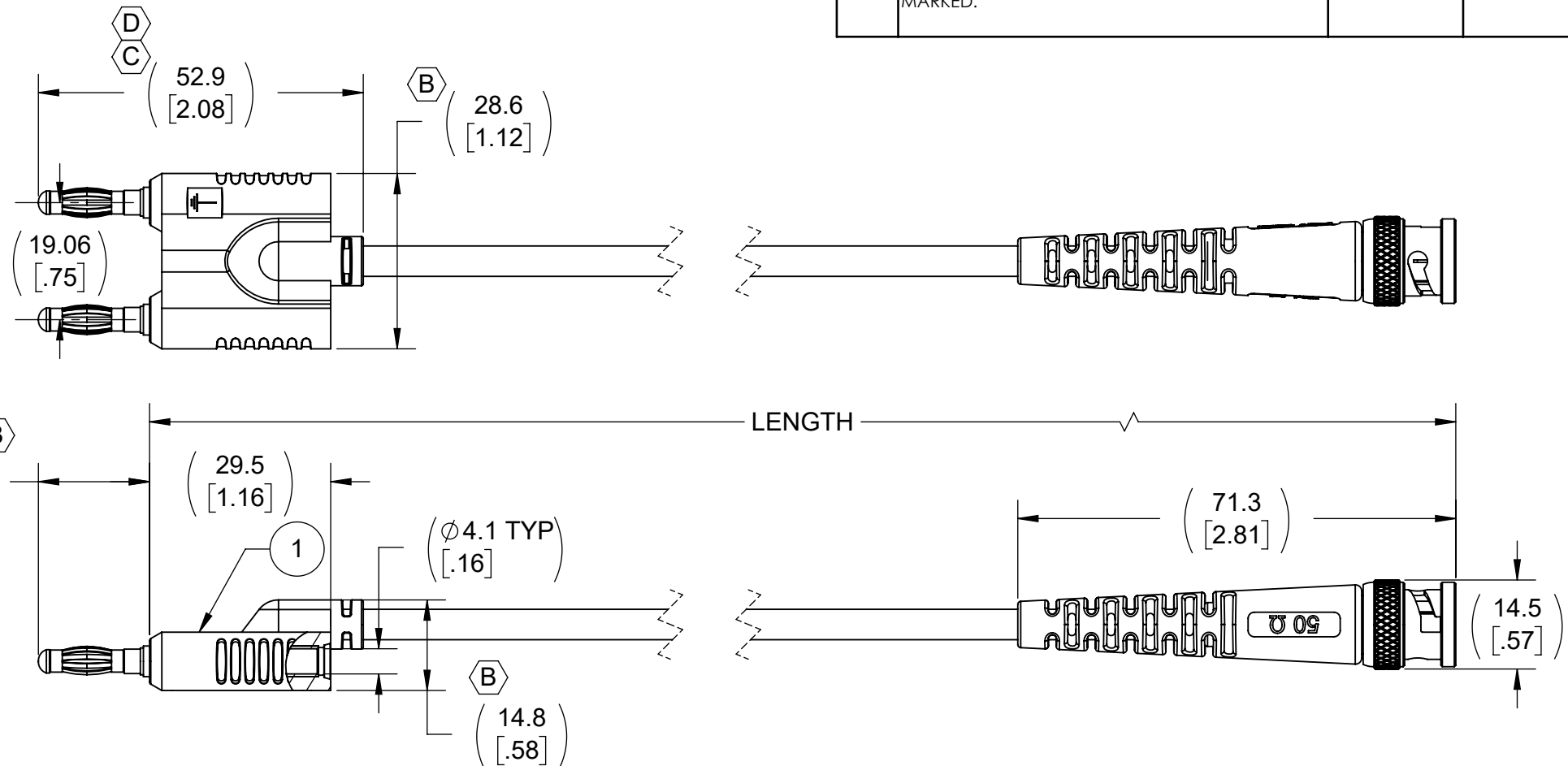
- IMPEDANCE:
 - ASSEMBLY: NON-CONSTANT
 - BNC & RG58C/U: 50Ω
- VOLTAGE -
 - 30 VRMS / 60 VDC (HANDHELD)
 - 500 VRMS (HANDS FREE)
 - DO NOT USE ON CIRCUITS SUBJECT TO TRANSIENT OVERVOLTAGES.
 - CURRENT: 3 A MAX.

4. MECHANICAL:

- OPERATING TEMPERATURE: 0°C TO +50°C
- CABLE BEND RADIUS:
 - REPEATED MIN. - 49.8 mm
 - ONE-TIME MIN. - 25 mm

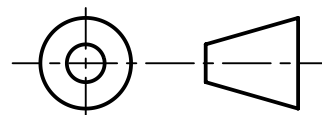
5. CE MARKED

- ROHS 2 COMPLIANT.



SCHMATIC

THIRD ANGLE PROJECTION



| | | |
|--------------|-------------------------|-----------------------------|
| CT4450-100 | 100 ± 1.5 | -100 |
| MODEL NUMBER | LENGTH & TOLERANCE (cm) | MODEL NUMBER -XXX EXTENSION |

MODEL NUMBER TABLE

| | | | | | | |
|---|--------------------------------|----------|---------------------------|--------------------------------|--|--|
| UNLESS OTHERWISE SPECIFIED DIMENSIONS ARE IN MILLIMETERS TOLERANCES ARE: X.X = ±0.5 X.X* = ±0.5* X.XX = ±0.25 X.XXX = ±0.125 DO NOT SCALE DRAWING | PROJECT NO. A660(a) | | METRIC | Cal Test ELECTRONICS | 22820 Savi Ranch Prky. Yorba Linda, CA 92887 USA | |
| | APPROVALS | DATE | | | TITLE CABLE ASSEMBLY, MDP TO BNC MALE, RG58C/U | |
| MATERIAL SEE NOTES | DRAWN WDH | 6/2/2021 | SIZE B | | | |
| TREATMENT N/A | CHECKER | | CAGE CODE 43F45 | DWG. NO. CT4450 | REV. D | |
| FINISH N/A | ENGR. B. HANSEN | 6/3/2021 | SCALE 1:1 | SHEET 1 OF 1 | | |
| | DESIGN ACTIVITY ENGINEERING | 6/2/2021 | | | | |

| ITEM NO. | DESCRIPTION | QTY. |
|----------|---|------|
| 2 | BNC MALE, FLEX BEND BOOT, RG58C | 1 |
| 1 | MOLDED ASSEMBLY, 4mm DOUBLE PLUG (MDP), RG58C/U CABLE | 1 |