

M Series Fan Foam Pad Installation Instruction Sheet

SAFETY AND WARNING GUIDELINES

⚠ DANGER HIGH VOLTAGES MAY BE EXPOSED! Always power down and disconnect power sources prior to servicing. Once the projector is powered down, allow the cooling fans to automatically turn OFF before disconnecting from AC and opening the projector.

⚠ WARNING QUALIFIED SERVICE TECHNICIANS REQUIRED! All module replacement procedures must be performed by Christie accredited service technicians

⚠ WARNING OBSERVE ALL ELECTROSTATIC PRECAUTIONS! Use a grounded wrist strap when handling electronic assemblies.

⚠ CAUTION Never operate the projector (or the fans) without all the covers installed.

INTRODUCTION

These instructions explain how to add foam pads when installing the main lamp exhaust fan for the M Series projector models.

PARTS REQUIRED

- Duct Exhaust Main Middle (Part# 011-101905-03)
 - Duct Exhaust Main Bottom (Part# 011-101906-03)
 - *120mm Fan (Part# 002-120453-01)
 - *Foam Pad (Part# 011-102750-01)
 - *(4) Screws (Part# 012-101005-01)
- *Included in service assembly (Part# 003-120453-01)

TOOLS REQUIRED

- Phillips™ Screwdriver

INSTRUCTIONS

1. Place a 120mm FAN (002-120453-01) in the orientation as shown in [Figure 1](#). (Arrow on label pointing UP.)



Figure 1 120mm Fan

2. Remove back cover of foam pad (011-102750-01). Refer to [Figure 2](#).



Figure 2 Foam Pad

3. Install foam pad onto fan, in locations shown in [Figure 3](#).



Figure 3 Foam Pad Placement

NOTE: When installing foam pad place middle of pad onto top face of fan edge. Wrap remainder of pad around rim of fan, as shown in [Figure 3](#).

4. Turn fan around 180° (Arrow on label pointing DOWN), install four foam pads on fan in locations indicated by red circles. Refer to [Figure 4](#).



Figure 4 Foam Pad Placement - Opposite Side

NOTICE! Make sure Foam pads are installed ONLY on two sides indicated in [Figure 3](#) and [Figure 4](#).

5. Place Fan with Foam Pads attached in the orientation shown in [Figure 5](#)-left. (The middle duct is upside down.)
6. With the center label and the arrow shown pointing up, align the 4 corner holes of the fan onto the 4 silicone mounts as shown in [Figure 5](#)-center. (Note the position of the cables.)
7. Fully insert the 4 silicone mounts into the casing of the fan as shown in [Figure 5](#)-right.

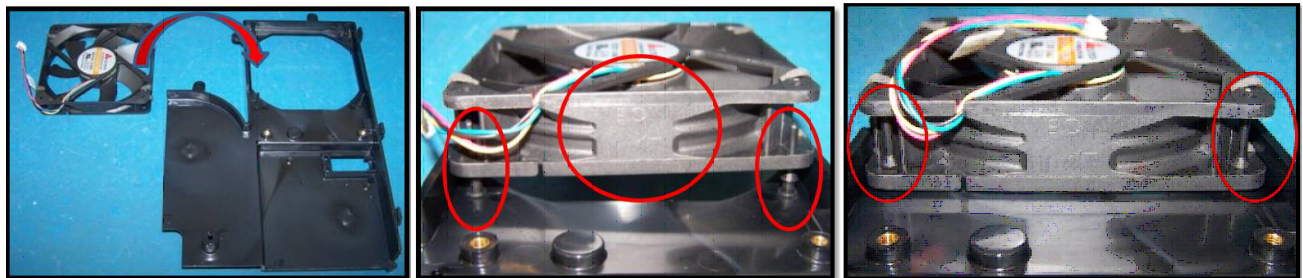


Figure 5 Install Fan into Casing

8. Get a Duct Main Exhaust Bottom (011-101906-03) and flip the middle duct as shown [Figure 5](#).

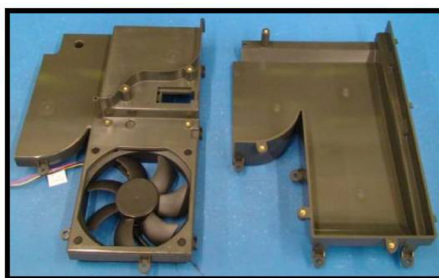


Figure 6 Duct Main Exhaust Bottom

9. Hinge the middle and bottom ducts together as shown in [Figure 7](#) with the 3 hinge points at 45 to 60 degree angle.

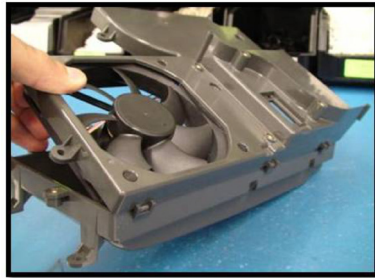


Figure 7 Duct Assembly

10. Assembly the two duct pieces together, make sure that the harness of the fan is placed in the square cutout as shown in [Figure 8](#). **NOTE:** Do not pinch the harness.

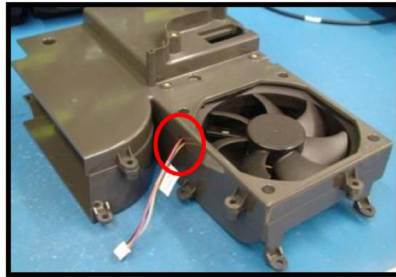


Figure 8 Fan harness

11. Secure the two duct pieces with (4) Screws @ 8in-lbs as shown in [Figure 9](#).

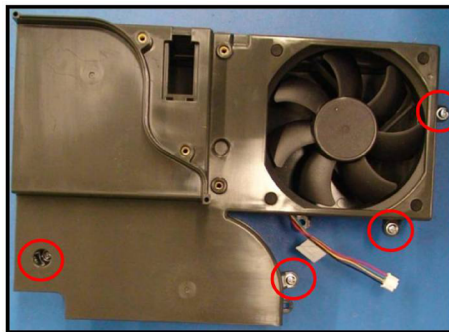


Figure 9 Secure Ducts with Screws