

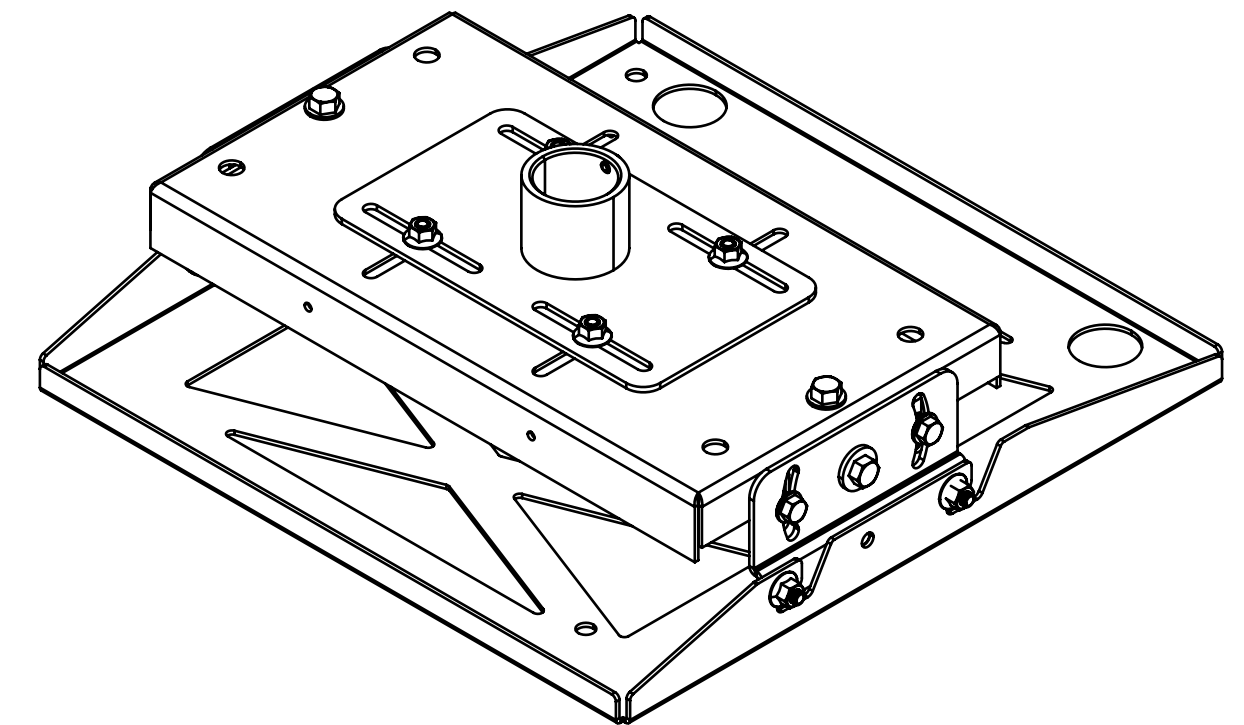
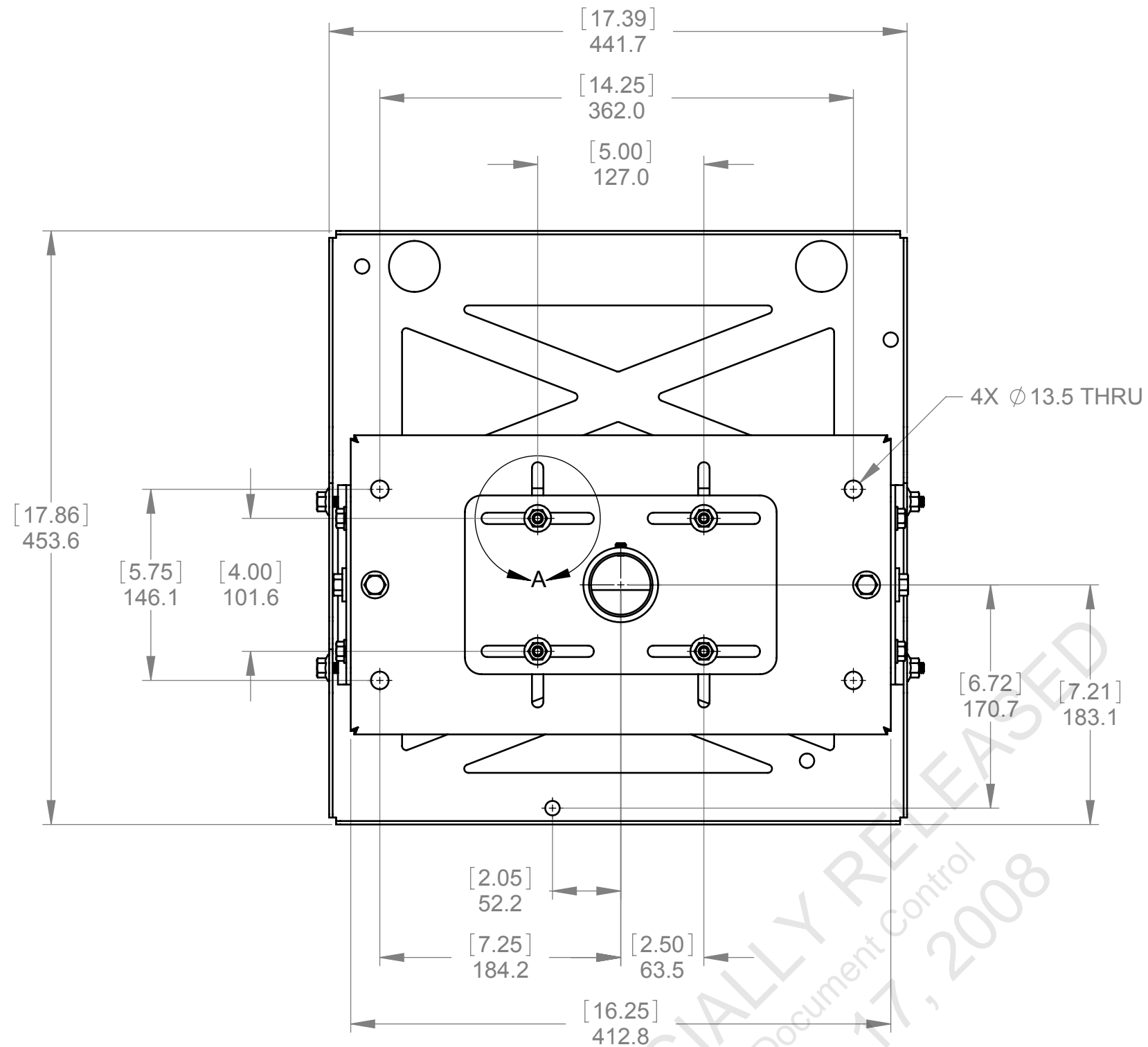
NOTES:

- 1. ALL MATERIALS AND PROCESSES MUST CONFORM TO ROHS AS SPECIFIED IN 010-100594
- 2. PACKING FILLERS, BOXES AND LABELS MUST BE MANUFACTURED ACCORDING TO CHRISTIE DIGITAL SYSTEMS STANDARD # 010-101136-01: "PACKAGING LABELING AND MATERIAL GUIDELINE"
- 3. REFER TO SUPPLIER QUALITY STANDARD 010-101164-01 FOR GENERAL QUALITY REQUIREMENTS AND PRACTICES, AND FOR CRITICAL FEATURE INSPECTION METHODS IF INDICATED WITH \square ON THIS SPECIFICATION
- 4. NOT ALL DIMENSIONS SHOWN. REFER TO CAD MATH DATA FOR DETAILS.
- 5. CAD MATH DATA AND UNTOLERANCED DIMENSIONS ARE BASIC UNLESS OTHERWISE SPECIFIED

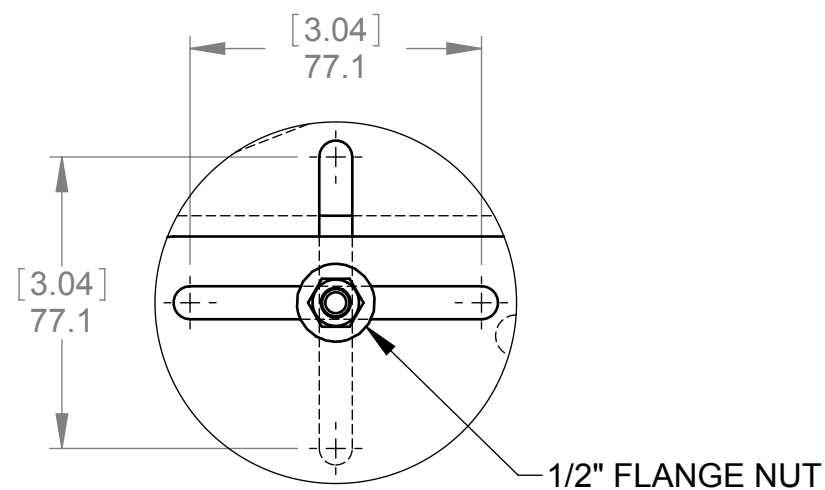


205 Westwood Ave, Long Branch, NJ 07740
 Phone: 866-94 BOARDS (26273) / (732)-222-1511
 Fax: (732)-222-7088 | E-mail: sales@touchboards.com

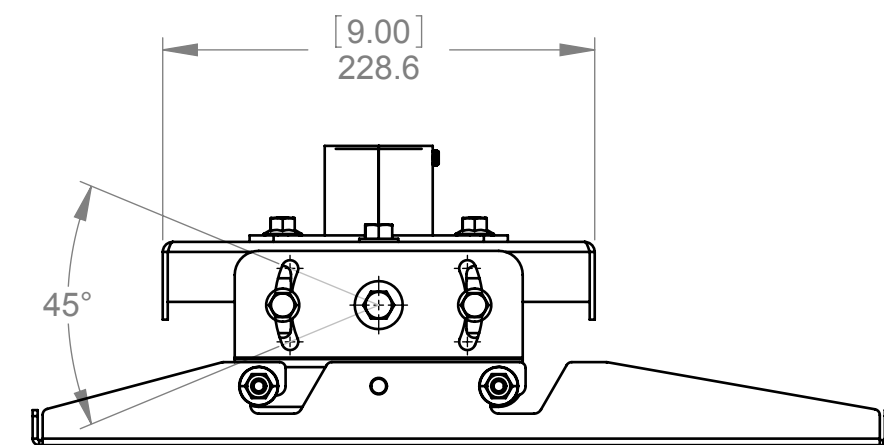
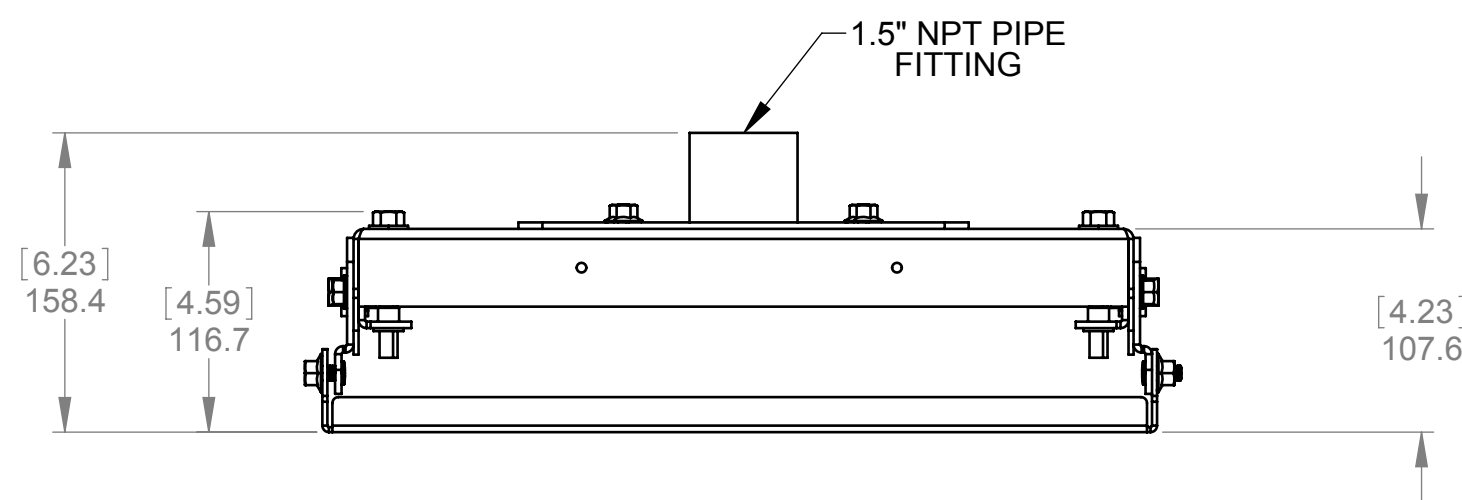
REVISION HISTORY OF: 010-101992-01			
REV	DESCRIPTION OF CHANGE	BY	DATE UPDATED
01	ORIGINAL RELEASE	KD	___/___/___



ISOMETRIC VIEW



DETAIL A
SCALE 1 : 2



- NOTE:**
- 1. X AND Y AXIS MOTION SHOWN IN DETAIL A
 - 2. 1/2" WRENCH REQUIRED FOR ADJUSTING AXES AND ANGLE POSITIONS

MECH. REF # : M025982	UNITS: MILLIMETRES	CAD MAINTAINED DATA CHANGES SHALL BE INCORPORATED ELECTRONICALLY	CHRISTIE CHRISTIE DIGITAL SYSTEMS USA, INC. CHRISTIE DIGITAL SYSTEMS CANADA, INC.
USED ON: M-SERIES	UNLESS OTHERWISE SPECIFIED INTERPRET DIMENSIONS AND TOLERANCES PER ASME Y14.5M-1994 ALL DIMENSIONS SHOWN APPLY BEFORE PLATING AND COATINGS TOLERANCES APPLY AS SHOWN BELOW	DRAWN BY: K. DITNER DRAWN DATE: 2008-09-26	
MATERIAL: NOT APPLICABLE	DECIMAL PLACES INCHES MILLIMETRES .XXX ±.005 ±0.1 .XX ±.010 ±0.3 .X ±.020 ±0.5	PROPRIETARY NOT TO BE DISCLOSED OR REPRODUCED IN ANY MANNER WITHOUT THE EXPRESS WRITTEN PERMISSION OF CHRISTIE	PART DESCRIPTION DWG CEILING MOUNT M-SERIES
DEBURRING: BREAK ALL SHARP EDGES FOR SAFE HANDLING	ANGULAR DIMENSIONS XX° ±0.5° XX.X° ±0.1°	THIRD ANGLE PROJECTION	
FINISH: NONE	SURFACE ROUGHNESS MICROINCH 63 MICRON 1.6		SCALE: 1:4 MASS: N/A
COATING: NONE			REVISION: 010-101992-01 01 SHEET 1 OF 1
I.D.: NONE			
SIMILAR TO: NONE			