

# Phoenix Quad-T Quick Start

## What you will need

- ✓ One CAT 5E or CAT-6 Ethernet cable
- ✓ A device with a web browser
- ✓ Up to 4 HDMI cables
- ✓ Phoenix system
- ✓ Managed network configured to support multicast streaming
- ✓ Power
- ✓ Optionally for reachback control, up to 4 mini USB to USB-A cables

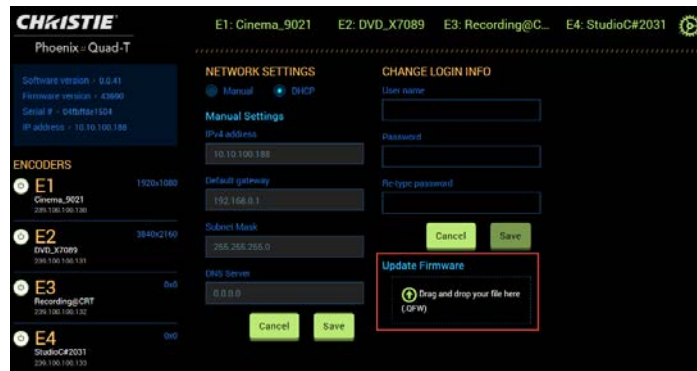
### 1. Set up the unit.



<p>1. Connect video sources to Input 1-4.</p>	<p>Connect one end of the HDMI cable to the device and the other end to the source.</p>
<p>2. Optionally, set up the connectors for reachback control (KVM1 is used for the source connected to Input 1, KVM2 for the source connected to Input 2, etc.).</p>	<ul style="list-style-type: none"> <li>• Connect a mini USB connector to the KVM port on the Quad-T.</li> <li>• Connect the USB-A end to the source.</li> </ul>
<p>3. Connect the unit to a network.</p> <div style="border: 1px solid gray; padding: 5px; margin-top: 10px;"> <p><b>i</b> Confirm the network has a managed network switch and that it has been configured to support multicast streaming.</p> </div>	<p>Connect one end of a Ethernet cable to the Network connector on the unit and connect the other end to the managed network.</p>
<p>4. Connect the power cable.</p>	<p>Connect the 4-pin power cable to the back of the unit. Connect the other end to a power source.</p>
<p>5. Power on the unit.</p>	<p>Press the power switch. When the unit is ready for use, the IP address of the unit is displayed on the front panel.</p>
<p>6. Connect a browser-enabled device (for example, laptop) to the same network as the unit.</p>	<p>Contact your system administrator if needed.</p>
<p>7. Connect to the Phoenix Quad-T Web Manager.</p>	<p>Open a browser and browse to the IP address displayed on the front panel. The login page for the web manager is displayed.</p>
<p>8. Log in.</p>	<p>Default user name: service                  Default password: service                  Change the default settings using the System Settings page.</p>

2. Update the firmware.

Obtain the latest firmware file from the Christie web site.  
Use the System Settings page in the Quad-T Web Manager to update the firmware.

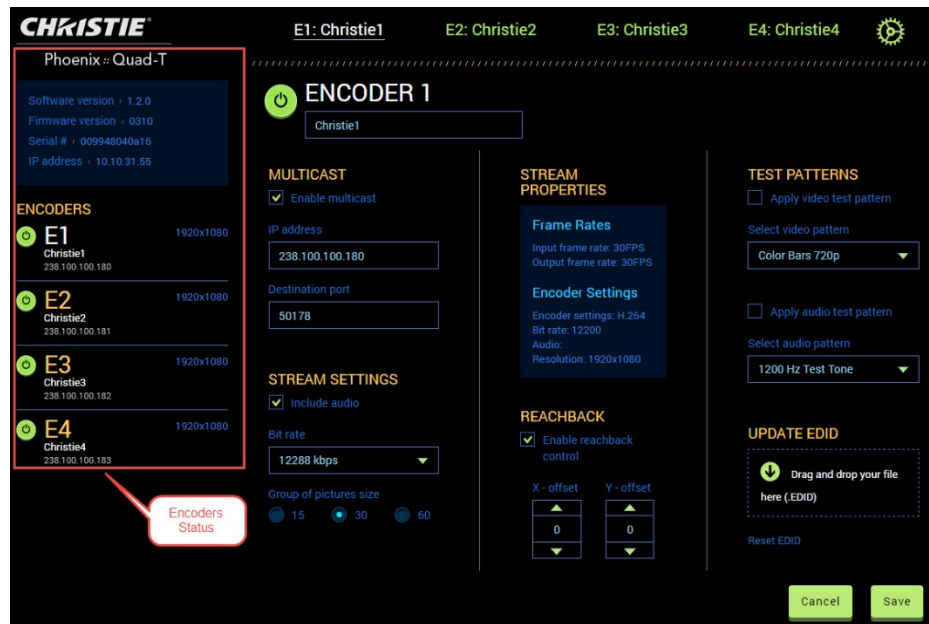


3. Configure the Encoder sources using the Phoenix Quad-T Web Manager.

Use the E1, E2, E3, and E4 pages in the Phoenix Quad-T Web Manager to configure the encoder sources connected to Input 1-4. Each source is configured on the web page related to the physical connector (for example, E1 is used to configure the source connected to HDMI 1).

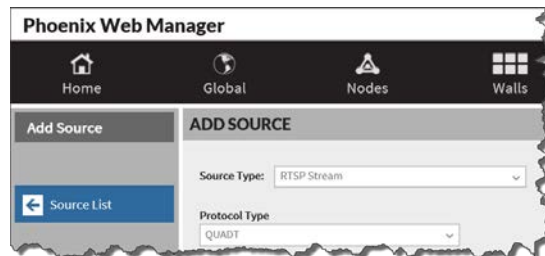


- Multicast addresses must conform to the following:
  - ✓ Must be validated for channels and across units
  - ✓ Cannot conflict with other Quad-T units or other devices
- Audio can be enabled
- Bit rate can be adjusted to align with the bandwidth or quality requirements.



4. Add the Phoenix Quad-T to your Phoenix system as a RTSP source.

Log in to the Phoenix Web Manager and configure the Phoenix Quad-T as a **RTSP source** on your Phoenix system.  
Select **QUADT** as the **Protocol Type**.



**Learn More** This is a Quick Start Guide. See the Phoenix Quad-T User Manual (020-101771-nn) for more details.

**Christie Technical Support** For support, call 1-800-221-8025 (option 3) or email: [Tech-Support@Christiedigital.com](mailto:Tech-Support@Christiedigital.com)