

MIX Industrial Mobile Markerboard

Claridge®



In Claridge's MIX line of highly customizable, mixed-material mobile markerboards, those who design for collaborative communication environments now have more flexibility to achieve their desired aesthetic. With MIX, you can customize nearly every markerboard component — from colors, finishes and writing surfaces to metal trays, bases and accent strips — resulting in a virtually unlimited palette that transforms your design concept into a creation.

- Responsibly Harvested Ash Wood frame
- Available in Claridge Glass and LCS Porcelain magnetic writing surfaces
- Add functionality and style by integrating Claridge Cork or a Biophilic panel
- Industrial casters with exposed brake locks

Samples available at:



MIX Industrial

Mobile Markerboard

MIX
CHOOSE
YOUR
EXPRESSION

SPECIFY & QUOTE



AR  View from every angle

STANDARD SIZES (HxW)

Partial Height Full Height

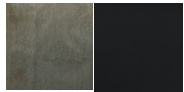
| | |
|------------|-------------|
| 60" x 48" | 72" x 36" |
| 72" x 36" | 72" x 42" |
| 72" x 48" | 72" x 48" |
| 72" x 60" | **72" x 60" |
| *72" x 72" | |

*Available for Porcelain and Porcelain/Cork only

**Available for Porcelain only

MIX FINISH COLORS

Base, Shelf & Accent Strip Colors



Matte Clear Matte Black
302P

MIX Wood Finish Options



Clear Vellum Driftwood Rustic

SPECIFICATIONS

- Metal accent strip highlights an integrated marker rail
- Metal base is finished with a clear powder coating and features exposed welds and functional hex bolts
- Wood frames: Clear, Vellum, Driftwood and Rustic stains
- Optional metal shelf to match the base (partial height only)
- Add functionality and style by integrating a Biophilic panel

[View optional Biophilic Panels HERE](#)

WRITING SURFACES

Claridge Glass

- Low-iron, ultra-clear glass
- Magnetic surface
- Greenguard certified, eco-friendly, and emits no VOC's

[View Glass Highlights HERE](#)

Claridge LCS Porcelain

- Projection friendly surface that won't ghost or stain
- Available in markerboard and chalkboard options
- Greenguard certified, eco-friendly, and emits no VOC's
- Lifetime warranty

[View Porcelain Highlights HERE](#)

COLORS

Claridge GLASS

- 10 standard glass colors
- 180 optional glass colors
- Custom color matching available

[View Claridge Glass Colors HERE](#)

Claridge LCS PORCELAIN

- 3 markerboard colors
- 3 chalkboard colors

[View Claridge Porcelain Colors HERE](#)

Claridge CORK

- 15 standard cork colors

[View Claridge Cork Colors HERE](#)

LEARN MORE