

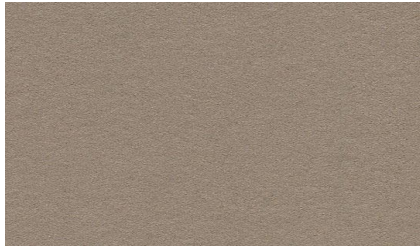


Claridge®

TURN WORKSPACES INTO IDEA PLACES

## CLARIDGE CORK

Bulletin Board



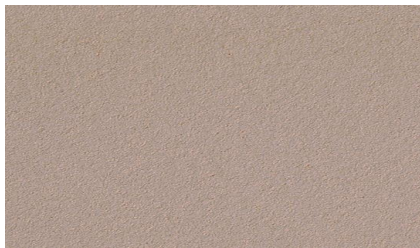
NO. 1108 MUSHROOM



NO. 1103 OYSTER



NO. 1117 SALSA



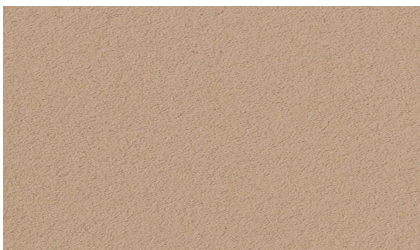
NO. 1109 BUFF



NO. 1111 SMOKE



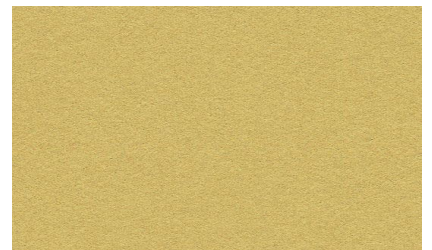
NO. 1118 TANGERINE



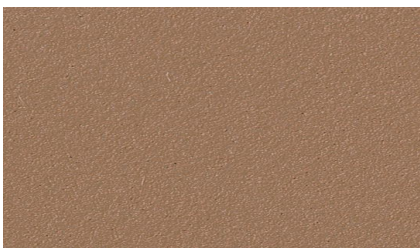
NO. 1110 FAWN



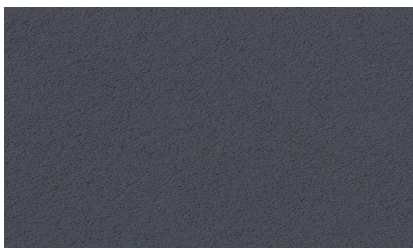
NO. 1113 STEEL GRAY



NO. 1119 PINEAPPLE



NO. 1100 TAN



NO. 1136 GRAPHITE



NO. 1120 LETTUCE



NO. 1104 CINNAMON



NO. 1132 BLACK



NO. 1129 BLUEBERRY

Note: Color may vary slightly from samples.

## PRODUCT DESCRIPTION

Claridge Cork is made from pure, natural ingredients including linseed oil, pine resin, cork and pigments that are calendared onto a jute backing to create a smooth, suede-like surface of unsurpassed beauty and exceptional durability.

## FEATURES

- Environmentally friendly
- Tacks insert easily, are gripped firmly
- Does not crack, peel or crumble
- Washable stain-resistant finish
- Use for wall covering or individual bulletin boards
- Expanded color range - 15 harmonizing colors
- Dimensionally stable
- Meets ASTM E-84, NFPA 258 (fuel contribution) - Class B, and NFPA 255 (critical radiant flux) - Class II
- No toxins - no harmful by-products or emissions
- Low light reflectance
- Naturally inhibits bacterial growth

Note: Features referenced above reflect characteristics of the cork surface only.

---

## Manufacturers



### Claridge Products and Equipment Inc. Harrison, Arkansas

#### Main Office and Production Facility

601 Highway 62-65 South  
P. O. Box 910  
Harrison, Arkansas 72602  
Toll Free 800-434-4610  
Phone 870-743-2200 Fax 870-743-1908  
claridge@claridgeproducts.com  
www.claridgeproducts.com

#### Manufacturing and Distribution

180 North Sherman Avenue  
Corona, California 92882  
Phone 951-734-6262 Fax 951-734-6464  
sales@claridgewest.com

#### Fabrication and Distribution

100 Jeanette Barrett Industrial Blvd.  
Wetumpka, Alabama 36092  
Phone 334-514-4524 Fax 334-514-4855  
sales@claridgese.com

#### Midwest Division Sales and Distribution

923 North State Street  
Elgin, Illinois 60123  
Phone 847-991-8822 Fax 847-991-9057  
mw@claridgeproducts.com

#### South Central Division Sales and Distribution

3241 Garden Brook Drive  
Farmers Branch, Texas 75234  
Phone 972-247-8075 Fax 972-484-8149  
sc@claridgeproducts.com

#### Northeast Distribution Center

245 Fourth Street, Bldg 1, Unit E  
Passaic, New Jersey 07055  
Phone 800-434-4610 Fax 870-743-1908  
east@claridgeproducts.com

#### Northwest Division c/o PBS Supply

7013 South 216th St.  
Kent, Washington 98032  
Phone 253-395-5550 Fax 253-395-5575  
nw@claridgewest.com