

Thank you for another successful year.

Clear Touch™ relies on our resellers in order to innovate and advance our product and service offerings—and we want to make it easy for you to grow your own business with our demos, training sessions, and Partner Portal.

Stay up-to-date on the latest news and product updates by taking advantage of our industry leading Partner Program resources:



MAIN SITE
getcleartouch.com



ACCESS PARTNER PORTAL
getcleartouch.com/portal



TRAINING
academy.getcleartouch.com



SCHEDULE A LIVE DEMO
getcleartouch.com/demo

f t in G+ p y @

getcleartouch.com

(864) 973-7973 • info@getcleartouch.com

1100 Thousand Oaks Blvd, Greenville, SC 29607

© Copyright 2018 Clear Touch Interactive, Inc. All rights reserved. Information in this document is subject to change without notice. Document 7000X Series Specifications.

7000X

Leap Forward

with a flexible, all-in-one solution that will keep your business ahead of the times.





Exciting product updates from Clear Touch™, the largest US owned and operated manufacturer of Interactive Panels

Clear Touch™ is pleased to announce our next generation corporate product, designed to help businesses advance like never before. 2017 featured multiple innovations, including the roll-out of our industry leading Partner Program and the launch of the new 6000U Series panel. In fact, our panels have been so popular that we have had to accelerate both production and logistics—always a good thing when the warehouse calls and says they can't keep the product on the shelves!

Our team has worked with development, listened to resellers and customers, and thoroughly tested this next iteration of the Clear Touch™ panel for business. We eagerly anticipate the launch of our new panel and software, which will catapult us into the corporate space, making us the leading choice for companies that value collaboration, flexibility, and security.



COMING FALL 2018

7000x Series

Clear Touch™ wants to be at the forefront of innovation.

Our team has worked to provide the latest business panel that meets the needs of corporate and government agencies. The 7000x Series is available in 55" or 65" screen sizes—the 65" panels can also be connected together to create a panel wall.



CRYSTAL CLEAR 4K DISPLAY

Zoom in with no blur



LOW FRICTION GLASS

Creates a smooth, hardened surface that is easy to write on



SMALLER AIR GAP BETWEEN THE GLASS AND TOUCH INTERFACE

Results in better touch experience and less chance of screen yellowing over time



LOW TOTAL SYSTEM LATENCY

Only milliseconds between command and response



20 POINTS OF TOUCH

Multiple users can collaborate at once



PCAP DESIGN

Allows for sleek, flat edges and capacitive touch



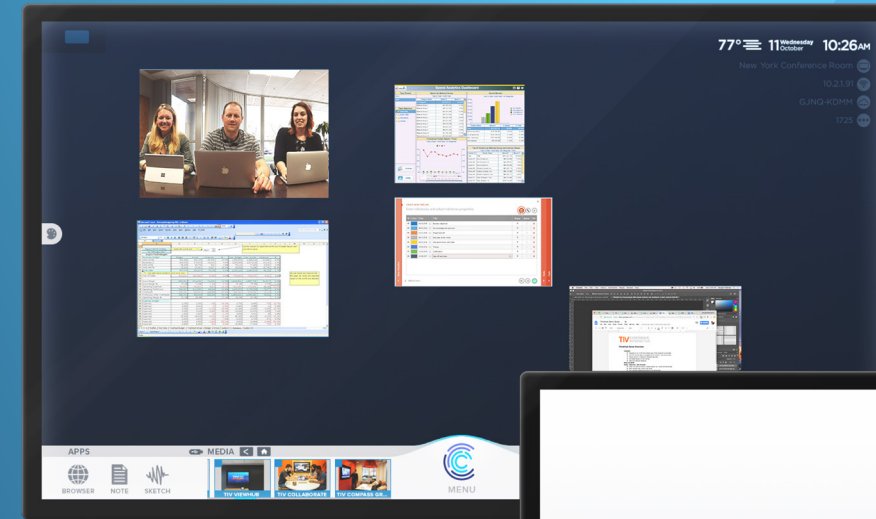
MULTIPLE PRESSURE SENSITIVITY

Panel has the ability to detect pressure and react with thicker or thinner lines



SERVICE AND SUPPORT

Same great quality, support, and warranty options that Clear Touch™ is known for



POWERED BY T1V

Meet Chorus

Exclusive business software only found on Clear Touch™ business panels

Clear Touch™ is proud to partner with T1V to bring you Chorus, the software that creates harmony in collaboration—so easy even your CEO can use it without bringing IT to every meeting.

KEY FEATURES OF CHORUS

SIMPLE.

Chorus is the all-in-one business software your clients need: Access a whiteboard for ideation sessions, connect to your favorite conferencing tool, pull up a webcam, open and navigate in multiple browsers at once, and stream content on the board from multiple users at one time.

CONNECTED.

Allow users connect and stream to the panel through your network or send out a secure passcode so offsite users can also share their screens. Individual presentation pieces can be saved and emailed to users as well as stored on an off-panel app.

VERSATILE.

Allows you to access conference tools through plugins so you can keep using your favorite programs..

SECURE.

No information is stored on the panel itself. Instead, users access past information only via a computer app. Presentations can be streamed on the panel through a password protected wireless connection so information stays in the proper hands—no need to walk out of a meeting and wonder if you deleted your data.

BUDGET-FRIENDLY.

No individual user licensing fees.