

A TINY THERMAL CAMERA. A BIG STEP FORWARD FOR CONTRACTORS.

Compact

THERMAL IMAGING CAMERA DESIGNED FOR YOUR SMARTPHONE

Highly-portable thermal imager, with a wide 36-degree field of view, provides contractors the ability to easily, accurately, and safely inspect indoors.

Available for iPhone® and Android™



206 x 156
Thermal
Sensor



36°
Field of
View



-40° F to 626° F
Detection
Range



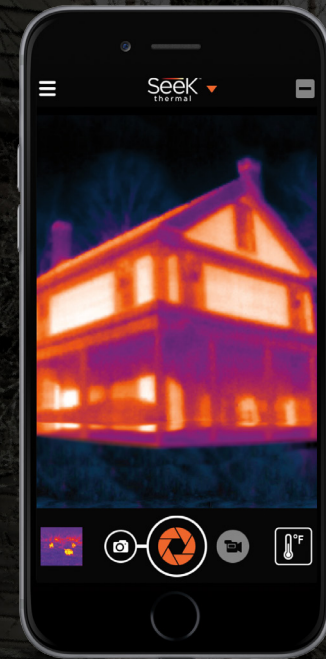
1,000 ft
Distance



Works
Day & Night

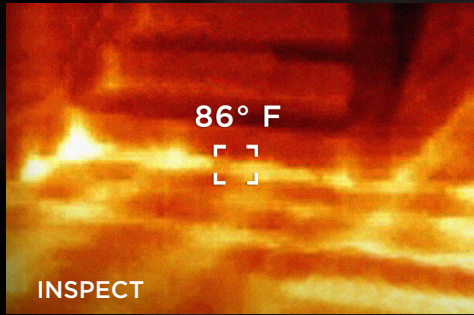


Waterproof
Carrying Case

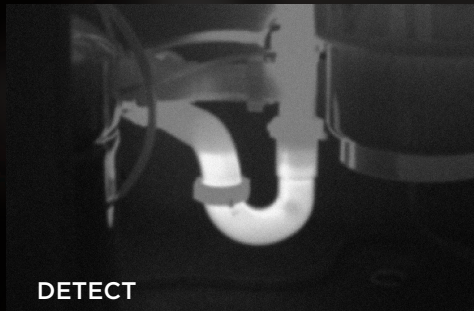


Seek™
thermal

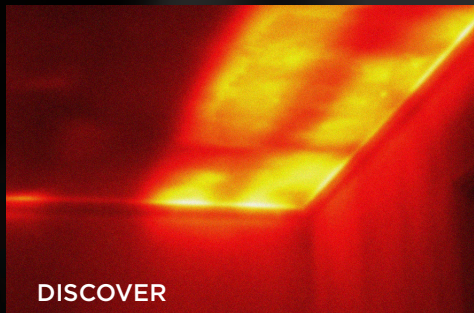
thermal.com



INSPECT



DETECT



DISCOVER

CONNECT AND DETECT

- Wide field-of-view quickly scans the inside of any room for problem areas
- 206 x 156 Thermal Sensor accurately identifies areas of heat loss and gain
- Measures temperature differences from -40 to 626 degrees Fahrenheit
- Portable and lightweight

THERMAL IMAGING TECHNOLOGY THAT'S EASY TO USE

- Intuitive, free app from Google Play and iTunes AppStore
- Library of color palettes to maximize all thermal imagery
- Customizable performance settings to fully personalize the user experience
- Comes with its own waterproof case to withstand the elements

SEEK A NEW ADVANTAGE

- Accurately inspect mechanical, electrical HVAC and building applications
- Safely examine any job site in light or total darkness
- Work faster and be more efficient from the convenience of your smartphone

SPECIFICATIONS

DETECTOR & OPTICS

Thermal Sensor	206 x 156
Detection Distance	1,000 feet (330 yards, 300 meters)
Field of View	36 Degree FOV
Temperature Range	-40F to 626F (-40C to 330C)
Frame Rate	< 9 Hz
Focus	Adjustable Focus
Lens Material	Chalcogenide
Microbolometer	Vanadium Oxide
Pixel Pitch	12 Microns
Spectral Range	7.5 - 14 Microns

SYSTEM SPECS

User Interface	Connects to a smartphone. Controlled by free Seek mobile app.
Temp. Display Scale	Fahrenheit or Celsius
Color Palettes	9 Options
Thermal Tools	Spot Thermography, Hi-Low, and Threshold modes
Capture Settings	Records photos and video
Storage Media	Stores photos and video directly to smartphone
Sharing	Share directly from mobile app to email, text, and social media
Battery	No batteries required. Powered by smartphone
Phone Compatibility	iPhone® and Android™ For compatible phone list, visit thermal.com/supported

DEVICE & PACKAGE INFO

Country of Origin	Designed and manufactured in Santa Barbara, California, USA with global components
Color	Black
Device Dimensions (H x W x D)	1 x 1.75 x .8 inches
Device Weight	.5 ounces
Box Dimensions (H x W x D)	7 x 3.75 x 1.25 inches
Package Weight	8.3 ounces
Included in the box	Seek Compact and Waterproof Carrying Case

For support and user guides visit support.thermal.com



Compact
Available for iPhone® and Android™

Seek
thermal

thermal.com