

Leakage Current

Model LCB



FAST



SAFE



RELIABLE



*Image for reference only



LEAKAGE CURRENT

Designed to provide a fast, safe and reliable method of measuring unweighted touch current, touch current weighted for perception or reaction and touch current weighted for let-go. Measures DC and AC currents: calibrated frequency response 20Hz to 1MHz (Configurations 1, 2, 3, 4 and 6). Designed and built in accordance with IEC 60990-1 and IEC 60990-2, as well as in accordance with the applicable transfer impedance requirements in IEC 60990.

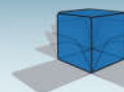


Features

- Provides networks for:
 - IEC 60990:1999
 - IEC 61010-1:2010
 - IEC 60950-1:2005
 - IEC 60335-1: 2012
 - IEC 60990:1999
 - IEC 60601-1:2012
 - Various UL standards
 - Others; contact factory
- Portable, lightweight
- Measures 4.5 x 1.2 x 2.4 in.
- No batteries or power required
- Custom test leads available
- Provided with NIST calibration; A2LA calibration available; 20 Hz-1Mhz
- One year warranty

www.compwest.com

(800) 748-6224



COMPLIANCE WEST USA
The blue box that tests. And tests.

Ver3 161129

Leakage Current



FAST



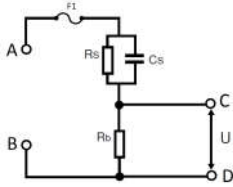
SAFE



RELIABLE

Available Configurations:

Config 1,6

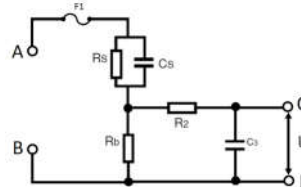


Compliance to:

Config 1:
IEC 60990:1999 Fig. 3
IEC 61010-1:2010 Fig A.3

Config 6:
IEC 61010-1:2010 Fig A.4

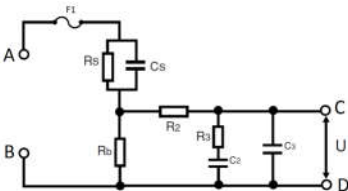
Config 2



Compliance to:

IEC 60990:1999 Fig. 4
IEC 60950-1:2005 Fig. D.1
IEC 61010-1:2010 Fig. A.1
IEC 60335-1: 2012 Cl. 13.2

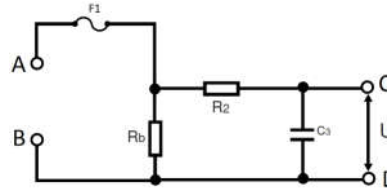
Config 3



Compliance to:

IEC 60990:1999 Fig. 5

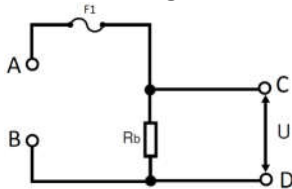
Config 4



Compliance to:

IEC 60601-1:2012 Fig. 12

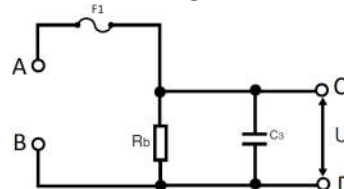
Config 5



Compliance to:

IEC 61010:2010 Fig. A.2

Config UL



Compliance to:

Various UL standards:
1500 Ohm resistor in parallel with 0.15uF capacitor

Other configurations available. Contact factory.



Specifications

| | |
|-----------------------|------------------------------------|
| Input Voltage Rating: | 0-265Vac, 0-300Vdc |
| Input Current Rating: | 100 mAac, 100mAdc (fuse protected) |
| Frequency Response: | 20Hz - 1MHz |



Environmental

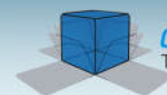
| | |
|--------------------------|-------------------------|
| Operation Temperature: | 15 - 40 °C |
| Relative Humidity Range: | 0 - 90 % Non-Condensing |



General

| | |
|------------------|---|
| Dimensions: | 4.5 in. Wide x 1.2 in. High x 2.4 in. Deep |
| Weight: | 4.5 oz (125 gr) |
| Product Package: | LCB Leakage Current Product Manual Pluggable terminal block with input and output test leads NIST Traceable Calibration Certificate to ANSI Z540, 20Hz to 1Mhz |

650 Gateway Center Way, Suite D. San Diego, CA 92102 USA
Toll Free: (800) 748-6224 Phone: (619) 878-9696



COMPLIANCE WEST USA
The blue box that tests. And tests.