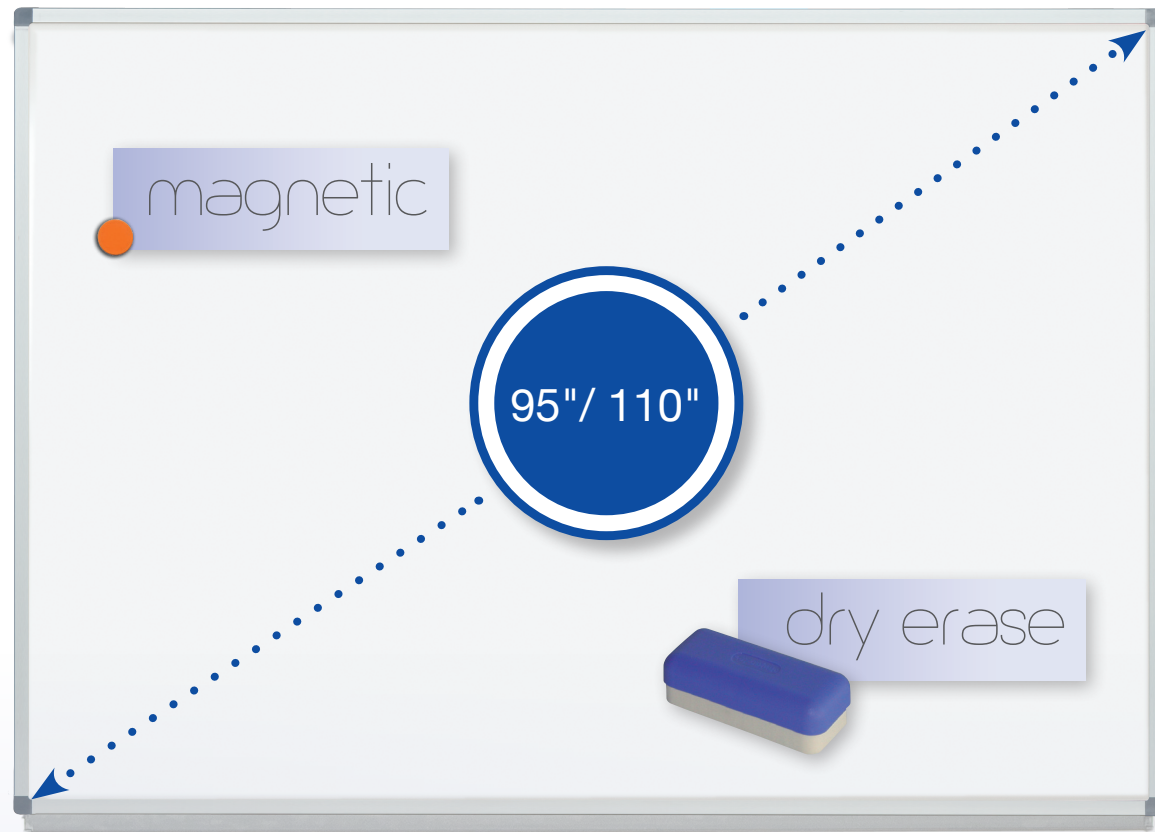


# de luxe

projection screen  
and markerboard

## Features:

- Hotspot-free, projection-quality surface
- Matte white, low glare surface offering wide viewing area
- Magnetic and dry erase
- Aesthetic, anodized aluminum frame
- Thin 0.075" bezel, designed for use with interactive UST projectors
- Light-weight though rigid design
- Metal wall brackets for easy wall mounting



## de luxe projection screen and markerboard

The ConenMounts **de luxe** projection screen and markerboard is designed specifically for use with (interactive) projectors. The boards feature a low glare, hotspot-free projection-quality surface, offering a wide viewing angle.

The surface is framed in a thin, clear anodized aluminum frame with mere 0.075" bezel thickness at the screen surface, guaranteeing compatibility with even the most demanding interactive projector.

The surface is magnetic and erasable, allowing for the board to

be used both as a projection screen and as a whiteboard with dry erase markers and magnets.

The highly stable construction of honeycomb core and steel surface on both sides ensures perfect screen flatness.

The boards come standard with metal top brackets but are also compatible with ConenMounts motorized range of carts and stands.

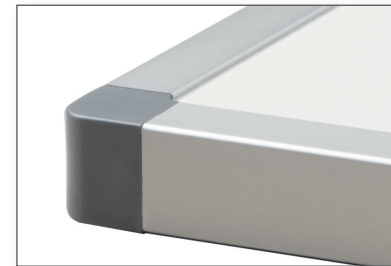
Available in 95" and 110" 16:10 wide format sizes.

Other sizes available upon request.

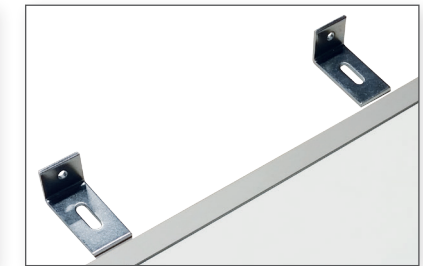


de luxe

projection screen  
and markerboard



Thin 0.075" bezel works with any interactive projector.



Comes standard with 4 top brackets.

de luxe projection screen

| Part No. | Diagonal |     | Viewing area (H x W) |           | Overall dimensions |           | Net weight |    | Ship dimensions |               | Ship weight |    |
|----------|----------|-----|----------------------|-----------|--------------------|-----------|------------|----|-----------------|---------------|-------------|----|
|          | inch     | cm  | inch                 | cm        | inch               | cm        | lbs        | kg | inch            | cm            | lbs         | kg |
| WB-DL95  | 95       | 241 | 50.5 x 81            | 129 x 206 | 51 ¾ x 82 ¼        | 132 x 209 | 50         | 23 | 55 x 86 x 4     | 140 x 217 x 9 | 70          | 32 |
| WB-DL110 | 110      | 280 | 58.5 x 93.5          | 149 x 238 | 59 ¾ x 94 ¾        | 152 x 241 | 66         | 30 | 63 x 98 x 4     | 160 x 249 x 9 | 90          | 41 |



## CONEN<sup>®</sup> mounts

eMail: [info@conenmounts.com](mailto:info@conenmounts.com)  
[www.conenmounts.com](http://www.conenmounts.com)

**Distributed by:**

Stirling Communications Supply  
29 Poplar Drive  
Stirling, NJ 07980

T: (908) 604-9360  
E: [DPilar@stirlingcomm.com](mailto:DPilar@stirlingcomm.com)