



Contrast Enhancing Base

PERFECT PRESENTATION FOR LOW CONTRAST, TRANSLUCENT SAMPLES

The Contrast Enhancing Base will optimize lighting for a variety of transparent and translucent samples, enhancing the observed contrast.

See the invisible

Subjects that appear transparent under bright-field illumination can be seen clearly with three-dimensional qualities when illuminated with the Contrast Enhancing Base. This optically engineered illumination can be adjusted for each sample, enabling users to see details that are not visible with alternative light sources. Control of intensity, angle and shutter allows otherwise invisible edges to be highlighted, textures and interfaces to be seen clearly using Vision Engineering's eyepiece-less, conventional stereo and digital microscopes. Stunning details can then be captured in two or three dimensions.

What is contrast?

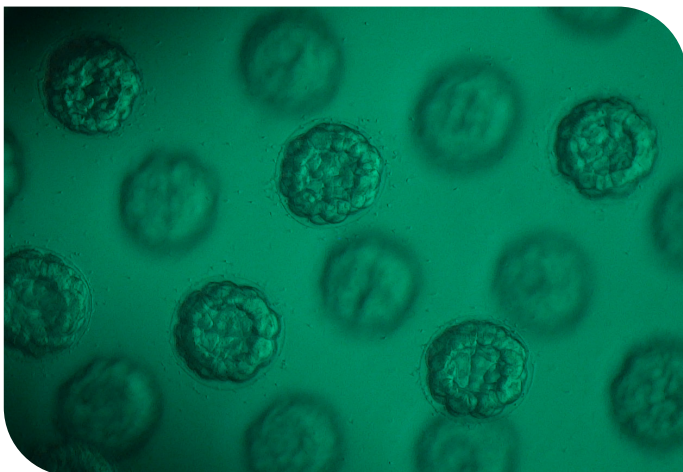
The human eye is naturally drawn to contrast, with increases in contrast improving the visibility of a detail. Contrast is the speed of change from one area of brightness to another. Gradual change is seen as low contrast, while a subject such as a black line drawn on white paper is high contrast. Many subjects have little contrast which is undetectable to the

human eye. These could be biological cells growing in a support medium or small organisms swimming in a single drop of water. They could be optical components for life changing medical procedures or optics for day-to-day cameras.

Detecting contrast is also useful in the fields of plastics and additive manufacturing where transparent or mono-color translucent components are commonplace. To see the detail within these subjects by adding contrast into the subject is invaluable.

Multi-system compatibility

The Contrast Enhancing Base is a multi-system accessory and is compatible with the following Vision Engineering inspection systems: Lynx EVO, DRV-Z1, Mantis, EVO Cam II, SX Elite and SX CMO.



Sea urchin eggs under EVO Cam II (800x magnification)



Sugar crystals under EVO Cam II (100x magnification)

Key benefits

- Enhances 3D view of hard to see subjects
- Control of light to highlight edges and key details within the subject
- Adjust shutter, angle of illumination and intensity to optimize the image for any type of subject
- Applications in plastics, optics, ceramics, bio-technology, research, pharmaceuticals and more...
- Compatible with Vision Engineering stereo and digital microscopes



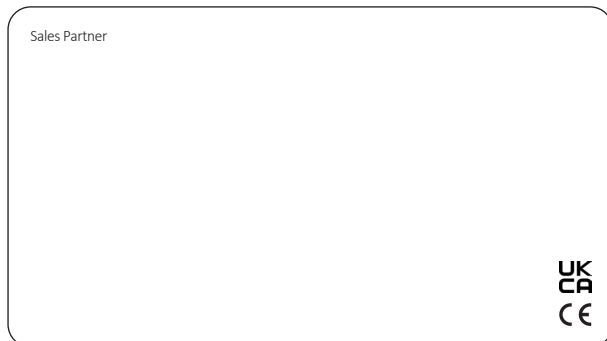
VISION ENGINEERING + OUR DIFFERENCE

Vision Engineering Ltd. has been designing and manufacturing high quality ergonomic microscopes, digital instruments, inspection and non-contact measuring systems for over 60 years.

Innovation

With a philosophy of design innovation, Vision Engineering holds world patents for a number of optical / digital techniques, significantly improving viewing ergonomics and enabling customer quality and productivity improvements.

To see our focused quality, please contact your Vision Engineering branch, local authorized distributor, or visit our website: visioneng.us



Disclaimer- Vision Engineering Ltd. has a policy of continuous development and reserves the right to change or update, without notice, the design, materials or specification of any products, the information contained within this brochure/datasheet and to discontinue production or distribution of any of the products described.
E.O.B.E.: Errors and omissions excepted.

LTS474EN-US_01 Contrast Enhancing Base brochure | Copyright ©2021 Vision Engineering Ltd. | All rights reserved.

Quality

Vision Engineering prides itself on quality products, electronics, mechanics and optics and is certified for the quality management system ISO 9001:2015. Quality is as important to us as it is to our customers. Our systems have proved themselves many times over and are chosen by the world's leading companies.

Global

Vision Engineering has manufacturing and design facilities in the UK and USA, plus sales and support offices throughout Europe, the Americas, the Far East, and Asia. We support our customers with close technical and service support anywhere in the world.

Vision Engineering Ltd.
(UK Manufacturing & Commercial)
The Freeman Building, Galileo Drive, Send, Surrey, GU23 7ER, UK
T +44 (0) 1483 248300
E generalinfo@visioneng.co.uk

Vision Engineering Ltd.
(Central Europe)
Anton-Pendele-Str. 3, 82275 Emmerring, Deutschland
T +49 (0) 8141 40167-0
E info@visioneng.de

Nippon Vision Engineering
(Japan)
272-2 Saedo-cho, Tsuduki-ku, Yokohama-shi, Kanagawa
224-0054, Japan
T +81 (45) 935 1117
E info@visioneng.jp

Vision Engineering
(South East Asia)
P-03A-20, Impian Meridian, Jalan Subang 1, USJ 1, 47600 Subang Jaya, Selangor Darul Ehsan, Malaysia
T +604-619 2622
E info@visioneng.asia

Vision Engineering Inc.
(NA Manufacturing & Commercial)
570 Danbury Road, New Milford, CT 06776, USA
T +1 (860) 355 3776
E info@visioneng.com

Vision Engineering Ltd. (Italia)
Via G. Paisiello 106
20092 Cinisello Balsamo MI, Italia
T +39 02 6129 3518
E info@visioneng.it

Vision Engineering (China)
Room 904B, Building B, No.970, Nanning Road, Xuhui Vanke Center Shanghai, 200235, P.R. China
T +86 (0) 21 5036 7556
E info@visioneng.com.cn

Vision Engineering (Mexico)
T 800 099 5325
E infomx@visioneng.com

Vision Engineering
(Latin America)
E infomx@visioneng.com

Vision Engineering Technology Centre
16 Technology Drive, Unit 148, Irvine, CA 92618, USA
T + 1 (800) 644 7264 (Toll free)
E info@visioneng.com

Vision Engineering Ltd. (France)
ZAC de la Tremblaie, Av. de la Tremblaie
91220 Le Plessis Paté, France
T +33 (0) 160 76 60 00
E info@visioneng.fr

Vision Engineering (India)
T + 91 (0) 80-5555-33-60
E info@visioneng.co.in

Vision Engineering (Brazil)
E info@visioneng.com.br



FM 557119

Vision Engineering Ltd. has been certified for the quality management system ISO 9001:2015 and calibration accreditation ISO 17025:2017.