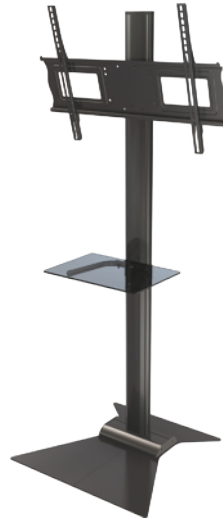




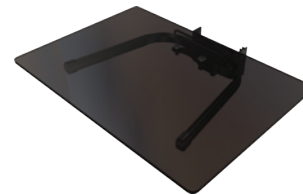
**Carts and Stands**



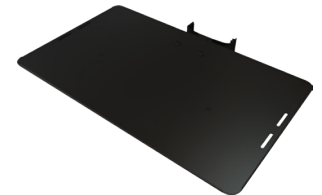
M63



S63



MSG

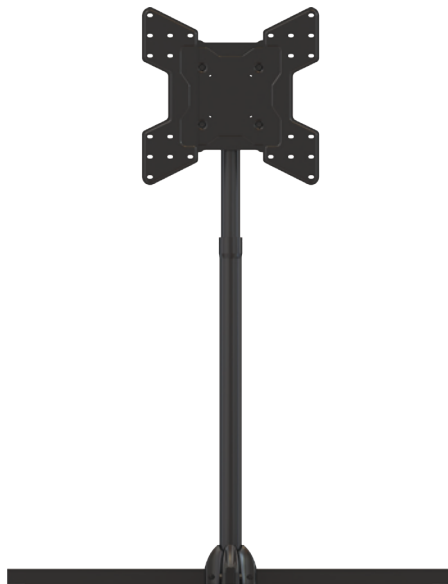


MSM

Optional tempered glass or metal shelf that easily installs after TV is attached

Model	TV Sizes	Max Height Adjustment	Max Mounting Pattern (WxH)	Load Rating
M63	37"-63"	70.75"	723x501mm	150lb
S63	37"-63"	68"	723x501mm	150lb

**Collapsible Floor Stand (optional casters)**



S46P

Model	TV Sizes	Height Adjustment	Max Mounting Pattern (WxH)	Load Rating
S46P	32"-55"	48"-64.5"	400x400mm (expandable to) 723x501mm	100lb

**Installation**

*Ships completely pre-assembled (S46P) or as subassemblies that easily and intuitively bolt together. Optional shelves easily attach pre- or post-installation, without removing the display.*

**Heavy Duty Components**

*Heavy duty joints and casters provide extensive field durability.*

**Fully Adjustable**

*Height of display may be continuously adjusted vertically, post-installation. S46P completely collapses to a 6"x34" footprint.*

**Variety of Solutions**

*Portable and semi-portable solutions for a variety of applications.*

**Expandable Functionality**

*Compatible with narrow, extended landscape displays in Digital Signage applications. Optional accessories provide expanded screen compatibility and functionality.*

**VESA Compatible**

*Series covers all VESA patterns to 700x500mm (expandable).*

**Construction**

*Fabricated from high-grade cold rolled steel and aluminum with durable epoxy powder coat finish. Includes a complete array of high-grade fasteners, in a pre-sorted hardware pack for easy selection.*