

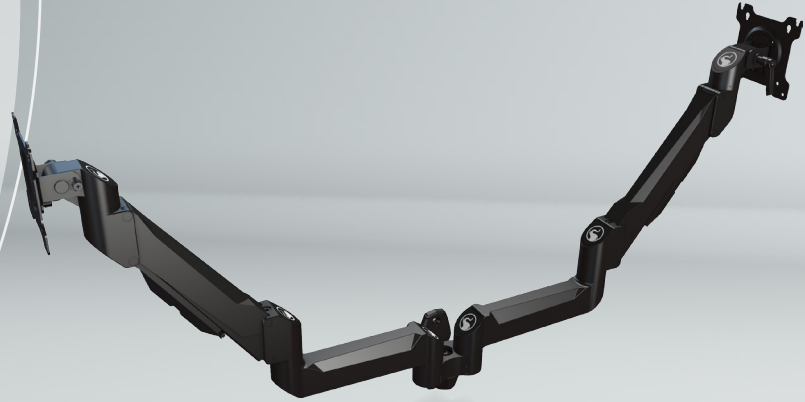
DSA22W

Wall Mounted Dual Link Desktop Arms

for Dual Displays between 10" - 32"

Desktop Arms for Dual Monitor Systems

- Dual link arms support two displays up to 30 lbs each
- Full motion tilt up to 30° forward and 90° backward provides flexibility to achieve the best view
- Easy fingertip adjustment: fine tuning the screen tilt and leveling requires minimal effort
- Up to 90° of side to side roll for perfect screen adjustment to portrait or landscape orientation
- Lockable tilt positioning
- Five swivel points allow for a wide variety of viewing angles and configurations

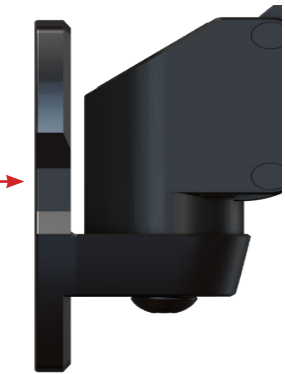


SKU	TV Size	Max VESA	Max Length	Max Load
DSA22W	10-32"	100x100mm	21.86" per arm	30 lb per arm

MOUNTS TO WALL

Arm Mounts Directly to Wall

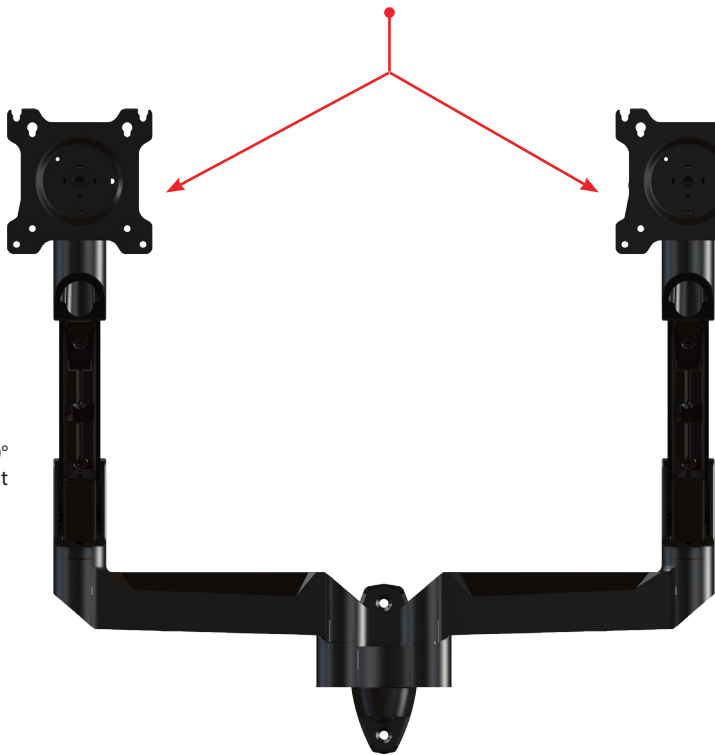
A flat wall plate allows for the arm to connect directly to the wall, with up to 180° swivel at the connection point.



FIVE SWIVEL POINTS

180° to 360° Swiveling Capability

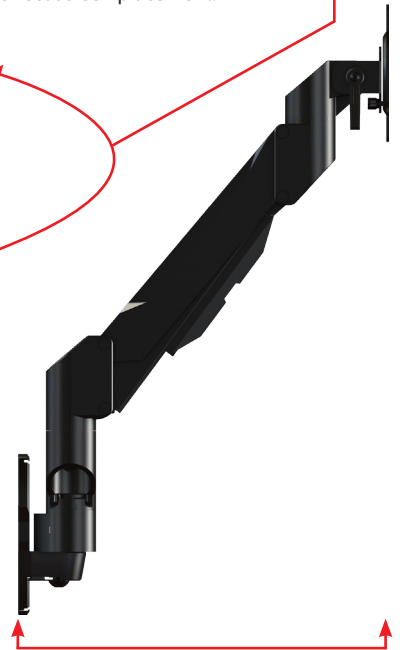
Five connection points allow for either 180° or 360° rotation at each link point to achieve a wide range of viewing angles.



SIDE TO SIDE ROLL

Adjustable Screen Placement

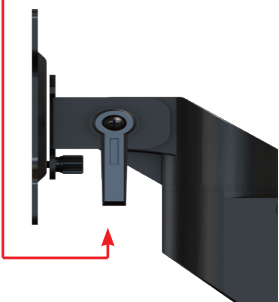
Up to 90° of side-to-side roll allows for perfect screen placement.



LOCKABLE TILT

Locking Tilt Mechanisms

Lockable tilt of up to 30° forward and 90° backwards allows user to achieve perfect viewing position.



DUAL 21"+ ARMS

Articulating Arms Over 21" From Wall

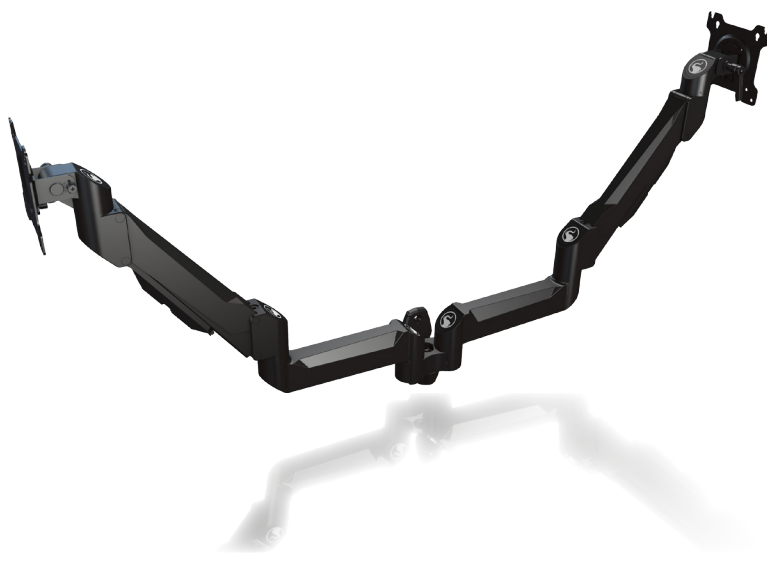
Fully extended (not pictured above), each arm is capable of holding monitors over 21" from the wall surface.

DSA22W Articulating Arm

Wall Mounted Dual Link Articulating Arms

for dual displays between 10" to 32"

1-866-MOUNT-TV
www.crimsonav.com



Attribute	Value
Display size range	10" - 32"
Orientation	Landscape or portrait
Weight capacity	30lbs per arm (132.26kg total)
Max mounting pattern	100x100mm
Max extension	21.86" per arm
Roll	90°
Construction	High-grade cold rolled steel/aluminum
Tilt	-90°/+30°
Color	Black
Model number	DSA22W
Finish	Scratch resistant epoxy powder coat
Warranty	Limited Lifetime

Supporting two displays or monitors between 10" - 32", two dual-link articulating monitor arms mount directly to walls and can be configured to portrait or landscape orientations. The spring-loaded, full motion mounts are easy to adjust and each arm can support monitors up to 30 lbs. Lockable tilts provide a variety of viewing angles for perfect screen placement.

