

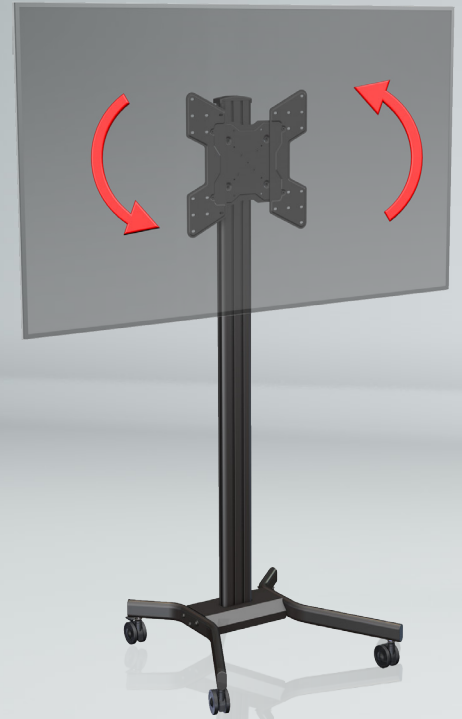
M55VLP Adjustable Height Mobile Cart

With Portrait to Landscape Rotation

for Displays 32" - 55"

Heavy Duty & Ideal for Plasma, LCD, or LED Monitors

- Easy post-installation Landscape to Portrait rotation
- Fits monitors with VESA patterns up to 400x400mm in both Portrait and Landscape orientations
- Continuous vertical position adjustment to 70.75"
- Heavy-duty rubber casters for smooth mobility
- Lockable incremental tilt adjustment
- Integrated cable management for a clean look
- Available with dual back-to-back configuration (M55DVLP)

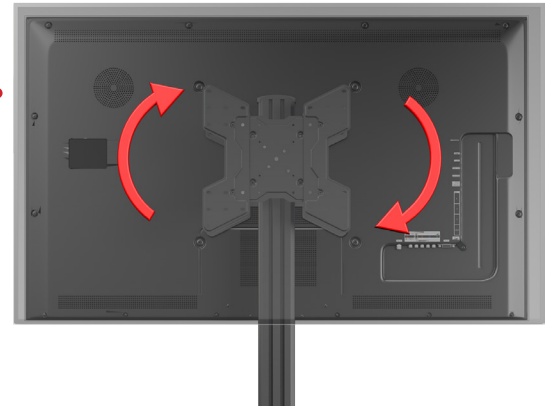
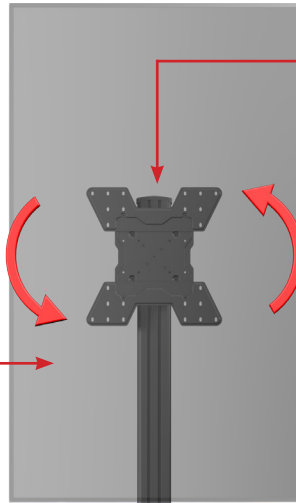


SKU	TV Size	VESA	Max Height	Max Load
M55VLP	32-55"	400x400mm	70.75"	150 lbs

CONTINUOUS TILT

+15/-5 Degrees Tilt

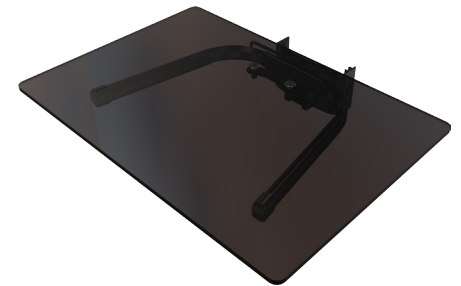
The M55VLP mounting plate has continuous tilt of up +15°/-5° for ideal screen placement.



POST INSTALLATION ROTATION

Landscape to Portrait

An adapter allows for easy post-installation display rotation to either portrait or landscape orientation



OPTIONAL SHELVING ACCESSORY

Adjustable Tempered Glass or Metal Shelf

With Crimson's tempered glass (MSG) or metal (MSM) attachable shelf, the M55VLP can support up to 50lbs of additional components.

HEAVY DUTY CASTERS AND CABLE MANAGEMENT

Rubber Casters for Smooth Mobility

Heavy duty rubber casters provide for smooth mobility even when at full weight capacity, while an integrated cable management system provides for a clean look.



M55VLP

Heavy Duty Mobile Cart

With portrait to landscape rotation

1-866-MOUNT-TV
www.crimsonav.com



Attribute	Value
TV size range	32" - 55"
Weight capacity	150lbs (68.03kg)
Max mounting pattern	400x400mm
Vertical adjustment	Continuous vertical adjustment to 70.75"
Orientation	Post-installation rotation to landscape or portrait
Tilt	+15°/-5° with incremental tilt lock
Optional accessories	Optional accessory glass (MSG) or metal (MSM) shelves; vertically adjustable and can be easily installed or removed without removing TV monitor
Construction	Aluminum/high-grade cold rolled steel
Product finish	Scratch resistant epoxy powder coat
Color	Black
Model number	M55VLP
Warranty	10 years

Heavy duty construction makes this cart ideal for Plasma, LCD, or LED monitors up to 150 lbs. An adapter allows for post installation screen rotation to either portrait or landscape orientation. Heavy duty rubber casters ensure smooth mobility on all surfaces, and base fits through standard door openings. Fully adjustable tilt and height for perfect screen placement.

