

# DC120 Ladibug™ FLYER

The First *WIRELESS*  
Document Camera!

**Lumens**™  
Brighter Teaching

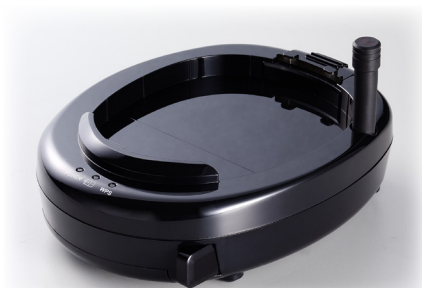
Teachers can now present lessons from anywhere in the room while displaying on the screen or Interactive Whiteboard.

## Key Features:

- **No Wires!**
- **Only for your Hi-Definition DC120 Ladibug™ Document Camera**
- **High-Definition Image Clarity**
- **Excellent Color Reproduction Quality**
- **Built-in Microphone (via USB only)**
- **Flexible Gooseneck Design**
- **Simply attach the FLYER accessory to any DC120 Ladibug™ Document Camera**
- **5 Year Unlimited REPLACEMENT Warranty**



**Ladibug**  
Document Cameras



**FLYER - Battery-operated base**



[www.MyLumens.com](http://www.MyLumens.com)

# Specifications

## DC-A11

### WIRELESS

**Wireless Standard** : IEEE 802.11 n  
**Wireless Working Frequency** : 2.4 GHz ISM radio band  
**Frame Rate** : Up to 20 fps  
**Transmission distance** : 45 feet (15m)  
**Application** : Ladibug™ (Windows and Mac OSX.)

### BATTERY

**Battery work with DC120** : 8 hrs  
**Charging time** : 3 hrs  
**Power Consumption** : 24W (Maximum)  
**Battery replacement warranty** : 1 year

### ACCESSORY

**Accessory** : Dongle, Power Cord, Power Adapter, USB connector, Quick Start Guide  
**Others** : Collocating Product : DC120

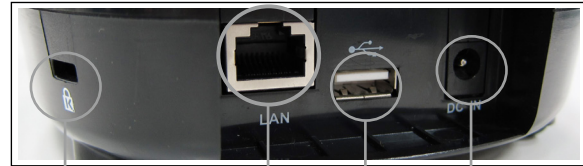
### OTHER

**Temperature range** : Centigrade : 5°C~35°C, Fahrenheit : 41°F~95°F  
**Weight** : 1.2 lbs (535g)  
**Dimension** : 7.2" x 5.6" x 1.9" (182 x 141 x 49 mm)(L x W x H)  
**Dimension with Antenna** : 7.2" x 5.6" x 3.7" (182 x 141 x 93 mm)(L x W x H)

### COMPLIANCE

**Lumens™ Ladibugs comply with these important standards** :  
FCC-EMI, SAR, CE-EMC, CE-LVD, CE-R&TTE, UL, RoHS, WEEE, ErP.

### I/O CONNECTIONS



Kensington Lock Port   Ethernet   USB 2.0   DC IN

# Specifications

## DC120

### IMAGING

**Sensor Technology** : CMOS  
**Output Resolution** : XGA (1024 x 768), SXGA (1280x960), UXGA (1600x1200)  
**Frame Rate** : Up to 30 fps  
**Zoom Capacity** : 7x mechanical and 8x digital (only Lumens software)  
**Capture Area** : 16.5" x 12.4" (420 x 315 mm)

### LIGHTING

**Lamp Type** : Built-in LED light

### OUTPUT

**USB Support** : USB 2.0 High Speed (480 Mbps) for independent use or seamless integration with interactive whiteboards

### SOFTWARE

**Ladibug™ Software Included** : Support PC Windows 8, 7, XP, Vista and Mac OSX.  
**Video Recording with Audio**: Record video with various compression codecs.  
**Image Capture** : Single or continuous capture of JPEG images  
**Annotation**: Add annotations directly to live image

### DRIVER

**USB Driver** : Support TWAIN, UAC/UVC for integration with interactive whiteboards including Promethean™, SMART™, Hitachi Starboard™, Mimio™, and others.

### SECURITY

**Anti-Theft** : Kensington lock port  
**Bolt Holes on Bottom for Mounting** : VESA standard 2.95" x 2.95"

### ACCESSORIES

**Standard** : 10 foot (3m) USB cable  
**USB 2.0 High Speed Extension** : No power cable required.  
**Optional Accessory** : 15 foot (5m) USB extension cable, Microscope adapter - 1.1"(28mm)(x1), Padded carrying case

### OPERATION FUNCTIONS

**Auto Exposure** : Yes  
**Auto White Balance** : Yes  
**Auto Focus** : Yes  
**Auto Tune** : Yes  
**Photo/Text Mode** : Choose photo/text mode  
**Image Capture** : Capture images to the computer via USB connection  
**Audio/Video Recording** : Yes, via USB by using Ladibug™ software  
**Built-in Microphone** : Built into camera head for USB use  
**Image Rotation** : Full screen image rotation from 0 to 180 degrees  
**Annotation** : Yes, by using Ladibug™ software  
**USB Support Output Modes** : VGA(640X480), SVGA(800X600), XGA (1024 x 768), SXGA (1280x960), UXGA (1600x1200), WXGA (1280x800)

### OTHER

**Weight** : 2.2 lbs (1 kg)  
**Dimensions Operating** : 17.1" x 4.2" x 12.2" (350 x 106 x 380 mm)(L x W x H)  
**Dimensions Folded** : 5.4" x 4.2" x 11" (136 x 106 x 280 mm)(L x W x H)  
**Warranty** : 5-year unlimited REPLACEMENT warranty covers all hardware including lamps

### COMPLIANCE

**Lumens™ Ladibugs comply with these important standards** :  
FCC-EMI, CE-EMC, RoHS, and WEEE.

### I/O CONNECTIONS



Kensington Lock Port   USB 2.0

**Lumens™**  
Brighter Teaching

**Touchboards**  
205 Westwood Ave, Long Branch, NJ 07740  
Phone: 866-94 BOARDS (26273) / (732)-222-1511  
Fax: (732)-222-7088 | E-mail: sales@touchboards.com