

Operation Manual

rev-2013-12-02

Software

Data Logger



Data Logger Software

1. Overview of the Data Logger	3
2. Install the Data Logger Software	4
3. Start the Data Logger Software	8
4. Find Gauges connected to the computer	9
4.1 Find DM-2 Gauges.....	9
4.2 Find DM32s (all models).....	10
5. Set location for saving data files	14
6. View pressure readings for selected gauge	15
7. Choose gauges from which to log data	16
8. Start and Stop Logging.....	17
9. Open file created by Data Logger.....	18
10. Run a device connected to the gauge	20
11. Uninstall the Retrotec Data Logger	22

1. Overview of the Data Logger

The user can run the Data Logger on any computer, laptop, or tablet running a full version of Windows.

The Data Logger lets the user record [Channel A] and [Channel B] pressure readings to a spreadsheet file in real time. The software can thus be used to record pressure values directly for research or analytical work.

The Data Logger will log pressure data from Retrotec DM-2 or DM32 family digital manometers. When the data is saved, each line of data is time stamped and marked with the serial number of the gauge. Each time logging is started, a new file is created, with a time-stamped filename which is automatically generated.

2. Install the Data Logger Software

The latest version of the Data Logger software is always available on the internet.

You can install the Data Logger as part of the DM32 Software Suite or individually.

For the software suite, which also includes the DM32 Configurator and the Virtual Gauge Software, use:

<http://www.retrotec.com/downloads/SmartGaugeSoftwareSuite.html>

When your computer is connected to the internet, you can use the following link to download an installer for the software, or to install the software directly on your computer. Once installed, you can uninstall using the procedure outlined in section 10, from your computer Control Panel. Once installed, every time you launch the program and are connected to the internet, it will check for updates and offer to download them and update your Data Logger software.

<http://www.retrotec.com/software/dm32logger/publish.html>

Click on the “Install” button in the window that opens, as shown in Figure 1: Install the Data Logger software from the internet.

Follow all the steps in the figures that follow in order to install the software on your computer. If you are using the Software Suite installer, the data logger will be one of three applications that you will install.

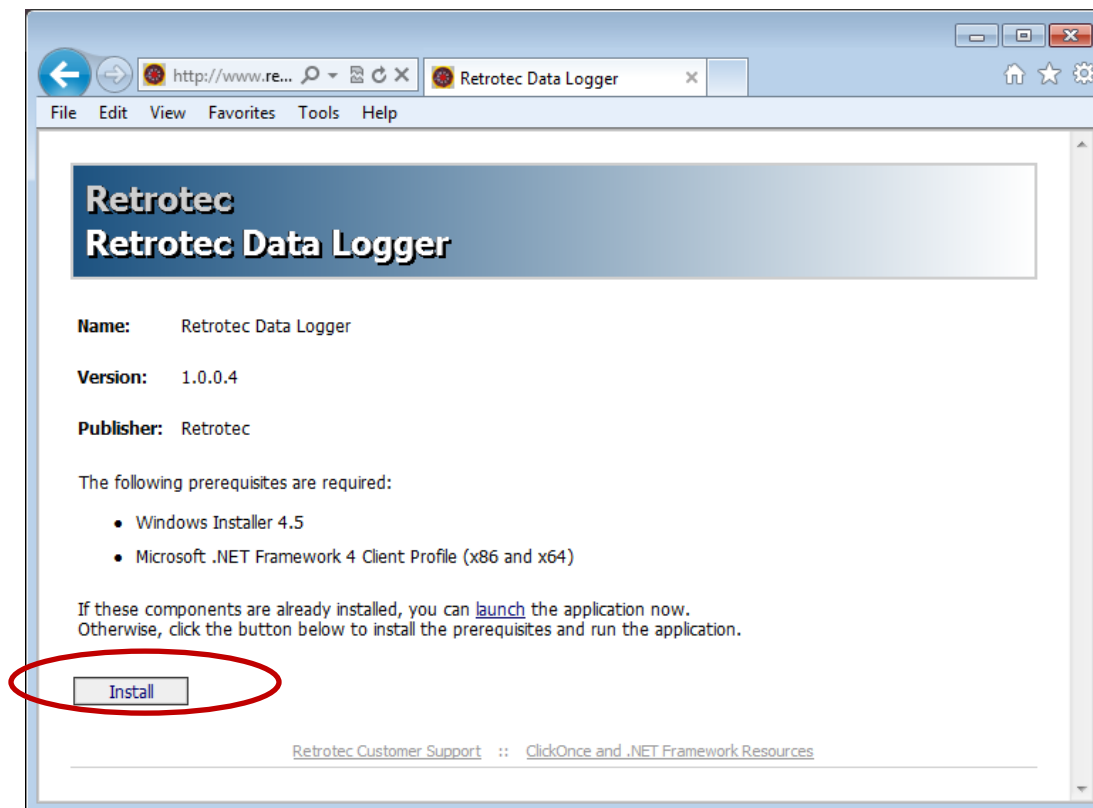


Figure 1: Install the Data Logger software from the internet

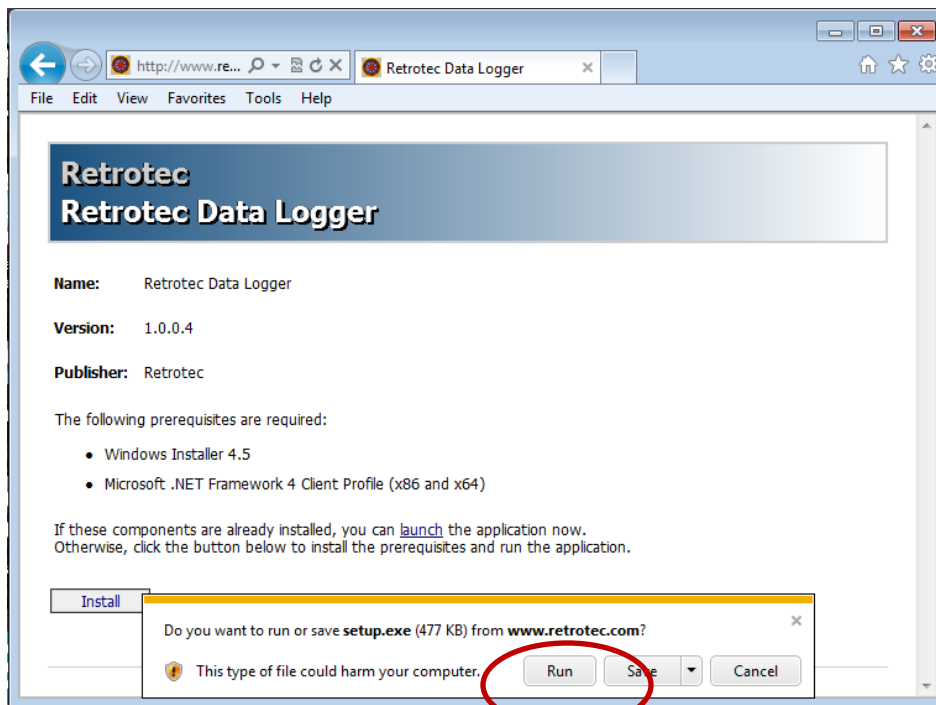


Figure 2: Security settings on some computers generate a warning and you must click [Run] to start the installation

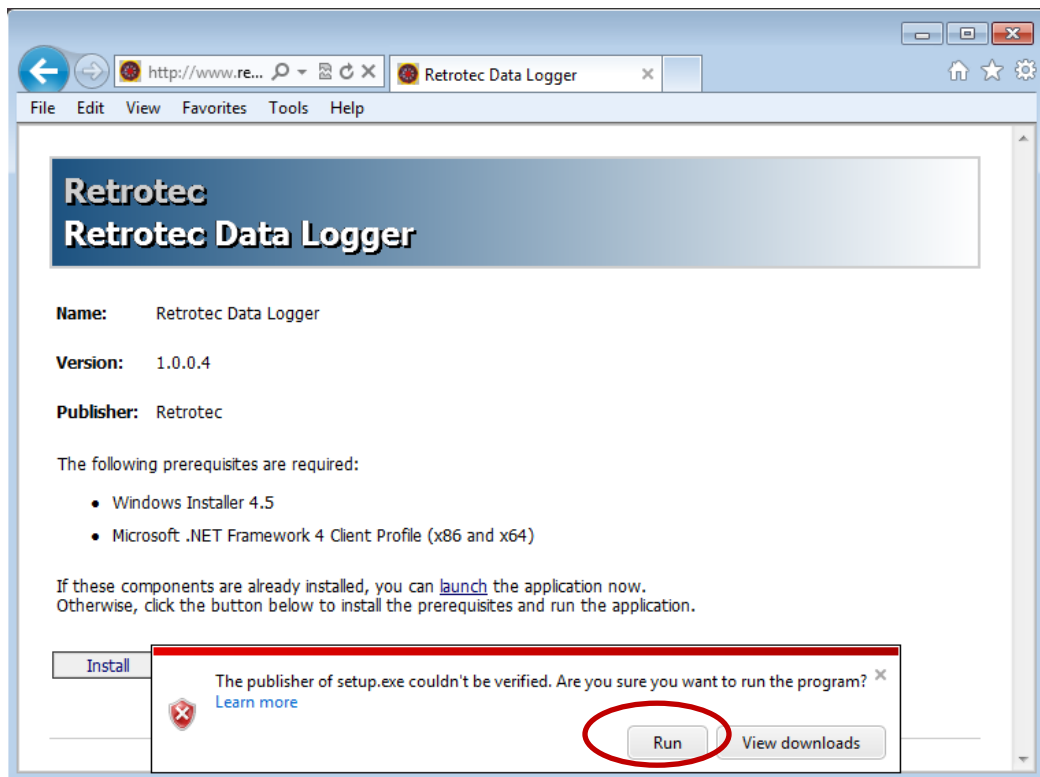


Figure 3: If your computer cannot verify the publisher as Retrotec, you will see this warning. OK to click [Run]

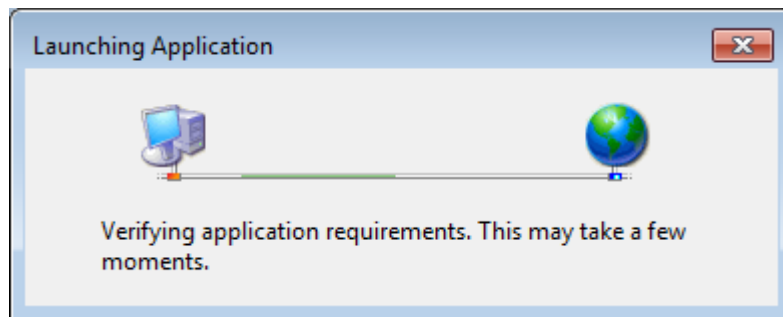


Figure 4: Once the installer is downloaded it checks that your computer has all the pre-requisites to run the Data Logger

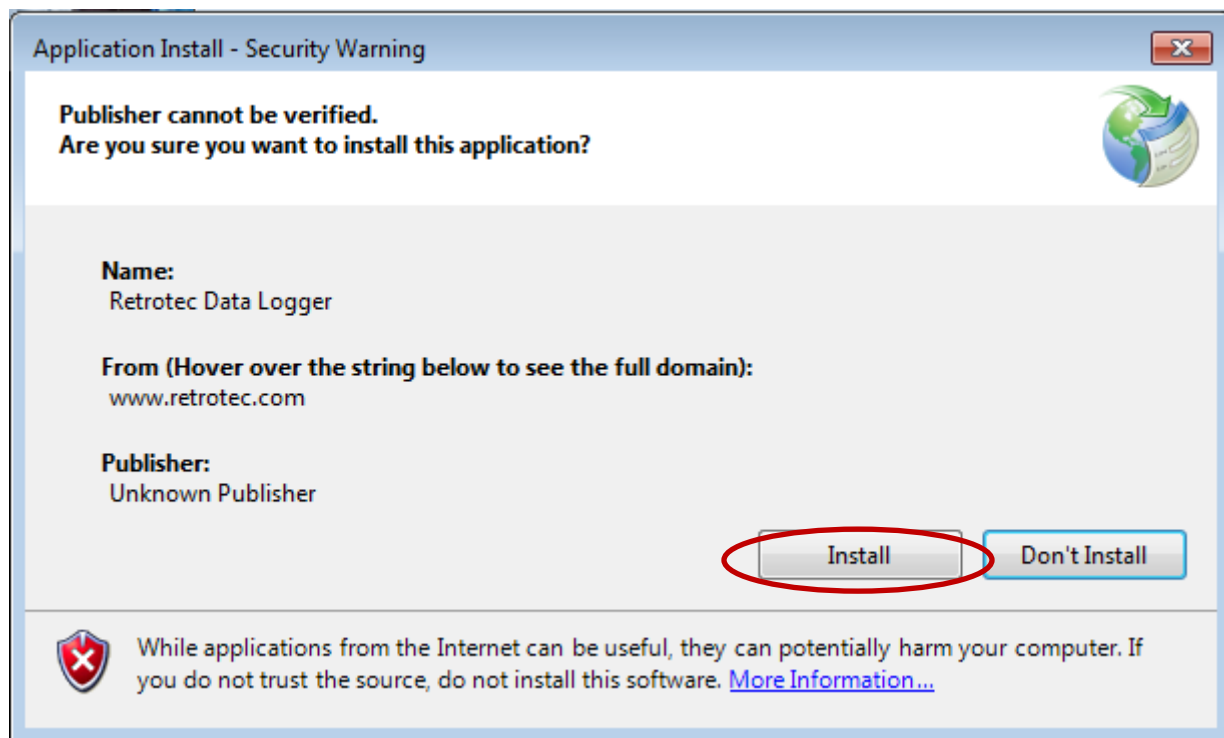


Figure 5: The installer may put up this warning before starting, click on [Install]

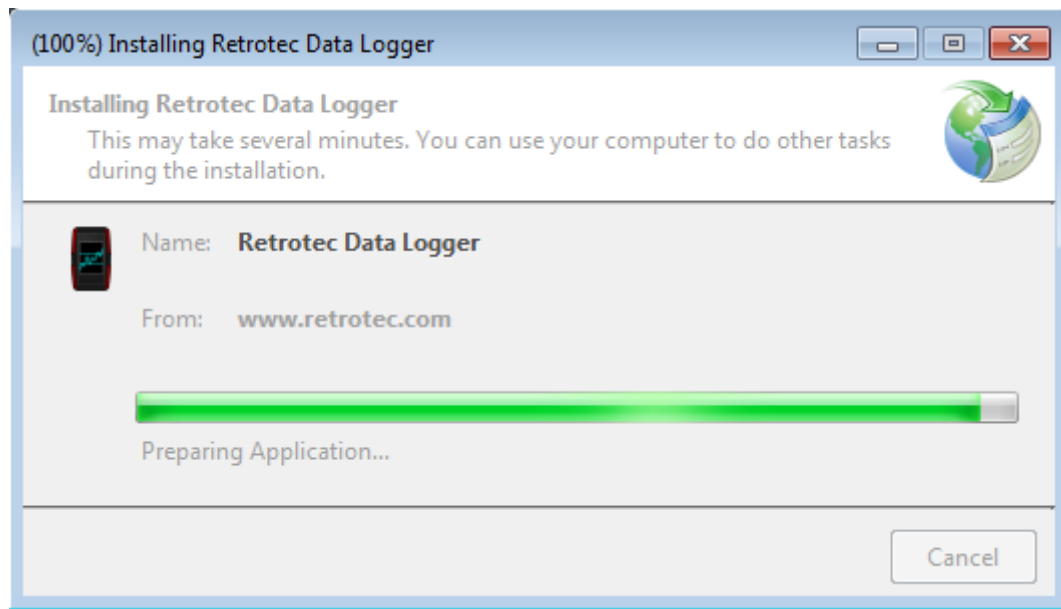


Figure 6: Once all security checks are made, the installer runs, installs, and creates a shortcut on your desktop

Once installed, the Retrotec Data Logger shortcut will appear on your desktop as shown in Figure 7, and the software will open, showing the window as in Figure 8. Every time you run the software and are connected to the internet, the software will check that the version is the latest, and download updates as necessary. If you are not connected to the internet, the update process is skipped and the software just starts.

3. Start the Data Logger Software

To start the Data Logger software, click on the desktop shortcut that was created by the installer, shown in Figure 7. The window in Figure 8 will open.

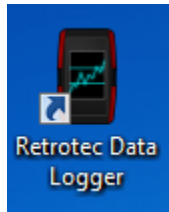


Figure 7: Click the desktop icon to start the Data Logger

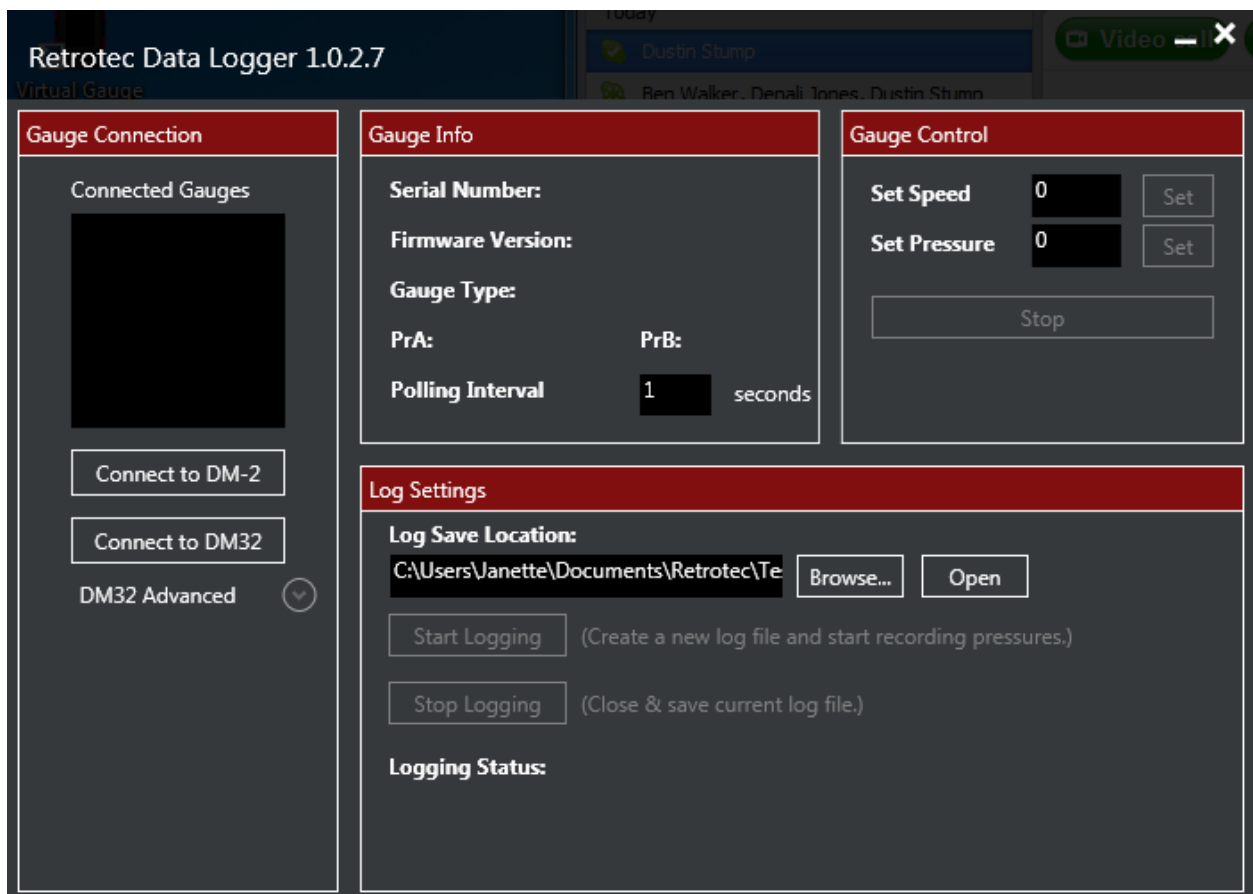


Figure 8: Main Data Logger window opens with no connected gauges

The next step is to connect to the gauges from which you wish to record pressures.

4. Find Gauges connected to the computer

The Data Logger software can find all powered up Retrotec gauges connected to the computer either using a USB cable, a Network cable, or WiFi (for WiFi capable DM32 models), and record the pressures being monitored on all of them.

4.1 Find DM-2 Gauges

All powered up DM-2 gauges connected to the computer will be found and added to the “Connected Gauges” list when [Connect to DM-2] is clicked in the “Gauge Connection” section as shown in Figure 9.

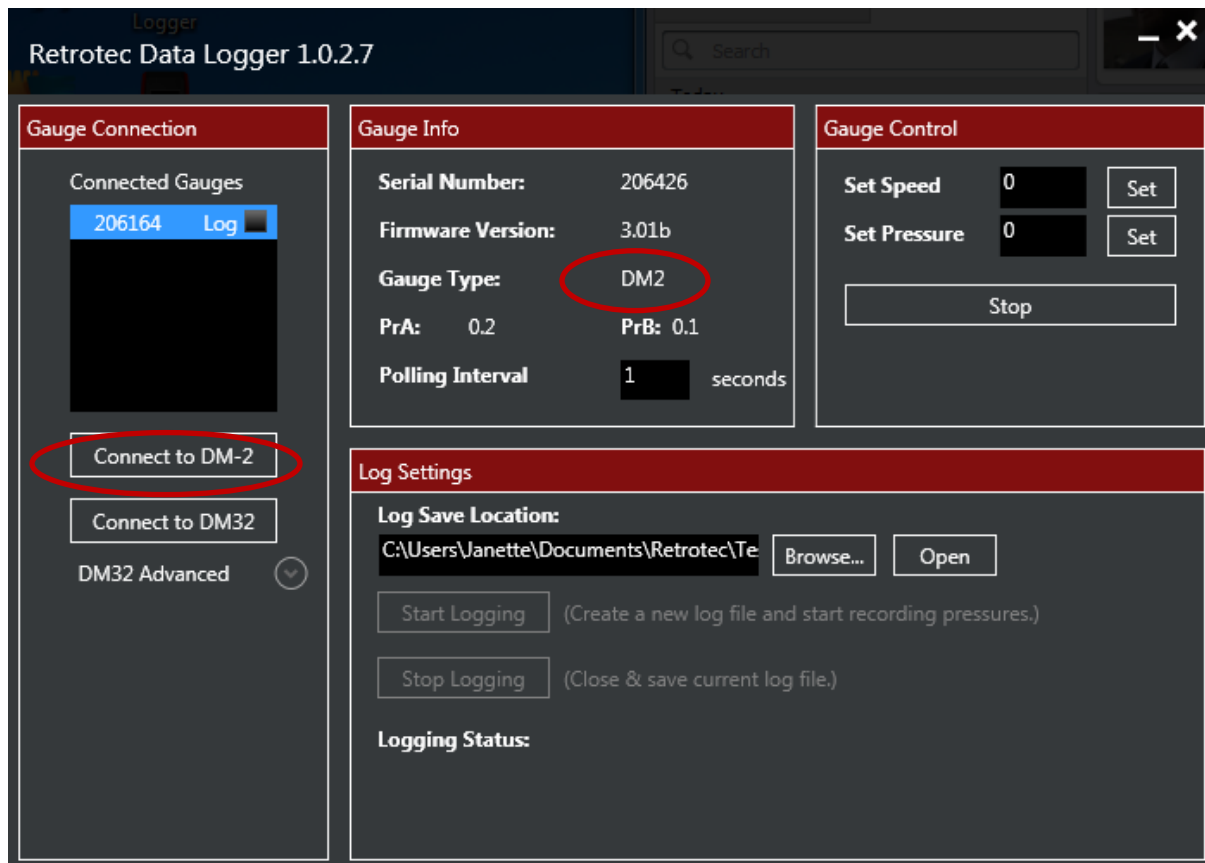


Figure 9: Connect to DM-2 by clicking [Connect to DM-2]

If no DM-2 gauges are found, a notification pops up, warning the user of the situation as shown in Figure 10. Reasons that the Data Logger cannot find a DM-2 include: USB cable not plugged in to computer, USB cable not plugged into gauge, faulty USB cable, faulty USB hub, USB hub not plugged into mains power, DM-2 not powered on (DM-2 can power themselves down after a user set time period or can run out of batteries).

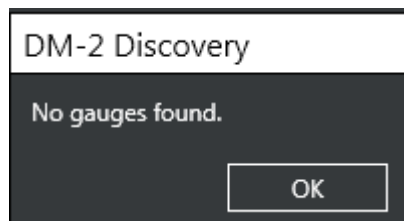


Figure 10: User is notified if no connected DM-2 is found

4.2 Find DM32s (all models)

All powered up Retrotec DM32s connected to the computer will be found and added to the “Connected Gauges” list when [Connect to DM32] is clicked in the “Gauge Connection” section as shown in Figure 13. Any DM32s that are powered down but connected to mains power will also be found.

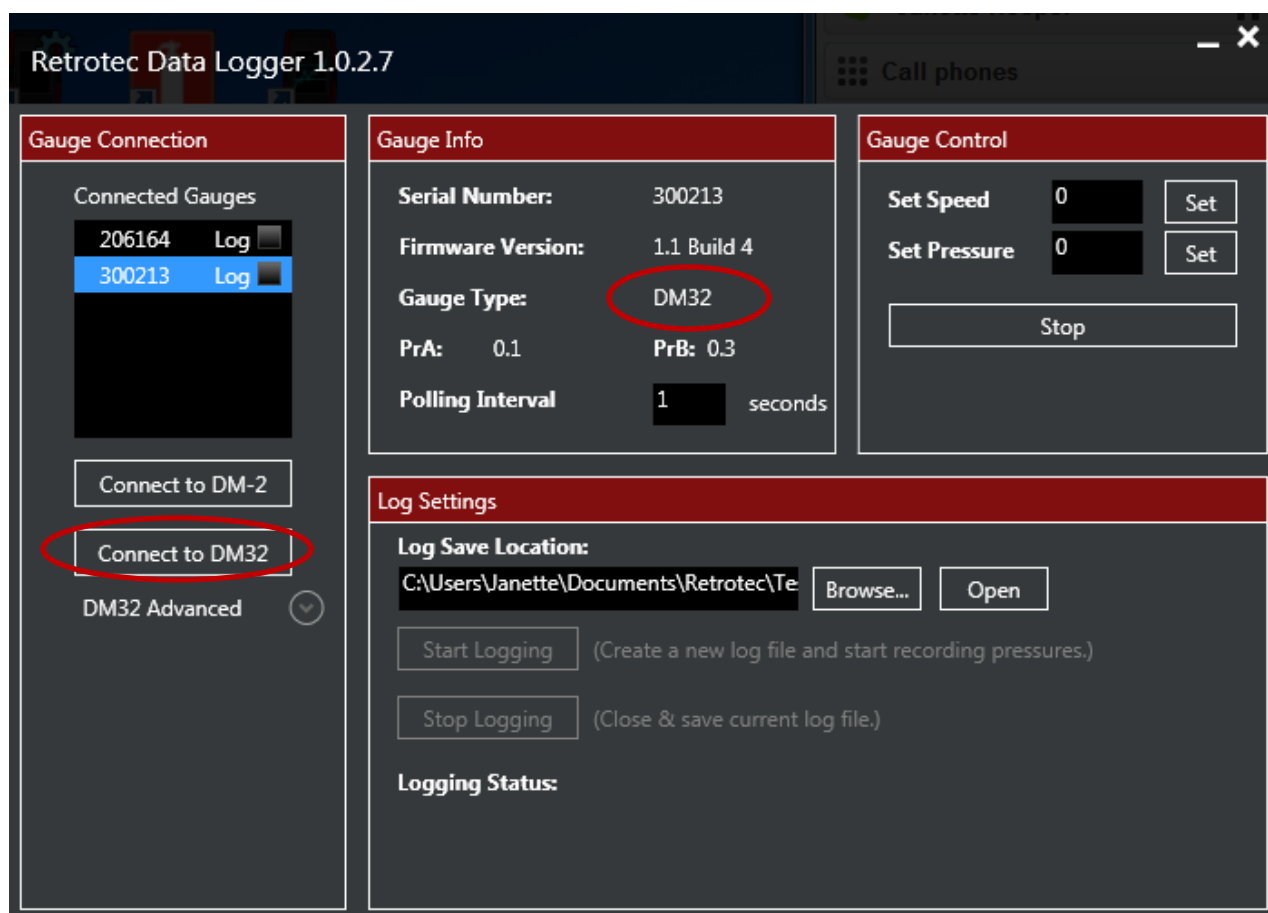


Figure 11: Find DM32s connected to computer by clicking [Connect to DM32]

The Data Logger can find DM32s that are connected to the computer. Since the DM32s can be connected to the computer multiple ways, the user can specify how the Data Logger looks for gauges.

Normally the Data Logger will find gauges connected in any way to the computer, but the “DM32 Advanced” drop down shown in Figure 12 lets the user specify which connection types to check.

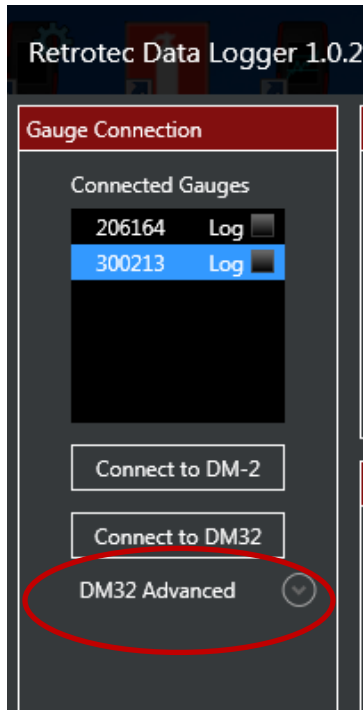


Figure 12: Specify DM32 connection type using the "DM32 Advanced" drop down

As shown in Figure 13, the user can specify to look on a “Network” port, on “USB” ports or “Both”.

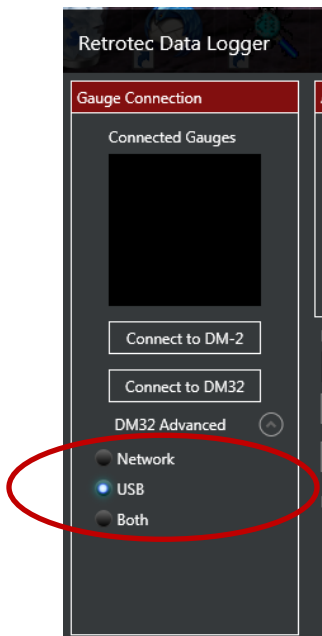


Figure 13: Find DM32s connected to this computer via “USB”, Ethernet “Network”, or “Both”

It is recommended that DM32s be connected to a computer using the “Network” connector since it is the most reliable control connection.

When “Network” is chosen, the user has the option of letting the computer manage the finding of all gauges on the network by selecting “Auto”, or they can select “Manual” and enter a particular IP address to connect to, as shown in Figure 14.

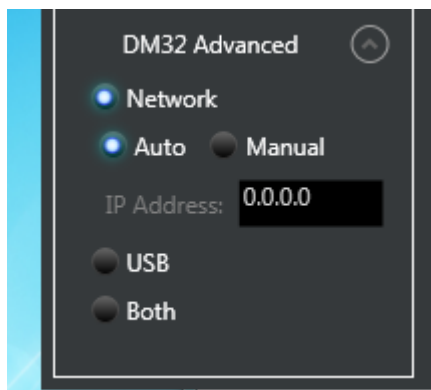


Figure 14: Connect to all gauges on a network, or a particular one

If no DM32s are found using any of the specified connection methods, the user is notified of the failure with a pop up box as shown in Figure 15. It is recommended that DM32s be connected to a computer using the “Network” connector since it is the most reliable control connection.

One thing to check if the Data Logger cannot find your DM32 is that the gauge is powered on (gauges can power themselves down after a user set time period or can run out of battery charge).

Reasons that the Data Logger cannot find a Network connected gauge include: [Network] settings set to “Disabled”, [Network] settings on the gauge not set to IP Address for the same network that the computer is connected to, Ethernet cable not plugged in to computer, Ethernet cable not plugged into “Network” port on gauge, faulty Ethernet cable, faulty Ethernet hub/switch/router, USB hub not plugged into mains power, computer network not functioning.

Reasons that the Data Logger cannot find a USB connected gauge include: USB cable not plugged in to computer, USB cable not plugged into gauge, faulty USB cable, faulty USB hub, USB hub not plugged into mains power.

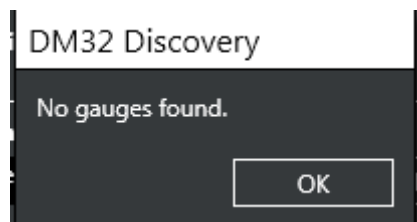


Figure 15: User warned if no DM32s found using specified connection method

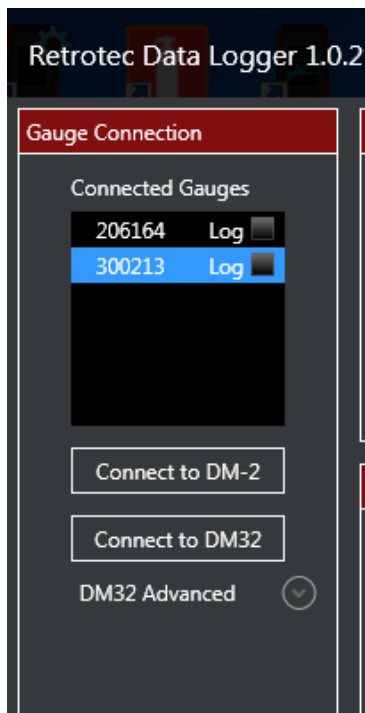


Figure 16: Gauges show up in "Gauge Connection" list once they are found - blue means selected

Once gauges are found, they show up in the "Connected Gauges" list in the main window as shown in Figure 16.

If the Data Logger loses connection with any of the gauges, you get a warning as shown in Figure 17

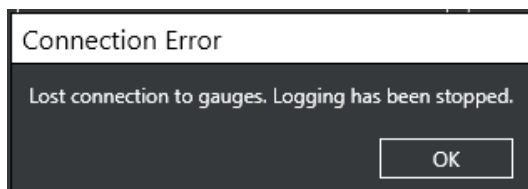


Figure 17: Warning message lets you know if any gauges drop their connection during logging

The next step is to tell the Data Logger where to save the data files it will create.

5. Set location for saving data files

Click [Browse] on the main window and use the windows that open (shown in Figure 19) to locate the directory you want your logs saved into, and click [OK]. The chosen location for the files is then shown on the main window, as shown in Figure 18.

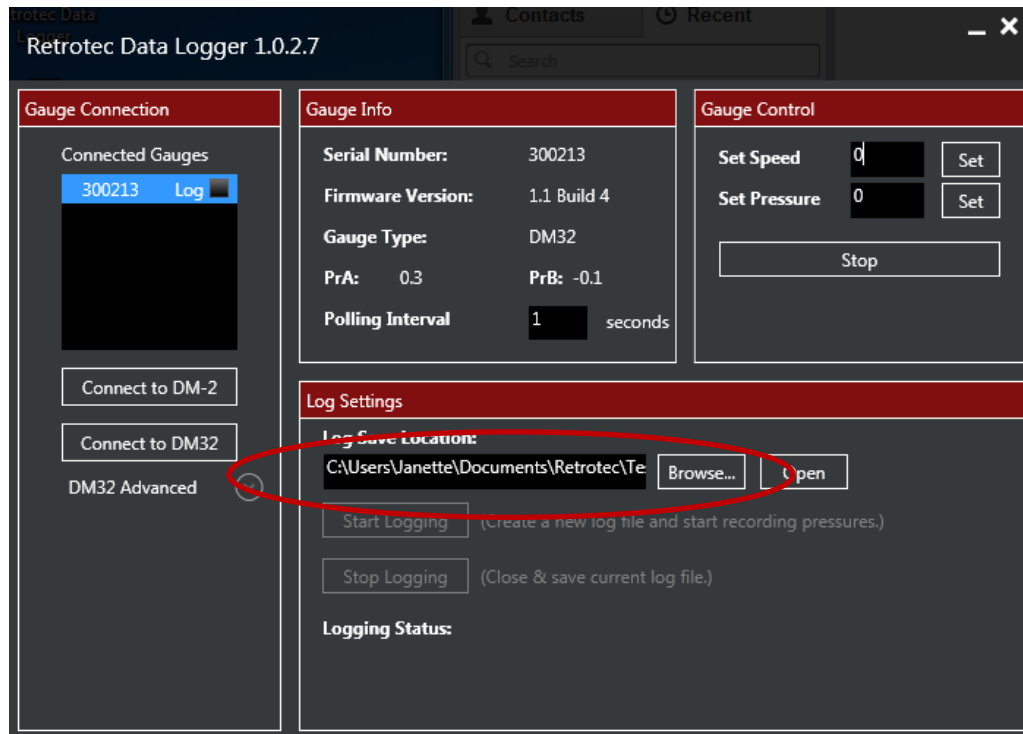


Figure 18: Choose a location on the computer to save data files

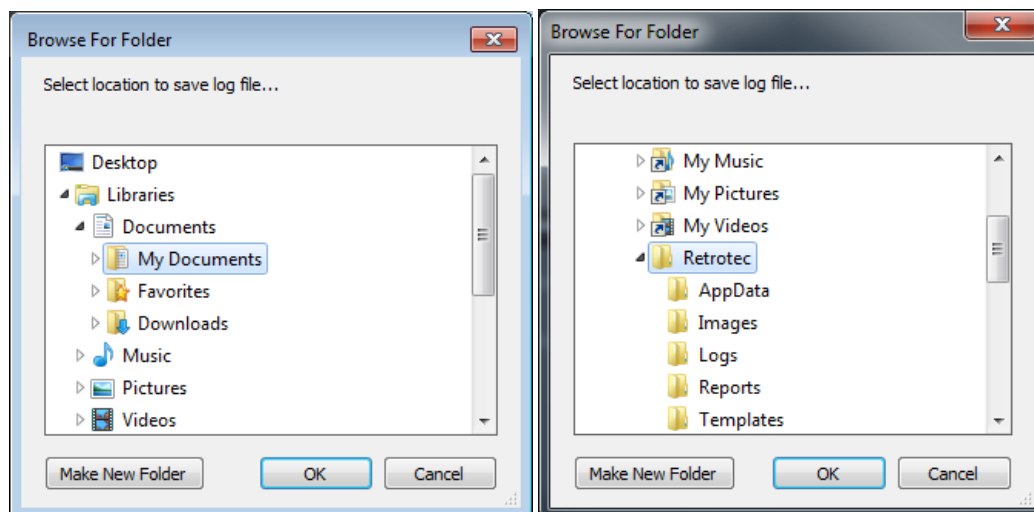


Figure 19: Click [Browse...] and browse to Location where logged files are to be saved, click [OK]

6. View pressure readings for selected gauge

Select a gauge in the "Connected Gauges" list to see pressure readings in real time in the "Selected Gauge:" section of the main window, as shown in Figure 20 for a DM32 gauge and in Figure 21 for a DM-2 gauge. The selected gauge is shown highlighted in blue.

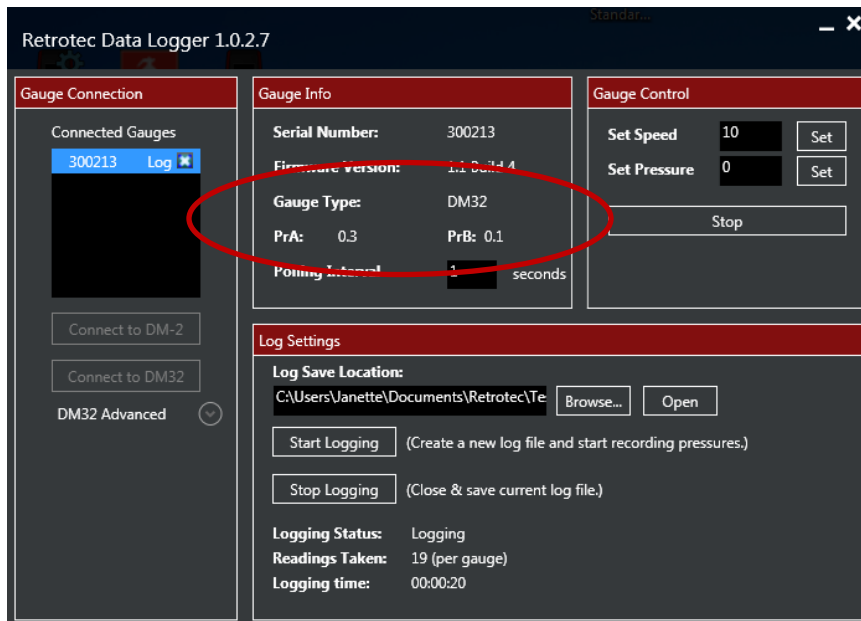


Figure 20: Select a DM32 gauge in the "Connected Gauges" list to see pressure readings in real time

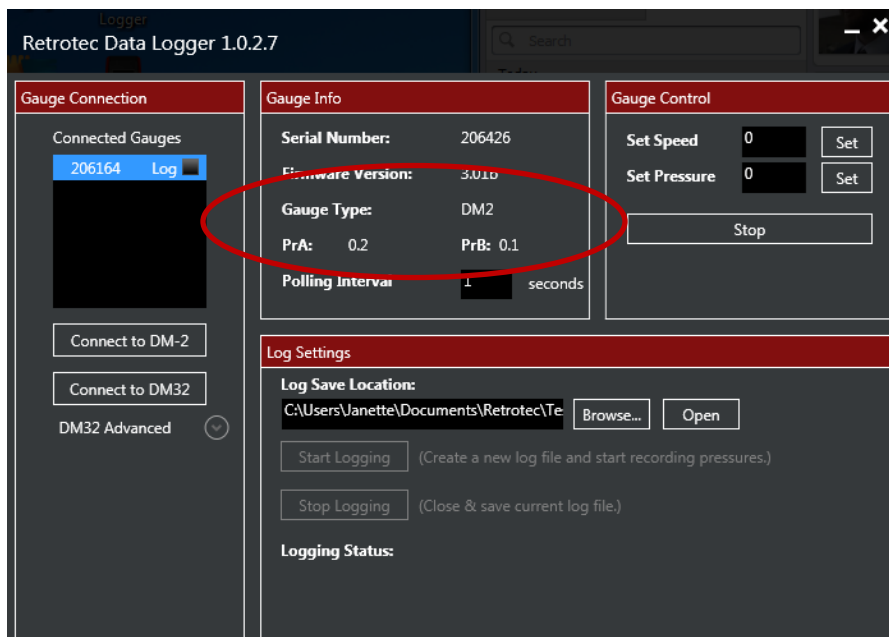


Figure 21: Select a DM-2 in the "Connected Gauges" list to see pressure readings in real time

7. Choose gauges from which to log data

Click the boxes next to the gauges in the list you wish to log data from as shown in Figure 22. Any gauges showing the x beside “Log” will be included in the logged output file after you click on “Start Logging”. To see the value of pressures on a particular gauge in real time, click on the name of the gauge in the list so it is selected with blue.

The Data Logger will record data into the log file from all chosen gauges.

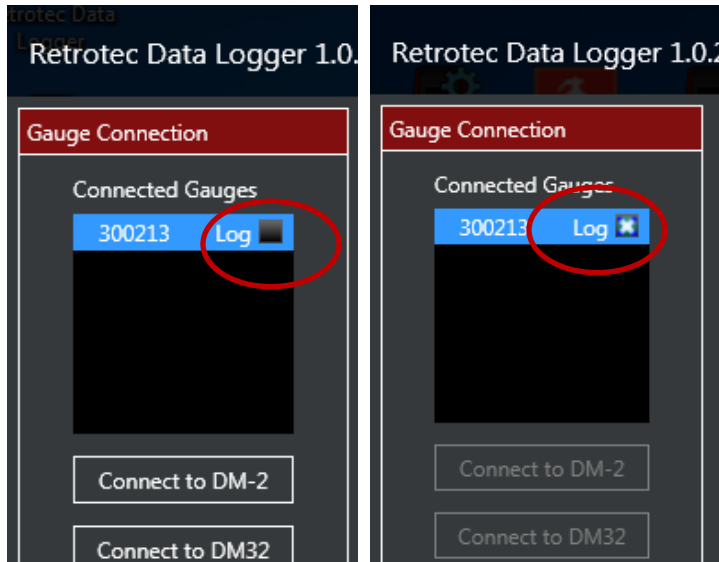


Figure 22: Click the boxes next to the gauges in the list you wish to log data from

8. Start and Stop Logging

Clicking the [Start Logging] button shown in Figure 23 will create a log file which is time and date stamped with the time at the commencement of file creation, and then start logging the pressure values being read from the gauge(s) into that file. Readings will be taken from every gauge in the “Connected Gauges” list. Reading frequency, how often readings are taken, is specified in the item called “Polling Interval” in the “Selected Gauge” section. Default frequency is 10 readings per second (corresponding to a polling interval of 100 milliseconds).

Reading and logging of pressure values will continue until the [Stop Logging] button is clicked. The data file is then closed and will be available for opening and reading by a spreadsheet handling program such as Microsoft Excel, as shown in Figure 26. It is a plain text file so any text editor can open it as well, as shown in Figure 27.

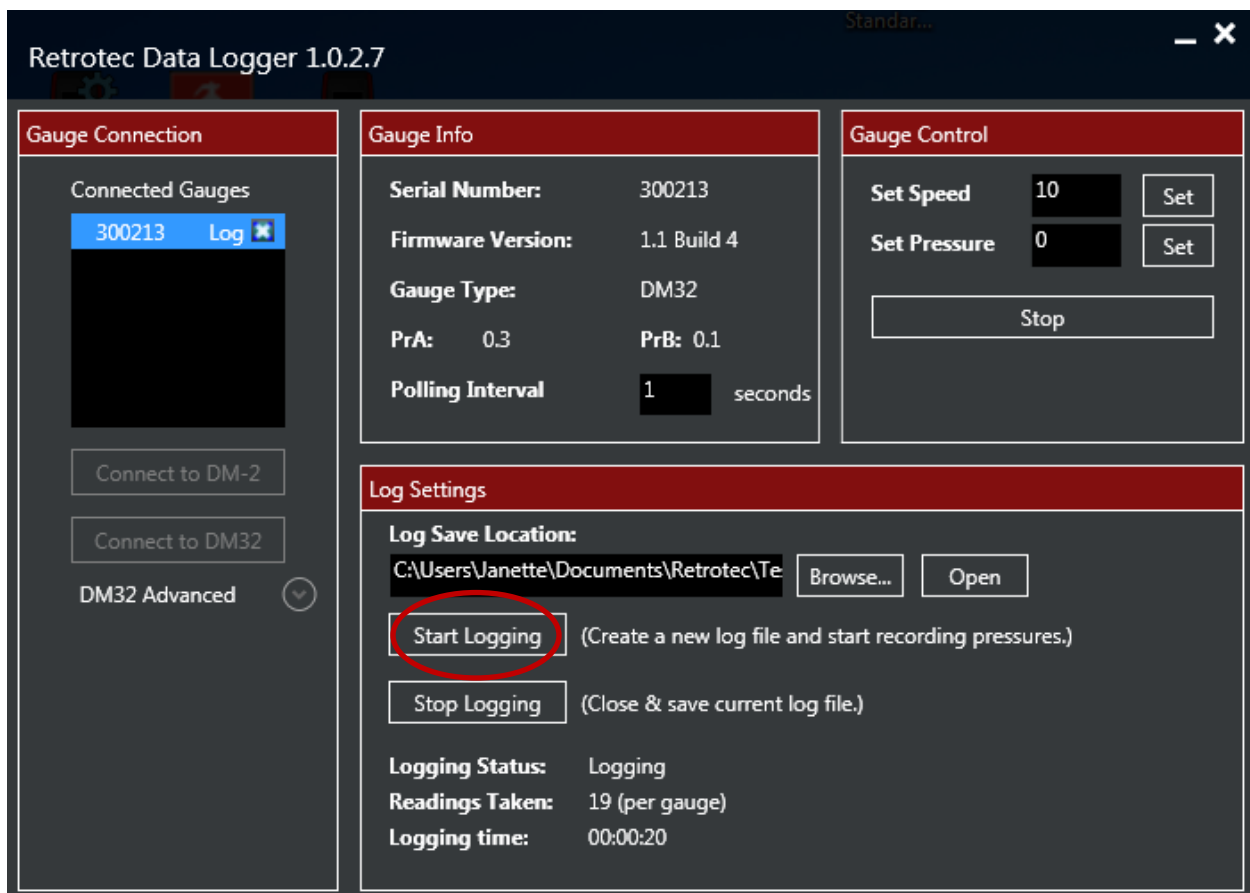


Figure 23: Use Data Logger software to create a data file containing pressure values from connected gauges

9. Open file created by Data Logger

Clicking the [Open] button shown in Figure 24 opens the folder containing all the logs created by the Data Logger. The folder opens in your standard file explorer, which will be something like that shown in Figure 25.

Use Microsoft Excel or another spreadsheet handling program to open the .csv data file created by the Data Logger software, shown in Figure 26.

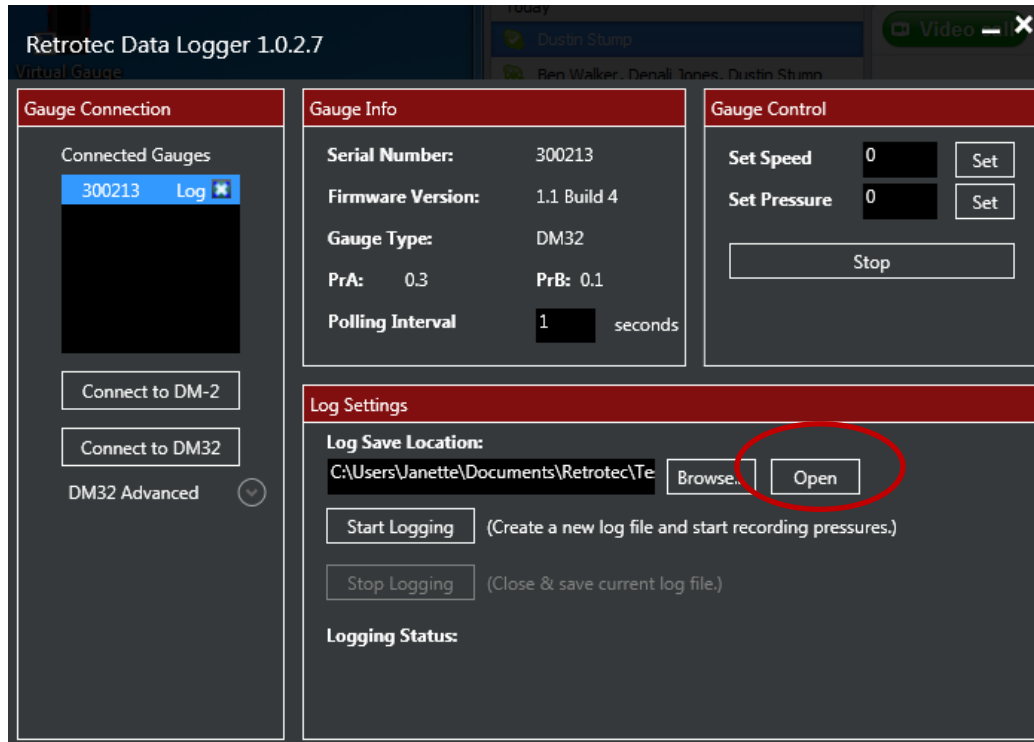


Figure 24: Click the [Open] button to open the folder containing all the data logs created

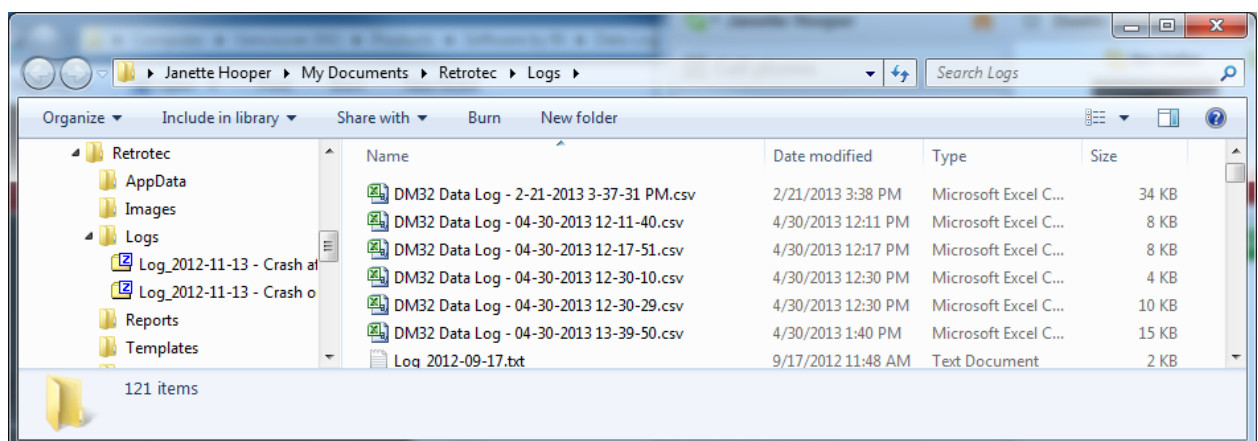


Figure 25: Folder opens containing all the logs - select one to view data

A1	Gauge Type						
A	B	C	D	E	F	G	H
Gauge Type	Serial Number	Device	Range	Fan Speed	Channel A Pa	Channel B Pa	TimeStamp
DM32	300213	200	Open	0	0.5	0.3	05/29/2013 15:45:36
DM32	300213	200	Open	0	0.3	0.3	05/29/2013 15:45:37
DM32	300213	200	Open	0	0.3	0.3	05/29/2013 15:45:38
DM32	300213	200	Open	0	0.3	0.3	05/29/2013 15:45:39
DM32	300213	200	Open	0	0.5	0.1	05/29/2013 15:45:41
DM32	300213	200	Open	0	0.5	0.1	05/29/2013 15:45:42
DM32	300213	200	Open	0	0.3	0.3	05/29/2013 15:45:43
DM32	300213	200	Open	0	0.3	0.3	05/29/2013 15:45:44
DM32	300213	200	Open	0	0.3	0.3	05/29/2013 15:45:45
DM32	300213	200	Open	0	0.1	0.1	05/29/2013 15:45:46
DM32	300213	200	Open	0	0.1	0.1	05/29/2013 15:45:47
DM32	300213	200	Open	0	0.1	0.1	05/29/2013 15:45:48
DM32	300213	200	Open	0	0.1	0.1	05/29/2013 15:45:49
DM32	300213	200	Open	0	0.3	0.1	05/29/2013 15:45:50
DM32	300213	200	Open	0	0.1	0.1	05/29/2013 15:45:51
DM32	300213	200	Open	0	0.1	0.1	05/29/2013 15:45:53
DM32	300213	200	Open	0	0.1	0.1	05/29/2013 15:45:54
DM32	300213	200	Open	0	0.1	0.1	05/29/2013 15:45:55
DM32	300213	200	Open	0	0.3	0.1	05/29/2013 15:45:56
DM32	300213	200	Open	0	0.1	0.1	05/29/2013 15:45:57
DM32	300213	200	Open	0	0.3	0.1	05/29/2013 15:45:58
DM32	300213	200	Open	0	0.1	0.1	05/29/2013 15:45:59
DM32	300213	200	Open	0	0.3	0.1	05/29/2013 15:46:00
DM32	300213	200	Open	0	0.1	0.1	05/29/2013 15:46:01

Figure 26: The CSV file created by the Data Logger can be opened in Microsoft Excel

Because the data is saved as a .csv (or comma separated values) file, it can also be opened using any plain text editor such as Windows Notepad, as shown in Figure 27.

```

Gauge Type, Serial Number, Device, Range, Fan Speed, Channel A Pa, Channel B Pa, TimeStamp
DM32, 300213, 200, open, 0, 0.5, 0.3, 05/29/2013 15:45:36
DM32, 300213, 200, open, 0, 0.3, 0.3, 05/29/2013 15:45:37
DM32, 300213, 200, open, 0, 0.3, 0.3, 05/29/2013 15:45:38
DM32, 300213, 200, open, 0, 0.3, 0.3, 05/29/2013 15:45:39
DM32, 300213, 200, open, 0, 0.5, 0.1, 05/29/2013 15:45:41
DM32, 300213, 200, open, 0, 0.5, 0.1, 05/29/2013 15:45:42
DM32, 300213, 200, open, 0, 0.3, 0.3, 05/29/2013 15:45:43
DM32, 300213, 200, open, 0, 0.3, 0.3, 05/29/2013 15:45:44
DM32, 300213, 200, open, 0, 0.3, 0.3, 05/29/2013 15:45:45
DM32, 300213, 200, open, 0, 0.1, 0.1, 05/29/2013 15:45:46
DM32, 300213, 200, open, 0, 0.1, 0.1, 05/29/2013 15:45:47
DM32, 300213, 200, open, 0, 0.1, 0.1, 05/29/2013 15:45:48
DM32, 300213, 200, open, 0, 0.1, 0.1, 05/29/2013 15:45:49
DM32, 300213, 200, open, 0, 0.3, 0.1, 05/29/2013 15:45:50
DM32, 300213, 200, open, 0, 0.1, 0.1, 05/29/2013 15:45:51
DM32, 300213, 200, open, 0, 0.1, 0.1, 05/29/2013 15:45:53
DM32, 300213, 200, open, 0, 0.1, 0.1, 05/29/2013 15:45:54
DM32, 300213, 200, open, 0, 0.1, 0.1, 05/29/2013 15:45:55
DM32, 300213, 200, open, 0, 0.3, 0.1, 05/29/2013 15:45:56
DM32, 300213, 200, open, 0, 0.1, 0.1, 05/29/2013 15:45:57
DM32, 300213, 200, open, 0, 0.3, 0.1, 05/29/2013 15:45:58

```

Figure 27: Data file can be viewed as text in a plain text editor such as Windows Notepad

10. Run a device connected to the gauge

The gauge generates an output control signal on the “Speed Control “ output which is normally used to control an attached calibrated fan. The Data Logger lets users drive such an attached device from the software, by setting the “Set Speed” as shown

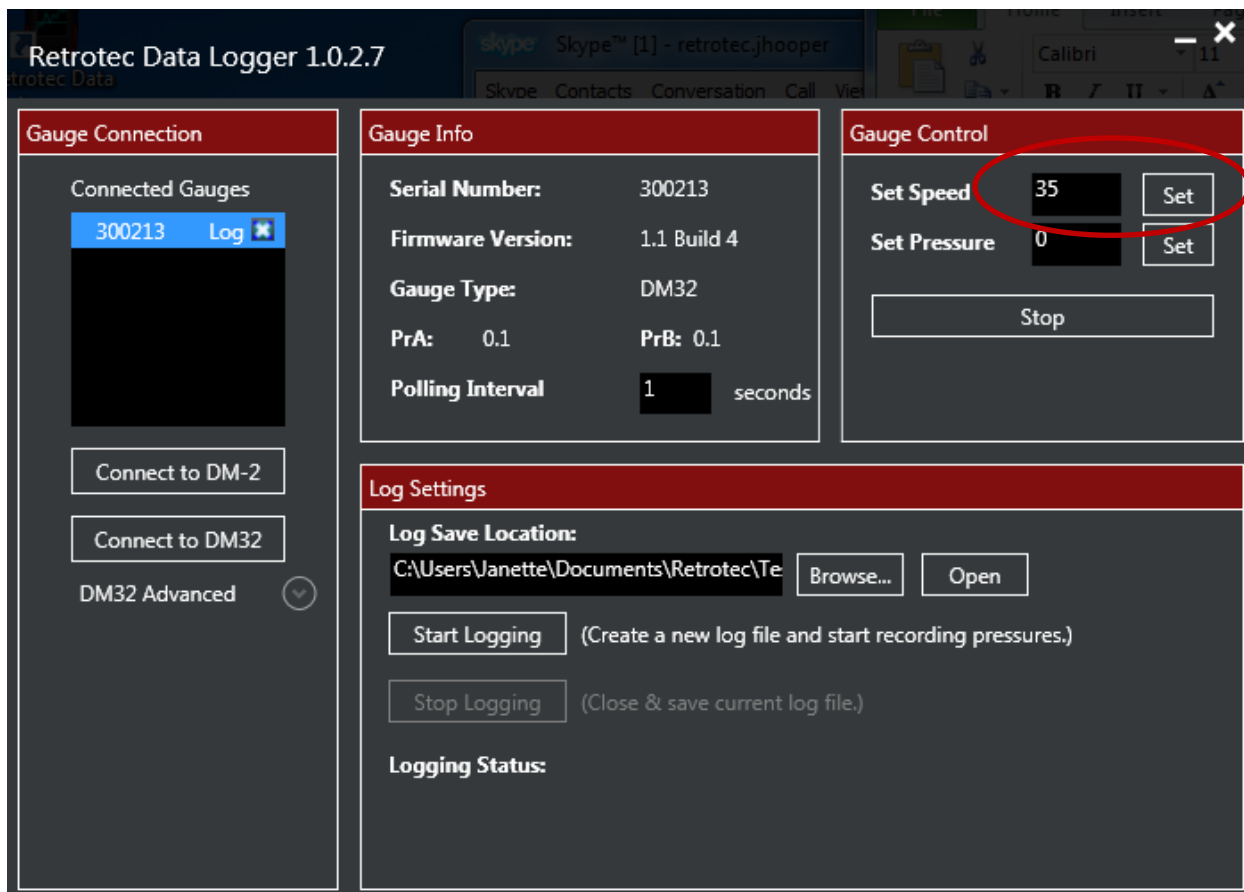


Figure 28: Control the speed control signal sent to the device attached to the gauge

The gauge also includes firmware which will change the “Speed Control Output” until the pressure on Channel A reaches a particular value – the “Set Pressure”. Click [Set] beside “Set Pressure” after entering a numeric value as shown .

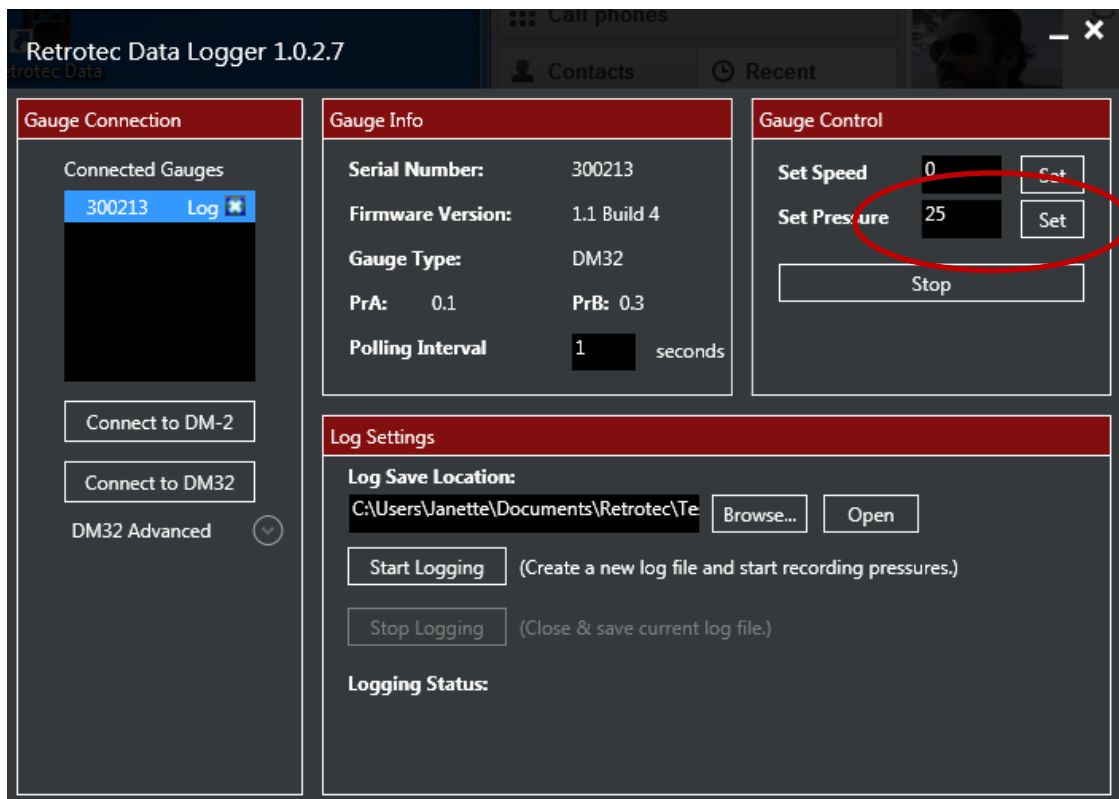


Figure 29: Tell the gauge to control the speed output until the pressure on channel A reaches the set pressure

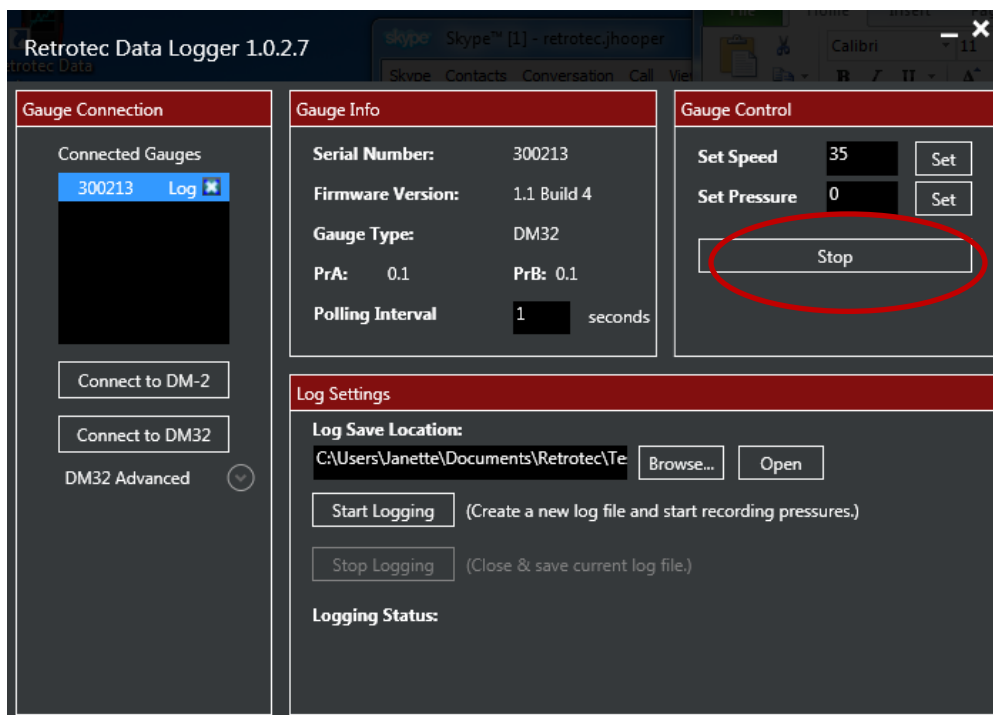


Figure 30: Click [Stop] to tell the gauge to stop the connected device - set the control output to zero

11. Uninstall the Retrotec Data Logger

