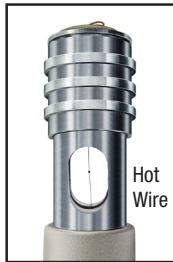


Order Code	Description
<input type="checkbox"/> DPMA1	PosiTector Standard with DPM A Probe
<input checked="" type="checkbox"/> DPMA3	PosiTector Advanced with DPM A Probe

PosiTector® DPM Dew Point Meter	Compare PosiTector Gage Bodies	
Features	Standard	Advanced
Auto Log mode runs unattended on batteries for up to 50 hours or continuously via USB	●	
Enhanced Auto Log mode turns the gage off between readings for up to 8 months of battery life. Each reading can be uploaded to PosiSoft.net or an FTP server using WiFi. Automatically group readings into batches at daily, weekly, or monthly intervals.		●
User defined limits for all parameters—visible and audible warnings. Send email alerts when connected to WiFi.		●
Two year warranty on body AND probe	●	●
Reading Storage Capacity	2500 datasets per probe	100,000 datasets in up to 1,000 batches
Onscreen Batch Annotation — Add notes, change batch names and more with built-in QWERTY keyboard		●
Store thickness, profile, environmental and wall thickness measurements in individual batches		●
Wet bulb temperature can be displayed and recorded		●
Trend Charts graph readings in real-time		●
Connection Options		
Sealed USB port for fast, simple connection to a PC and to supply continuous power. USB cable included.	●	●
Bluetooth 4.0 technology for data transfer to a mobile device running the PosiTector App or optional portable printer. BLE API available for integration into third-party software.		●
WiFi technology wirelessly synchronizes with PosiSoft.net and downloads software updates		●



PosiTector DPMA1



Hot Wire

Removeable Integral Probe with Wind Speed Sensor	Probe Model DPM A	
		Surface Temperature
	Air Temperature	✓
	Wet Bulb Temperature*	-
	Relative Temperature	✓
	Dew Point Temperature	✓
	Surface Temperature minus Dew Point Temperature	✓
	Wind Speed	✓

*Wet Bulb Temperature displayed/recorded on PosiTector Advanced (3) models only

DPM A Probe includes:

- Ambient temperature, surface temperature, and humidity sensors from PosiTector DPM Integral Probe plus a hot wire anemometer
- Choice of wind speed measurement units — m/s, km/h, mph, ft/s, ft/m, knots
- Auto-rotating display for inverted use

DeFelsko® Inspection Instruments

All Gages Feature...

Simple

- All readings are constantly updated and displayed simultaneously
- No need to consult complex tables or use a slide rule calculator
- Alarms indicate when climate conditions are unsuitable for painting
- RESET feature instantly restores factory settings

Durable

- Solvent, acid, oil, water and dust resistant — weatherproof
- Shock-absorbing, protective rubber holster with belt clip
- Two year warranty on gage body AND probe

Accurate

- Fast response precision sensors provide accurate, repeatable readings
- SmartTrend™ Indicators identify rising, falling or stable readings
- Certificate of Calibration included showing traceability to NIST (Long Form)
- Conforms to national and international standards including ISO and ASTM

Versatile

- High Contrast LCD with backlit display
- Auto Log mode records environmental parameters at user selected time intervals
- Celsius/Fahrenheit switchable
- Selectable display languages
- Flip display enables right-side-up viewing
- Uses alkaline or rechargeable batteries (built-in charger)

Order Code	Description
<input type="checkbox"/> DPMA1	PosiTector Standard with DPM A Probe
<input checked="" type="checkbox"/> DPMA3	PosiTector Advanced with DPM A Probe

Powerful

- Hold function freezes the display allowing measurements to be manually recorded
- Screen Capture — save screen images for record keeping and review
- Sealed USB port for fast, simple connection to a PC and to supply continuous power. USB cable included.
- Software updates via web keep your gage current
- Every stored measurement is date and time stamped
- Software Solutions for viewing, analyzing & reporting data. See page 3 for a complete overview of these options.

Specifications	Range	Accuracy	Resolution
Surface Temperature	-40° to 80° C	± 0.5° C	0.1° C
	80° to 190° C	± 1.5° C	
	-40° to 175° F	± 1° F	0.1° F
	175° to 375° F	± 3° F	
Air Temperature	-40° to 80° C	± 0.5° C	0.1° C
	-40° to 175° F	± 1° F	0.1° F
Humidity	0 to 100%	± 3%	0.1%
Wind Speed	0 to 20 m/s	± 3% Full Scale	0.1 m/s
	0 to 44 mph		0.1 mph
Dew Point	-60° to 80° C	± 3° C*	0.1° C
	-76° to 175° F	± 5.4° F*	0.1° F

*Dependent on RH. See www.defelsko.com/TdAccuracy for more information.



Award Winning Compatibility!

PosiTector body accepts all PosiTector 6000, 200, RTR, SPG, DPM, SST, SHD and UTG probes easily converting from a coating thickness gage to a surface profile gage, dew point meter, soluble salt tester, Shore hardness durometer or ultrasonic wall thickness gage.



Comes complete with PosiTector gage body, DPM A probe, environmental sensors, protective rubber holster with belt clip, wrist strap, 3 AAA batteries, instructions, nylon carrying case with shoulder strap (DPM/DPMA/DPMD), hard shell carrying case (DPMS), protective lens shield, Long Form Certificate of Calibration traceable to NIST, USB cable, two (2) year warranty

SIZE: 159 x 31 x 31 mm (6.25" x 2.4" x 1.2")

BODY WEIGHT: 150 g (5.3 oz.) without batteries

CONFORMS TO: ISO 8502-4, BS 7079-B4, ASTM D3276, IMO PSPC, SSPC-PA7 and US Navy NSI 009-32.

©DeFelsko Corporation USA 2017. All Rights Reserved. Technical Data subject to change without notice. • PDPM.v.LW/W1712

DeFelsko®
Inspection Instruments

DeFelsko Corporation 800 Proctor Ave., Ogdensburg, New York 13669-2205 USA
Toll Free 1-800-448-3835 • Tel: +1-315-393-4450 • Fax: +1-315-393-8471
techsale@defelsko.com • www.defelsko.com

Made in U.S.A.

PosiSoft® Suite of Software

Four FREE and unique ways to view and report your PosiTector and PosiTest data

PosiSoft Desktop — PC/Mac

Powerful desktop software for downloading, viewing, printing and storing measurement data. No internet connection required.

- Import readings directly from the gage via USB or from legacy PosiSoft desktop versions
- Synchronize measurement data including readings, notes and pictures to and from PosiSoft.net
- Import/Export Templates and Jobs to share with other users
- **NEW** Import PDF forms and overlay **Custom Fields** for automatic population of inspection and measurement data
- Report preview automatically refreshes as changes are made



PosiSoft.net — Web-based

A web-based application offering secure centralized management of readings. Access your data from any web-connected device.

- Synchronize data when connected via USB or WiFi
- Synchronize measurement data including readings, notes and pictures with PosiSoft Desktop and PosiTector App
- Securely store measurement data in the cloud and share with authorized users via a secure login



Jobs Batches Readings

PosiTector App — Mobile

Mobile app connects PosiTector Advanced instruments, the PosiTector SmartLink and the PosiTest AT-A to your *iOS* or *Android* smart device.

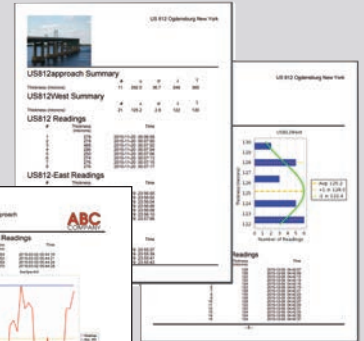
- Auto pairing Bluetooth BLE connection
- Automatically generate user-formatted reports and share via email, text, cloud storage services like Dropbox, and more
- Export readings to PosiSoft Desktop or synchronize readings to and from PosiSoft.net for further reporting and archival options



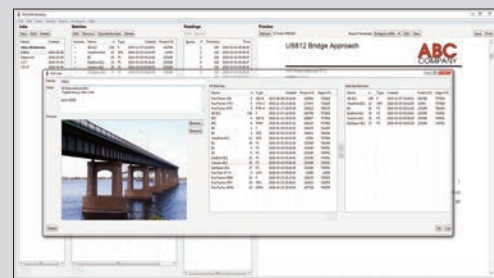
PosiSoft Custom PDF Report Generator

Easily create reports from your measurement data in seconds.

featured on
PosiSoft Desktop
PosiSoft.net
PosiTector App

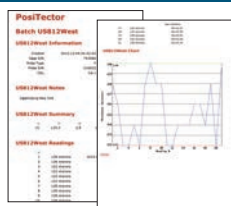


- Include inspection information such as on-site pictures, screen captures, notes and more to communicate important details
- Create and save multiple custom layouts as templates – insert cover pages, add logos/images, and select font and point size
- Select the information to include for each product type – charts, histograms, readings, time stamps and more
- Compile multi-batch reports from one or more probes and instrument types
- Export readings as comma separated value (.CSV) files which can easily be imported into Excel and other supporting applications



Jobs feature consolidates batches into groups to keep measurement data organized and to quickly create multi-batch reports (not available on PosiTector App)

PosiSoft USB Drive — Gage Based



A simple gage interface to retrieve data in a manner similar to USB flash drives, cameras, or digital audio players. No software to install or internet connection required.

- View and print readings and graphs using universal PC/Mac web browsers and file explorers
- Measurement data can be printed quickly from a formatted HTML report or exported in .CSV format for further analysis in spreadsheets
- Simple file management - Copy and paste measurement data from the PosiTector to a local folder on your computer, network folder or cloud drive
- Access stored screen captures (snapshots) of the PosiTector display