

# MCC DAQ Software

## Quick Start

Go to [www.mccdaq.com/swdownload](http://www.mccdaq.com/swdownload) for the latest version of each software package.

**DAQami • Universal Library (UL)\* • ULx for NI LabVIEW • TracerDAQ**

\* Universal Library is a programming library available on Windows, Linux, and Android platforms. UL for Windows also includes the InstaCal installation and test utility.

## What do you want to do?

MCC DAQ Software Provides Your Data Acquisition Solution

Task	MCC Device	Software
Acquire, Log and View Data in Windows without Programming	Most USB, Bluetooth, Ethernet	Install and run DAQami to configure the device and acquire data.
	PCI/PCIe, other USB	Install InstaCal and TracerDAQ (select the TracerDAQ checkbox during installation). Run InstaCal to configure the device, and then run TracerDAQ to acquire data.
C, C++, C# NET, VB, or VB .NET Programming in Windows	USB, Ethernet, Bluetooth, PCI/PCIe	Install InstaCal and the Universal Library (UL). Run InstaCal to configure the device (recommended), or use the UL to configure the device programmatically (advanced), and then use the UL to acquire data programmatically.
Python Programming in Windows	USB, Ethernet, Bluetooth	Install InstaCal and the Universal Library. Install the Universal Library Python API for Windows from PyPI ( <a href="https://pypi.org/project/mcculw/">https://pypi.org/project/mcculw/</a> ). Refer to the Project Description for specific requirements and installation instructions. Run InstaCal to configure the device (recommended), or use the UL to configure the device programmatically (advanced), and then use the UL to acquire data programmatically.
C, C++, or Python Programming in Linux	USB	Install the Universal Library API for Linux from GitHub ( <a href="https://github.com/mccdaq/uldaq">https://github.com/mccdaq/uldaq</a> ). Refer to the README for specific requirements and installation instructions. Use UL for Linux to configure the device and acquire data programmatically.
LabVIEW Programming in Windows	USB, Ethernet, Bluetooth, PCI/PCIe	Install InstaCal and ULx for NI LabVIEW (an existing LabVIEW 2010 or later installation is required.) Run InstaCal to configure the device, and then use ULx for NI LabVIEW to acquire data.

Visit our website at [www.mccdaq.com](http://www.mccdaq.com) for information about each MCC DAQ software package.

© Measurement Computing Corporation. All rights reserved.



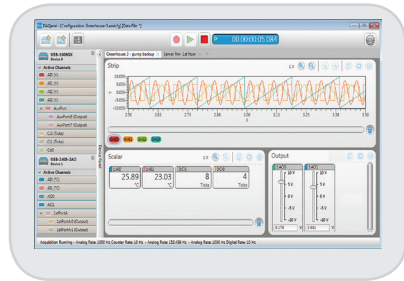
Measurement Computing Corporation • 10 Commerce Way • Norton, MA 02766

508-946-5100 • [info@mccdaq.com](mailto:info@mccdaq.com) • [www.mccdaq.com](http://www.mccdaq.com)

# MCC DAQ Software

## DAQami – Out-of-the-Box Data Acquisition Companion Software for Windows

- Easy-to-use drag and drop interface
- Acquire and generate analog, digital, and counter/timer data
- Scalar, strip, block, and output displays
- Real-time output channel control
- Multiple device support
- No programming required



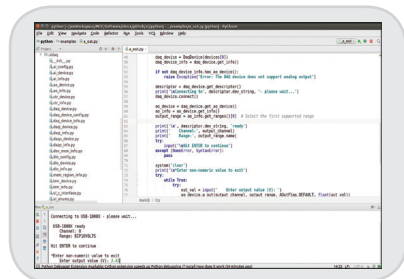
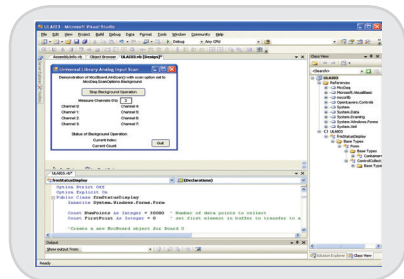
## Universal Library – Data Acquisition Programming Library

### Windows:

- Programming support for C, C++, C# NET, VB, VB .NET, and Python
- Common function calls for most MCC hardware
- Example programs

### Linux

- Programming support for C, C++, and Python
- Example programs
- Support for select MCC devices (refer to [www.mccdaq.com/Linux](http://www.mccdaq.com/Linux))



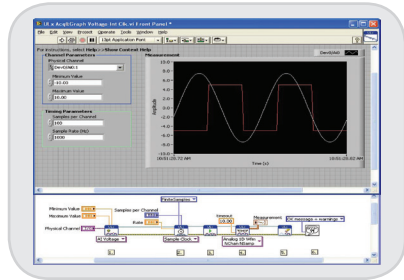
### Android

- Develop apps for Android mobile devices using JAVA
- Example programs and demo apps
- The same high-level functions as Universal Library
- Support for select MCC devices (refer to [www.mccdaq.com/Android](http://www.mccdaq.com/Android))

# MCC DAQ Software

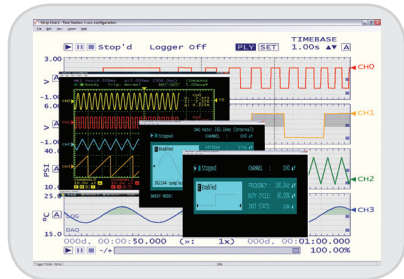
## ULx for NI LabVIEW – Data Acquisition VI Library for LabVIEW

- Library, VIs, and example programs for LabVIEW
- Comprehensive library of graphical functions



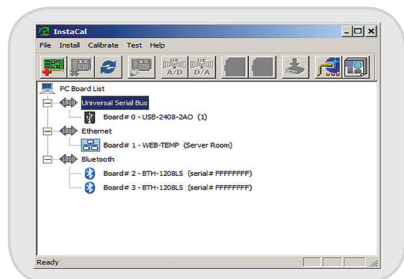
## TracerDAQ and TracerDAQ Pro – Out-of-the-Box Virtual Application Suite for Windows

- Virtual strip chart, oscilloscope, function generator, and rate generator
- Acquire and generate analog and digital data
- No programming required



## InstaCal – Interactive Installation and Test Utility for Windows

- Configure MCC hardware
  - Configuration is used by the UL, ULx for NI LabVIEW, and TracerDAQ
- Test MCC hardware
- Calibrate supported hardware



# DAQami

## Quick Start

DAQami Data Acquisition Companion Software is used to acquire and generate analog and digital data from Measurement Computing USB, Ethernet, and Bluetooth hardware.

DAQami features an intuitive drag-and-drop interface where you can configure your device and acquire data in minutes — no programming is required.

You can acquire, view, and log data in four steps.

### Select a DAQ device

Add a Measurement Computing USB, Ethernet, or Bluetooth device to the acquisition.

If you don't have a physical device you can acquire data from the virtual DEMO-BOARD.

### Configure device, channel, and acquisition options

Select the channels from which to acquire data, and configure the acquisition. Options may include the channel mode, measurement type, scale factors, DIO direction, counter mode, sample rate, trigger type, and so on. The available options are specific to the selected device.

### Add displays and channels

Drag your channels onto any combination of strip, block, and scalar displays. The output display provides real-time controls you can manipulate during an acquisition.

### Acquire and log data

Acquired data is plotted on the displays. You can run the acquisition and preview the data without logging, or run the acquisition and log the data to disk. Data is acquired from each activated channel, even if it is not added to a display.

You can show the values of specific data points, and review data as it is acquired.

The DAQami Help file includes detailed information about how to modify configuration and acquisition settings, customize each display, and export logged data. The DAQami Step-by-Step Guide shows you how to set up the acquisition.

Download and install DAQami from [www.mccdaq.com/DAQami](http://www.mccdaq.com/DAQami) and try the fully-functional, easy-to-use software for 30 days. After the initial 30 days, all features except for data logging and data export will continue to be available. Users can buy DAQami to unlock data logging and export features.

