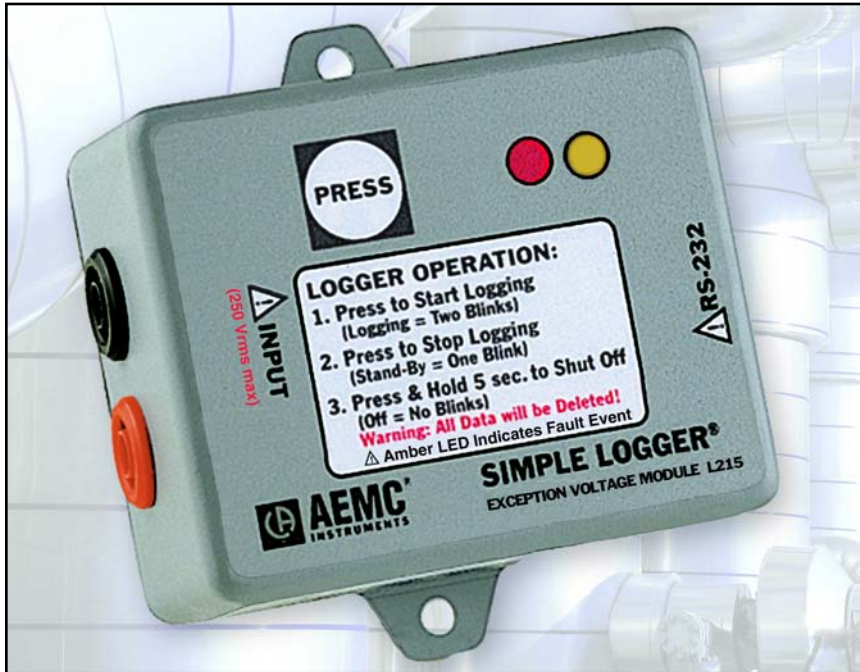


# AC Exception Voltage Simple Logger® Model L215



## Specifications

### ELECTRICAL

- Number of Channels:** 1
- Measurement Range:** 0 to 250Vrms
- Input Connection:**  
Recessed Safety 4mm Banana Jacks
- Resolution:** 12 Bit, 250mV max
- Accuracy\*:** 1% of Reading + 250mV  
(see inside back cover for details)
- Sample Rate:** 36000/hr (10 samples/sec)
- Storage Technique:** Exception recording in FIFO mode; 60 samples stored when alarm is tripped. Each 60 sample recording is considered to be a packet. When memory is full, data will be overwritten one packet at a time beginning with the oldest. Recording only occurs during alarm conditions.
- Data Storage:** 65,536 readings
- Power:** AC powered with 9V Alkaline battery back-up
- Battery Life:** Up to 1 yr @ 25°C
- Output:** RS-232 via DB-9 connector (@ 4800 baud)

**Indicators:** Red LED double flashes in LOGGING, single flashes in STANDBY and is off in OFF mode. Amber LED flashes once every 2 seconds when alarm level has been tripped. Amber light can only be reset by stopping the recording and downloading the data.

**Controls:** One button used to start and stop recording sessions and to turn the data logger on and off

### MECHANICAL

- Size:** 2 7/8 x 2 5/16 x 1 5/8"  
(73 x 59 x 41mm)
- Weight:** (with battery) 5 oz (140g)
- Mounting:** Base plate mounting holes or Velcro® pads supplied loose

### ENVIRONMENTAL

- Operating Temperature:**  
-4 to +158°F (-20 to +70°C)
- Storage Temperature:**  
-4 to +176°F (-20 to +80°C)
- Relative Humidity:**  
5 to 95% non-condensing

## Features

- 0 to 250Vrms measurement range
- 10 samples per second
- Stores data when alarm level is tripped
- True RMS measurements
- 64K storage memory
- 10 bit resolution (250mV)
- Detect sags and swells
- Scale automatically selected by software
- Software programmable HI and LO alarm levels
- Alarm trip LED indicator

## Applications

- Surge/Sag monitoring
- Computer room monitoring
- Residential monitoring
- Machine monitoring
- Marine power monitoring

## ORDERING INFORMATION

**Simple Logger® Model L215, Exception Voltage (0 to 250VAC Input)** ..... **Cat. #2116.07**  
 Includes software (CD-ROM), 6 ft DB-9 RS-232 cable, 9V Alkaline battery, 5 ft lead set and user manual

### Accessories

- 110V US Outlet Adaptor with Banana Jacks ..... Cat. #2118.49
- Voltage Leads, (2) with clips, 5 ft ..... Cat. #2118.51

## CATALOG NO.

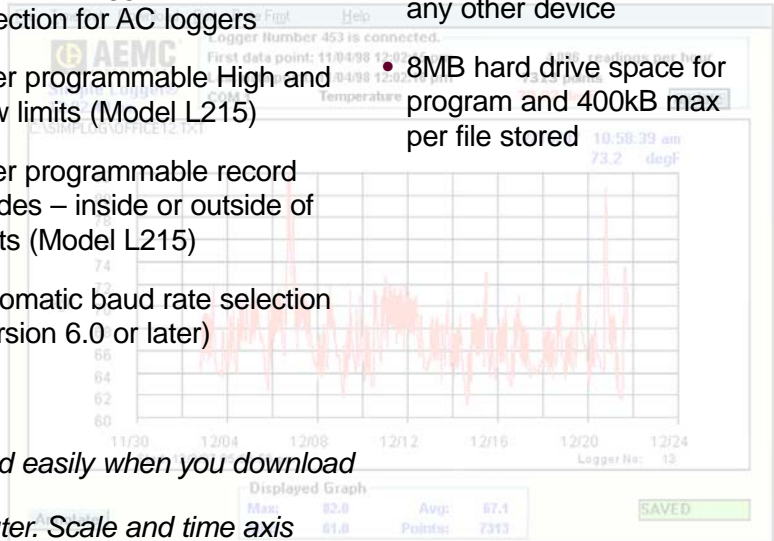
# Simple Logger® Software

## Features

- Very easy to setup and use — no programming required
- Statistics appear on screen: Max, Min, Avg, Date and Time
- On-Line display of data logger values
- Zoom capability with automatic statistics update
- User keyed text annotations
- Automatically displays values at the cursor position
- Export data to spreadsheet and database software
- Print both graphs and tabular listings
- Paste graphs into other applications
- Programmable scale and units for all DC loggers. Automatic selection for AC loggers
- User programmable High and Low limits (Model L215)
- User programmable record modes – inside or outside of limits (Model L215)
- Automatic baud rate selection (version 6.0 or later)

## Computer Requirements

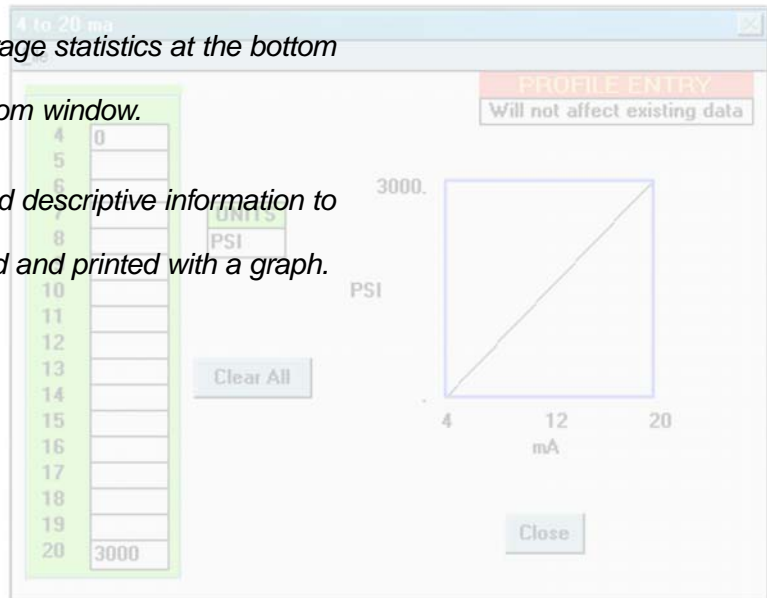
- 486 or higher
- 8MB of RAM
- Windows®95/98/2000/ME/XP or Windows®NT
- 1 serial port not in use by any other device
- 8MB hard drive space for program and 400kB max per file stored



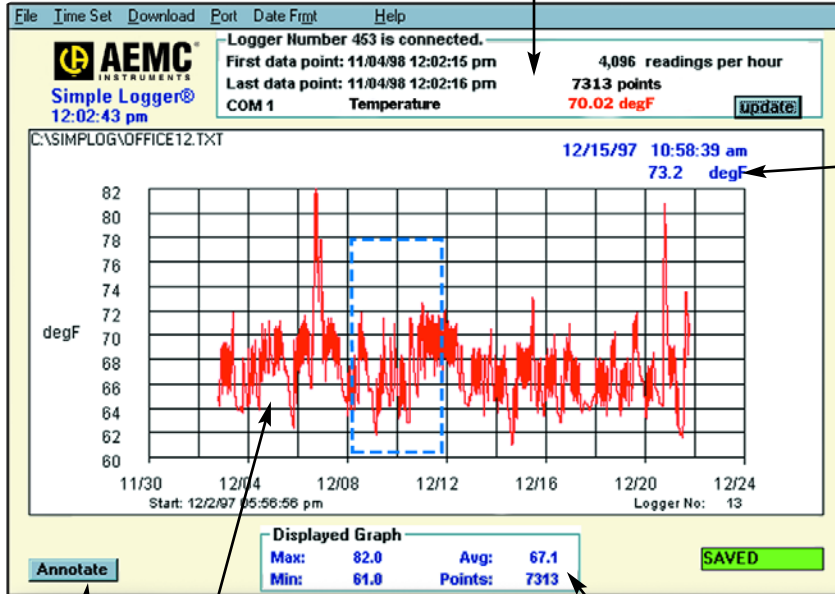
*Plot graphs and view statistics quickly and easily when you download data from Simple Logger® to your computer. Scale and time axis update automatically.*

*Click and drag your mouse to zoom up the desired area of the graph for better viewing. The Min, Max and Average statistics at the bottom of the graph update automatically with zoom window.*

*Click the Annotate button to add a title and descriptive information to your graph. This information can be stored and printed with a graph.*



On-line display of data

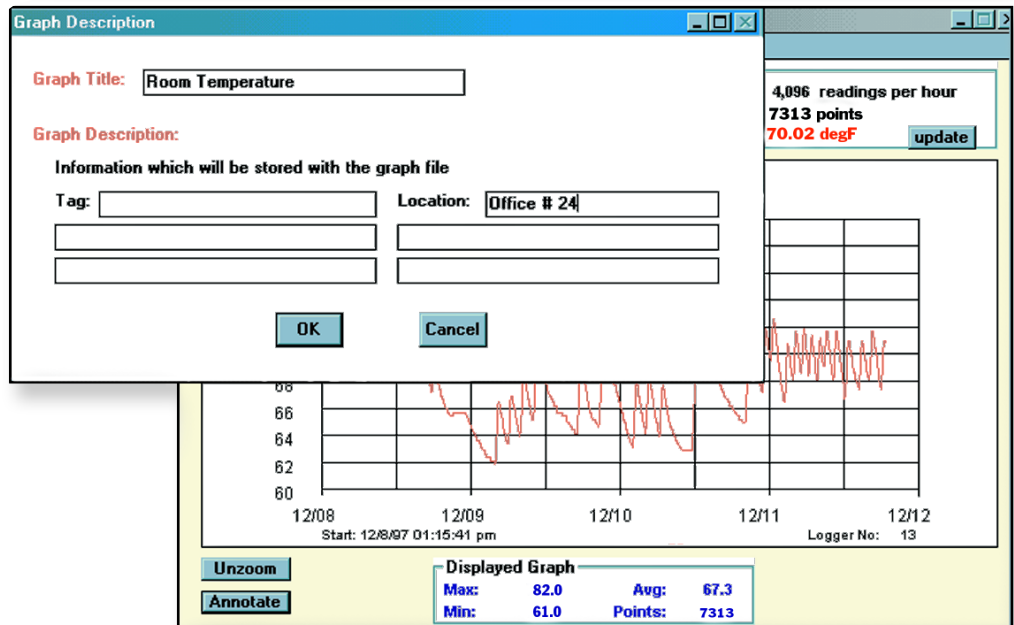


Automatic update of Y data at cursor position

Annotate button

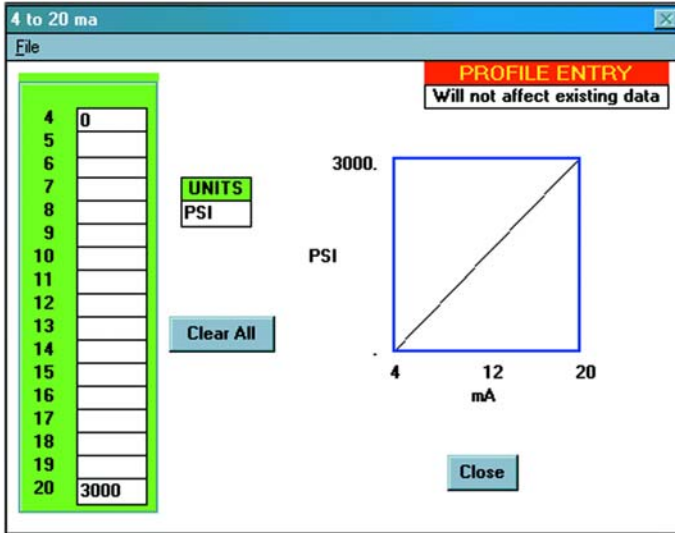
Plot area with value and time data shown on the X and Y axis

Graph Statistics

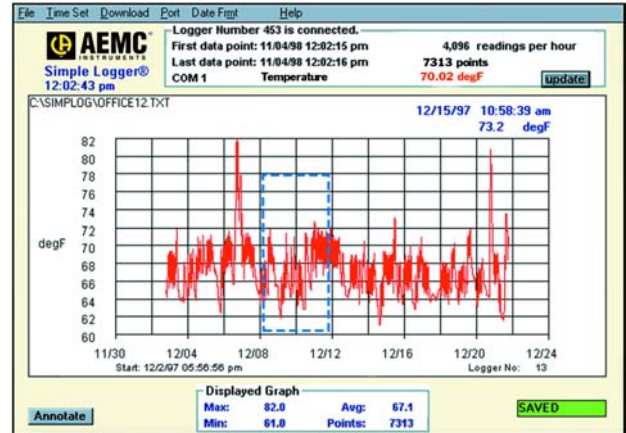


Click the Annotate button to add a title and descriptive information to your graph. This information can be stored and printed with a graph.

# Simple Logger® Software

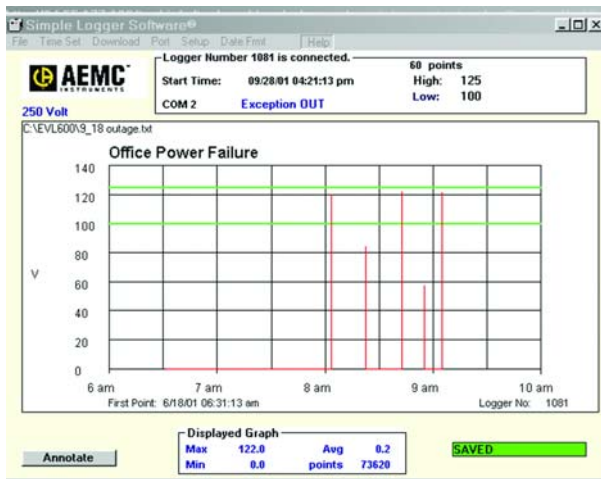


Click the scale button in the file menu to create custom scales and engineering units for DC voltage (Models L410 & L430) and DC current loggers (Model L320).



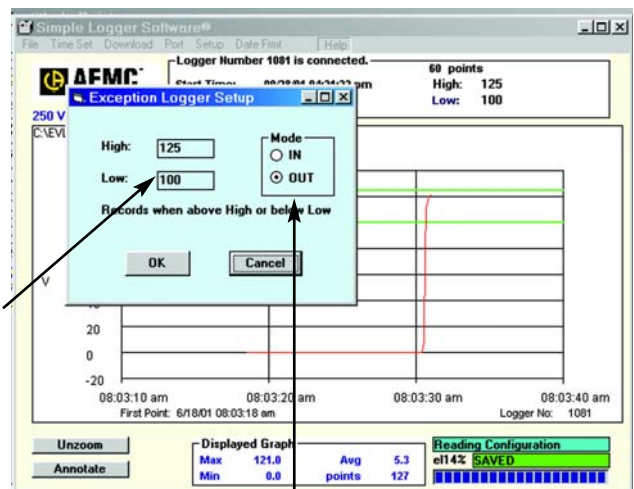
Click and drag your mouse to zoom up the desired area of the graph for better viewing. The Min, Max and Average statistics at the bottom of the graph update automatically when the graph is zoomed.

# Simple Logger® Model L215 Software



Each captured exception is displayed at its time of occurrence on the graph. Individual exceptions can be zoomed up for more detailed analysis.

User programmable High & Low limits



User selectable move allows for data storage inside or outside the limits

## Contact Us

### United States & Canada:

Chauvin Arnoux®, Inc.  
d.b.a. AEMC® Instruments  
200 Foxborough Blvd.  
Foxborough, MA 02035 USA  
(508) 698-2115 • Fax (508) 698-2118  
www.aemc.com

**Customer Support – for placing an order, obtaining price & delivery:**  
customerservice@aemc.com

**Sales Department – for general sales information:**  
sales@aemc.com

**Repair and Calibration Service – for information on repair & calibration, obtaining a user manual:**  
repair@aemc.com

**Technical and Product Application Support – for technical and application support:**  
techinfo@aemc.com

**Webmaster – for information regarding www.aemc.com:**  
webmaster@aemc.com

### South America, Central America, Mexico, Caribbean, Australia & New Zealand:

Chauvin Arnoux®, Inc.  
d.b.a. AEMC® Instruments  
15 Faraday Drive  
Dover, NH 03820 USA  
(978) 526-7667 • Fax (978) 526-7605  
export@aemc.com  
www.aemc.com

### All other countries:

Chauvin Arnoux SCA  
190, rue Championnet  
75876 Paris Cedex 18, France  
33 1 44 85 45 28 • Fax 33 1 46 27 73 89  
info@chauvin-arnoux.com  
www.chauvin-arnoux.com

